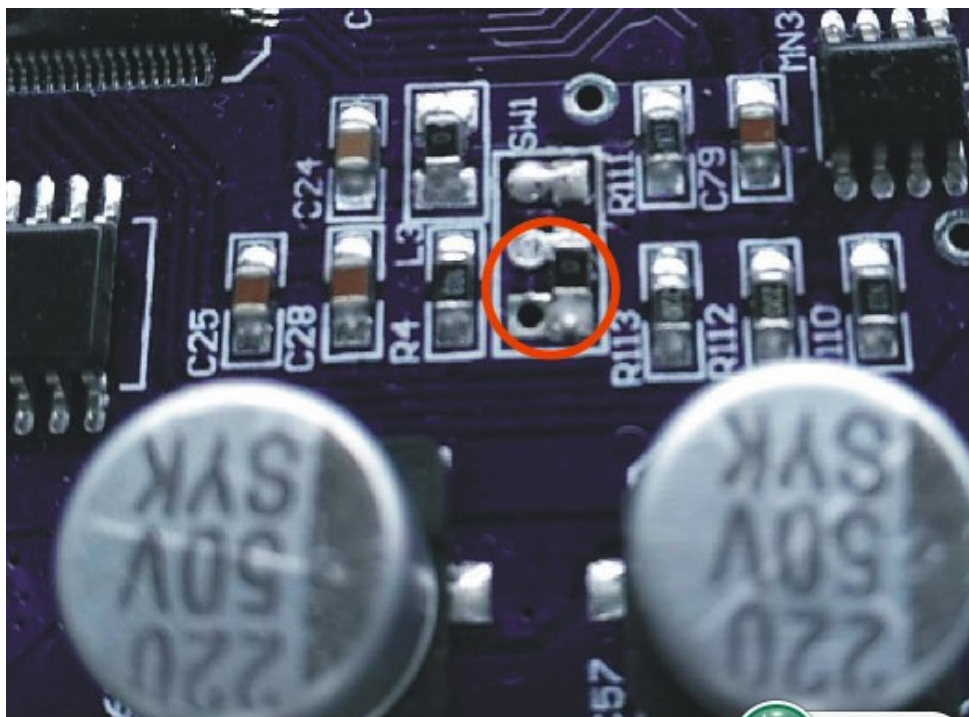
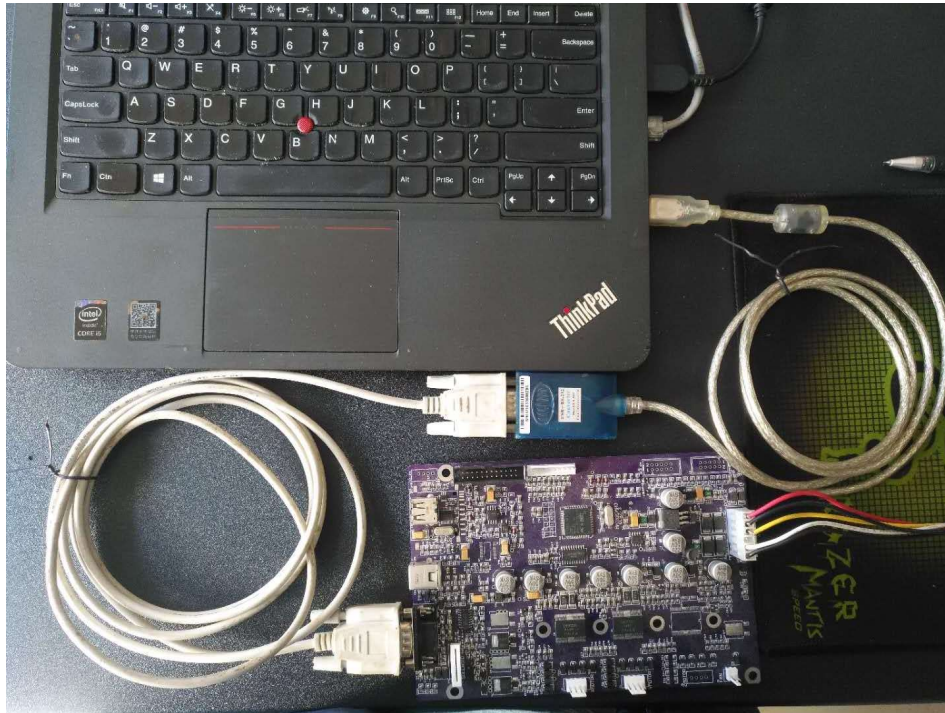


The inner links in the red circles as shown above are in burn mode

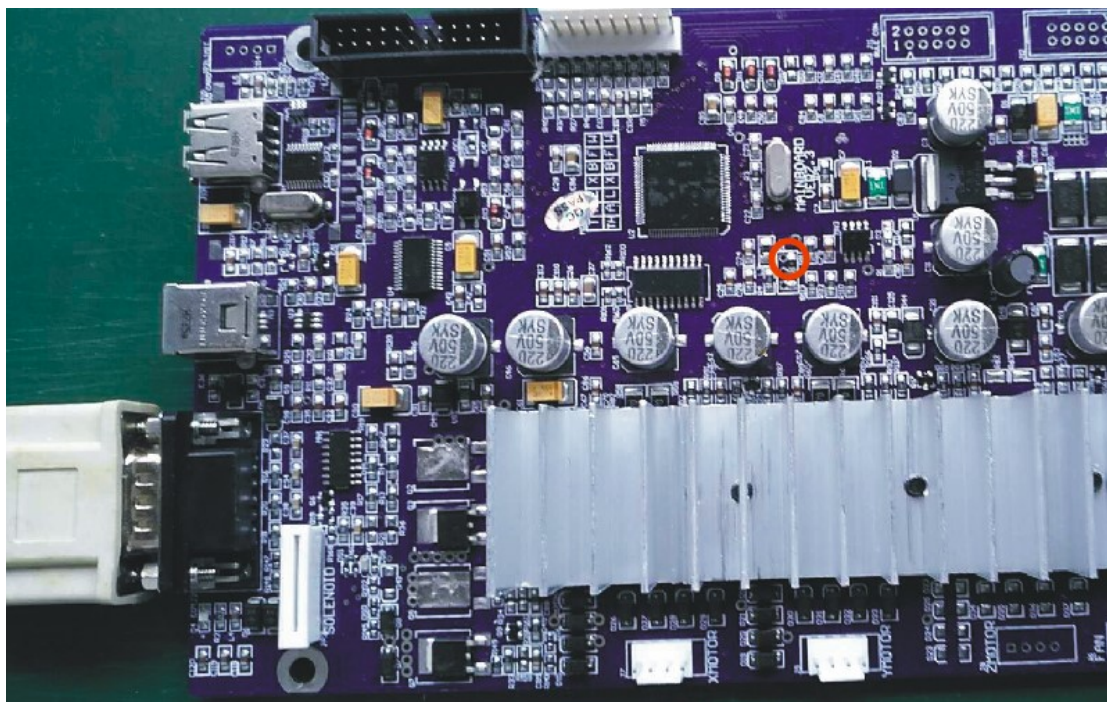


The inner connection in the red circle shown above is the running mode

Step 1 properly connect the computer and motherboard via USB and COM cables

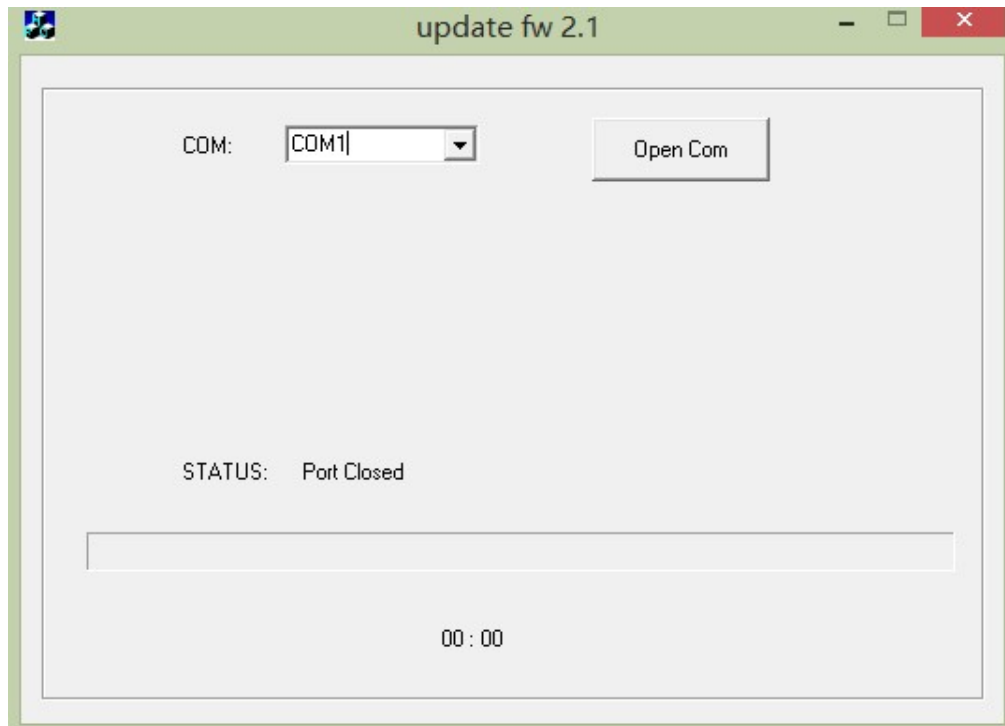


Step 2: Short-circuit the burning procedure mode shown in the diagram



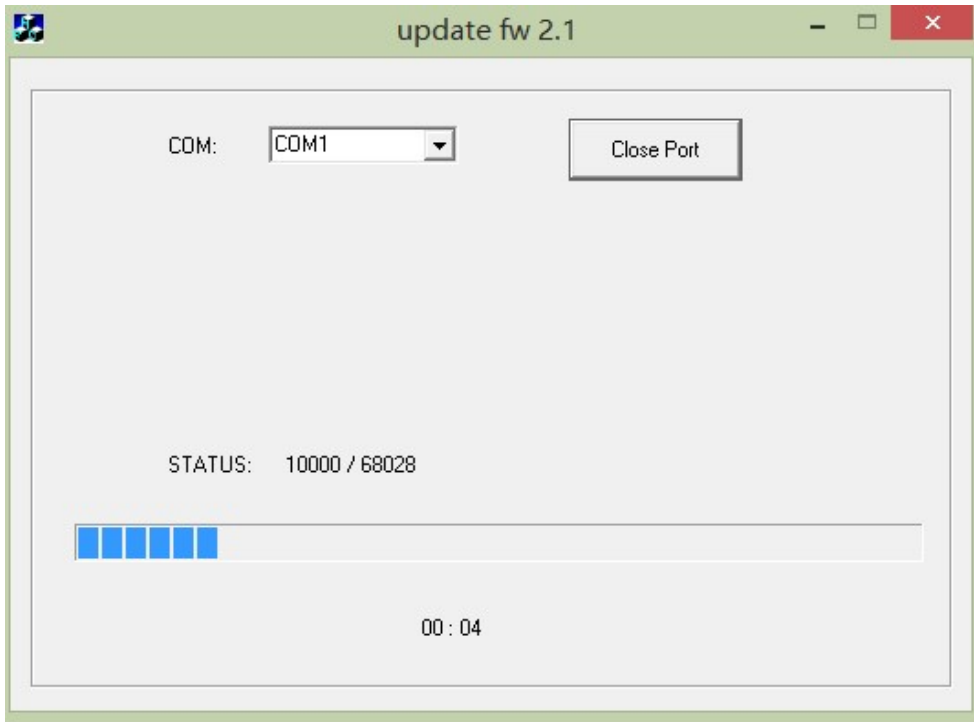
Step 3: Turn on the power

Step 4, open the download software "update\_fw\_2.1.exe"

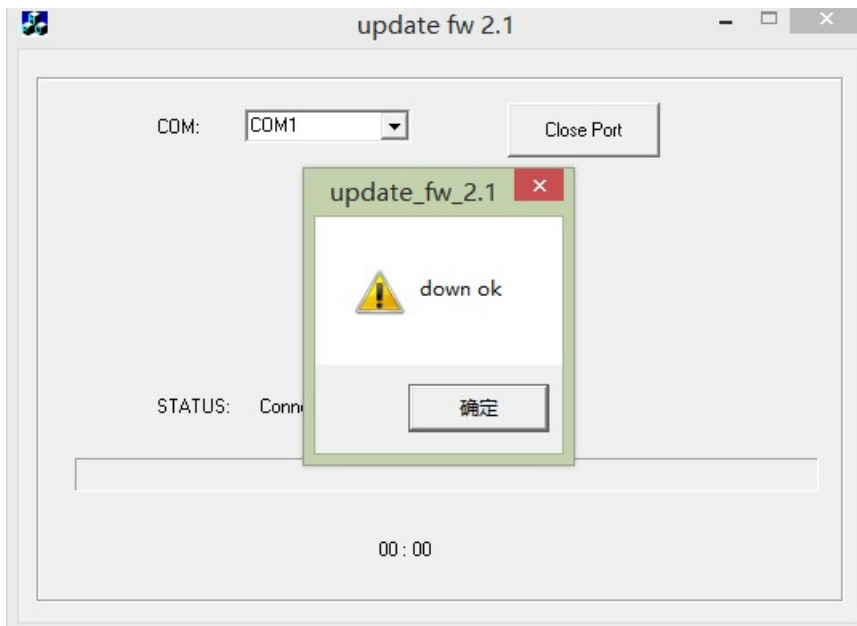


As shown in the figure, the COM port with good connection is selected.

Click the button "Open COM" to start downloading



Waiting for the download to complete



Note: after downloading, be sure to turn off the power of the machine before turning off the software

Step 5 Jump the resistance into the running mode as shown below, and the update program is completed.

