

Image 1-1

**As shown in above image1-1:
the chip connection mode is for updating system**

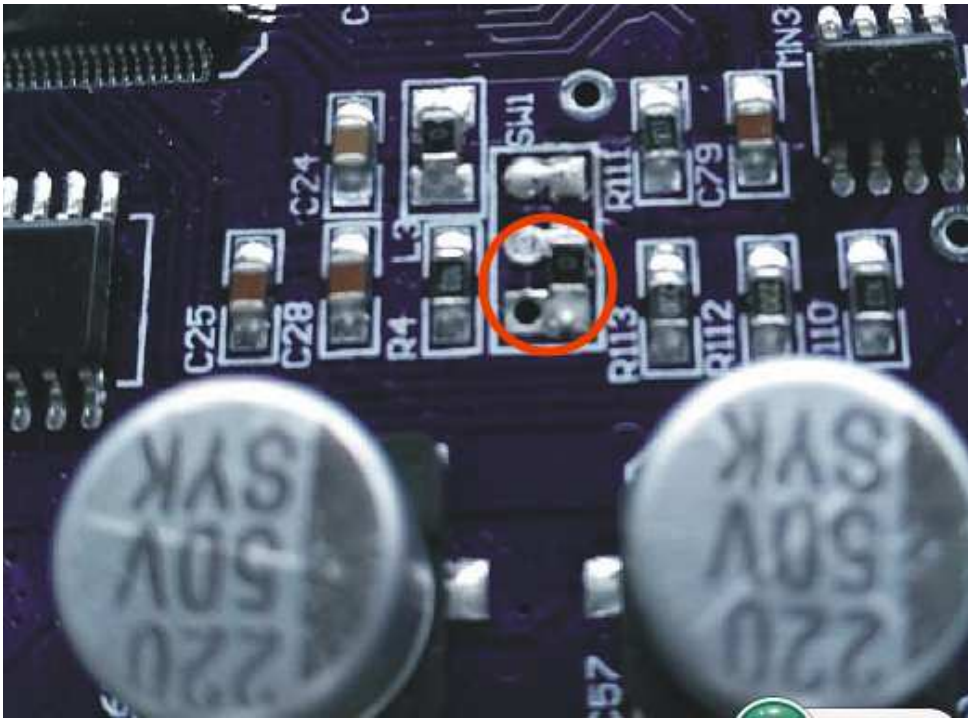
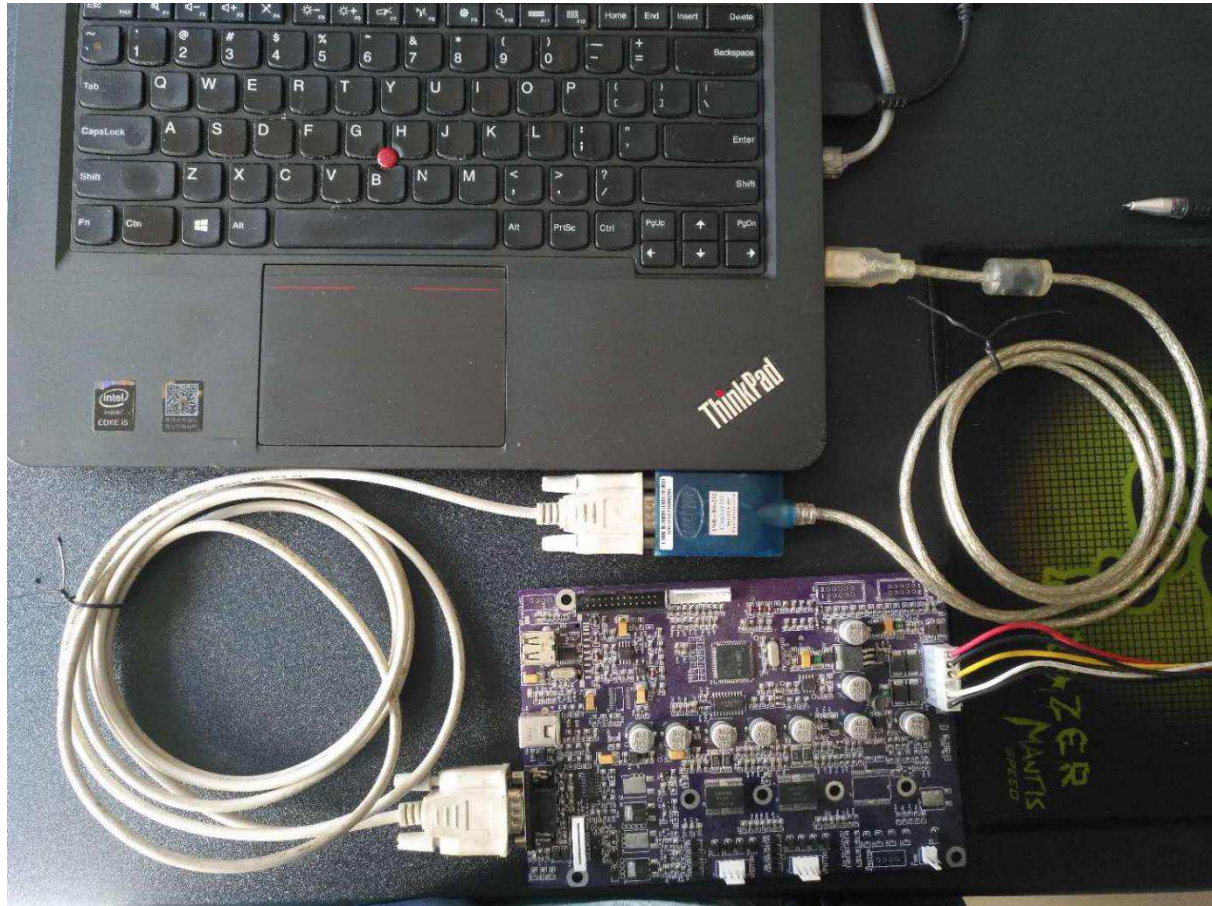


Image 2-2

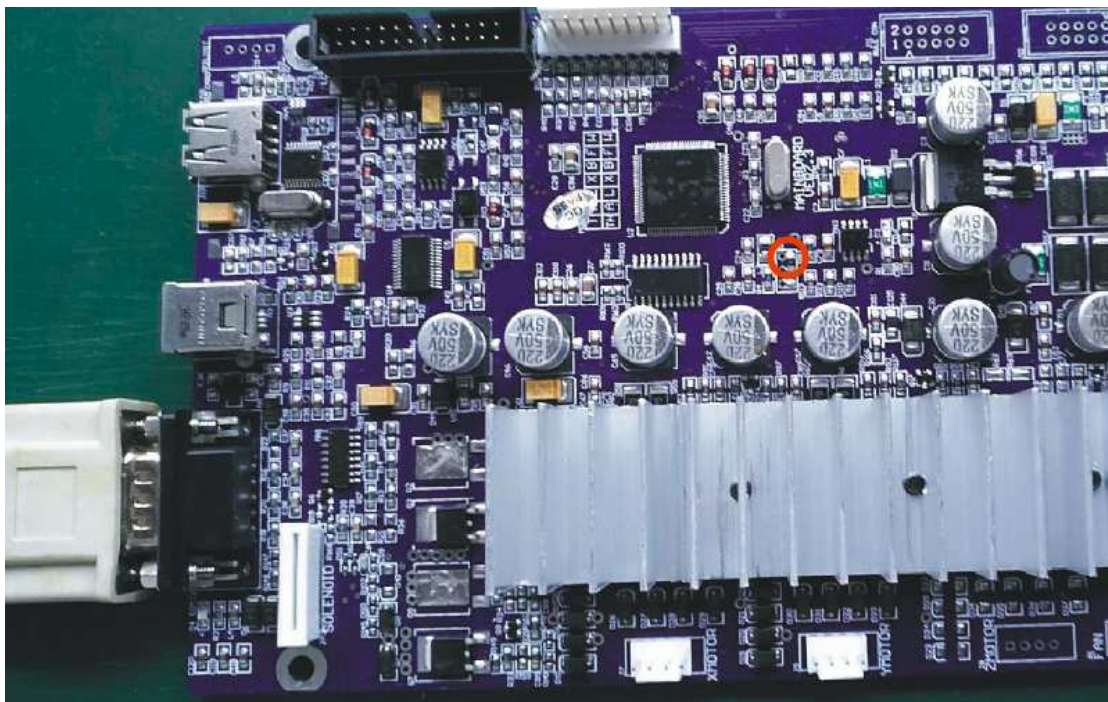
As shown in above image 2-2:

The chip connection is working mode

Now we start to update the system.



1. Use the Welding tool to remove the chip for updating system mode. (The chip connection same as shown in image1-1)

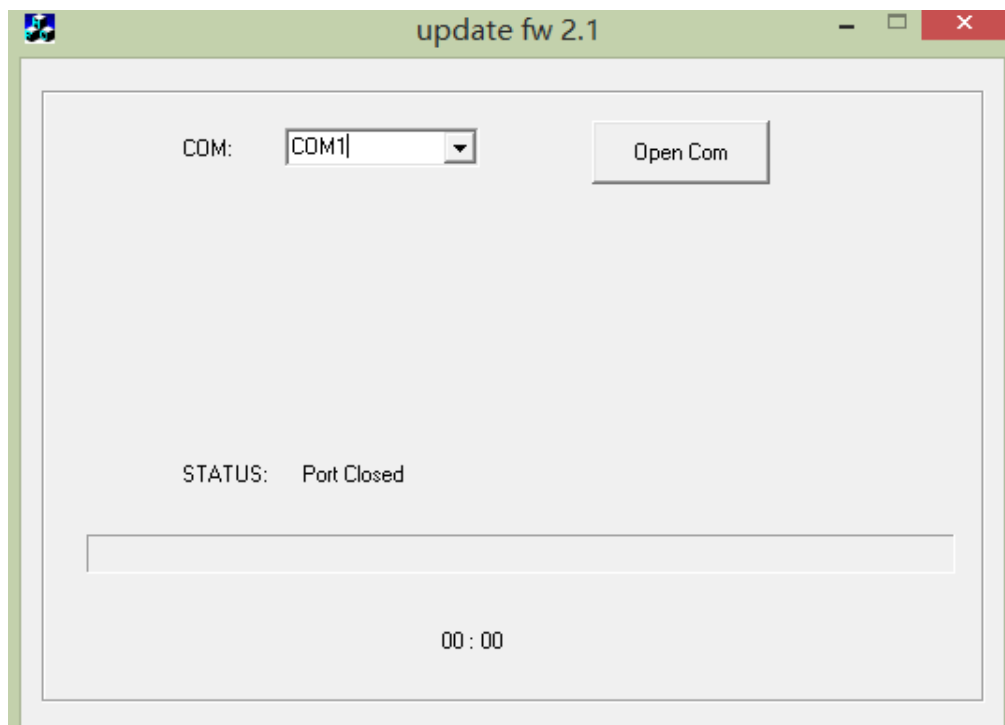


2. Use the usb serial com port cable to connect computer

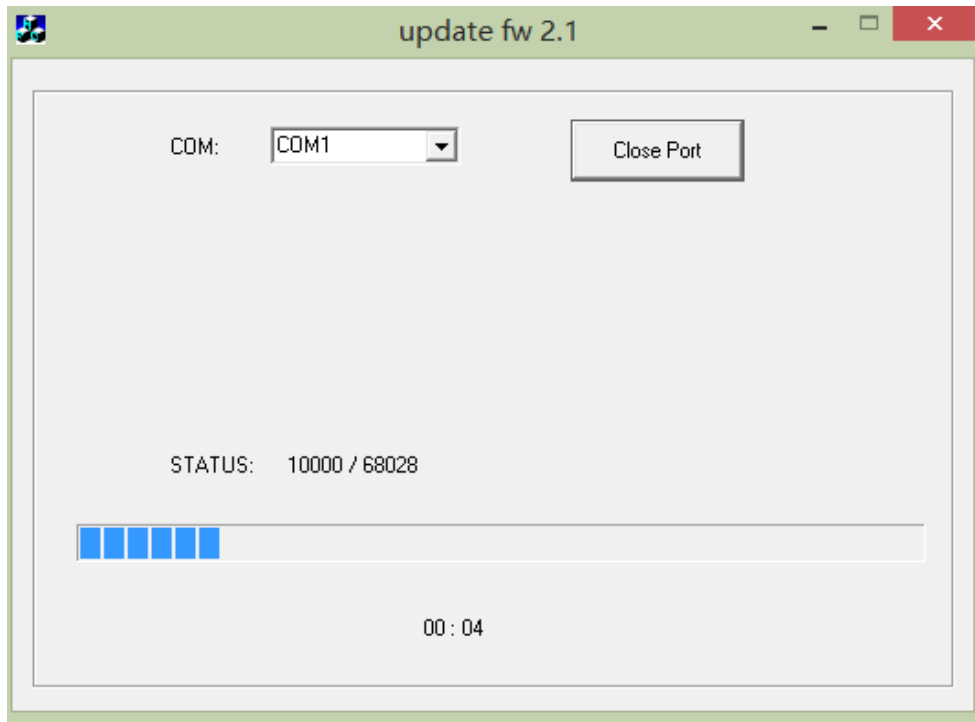
with machine.And make the sheet cutter power on.

3.Click program “update_fw_2.1.exe” in the file folder to download the updating software.

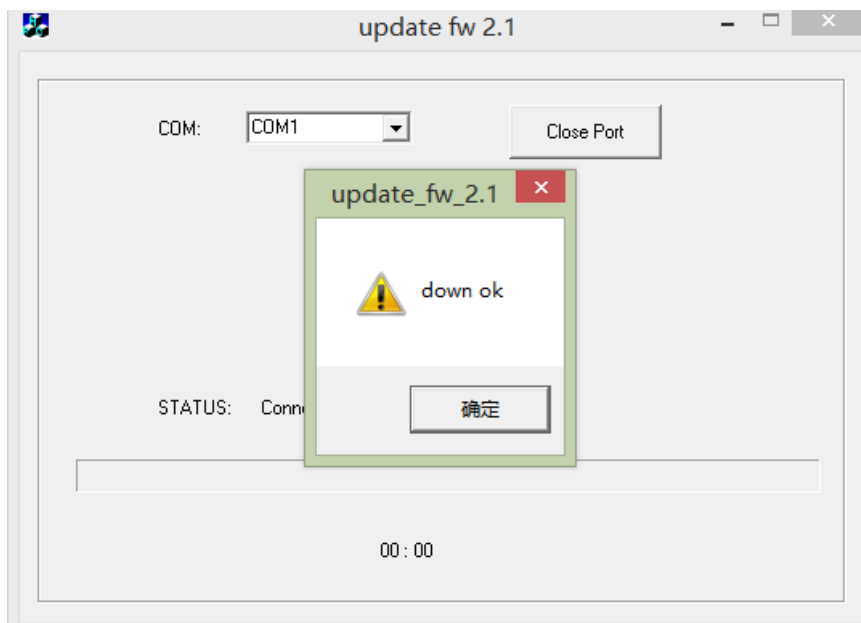
A dialog box will pop up on the desktop.As shown in below image



Choose the connected port,click “Open Com” ,it will download status



Wait some times for finished the download



Attention:

When the download finished,we need make machine power off at first.Then we close the updating software.

4.Use the Welding tool to remove the chip for working mode.

(The chip connection same as shown in image2-2)

