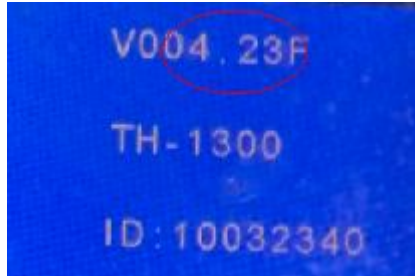


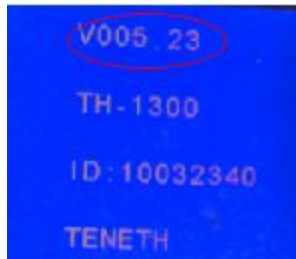
重要说明：

本插件适用于以下说明的主板固件以上机器型号，
TH,T 系列机器 USB 口虚拟串口固件在 4.23 及以上版



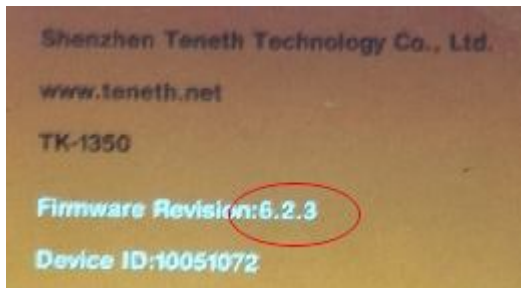
本，

TH,T 系列机器 USB 口打印支持端口固件在 5.23 及以



上，

TK,TN 系列机器固件在 6.23 及以上，



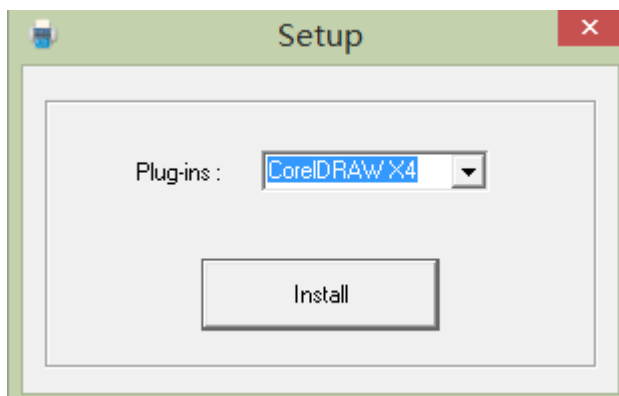
安装前请查看机器版本号是否适用此插件，不适合安
装本插件的机器请咨询经销商获取软件许可证书文件

安装方法：

1. 打开安装文件夹

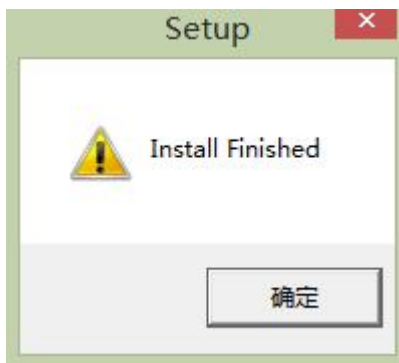
CutterProCdr	2016/3/14 18:37	文件夹	
GMS	2016/3/14 18:37	文件夹	
mfc100.dll	2010/3/18 9:15	应用程序扩展	4,241 KB
msvcp100.dll	2010/3/18 9:15	应用程序扩展	412 KB
msvcr100.dll	2010/3/18 9:15	应用程序扩展	753 KB
Setup.exe	2016/3/15 10:43	应用程序	30 KB
teneth.xslt	2016/3/4 16:57	XSLT 文件	25 KB

2. 双击文件“Setup.exe”,弹出对话框



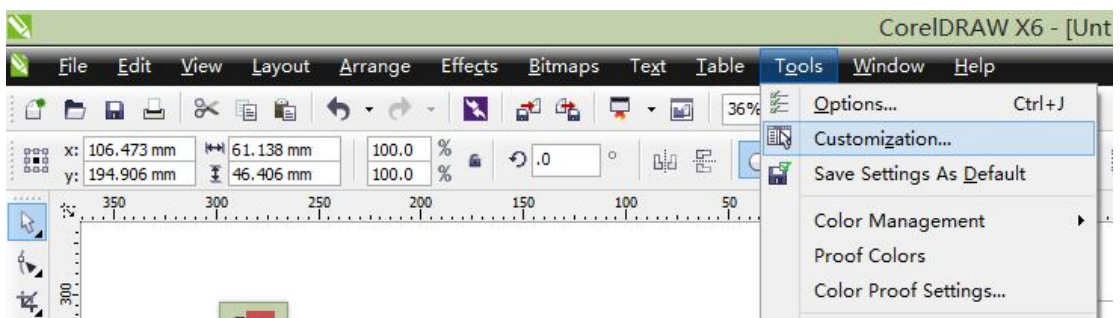
3. 选择自己电脑装的 CDR 版本, 点击按钮“Install”

4. 安装完出现对话框

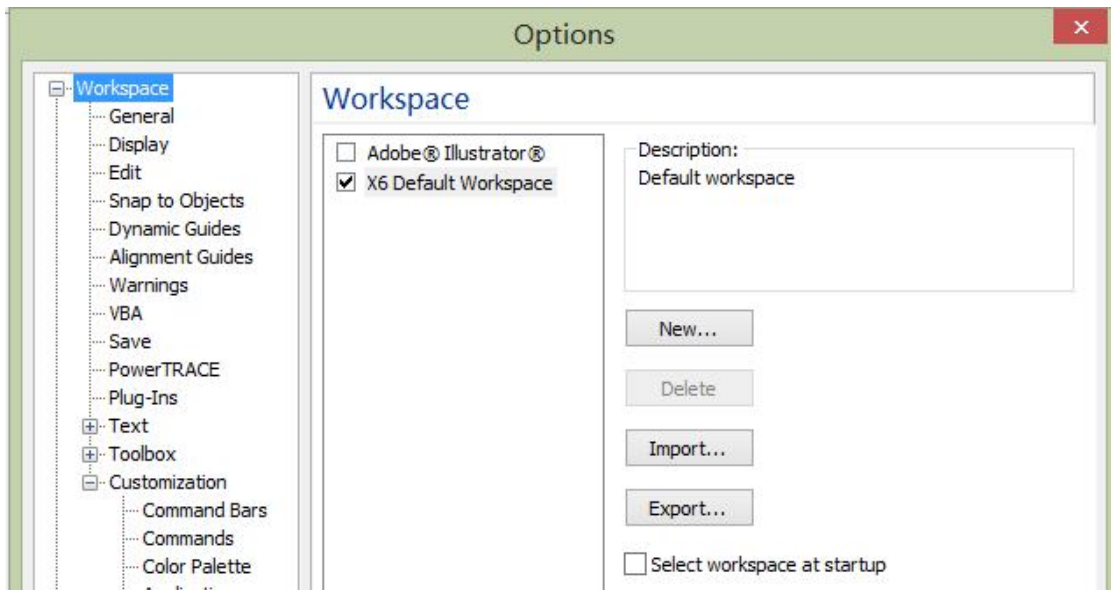


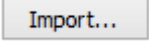
, 点击确认安装完成

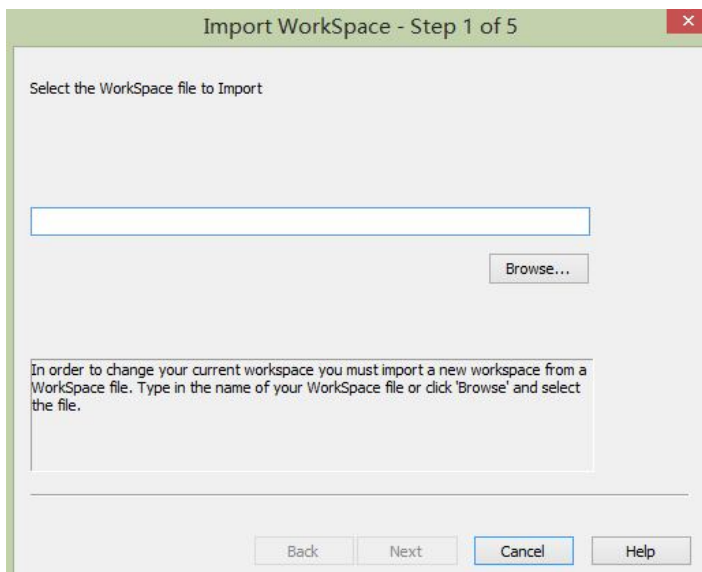
5. 打开 CDR 软件, 点击菜单“工具—》自定义”



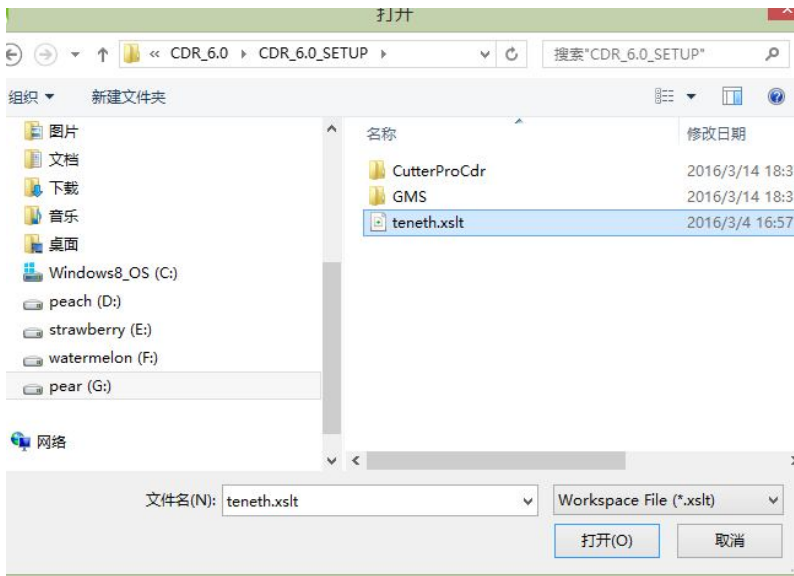
出现对话框



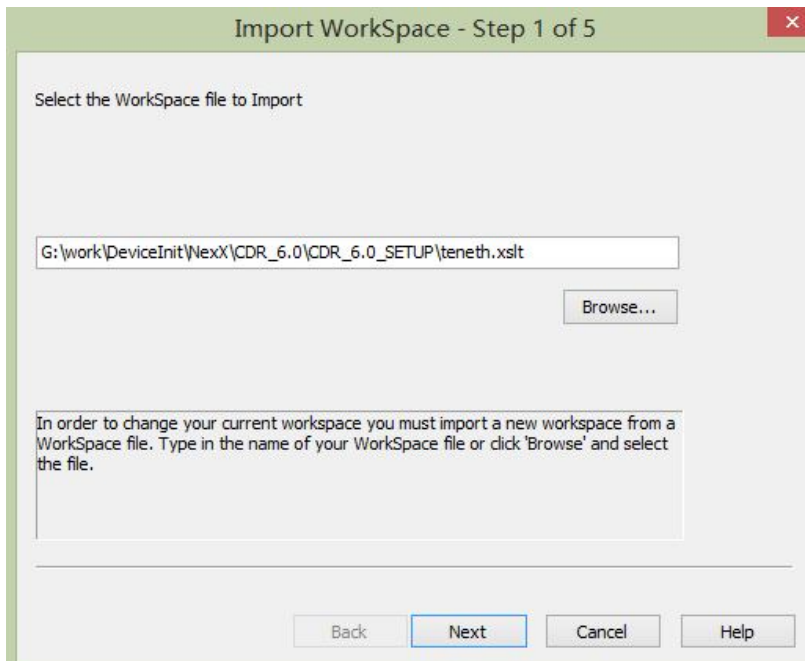
选择左边最上面一行“工作区域”，点击右边的导入按钮 ，出现对话框



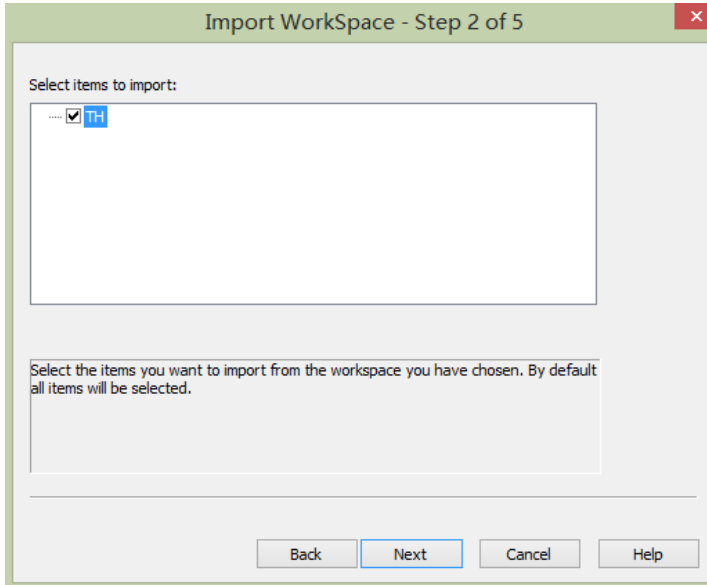
，点击浏览按钮



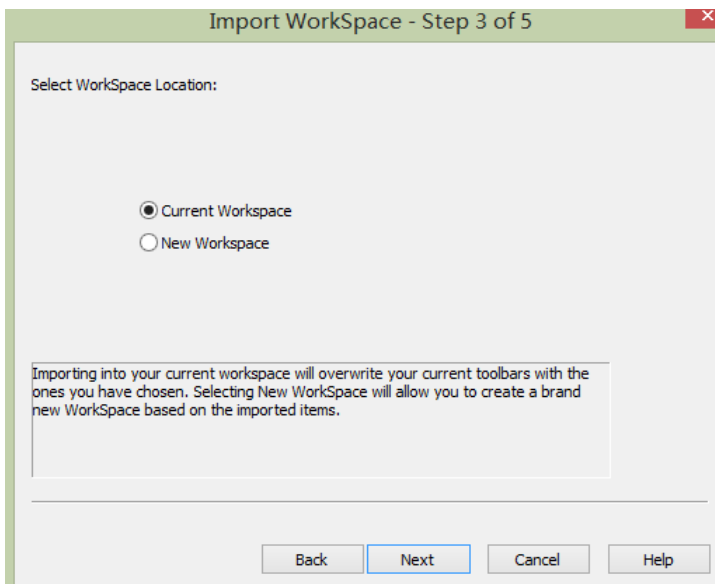
选择安装文件夹里面的文件“teneth.xslt”，



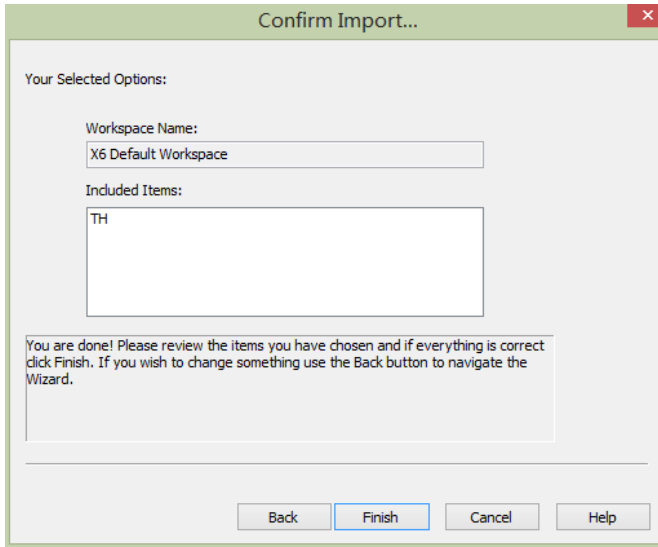
点击下一步



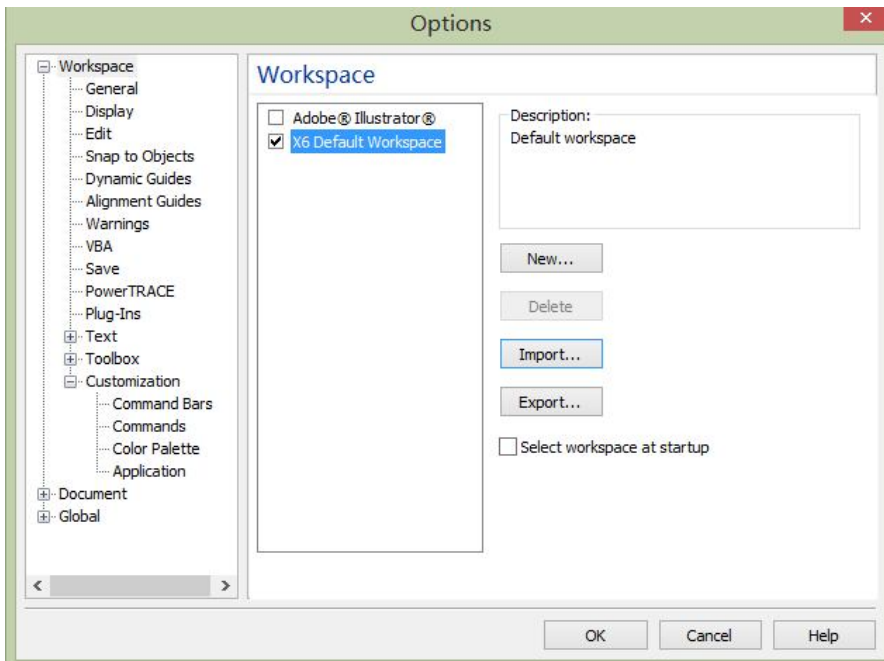
默认点击下一步



默认点击下一步

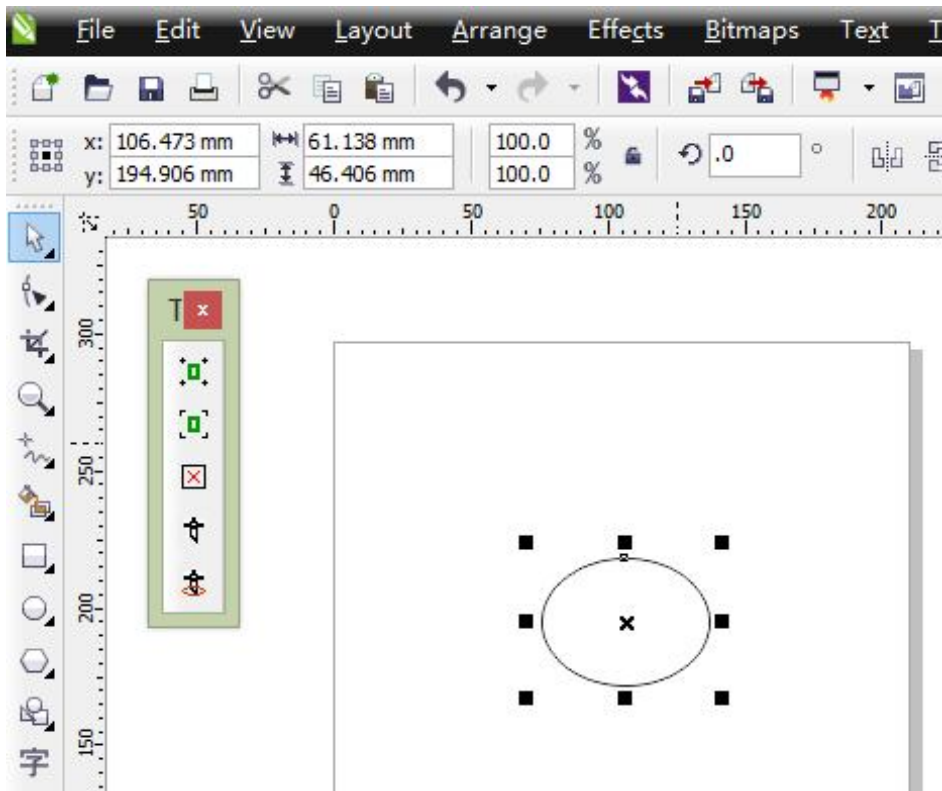


点击完成

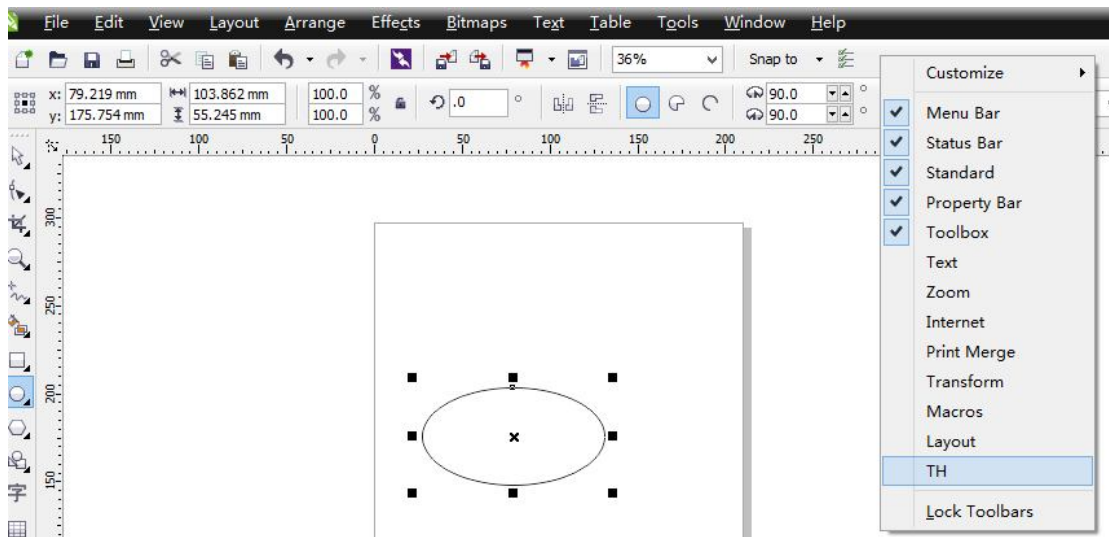


点击确认，

安装完软件会出现如下工具条





注意：如果操作完没有显示出来如上图的工具条，用鼠标右键点击软件工具条的空白处，回弹出对话框




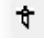
，选择 TH 工具条即可。


使用方法：

 添加手动定位标记按钮

 添加自动定位标记按钮

 删除添加的定位标记

 普通切割输出

 轮廓切割输出