

X-Rite, Inc.

USB Driver Installation Instructions

v.1 0

January 2007

Contents

Windows Vista: Automatic installation.....	3
Windows Vista: Manual installation.....	5
Windows 2000/XP: First time install.....	12
Windows 2000/XP: Driver Update.....	17
Windows 98: First time install	24
Windows 98: Update installation	28

Windows Vista: Automatic installation

User has never installed any X-Rite USB device and is using the Unified Drivers.

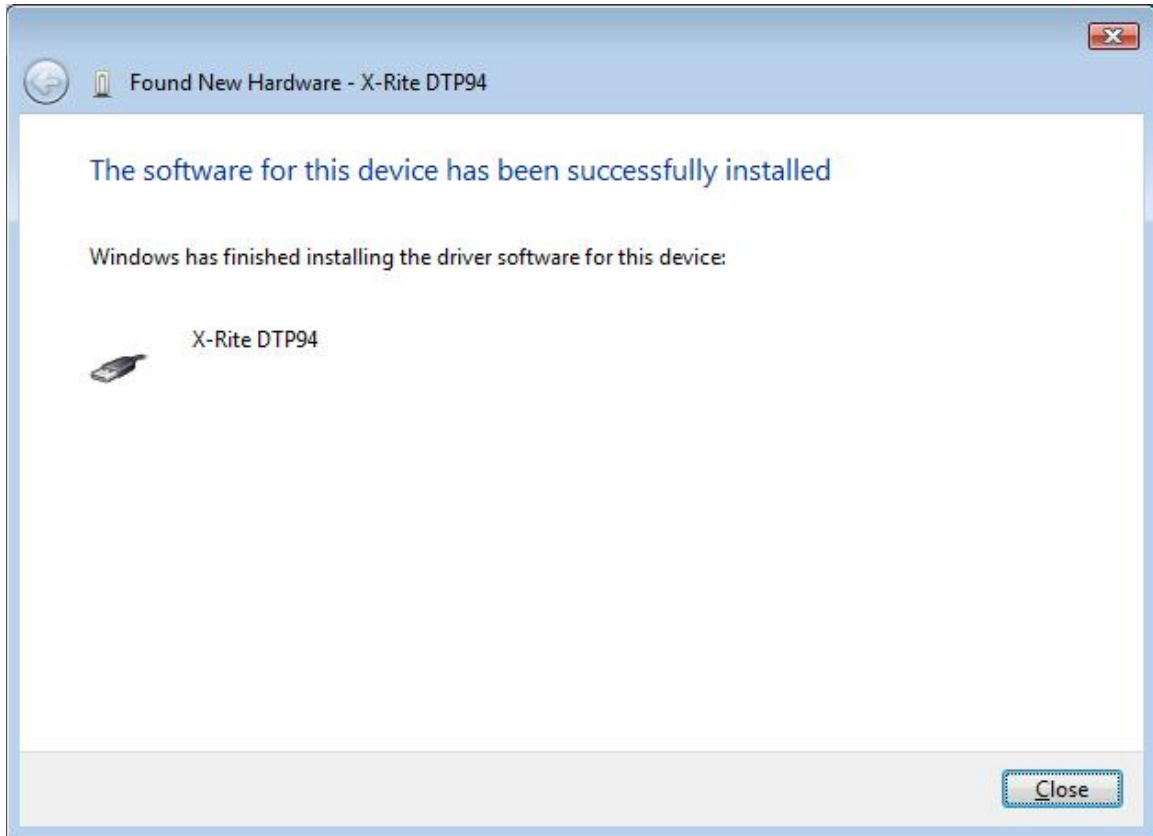
Copy the drivers folder into C:\Windows\inf folder. When you plug the instrument the following dialog may pop up after a few seconds:



Select "locate and install driver software".



Click Install

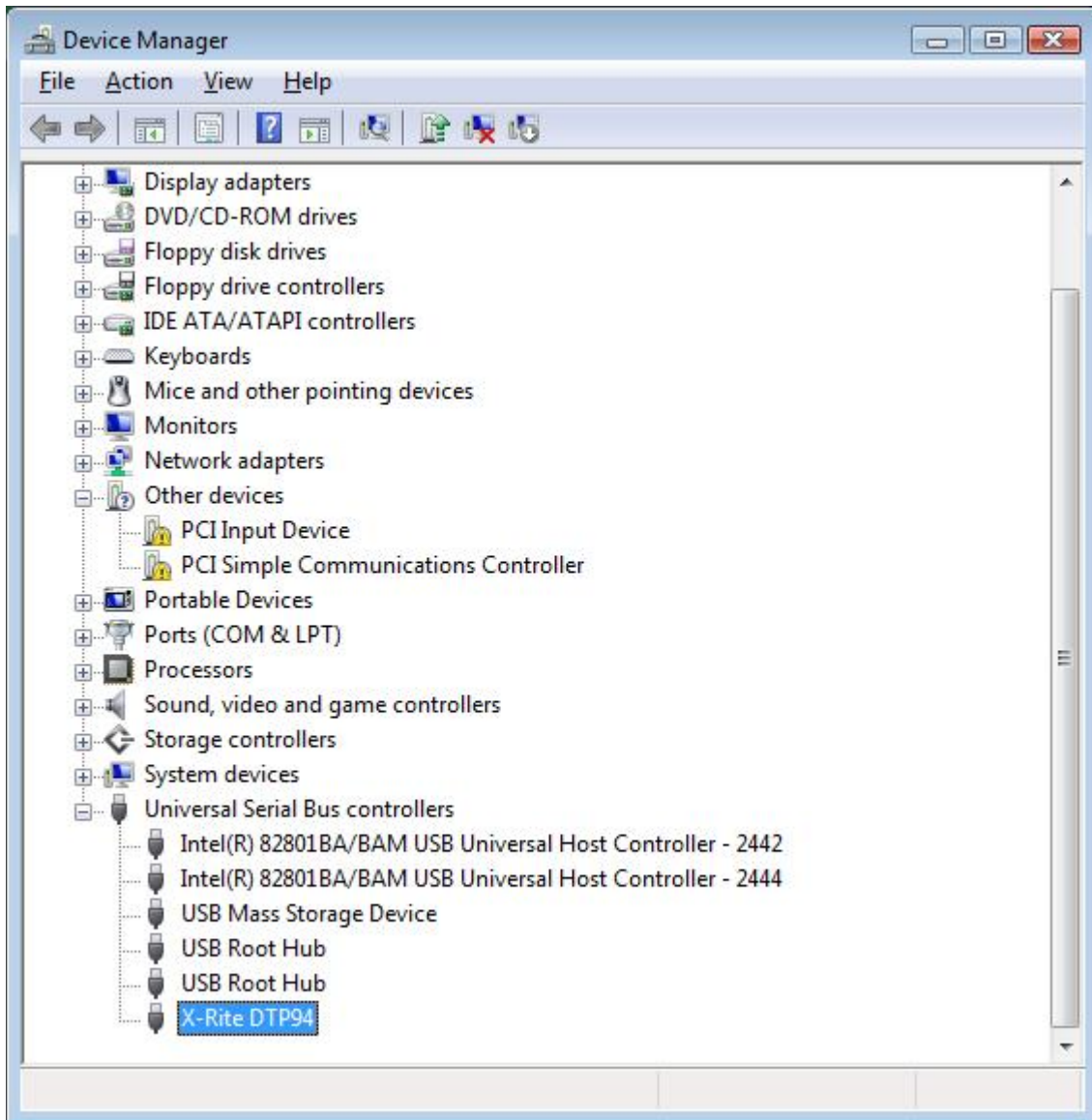


Click close. You are now ready to use the instrument.

Windows Vista: Manual installation

User has never installed any X-Rite USB device.

Although you do not need to look at the device manager to perform a first time install, you can verify that the system does not already have an X-Rite USB device installed. To view the device manager, right click on the My Computer icon on the desktop, select Properties, select “Device manager”. If you expand the Universal Serial Bus controller’s section you will not find the any X-Rite USB device(s) listed if this system has no X-Rite USB device(s).

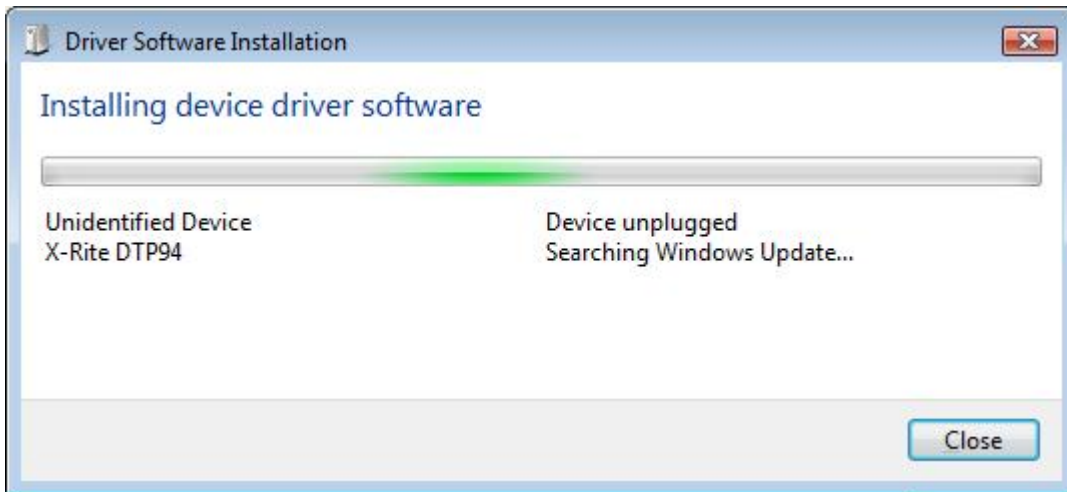


Plug in the X-Rite device you wish to use, such as an X-Rite DTP94 (monitor calibrator instrument).

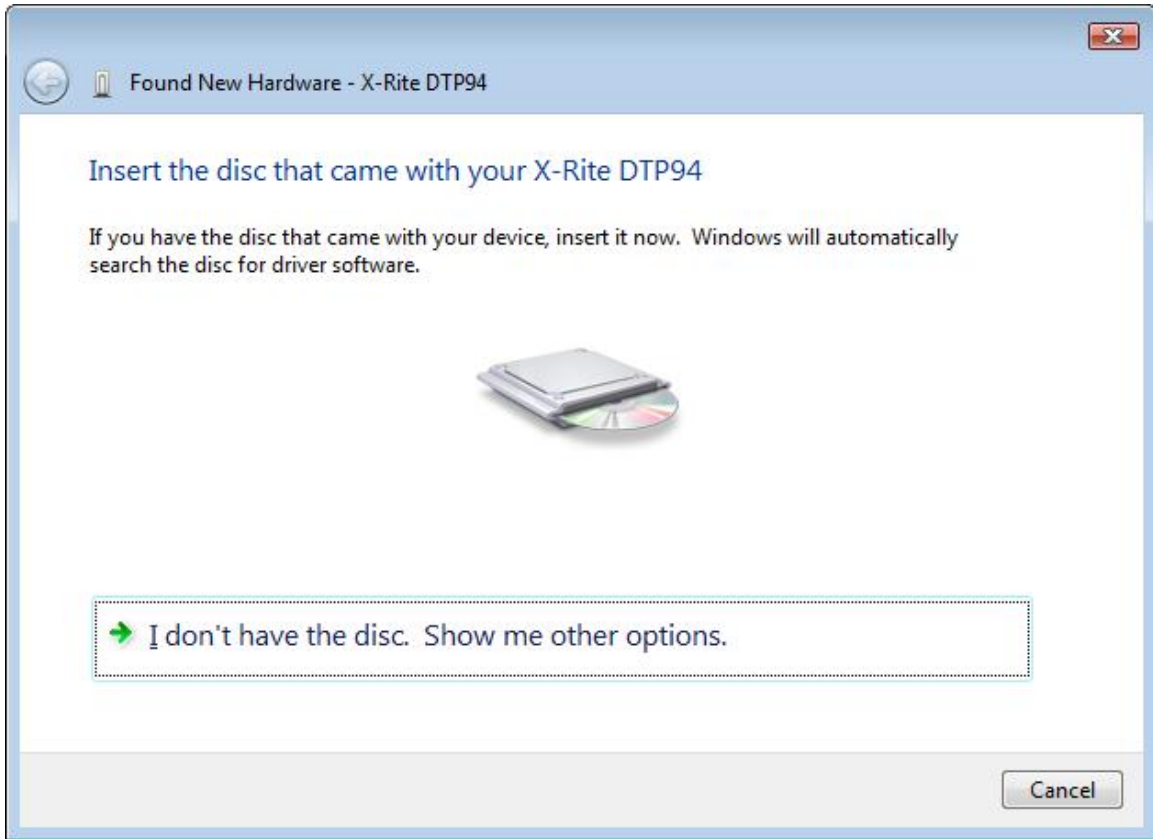


Select "locate and install driver software".

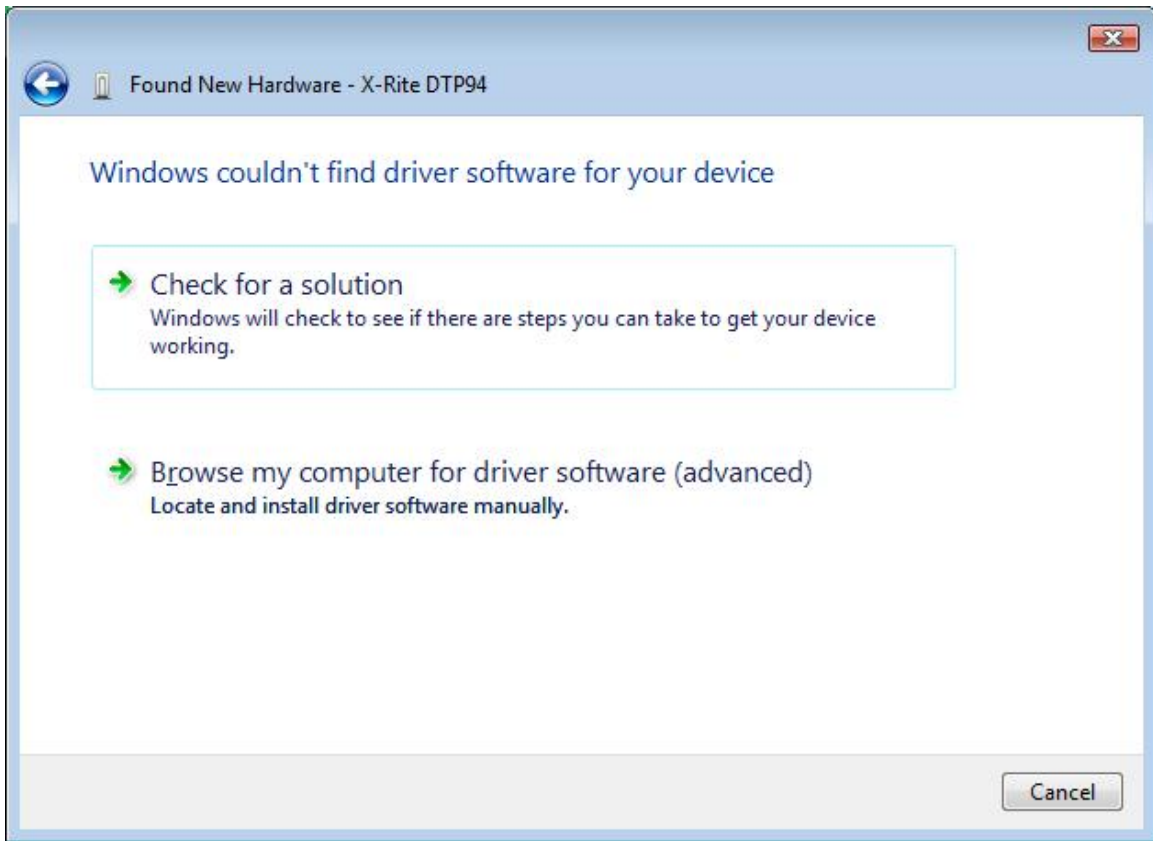
If you encounter a dialog box called "Windows needs your permission to continue..." click continue



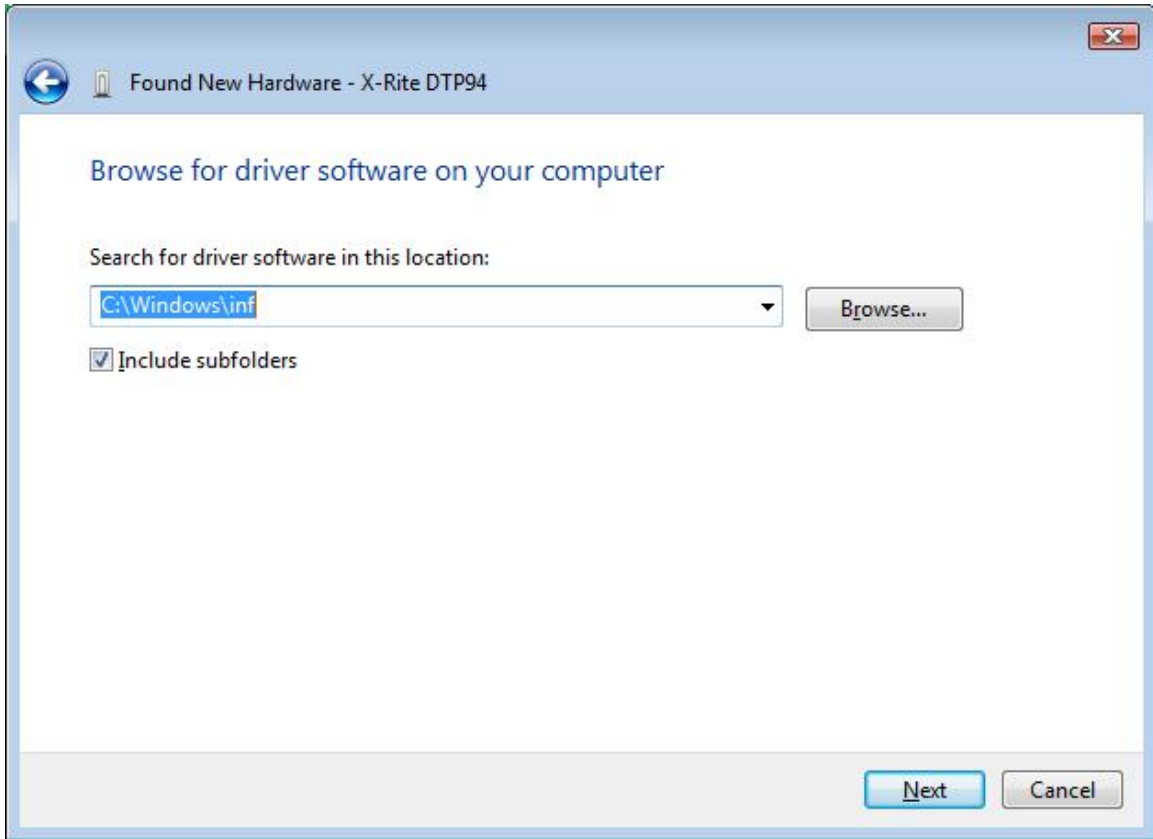
The search may take several minutes.



You won't see this dialog box if the system finds the driver automatically. If it does appear, then click on "I don't have the disc. Show me other options."



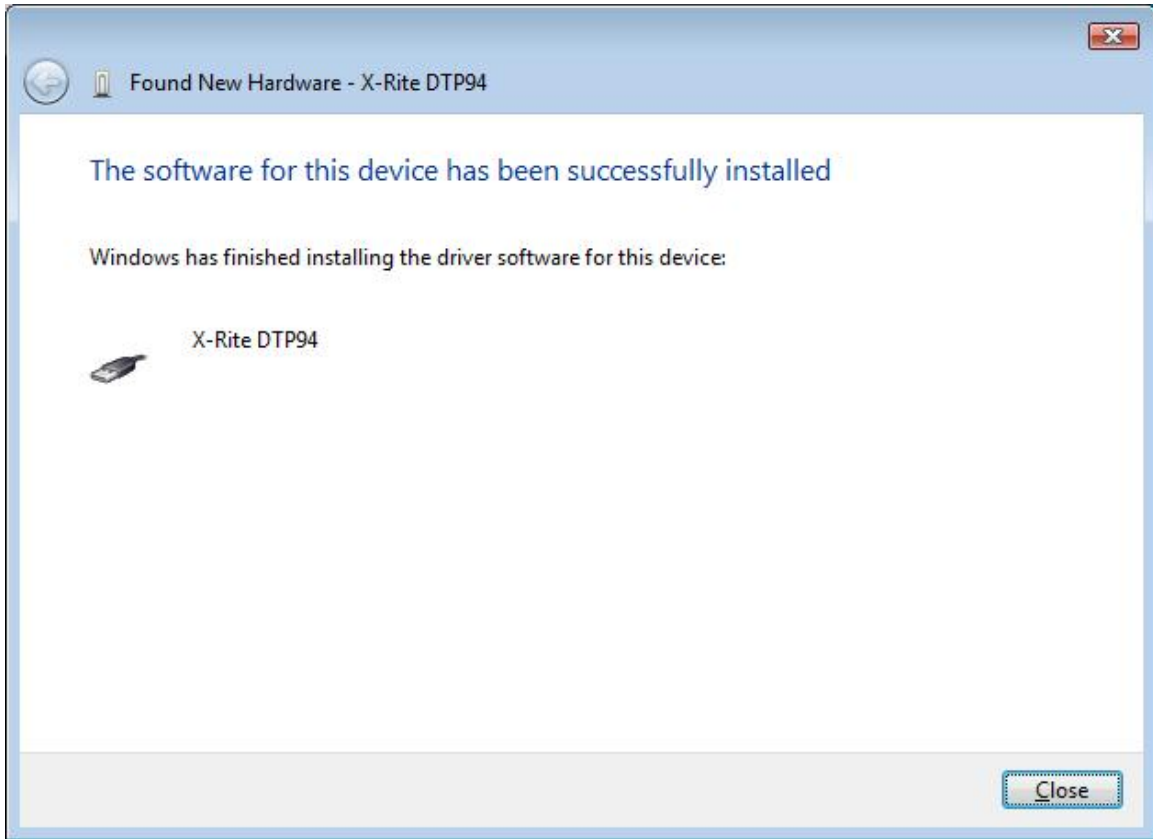
Then select “Browse my computer for driver software”



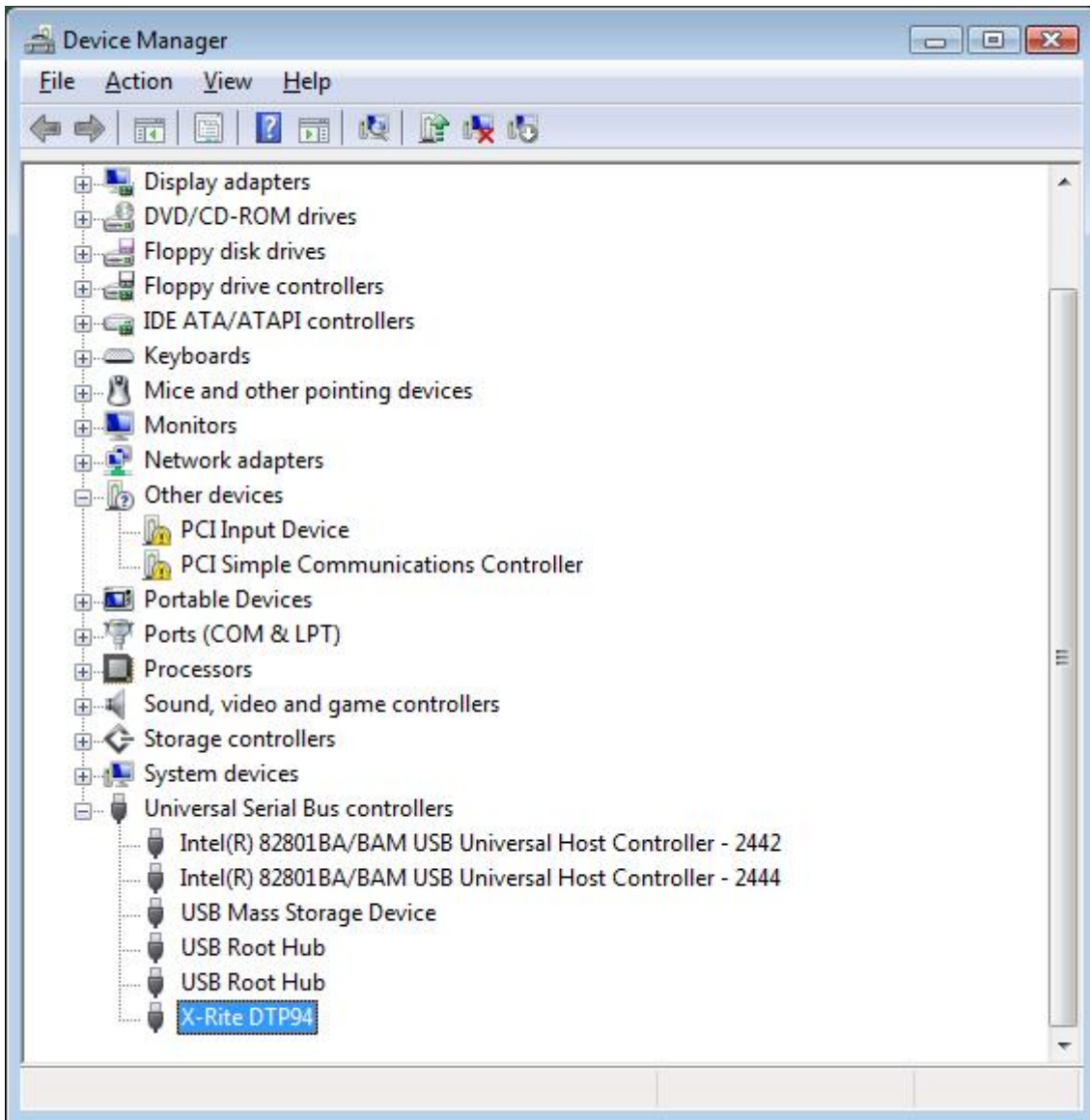
Select the location where your driver has been copied. Then click “Next”



Click “Install”.



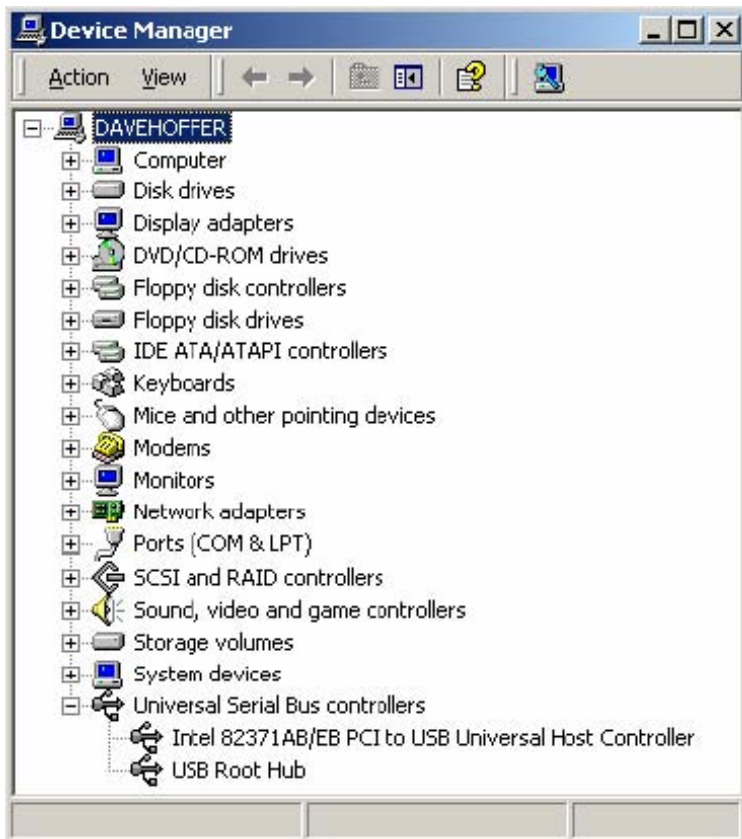
Click Close. Although you do not have to view the Device Manager after installation, if you do you will see the device you just installed has been added to the Universal Serial Bus controller's section.



Windows 2000/XP: First time install

User has never installed any X-Rite USB device.

Although you do not need to look at the device manager to perform a first time install, you can verify that the system does not already have an X-Rite USB device installed. To view the device manager, right click on the My Computer icon on the desktop, select Properties, select the Hardware tab, and finally select Device Manager. If you expand the Universal Serial Bus controller's section you will not find the any X-Rite USB device(s) listed if this system has no X-Rite USB device(s).



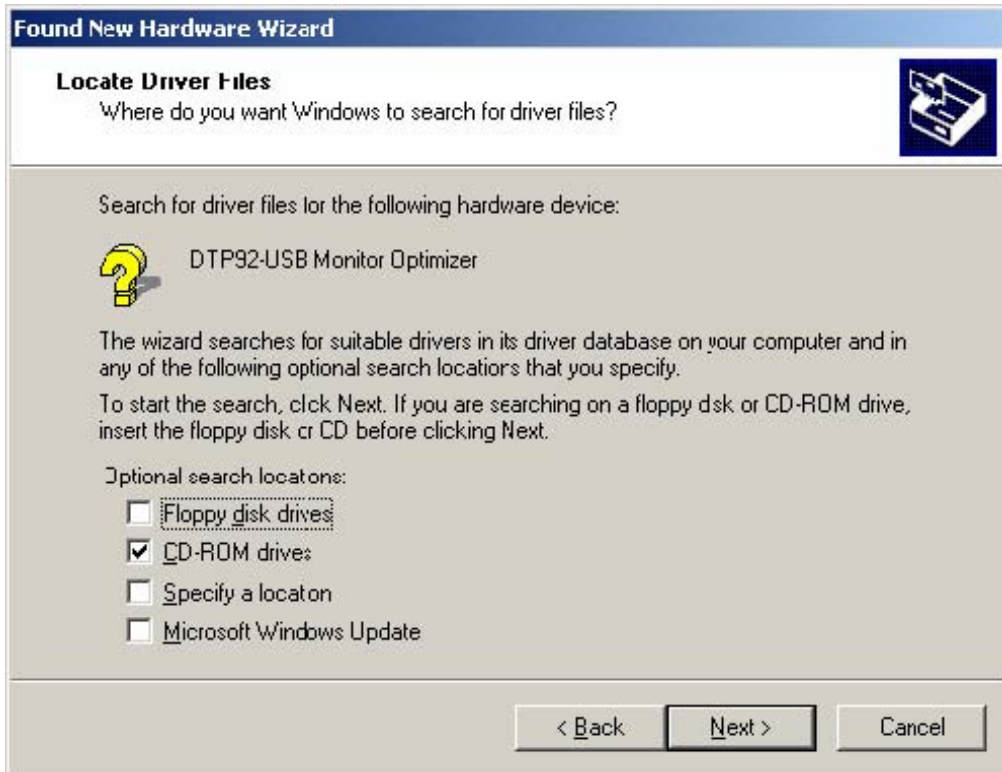
Plug in the X-Rite device you wish to use, such as an X-Rite DTP92 (monitor calibrator instrument).



Select Next.



Leave the Recommended option selected. Insert the X-Rite application's setup media in the appropriate device. Typically this will be on CD-ROM. Select Next.



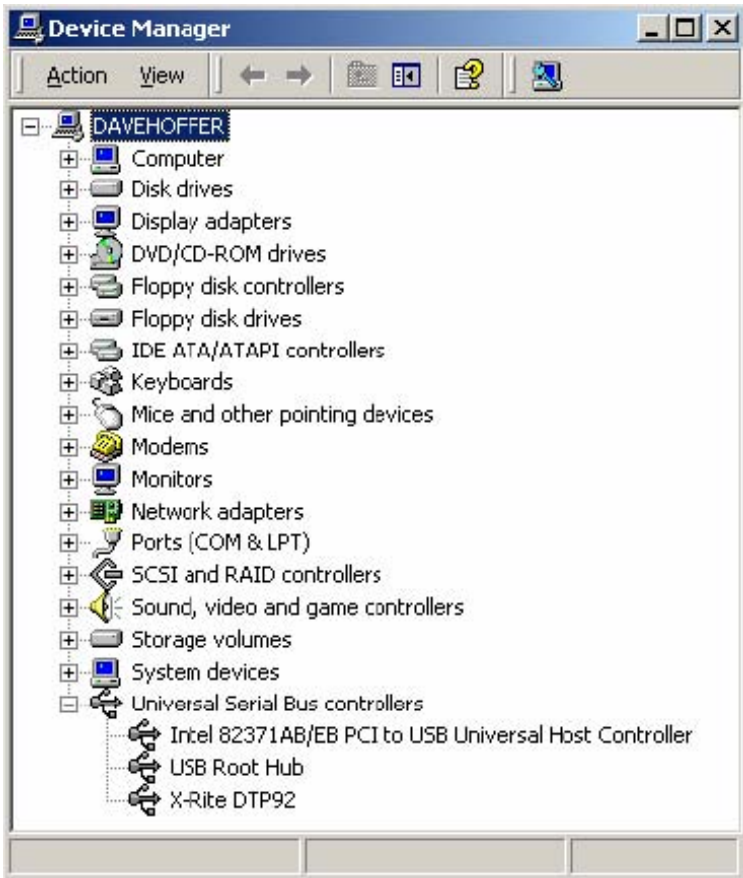
Verify that the correct checkbox is selected for the setup media that you inserted. Typically this will be the CD-ROM drive. All other checkboxes should be un-checked. Select Next.



Select Next.



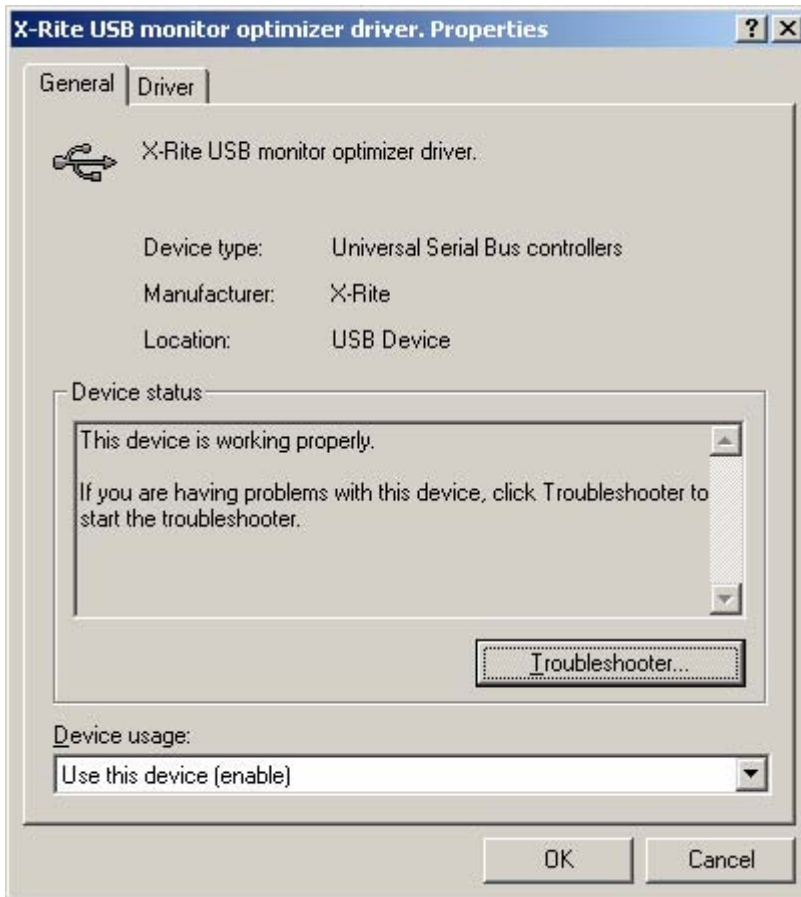
Click Finish. Although you do not have to view the Device Manager after installation, if you do you will see the device you just installed has been added to the Universal Serial Bus controller's section.



Windows 2000/XP: Driver Update

User has previously installed other X-Rite USB device(s).

View the device manager by right clicking on the My Computer icon on the desktop, select Properties, select the Hardware tab, and finally select Device Manager. Expand the Universal Serial Bus controller's section to find the X-Rite USB device(s) on this system. Select the device for which you wish to update the driver, then right click and select properties.



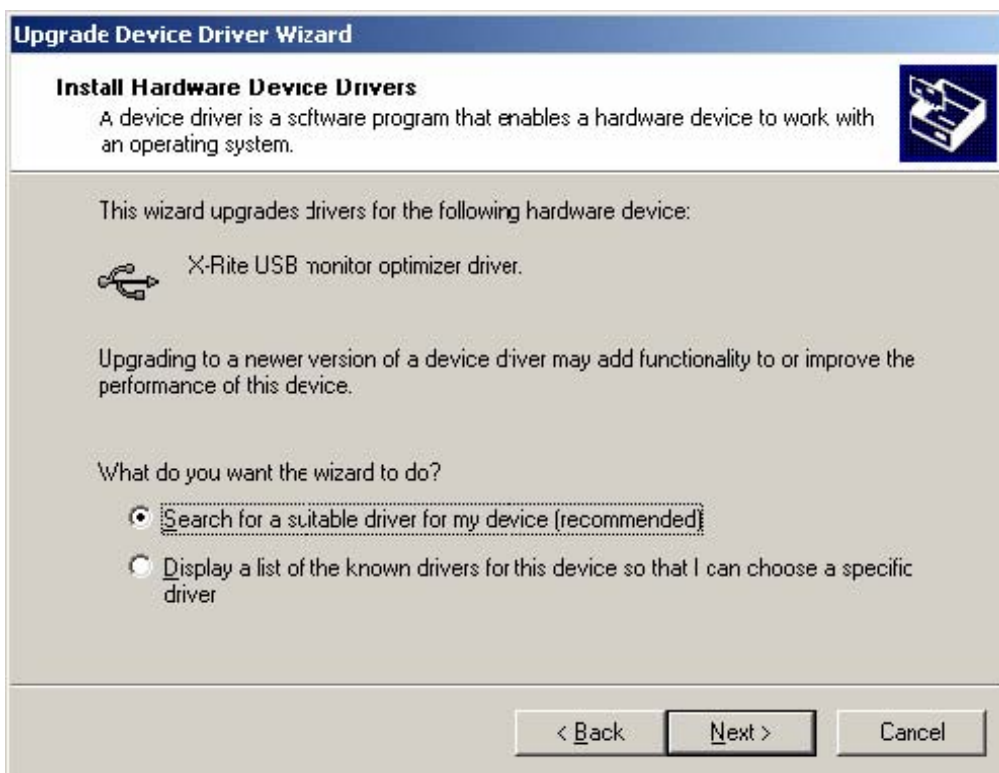
Click the Driver tab.



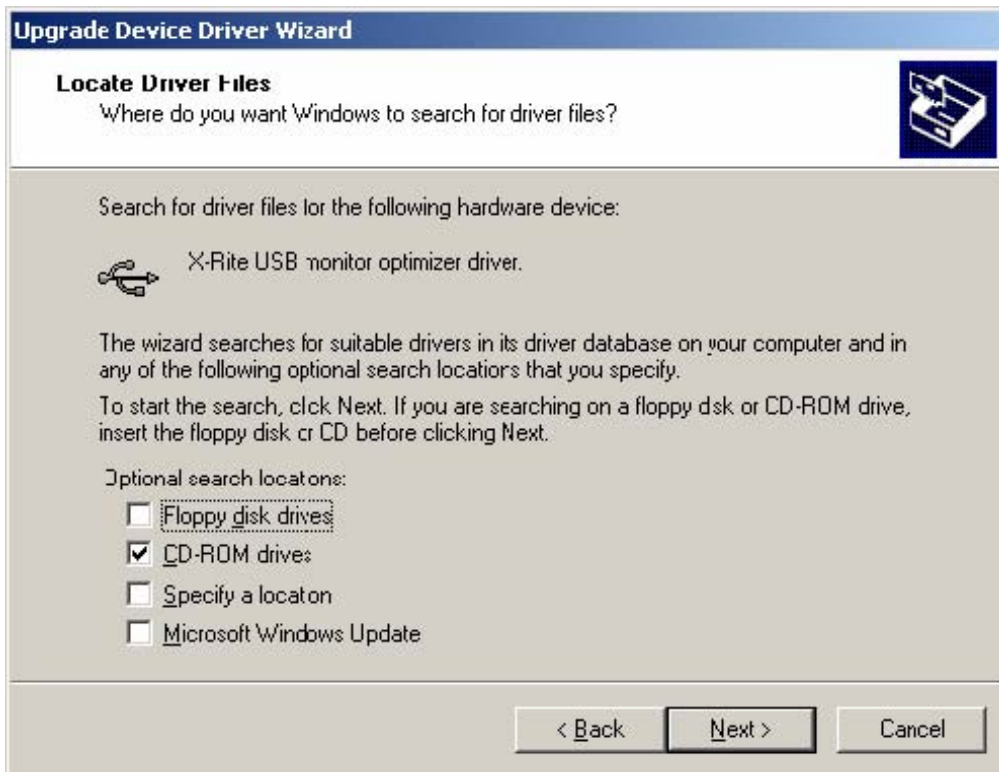
Select Update Driver...



Select Next.



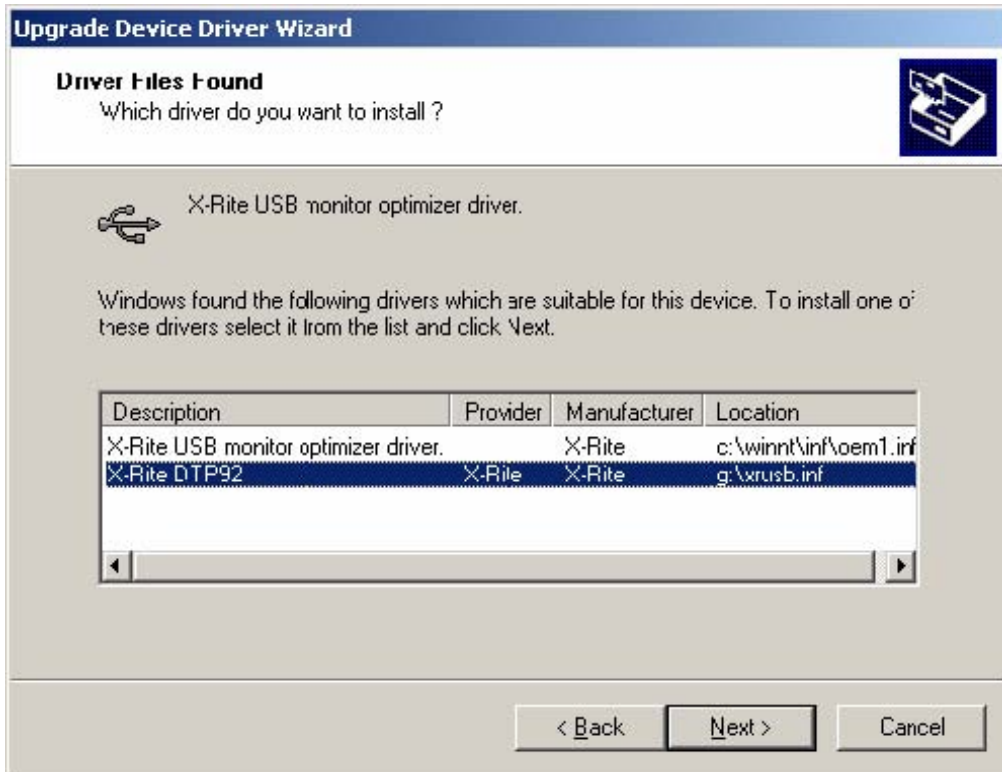
Select Next.



Verify that the correct checkbox is selected for the setup media that you inserted. Typically this will be the CD-ROM drive. All other checkboxes should be un-checked. Select Next.



Verify that the 'Install one of the other drivers' checkbox is selected. Select Next.



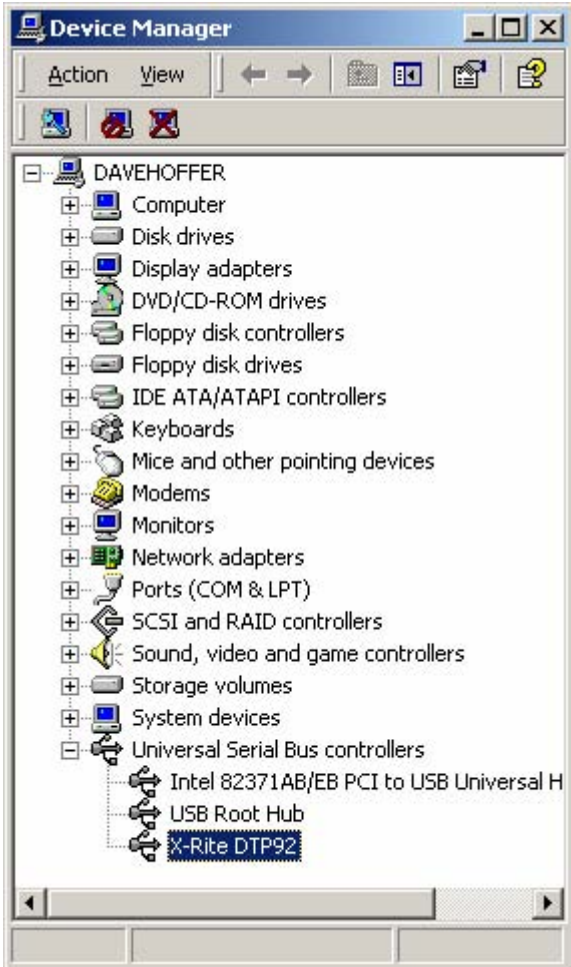
Select the driver from the list that matches the Location from which you just installed the new driver (typically the application setup media on CD-ROM). Note: If this location is not in the list, the reason is that Windows thought that an existing INF file on your system was just as valid as the one that you selected. It is not recommended that you go forward at this point. It is recommended that you cancel the update, delete the offending INF file(s) on your system, and restart the update.

Select Next.



Select Finish.

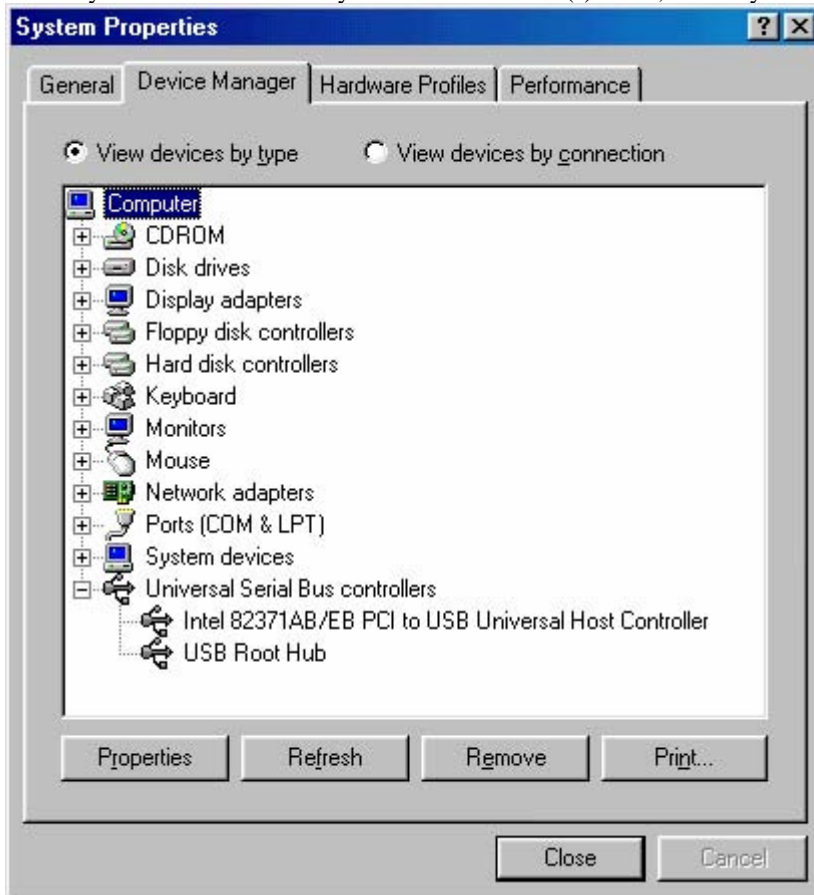
Although you do not have to view the Device Manager after installation, if you do you will see the device you just updated has been modified in the Universal Serial Bus controller's section.



Windows 98: First time install

User has never installed any X-Rite USB device.

Although you do not need to look at the system properties to perform a first time install, you can verify that the system does not already have an X-Rite USB device installed. To view system properties, right click on the My Computer icon on the desktop, select Properties and select the Device Manager tab. You can then see all the devices currently connected to your computer. If you expand the Universal Serial Bus controller's section you will not find the any X-Rite USB device(s) listed, if this system has no X-Rite USB device(s).



Plug in the X-Rite device you wish to use, such as an X-Rite DTP92 (monitor calibrator instrument).



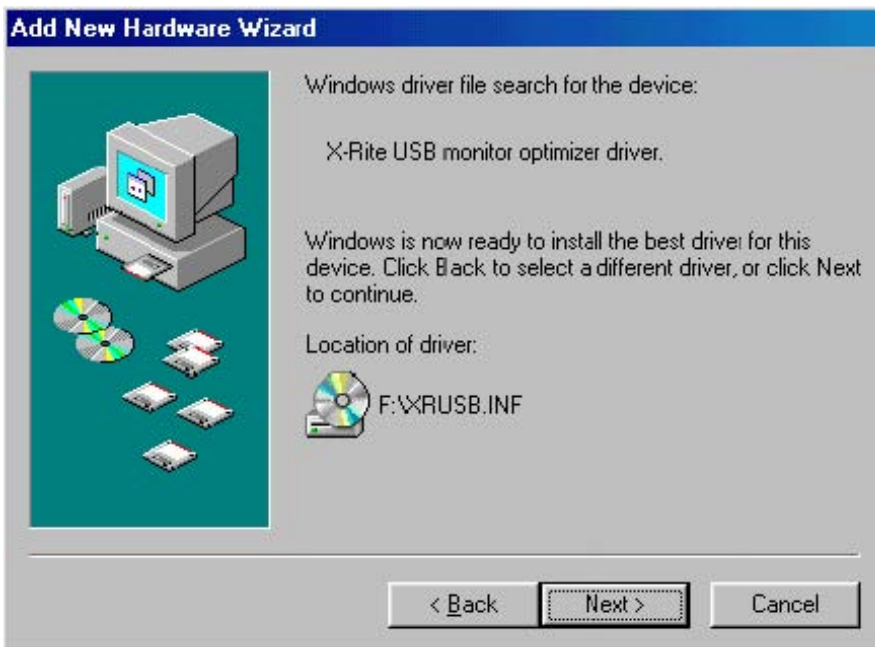
Select Next.



Leave the Recommended option selected. Insert the X-Rite application's setup media in the appropriate device. Typically this will be on CD-ROM. Select Next.



Verify that the correct checkbox is selected for the setup media that you inserted. Typically this will be the CD-ROM drive. All other checkboxes should be un-checked.

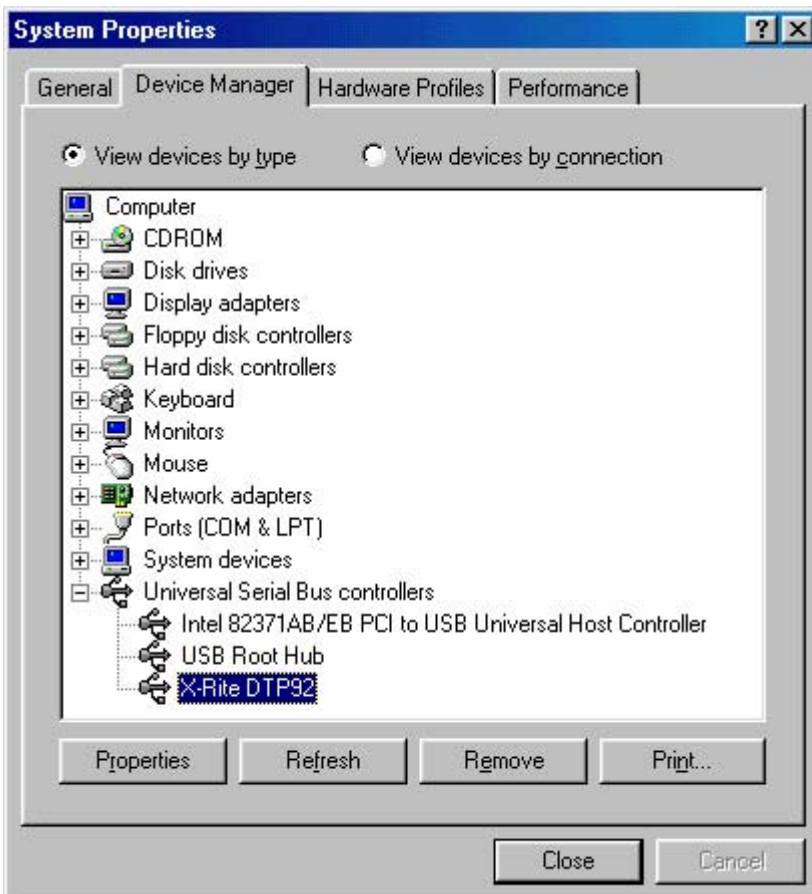


Select Next.



Click Finish.

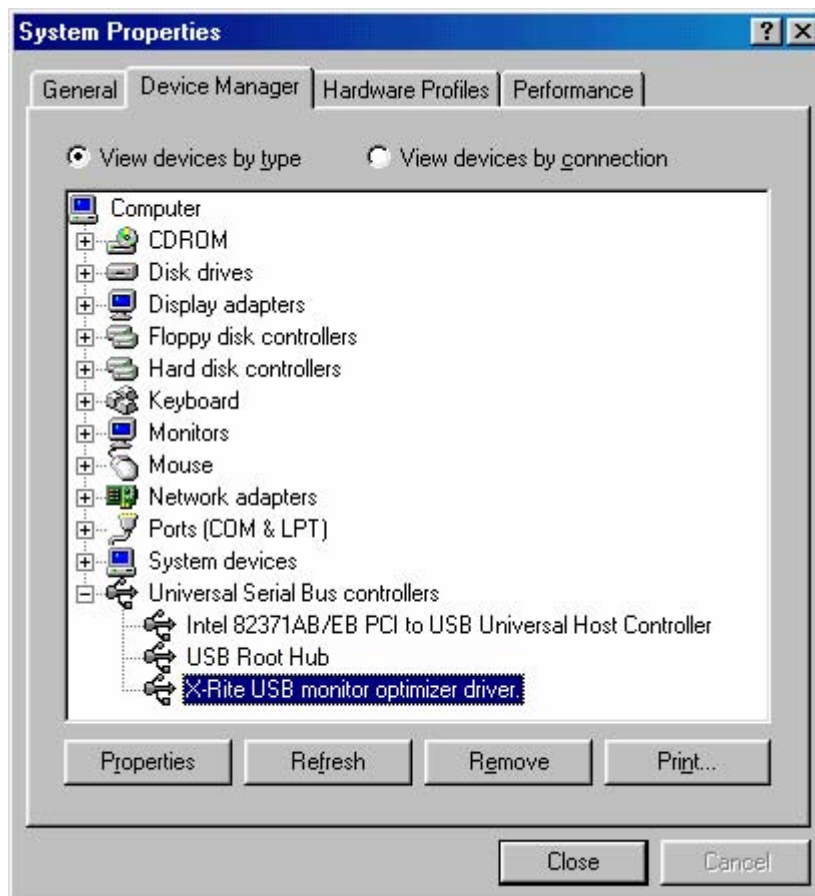
Although you do not need to look at the system properties after a first time install, if you do you will see that Windows has installed the X-Rite device and has associated a driver with this device on your system.



Windows 98: Update installation

User has previously installed X-Rite USB device(s).

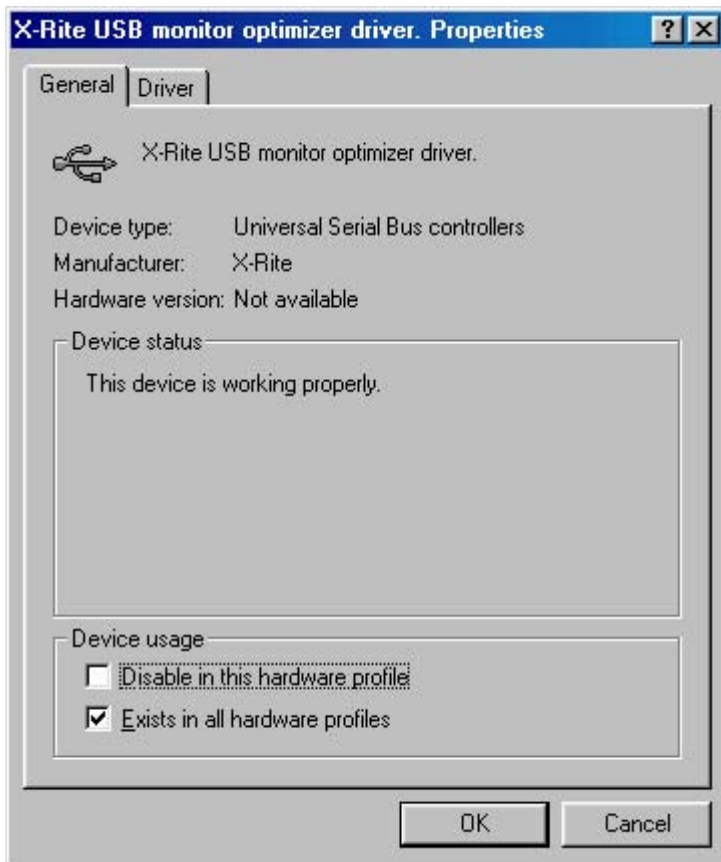
Right click on the My Computer icon on the desktop, select Properties and select the Device Manager tab. You can then see all the devices currently connected to your computer. Expand the Universal Serial Bus controllers section, you will find all the X-Rite USB device(s) listed (if none are listed you cannot do an update installation, rather you must do a first time install). Select the device you want to update and then click Properties.



Click on Remove to remove the X-Rite driver. And unplug the instrument. Then you need to manually remove the following files:

- C:\windows\inf\xrusb.inf
- C:\windows\system32\drivers\xrusb.sys
- C:\windows\inf\others\X-RiteXrUsb.inf

Plug in the instrument and click on the Refresh button in the system Properties panel, and then click on Properties for the X-Rite USB Instrument.



Click the Driver tab.



Click Update Driver... button.



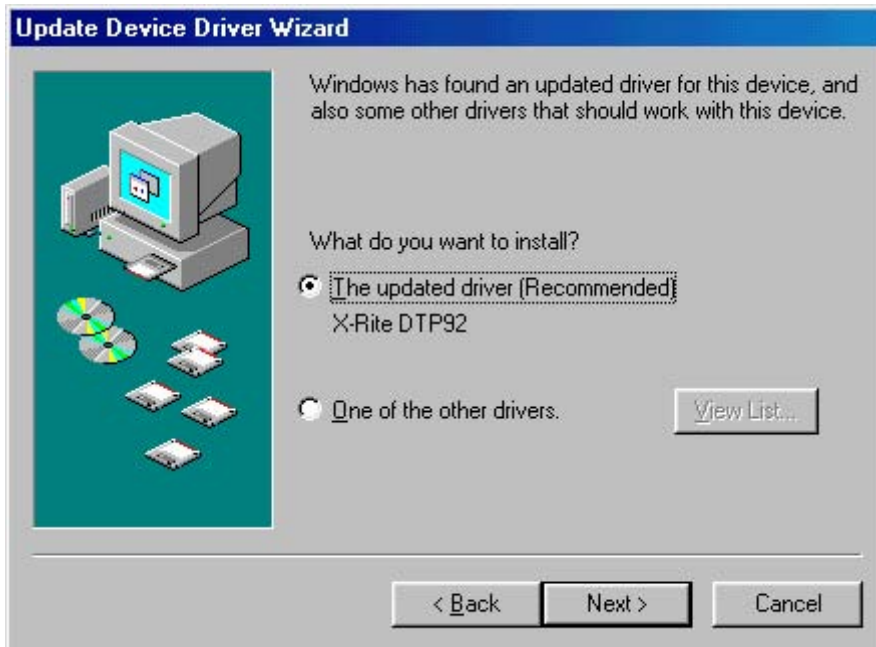
Select Next.



Leave the Recommended option selected. Insert the X-Rite application's setup media in the appropriate device. Typically this will be on CD-ROM. Select Next.



It is important to note here that you must make sure that the previous application setup media not be in a logical drive on your computer right now. Typically this would not be a problem as users do not normally have multiple CD-ROM drives so they could have the old and new application setup media both connected to the computer at the same time. However if this is the case, remove the previous application setup media from your computer before proceeding.



Leave the Recommended option selected. Select Next.



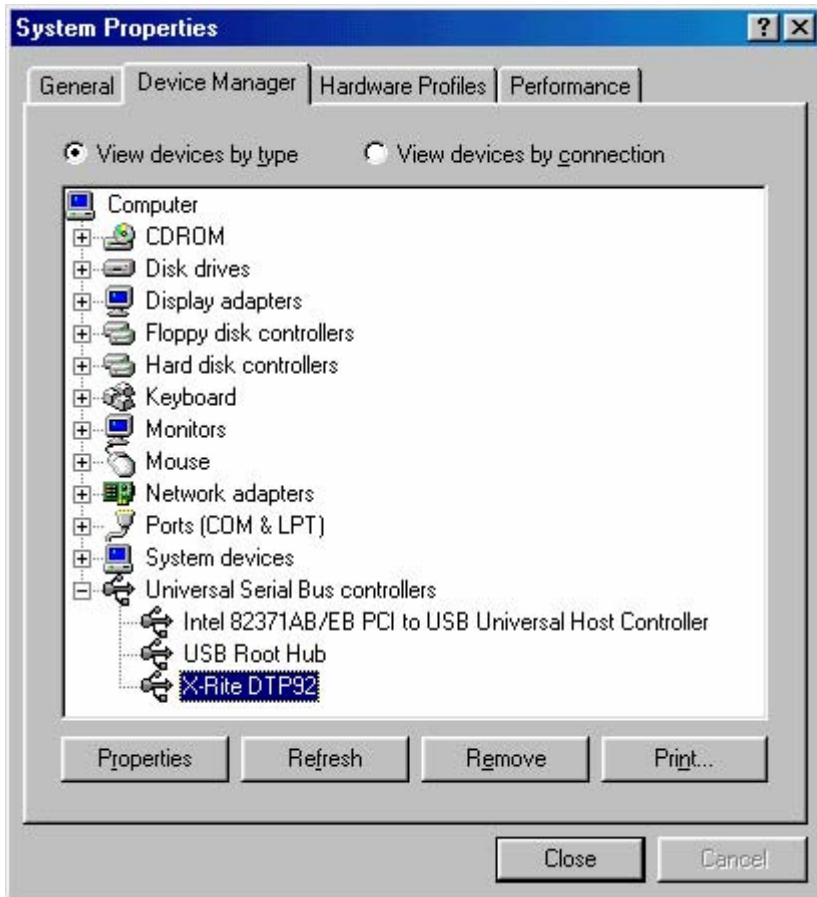
The location of the driver must match the location of your application's setup media. Select Next. Windows will rebuild the driver database files (this may take a little time).



Click Finish.



Click Close.



In the system properties viewer, you will see the updated X-Rite device in the Universal Serial Bus controller's section. Click Close. And reboot the computer.