

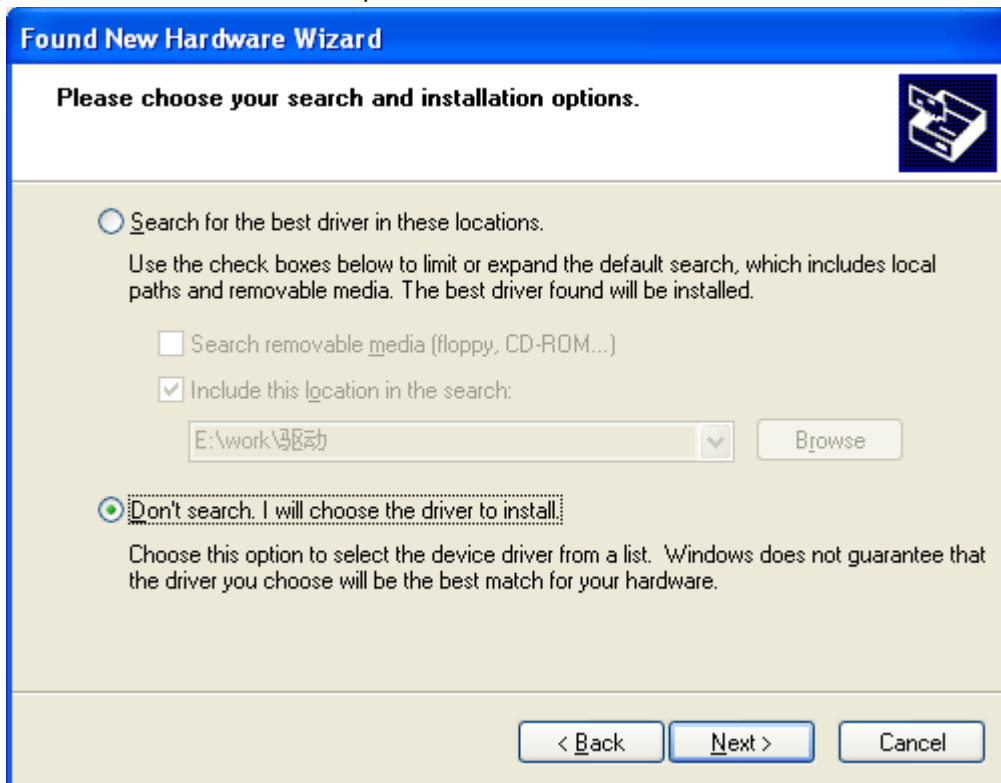
When the USB cable to the host, the operating system will be prompted to find new hardware and install the driver required.



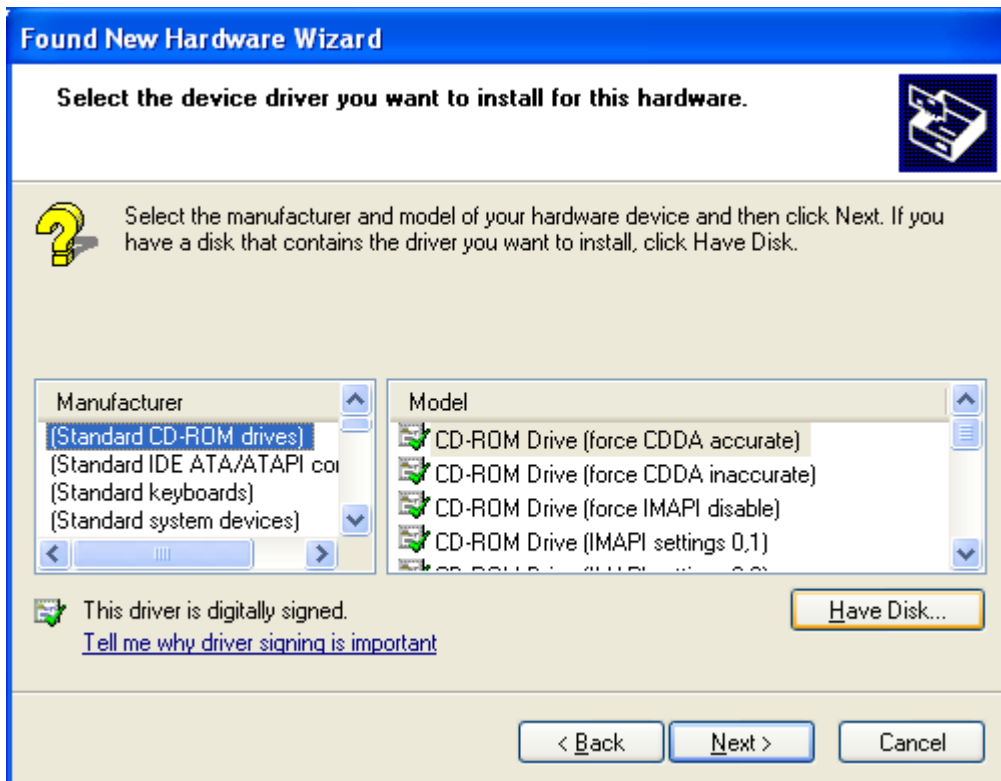
Select "Install from a list or specific location[Advanced]" and then select Next.



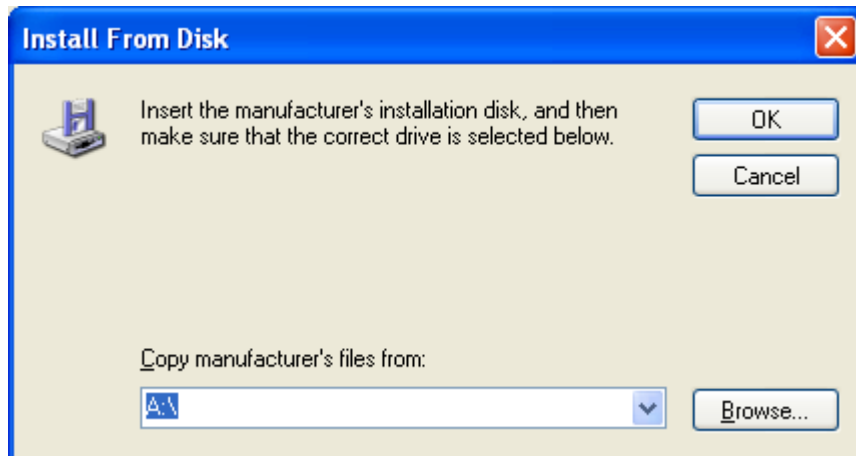
Select "Install from a list or specific location" and then select Next.



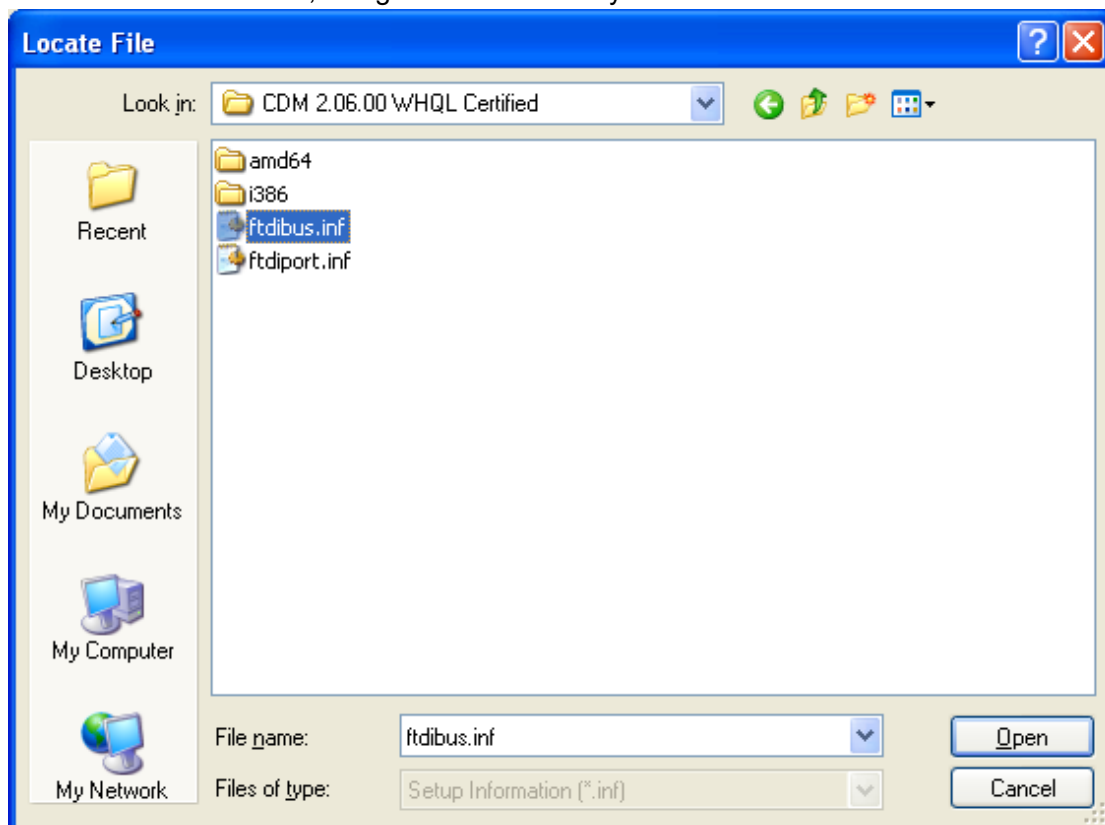
Select "Do not search, I will choose the driver to install" and then select Next.



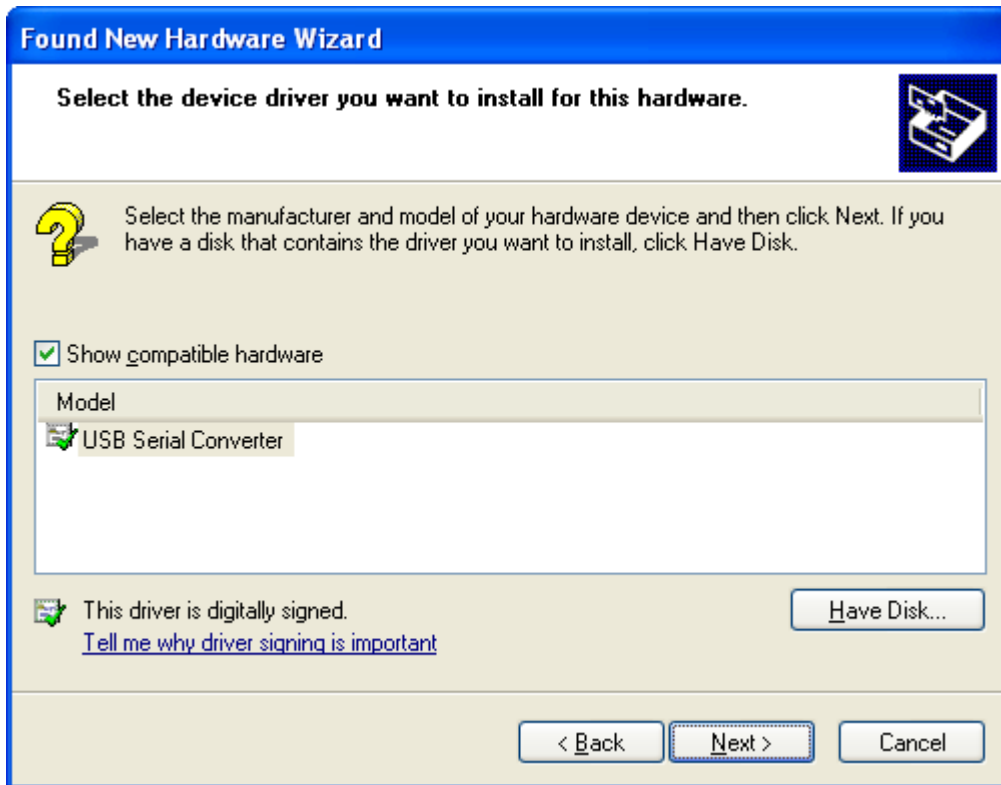
Click button "Have Disk".



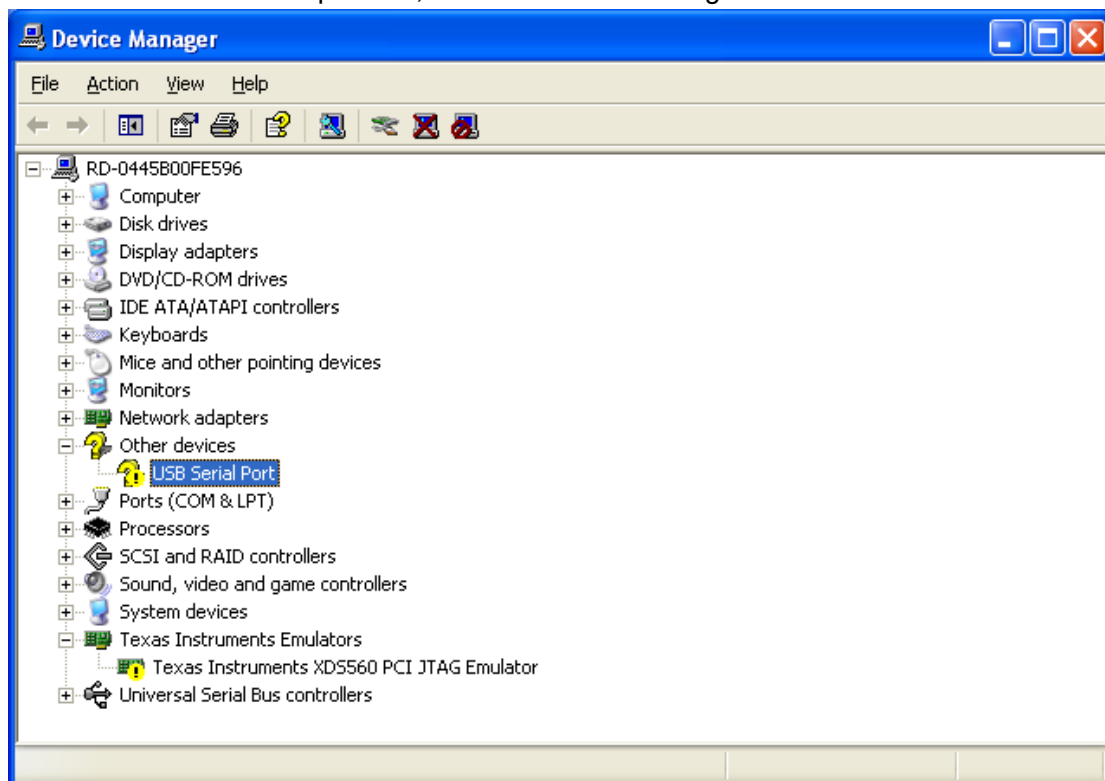
Select the "Browse", navigate to the directory where the folder drive.



Select the file ftdibus.inf, then OK, and in the "Found New Hardware Wizard" dialog box, choose "Next".



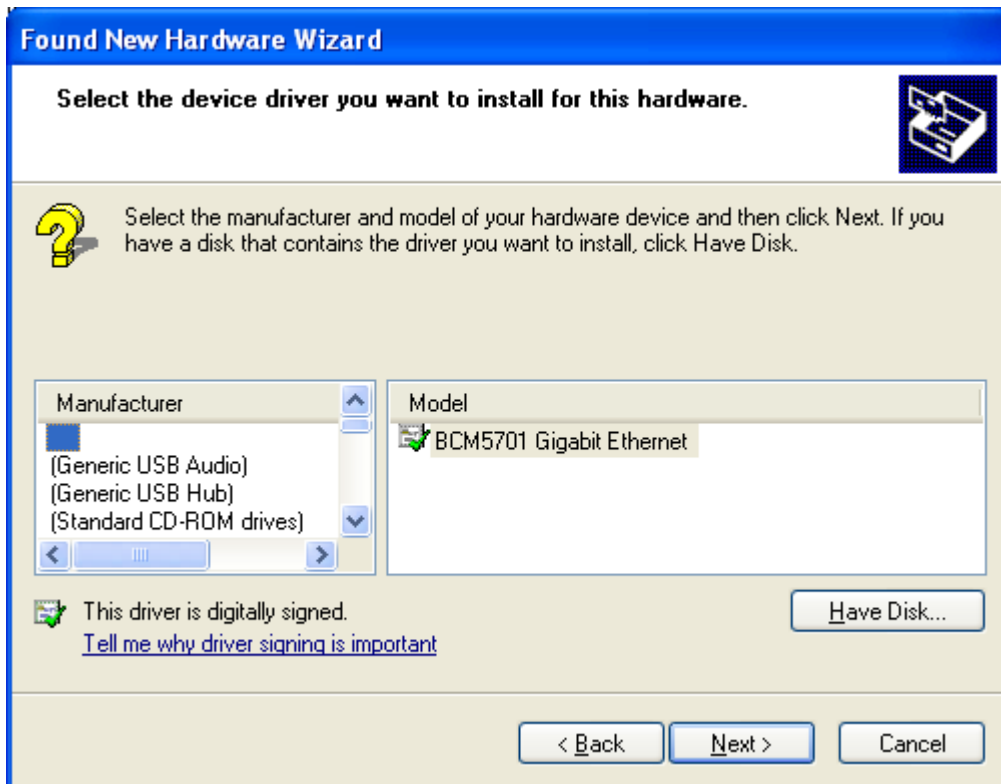
After the installation process, within the Device Manger will show “USB Serial Port”.



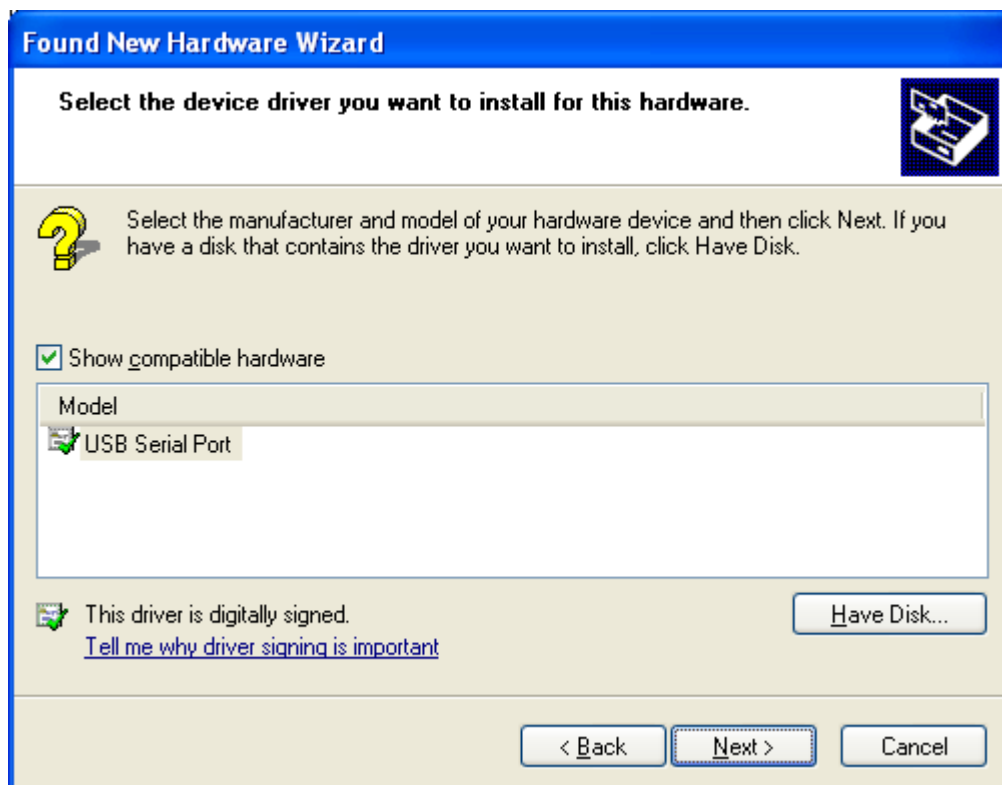
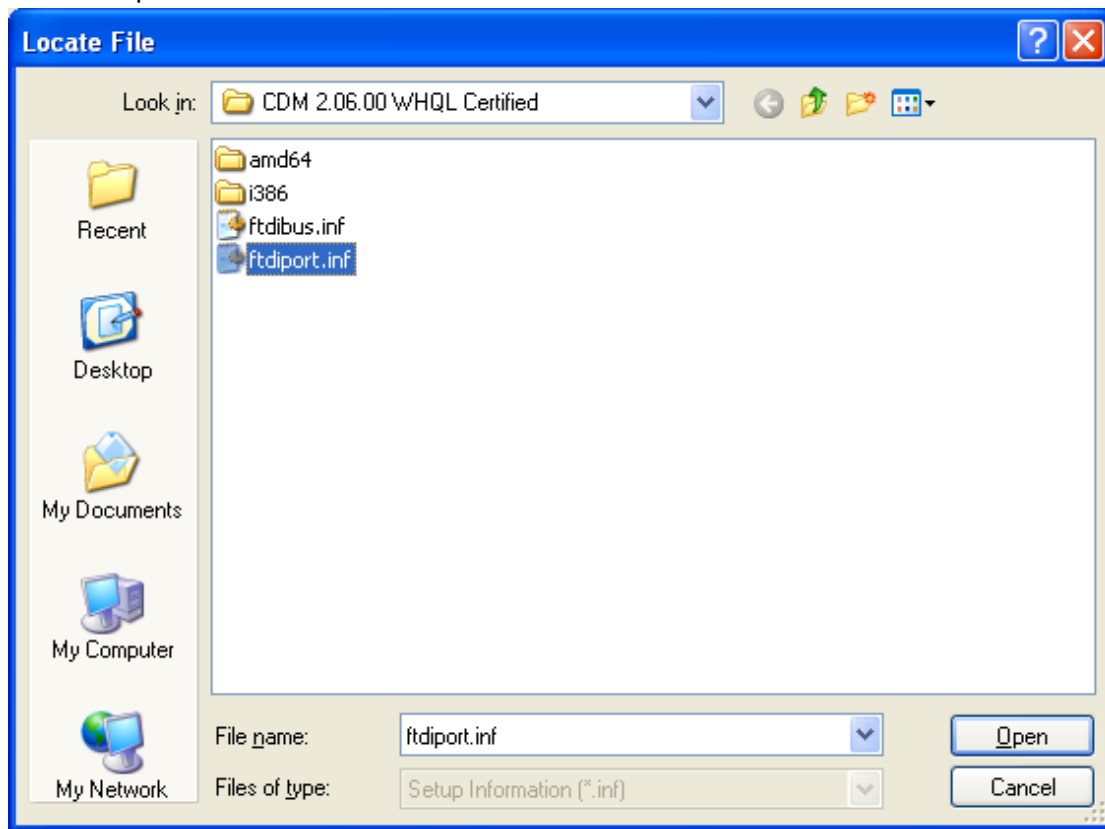
Operating system will still be prompted to find new hardware wizard.



Select "Install from a list or specific location [Advanced]" and then select "Next". The remaining operation is consistent with the foregoing. Until the following dialog box appears.

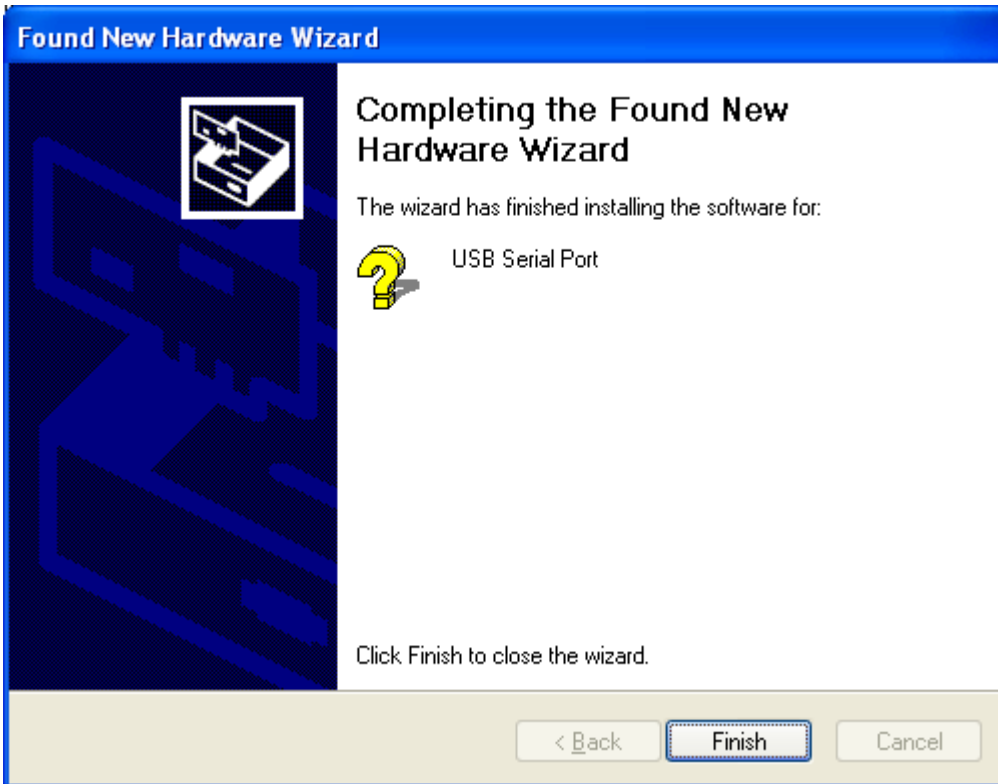


Select "Have Disk", and manually navigate to the driver to the driver location, select the file ftdiport.inf.



Then select "Next", the operating system will automatically install the driver.

After installation, the prompt window appears.



View Device Manager once again. The port number of the COM appears in the following of the "USB Serial Port". Specific values relate with the status of the system port.

