

# HEAT PRESS

## Electric Flatironing Machine

Can be opened and pressed automatically

SKU: H-PRESS/2938


WhatsApp: 060 600 6000

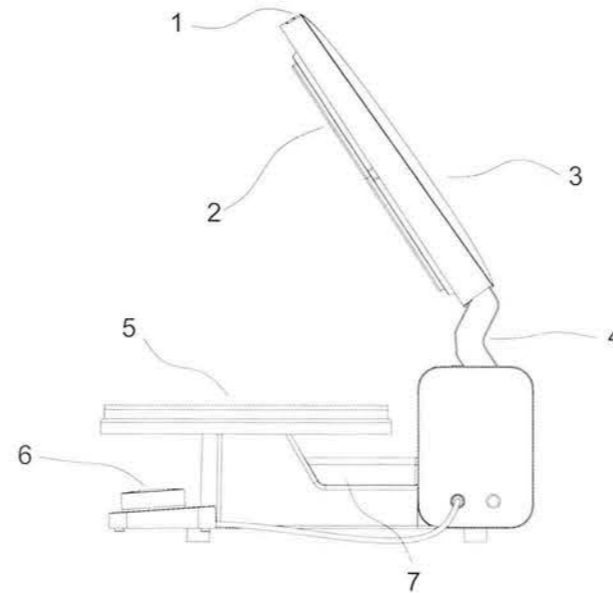
Website: am.co.za

Email: services@am.co.za

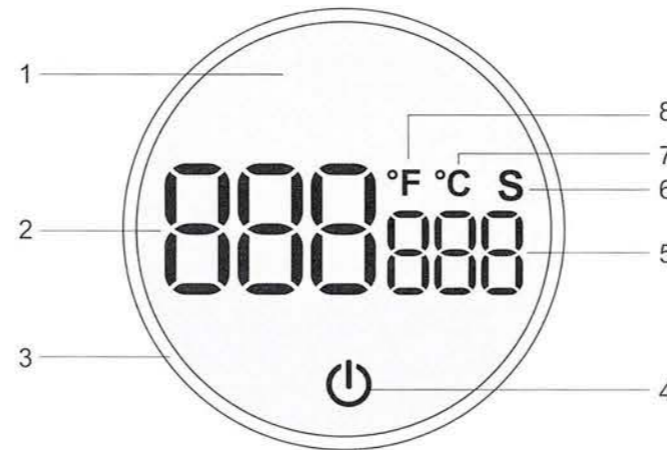


## User Manual

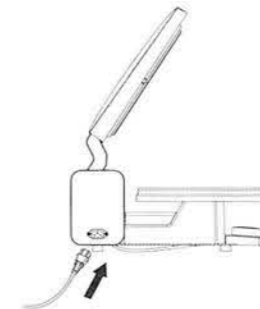
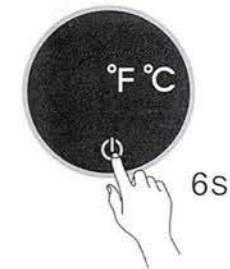
 Warnings must be followed carefully to avoid body injury.



1.Start and stop buttons 2. Heating plate 3. Upper insulation shell  
4.Press down holder 5. Heat insulation pad 6.LED Display 7. Geared motor



1.LOGO 2.Temperature display 3.Knob switch 4.Start button  
5.Time display 6.Time unit 7.Centigrade 8.Fahrenheit



°F ⇌ °C

1. In shutdown state.
2. Press and hold the start button
3. Turn the switch to select the temperature unit.
4. Short press the start button to start the machine.

### Temperature setting

1. Turn the display half a turn to the right to enter the temperature setting after a beep sound
2. Enter the temperature setting
3. Turn the switch to the right to increase the temperature (+)
4. Turn the switch to the left to decrease the temperature (-)

### Time setting

1. Turn the display half a turn to the left to enter the time setting after a beep sound
2. Enter the countdown setting
3. Turn the switch to the right to increase the time (+)
4. Turn the switch to the left to decrease the time (-)

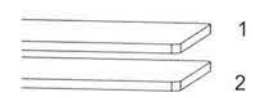
### Getting Started

1. Connect the power cord  
Connect the aviation connector of the heating plate, then connect the power cord to the power socket on the side of the machine and the other end into the AC socket.

2. Startup  
After power on, short press the start button to start the machine. After startup, the machine will automatically heat up.

3. Shutdown  
Press and hold the power button to shut down.

4. Auto shutdown  
The machine will automatically shut down if there is no operation within 120min.



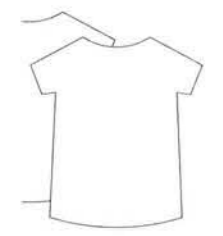
Placing sequence of lower plate pad  
 1. Top: White high temperature blanket  
 2. Middle: Blue sponge



Transfer material: Heat transfer paper  
 Turn the switch to the right to set the temperature to 200°C.  
 Turn the switch to the left to set the time to 60s.



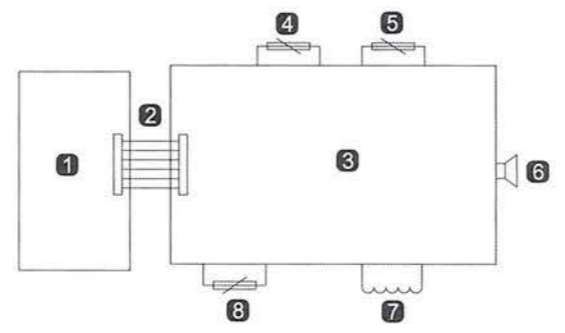
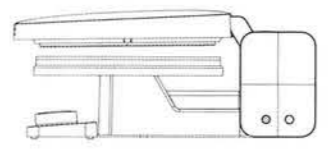
Transfer material: PET film  
 Turn the switch to the right to set the temperature to 185°C.  
 Turn the switch to the left to set the time to 25s.



to be printed.

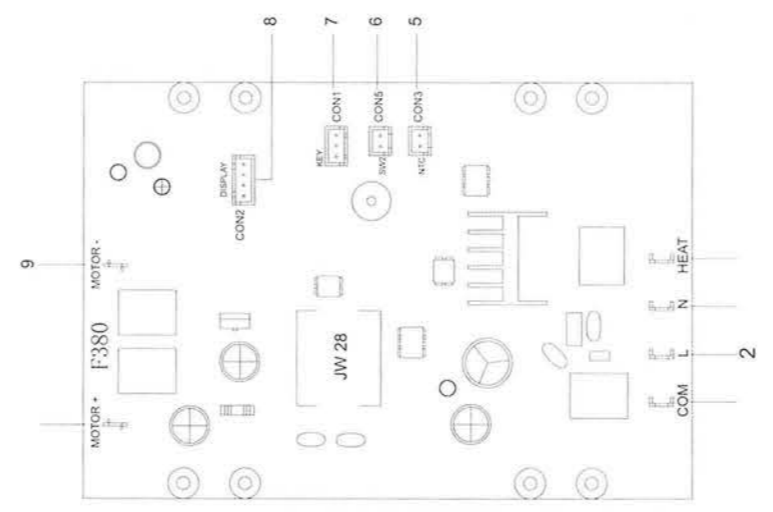


2. Turn on the heating plate to increase the temperature.



- 1 Main control circuit board
- 2 Connecting the flat cable
- 3 Power board
- 4 NTC temperature sensor
- 5 Magnetic switch
- 6 Buzzer
- 7 Heating coil
- 8 Thermal Fuse

### Wiring diagram of circuit board



- 1. Output zero line
- 2. Input zero line
- 3. Input live line
- 4. Output live line
- 5. Temperature probe
- 6. Sensor switch
- 7. Button
- 8. Display
- 9. Motor-
- 10. Motor+

The products are strictly based on the Consumer Protection Law of the People's Republic of China and the Product Quality Law of the People's Republic of China. The services are as follows:  
 Within 12 months this product has the performance failure listed in the Product Performance Failure Table". It is confirmed by manufacturer and can be used for maintenance service free of charge. If out of validity, damage caused by force majeure, or human causes, the machine is not covered by the warranty, repair in charge.

### Safety instruction

Before operating this unit, please read these instructions completely and save them.  
 Notice:  
 1. Keep unplug when moving the machine.  
 2. Keep unplug when installing accessories.  
 3. Place on a flat and stable platform and operate under ventilated conditions.  
 4. Wear special protective equipment when operating the machine

### Warning

- Improper use may result in electric shock, fire, personal injury and other damage.
- 1. Do not use this machine in a hazardous location.
- 2. Do not use when the machine is not working properly.
- 3. Do not allow children or adults who do not understand this manual to operate this machine.
- 4. Do not disassemble and repair this machine.
- 5. Do not use an unsuitable AC outlet.
- 6. Do not touch the heating plate when the machine heating



### Basic parameters

Product name:	Electric high pressure heat press machine
Model:	F380
Heating method:	Heating coil
Rated voltage/frequency:	220-240V~50Hz 930W
Rated voltage/frequency:	120V~60Hz 750W
Heating plate size:	290mmx380mm
Temperature range:	40°C-205°C(104°F-401°F)
Time range:	1-999s
Net weight:	15.1kg
Gross weight:	17.1kg
Outer box size:	575*480*280mm
Outer box volume:	0.077 cube

### Warranty

Type	Items	Period
Whole machine	Parts of machine (excl. accessories)	1 year
Accessories	List the accessories	Not covered