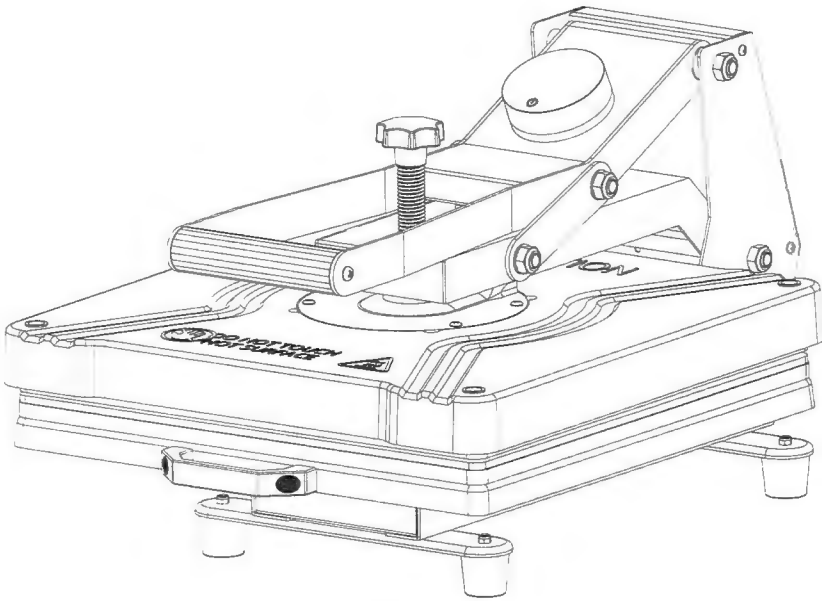


HEAT PRESS

Flatbed Heat Press Machine

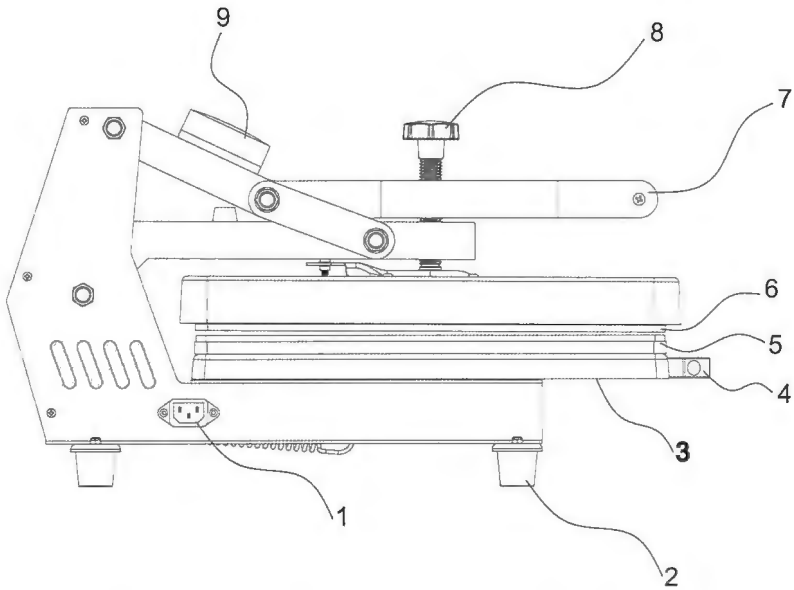


User Manual

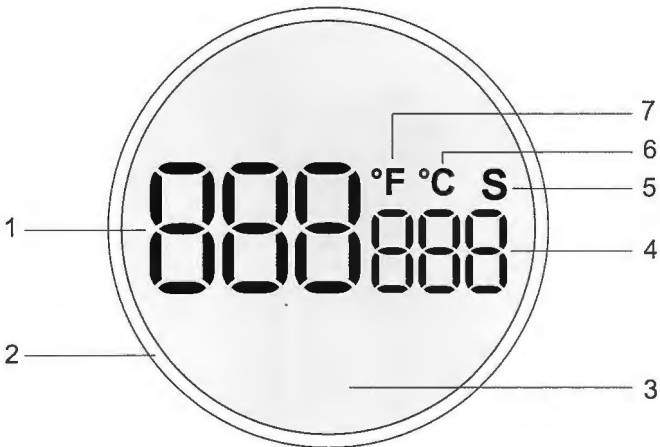


Warnings must be followed carefully to avoid body injury.

Introduction



1. Power socket 2. Auxiliary feet 3. Lower plate 4. Handrail
5. Lower plate pad 6. Upper heating plate 7. Pressure handle
8. Pressure adjusting nut 9. Display



1. Temperature display 2. Knob switch 3. Start button 4. Time display
5. Time unit 6. Centigrade 7. Fahrenheit

Temperature unit conversion



°F ⇌ °C

1. In shutdown state.
2. Press and hold the start button for 6s.
3. Turn the switch to select the required temperature unit.
4. Short press the start button to start the machine.



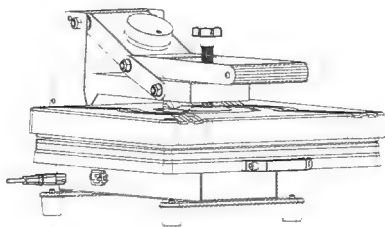
Temperature setting

1. Turn the display half a turn to the right.
2. Enter the temperature setting mode after a beep sound
3. Turn the switch to the right to increase the temperature (+)
4. Turn the switch to the left to reduce the temperature (-)



Time setting

1. Turn the display half a turn to the left
2. Enter the countdown setting mode after a beep sound
3. Turn the switch to the right to increase the time (+)
4. Turn the switch to the left to reduce the time (-)



Getting Started

1. Connect the power cord

2. Startup

After power on, short press the power button to start the machine.
After startup, the machine will automatically heat up.

3. Shutdown

Press and hold the power button for 3s to shut down.

4. Auto shutdown

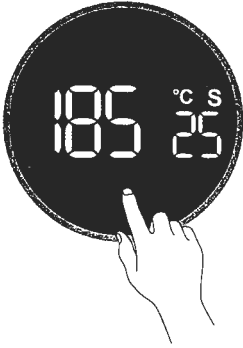
The machine will automatically shut down if there is no operation within 30min.



200 °C S
60

Transfer material: Heat transfer paper
Turn the switch to the right to set the temperature to 200°C.

Turn the switch to the left to set the time to 60s.

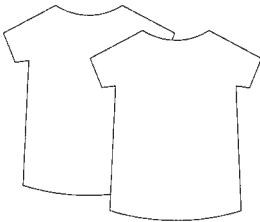


185 °C S
25

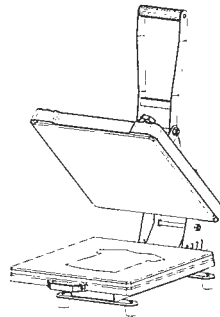
Transfer material: PET film

Turn the switch to the right to set the temperature to 185°C.

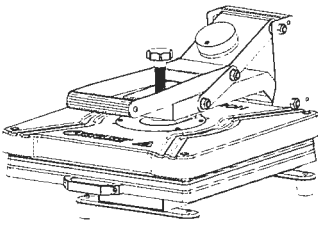
Turn the switch to the left to set the time to 25s.



1. T-shirt to be printed.



2. lift up the heating plate
place the T shirt



3. Press down the handle with force to
start the countdown automatically.

Guarantee

The products are strictly based on the Consumer Protection Law of the People's Republic of China and the Product Quality Law of the People's Republic of China. The services are as follows:

Within 12 months this product has the performance failure listed in the Product Performance Failure Table". It is confirmed by manufacturer and can be used for maintenance service free of charge. If out of validity, damage caused by force majeure, or human causes, the machine is not covered by the warranty, repair in charge.

Safety instruction

Before operating this unit, please read these instructions completely and save them. Notice:

1. Keep unplug when moving the machine.
2. Keep unplug when installing accessories.
3. Place on a flat and stable platform and operate under ventilated conditions.
4. Wear special protective equipment when operating the machine

Warning

Improper use may result in electric shock, fire, personal injury and other damage.

1. Do not use this machine in a hazardous location.
2. Do not use when the machine is not working properly.
3. Do not allow children or adults who do not understand this manual to operate this machine.
4. Do not disassemble and repair this machine.
5. Do not use an unsuitable AC outlet.
6. Do not touch the heating plate when the machine heating



Basic parameters

Product name: Flatbed heat press machine
Model: F3802
Heating method: Heating plate
Rated voltage/frequency: 220-240V~50Hz 1200W
Rated voltage/frequency: 120V~60Hz 1000W
Heating plate size: 380mmx380mm
Temperature range: 40°C-205°C(104°F-401°F) Time range: 1-999s
Net weight: 15.2kg Gross weight: 17.2kg
Outer box size: 600*465*365mm
Outer box volume: 0.102 cube

Warranty

Type	Items	Period
Whole machine	Parts of machine (excl. accessories)	1 year
Accessories	List the accessories	Not covered