

# GigE Camera Kernel Driver Update

2014/11/21

## 1. Document Description

This document takes Windows 7 as an example to introduce how to update the GigE camera kernel driver.

The update can ensure that users' camera software and drivers are kept up - to - date, allowing them to enjoy the benefits brought by improvements and bug fixes.

## 2. Applicable Products

MindVision GigE Industrial Cameras

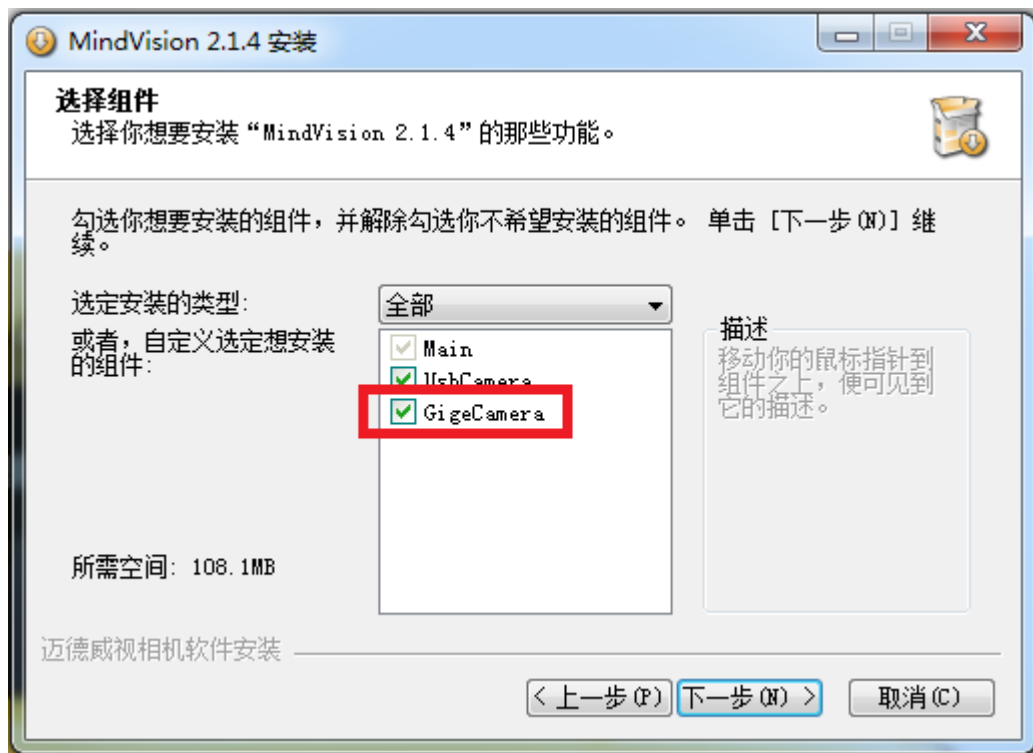
## 3. Pre - use Preparations

Before the update, users are requested to prepare the following resources:

- Software installation package: Mindvision Camera Platform Setup(x.x.x).exe
- One GigE camera

## 4. Install the New Software Package

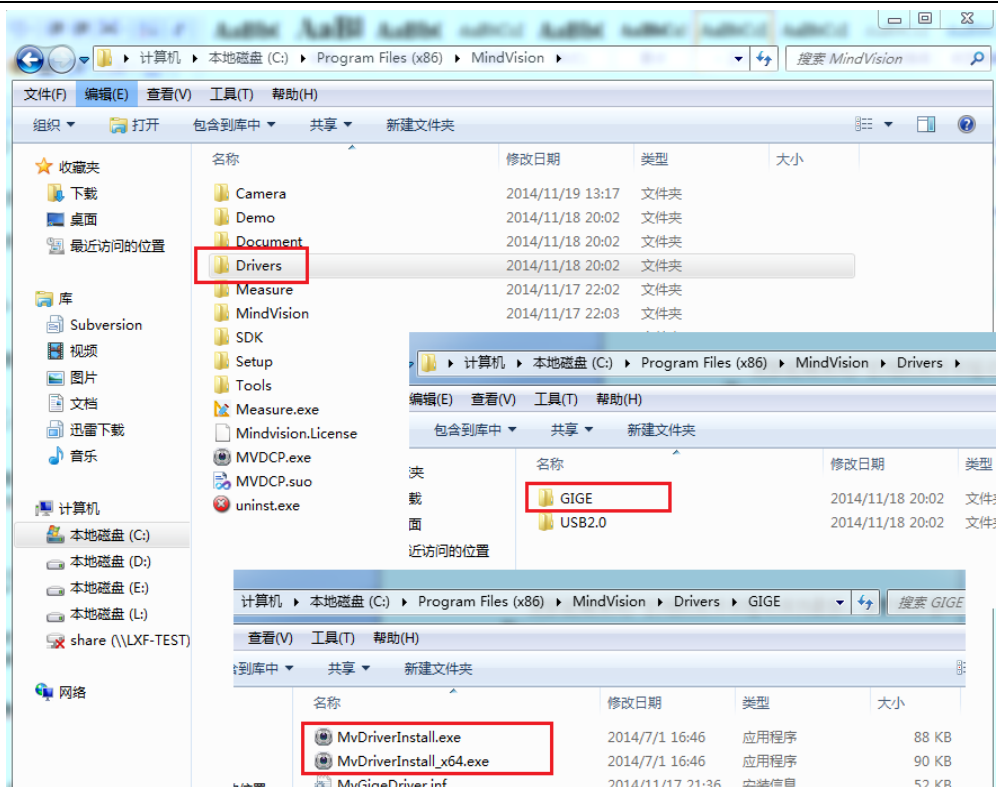
Run the latest software installation package. On the "Select Components" page, check GigeCamera (it is selected by default).



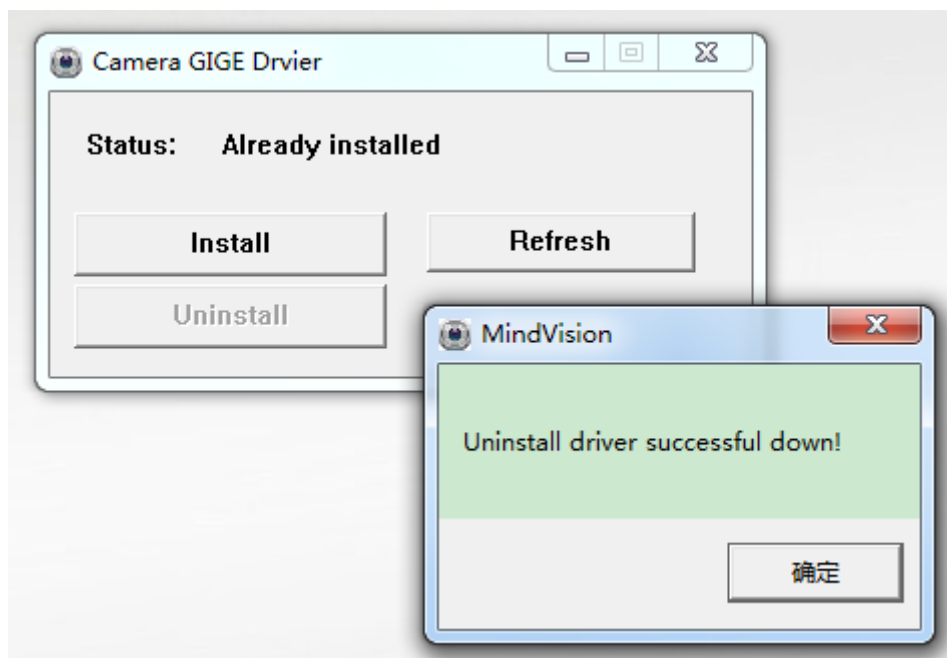
## 5. Manually Update the Driver

When the new version of the software installation package is installed over the old one, it will not automatically overwrite the old - version kernel driver. Manual update is required first, and the method is as follows:

Open the software installation directory and then open the.\ Drivers\GIGE folder.



Find MvDriverInstall.exe. For 64 - bit systems, select MvDriverInstall\_x64.exe. Double - click to run it, and click "uninstal" until the uninstallation is completed.



Then click "install" to start the installation. If the installation is successful, a prompt will indicate that the installation has been completed. If the installation fails, you need to restart the computer and then repeat the above steps.

## 6. Check if the Driver is Installed Successfully

Connect the camera, open the "Demo Program.exe", and check whether the version number of the driver in the "Device Information" (location 2 in the figure below) matches that in the installation directory (location 1 in the figure below). A match indicates a successful update.

