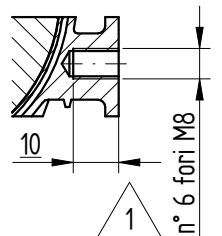
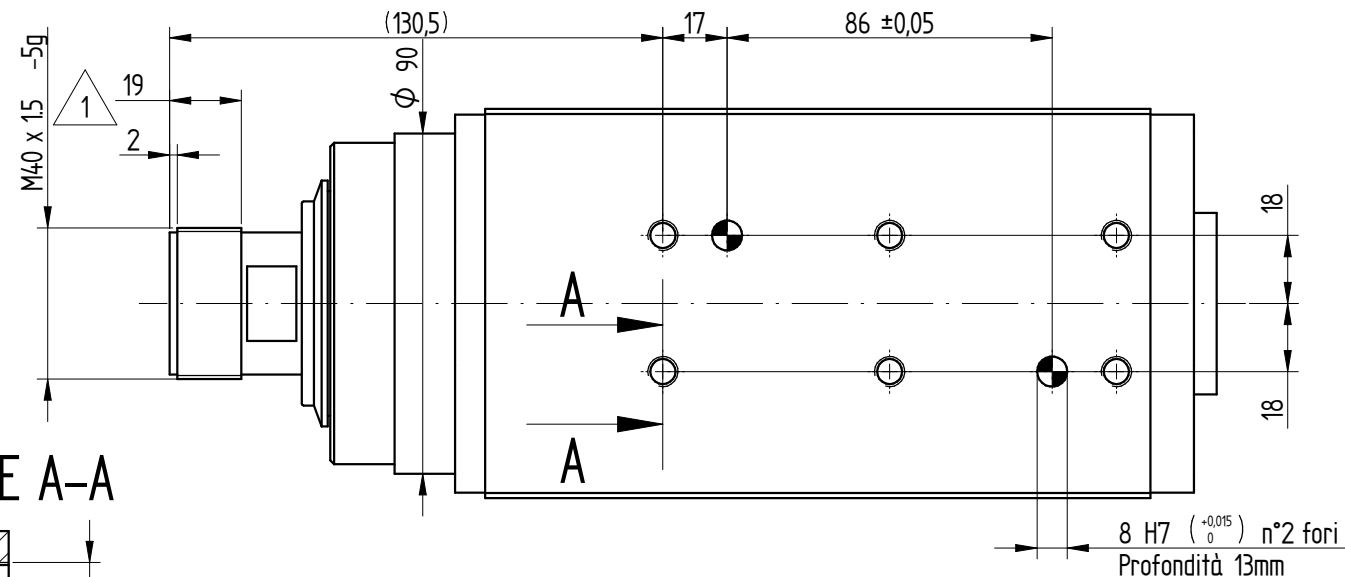
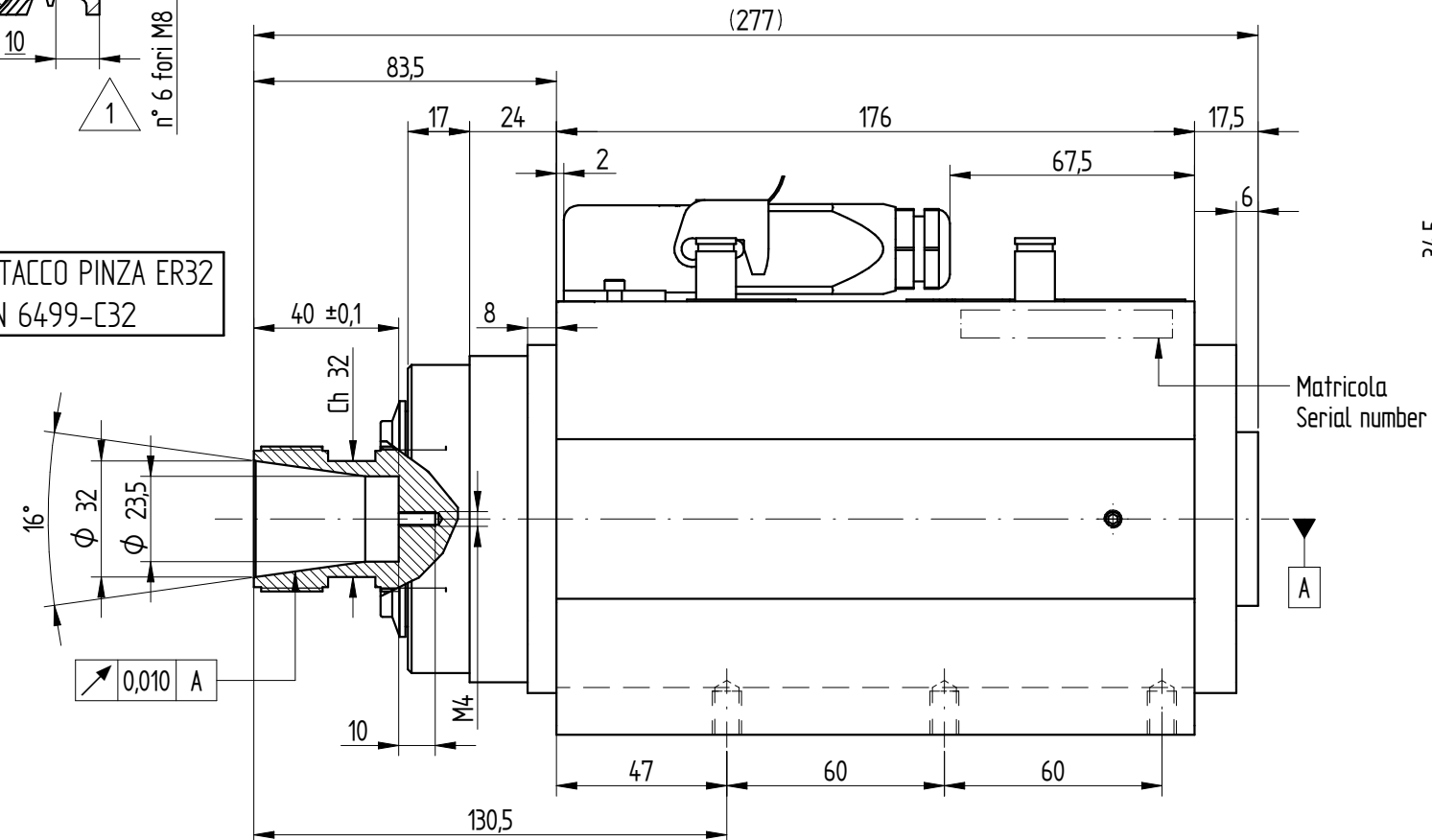


SEZIONE A-A

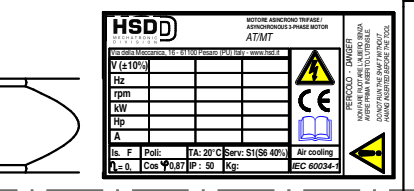
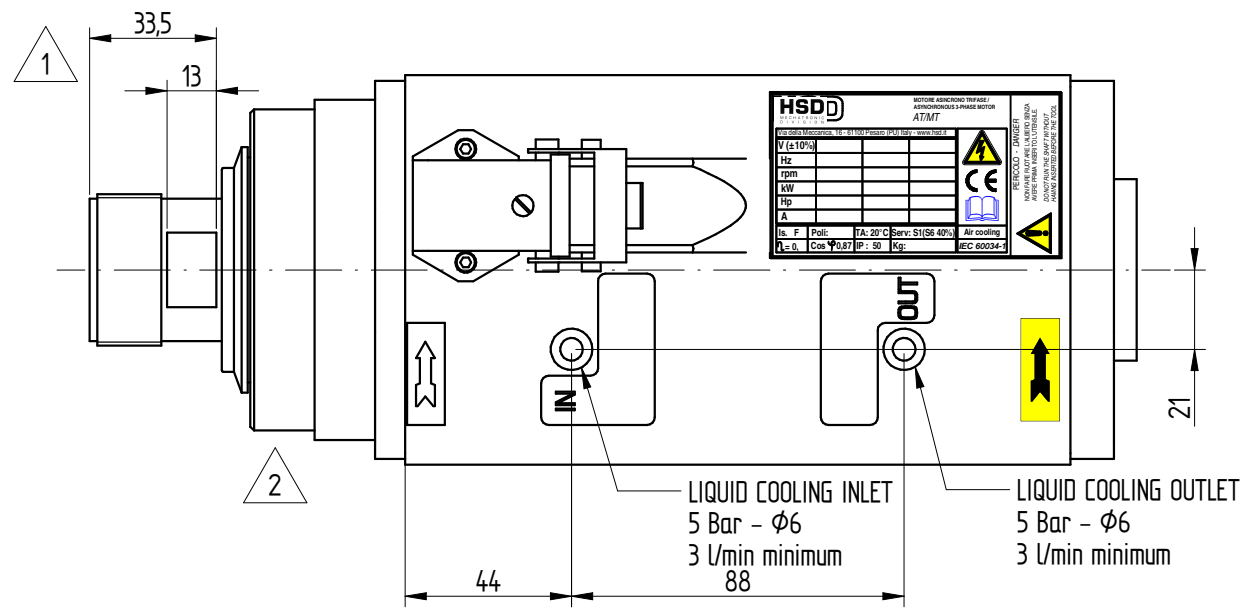


ATTACCO PINZA ER32
DIN 6499-C32



Matricola
Serial number

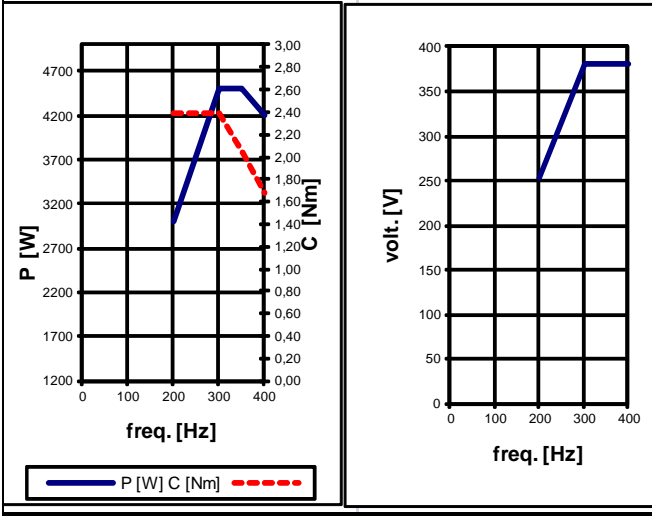
A



LIQUID COOLING INLET
5 Bar - φ6
3 l/min minimum
88

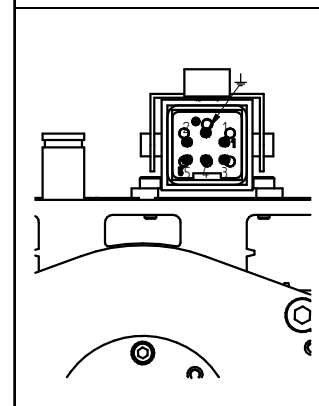
LIQUID COOLING OUTLET
5 Bar - φ6
3 l/min minimum

DATI MOTORE E CURVE CARATTERISTICHE / PERFORMANCES AND MOTOR RATINGS



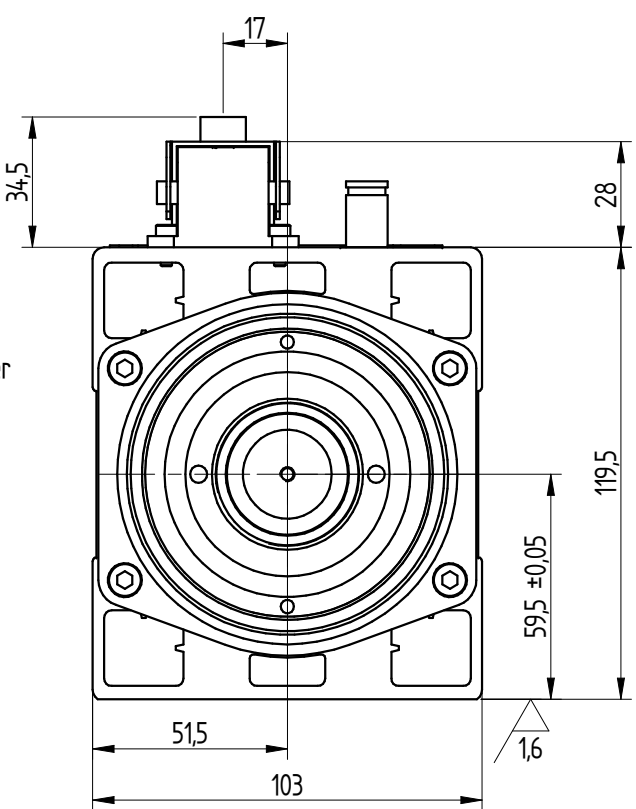
Tensione / Voltage	V ±10%	380	380	380
Potenza resa / Output Power	kW	4,5 (5,4)	4,5 (5,4)	4,2 (5)
Corrente nom. / Current	A	9,7 (11,6)	9,7 (11,6)	9 (10)
Frequenza / Frequency	Hz	300	350	400
rpm	rpm	18000	21000	24000
Coppia nom. / Torque	Nm	2,39 (2,86)	2,05 (2,46)	1,67 (1,99)
Cuscinetto Ant. / Front Bearing		ceramici	ceramici	ceramici
Cuscinetto Post. / Post. Bearing		radiale	radiale	radiale
Rendimento / Efficiency	η	0,82		
Fattore di potenza / Power factor	cos φ	0,86		
Numero di poli / Poles		2		
Tipo di servizio / Service type		S1 (S6 40%)		
Classe di isolam. / Insulation class		F		
Raffreddamento / Cooling		Liquido / Liquid		
Peso / Weight	Kg	10		
Grado IP / Type of Protection	IP	50		

CONNESSIONI ELETTRICHE / ELECTRIC CONNECTIONS



Nr. Pin	Descrizione / Description
1	U Fase / Motor phase
2	V Fase / Motor phase
3	W Fase / Motor phase
4	** Bimetallo / Bi-metallic
5	** Bimetallo / Bi-metallic
	Terra elettromandrino / Earth connection

** Vedi "Manuale istruzioni ed avvertenze per l'uso" per le caratteristiche tecniche
** See "User's guide" for technical informations



RIPRODUZIONE E/O DIFFUSIONE VIETATA REPRODUCTION AND OR DISCLOSURE OF THE DRAWING IS FORBIDDEN	1	Inserite quote mancanti	1	5/5/2016	L.B.	
	2	Eliminata l'indicazione pressurizzazione opzionale.	2	6/6/2016	L.B.	
REV.	DESCRIZIONE REVISIONE / REVISION DESCRIPTION		N°REV	DATA / DATE	FIRMA / SIGN	
DATA DATE	19/01/2016	19/01/2016				
FIRMA SIGN	Bernabucci L.	Bugari M.				SCALA / SCALE: 1:2 FOGLIO / SHEET: 1/1
DATA DATE	19/01/2016	19/01/2016				QUOTE SENZA INDICAZIONE DI TOLLERANZA POSITIONS WITHOUT TOLERANCE INFORMATION - LAVORAZIONI MECCANICHE / MECHANICAL WORKINGS:
MATERIALE / MATERIAL:						- SALDOCARPENTERIE / WELDMENT:
TRATTAMENTO TERMICO / HEAT TREATMENT:						- GETTI / MELT CASTING:
RIVESTIMENTO SUPERFICIALE / SURFACE TREATMENT:						CICLO DI VERNICIATURA / PAINTING CYCLE:
DENOMINAZIONE / DESCRIPTION:	ELETTROMANDRINO MT1090-LIQ-100-ER32-380V-DX-24000-4,5 S1					CODICE A DISEGNO / DRAWING N°: 6162H0124 REVISIONE / REVISION: 2