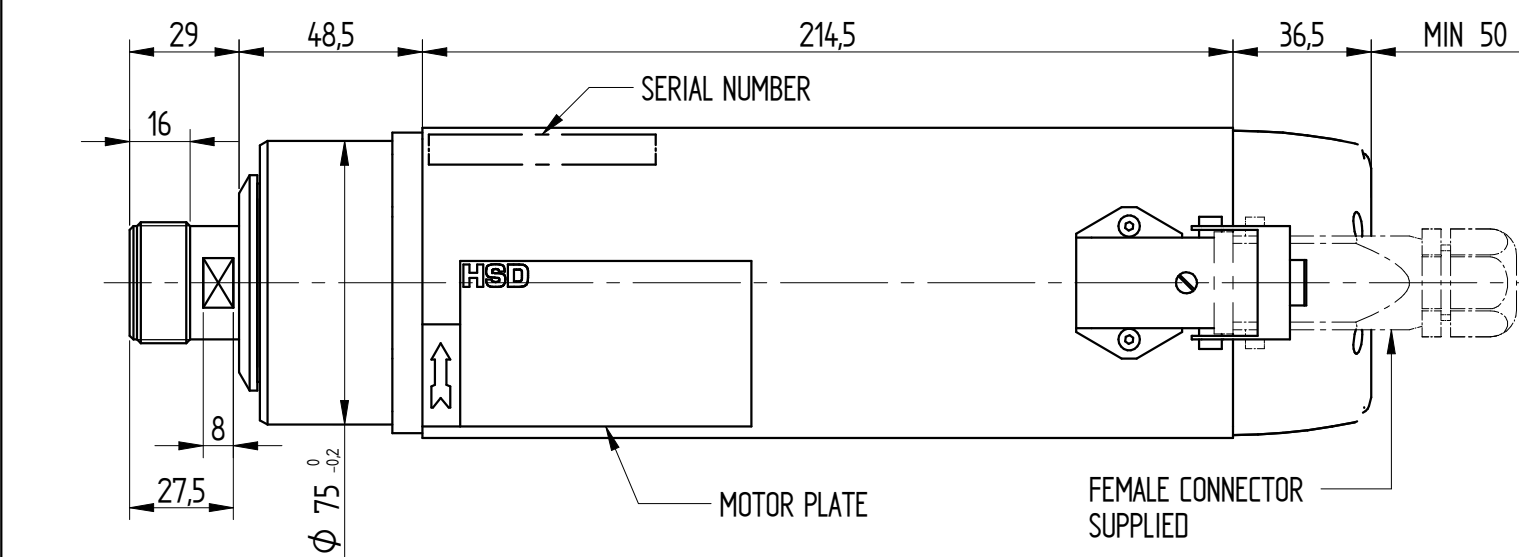
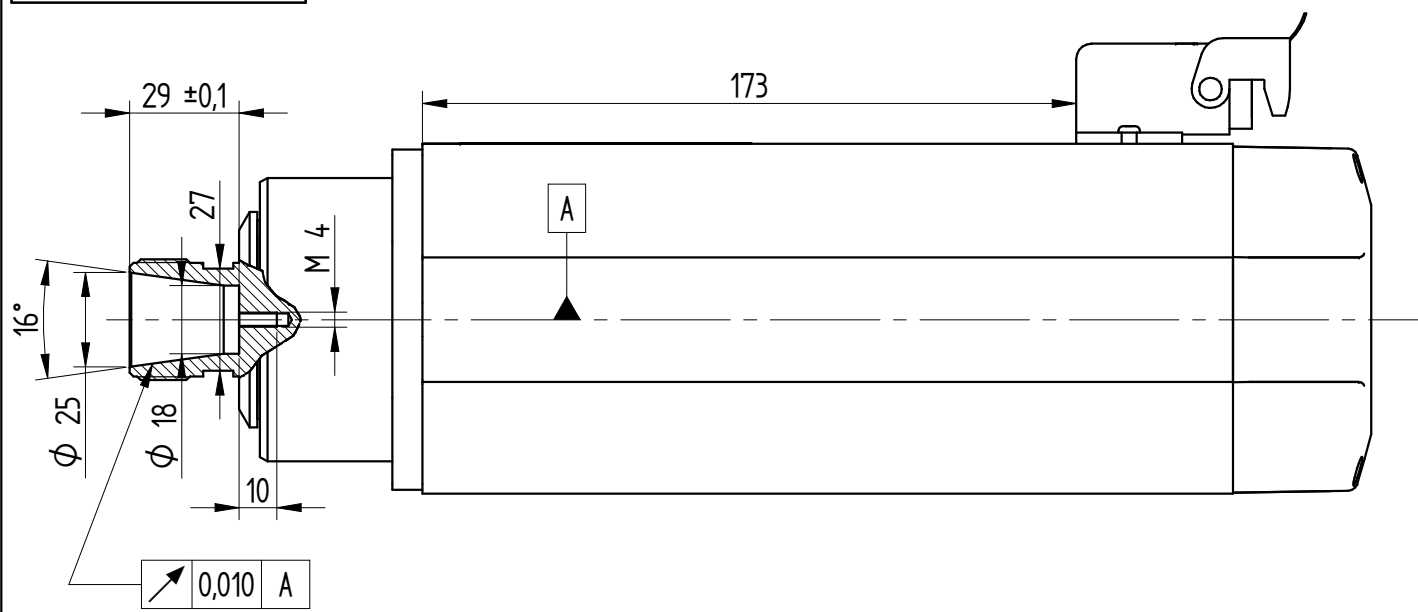
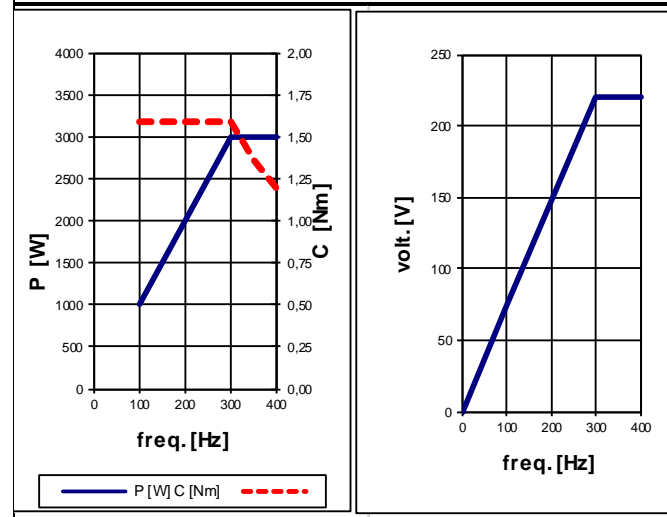


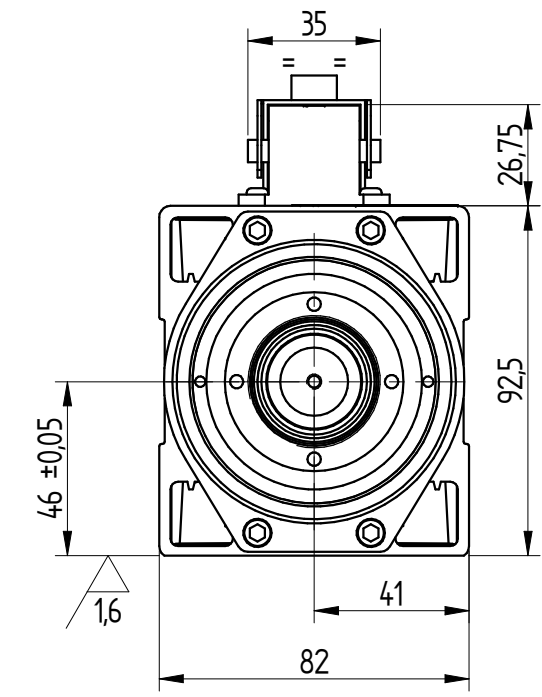
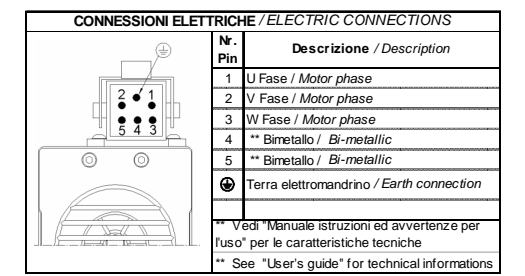
ATTACCO PINZA ER25  
DIN 6499



DATI MOTORE E CURVE CARATTERISTICHE / PERFORMANCES AND MOTOR RATINGS



Tensione / Voltage	V ±10%	220	220
Potenza resa / Output Power	kW	3 (3,6)	3 (3,6)
Corrente nom. / Current	A	12,5 (15)	12 (12,4)
Frequenza / Frequency	Hz	300	400
rpm	rpm	18000	24000
Coppia nom. / Torque	Nm	1,6 (1,9)	1,2 (1,4)
Cuscinetto Ant. / Front Bearing		ceramici	
Cuscinetto Post. / Post. Bearing		radiale	
Rendimento / Efficiency	η	0,75	
Fattore di potenza / Power factor	cos φ	0,77	
Numero di poli / Poles		2	
Tipo di servizio / Service type		S1 (S6 40%)	
Classe di isolam. / Insulation class		F	
Raffreddamento / Cooling		Aria forzata	
Peso / Weight	Kg	8	
Grado IP / Type of Protection	IP	50	



P0	Prima emissione prototipale / First prototype emission			17/10/2018	<b>HSD</b>	
0	First Production submission			03/12/2018		
REV.	DESCRIZIONE REVISIONE / REVISION DESCRIPTION	N°	N° CR	DATA / DATE	FIRMA / SIGN:	M. Bugari
					STATO / STATUS:	Production
					SCALA / SCALE:	1:2
					FOLGIO / SHEET:	1 / 1
DATA DATE	03/10/2018	17/10/2018	03/12/2018	PESO / WEIGHT: 8,453 kg		
FIRMA SIGN	M. Bugari	M. Bugari	G. Grosso	GREZZO DA / RAW BY:		
				COD. GREZZO / RAW CODE:		
MATERIALE / MATERIAL:						
TRATTAMENTO TERMICO / HEAT TREATMENT:						
RIVESTIMENTO SUPERFICIALE / SURFACE TREATMENT:						
DENOMINAZIONE / DESCRIPTION:						
ELETTROMANDRINO MT1073-120-ER25-220V-DX-18/24000-3KW S1-AL						
CICLO DI VERNICIATURA / PAINTING CYCLE:						0
CODICE CODE						H6162H0164
REVISIONE REVISION						0

RIPRODUZIONE E/O DIFFUSIONE VIETATA  
REPRODUCTION AND/OR DISCLOSURE OF THE  
DRAWING IS FORBIDDEN