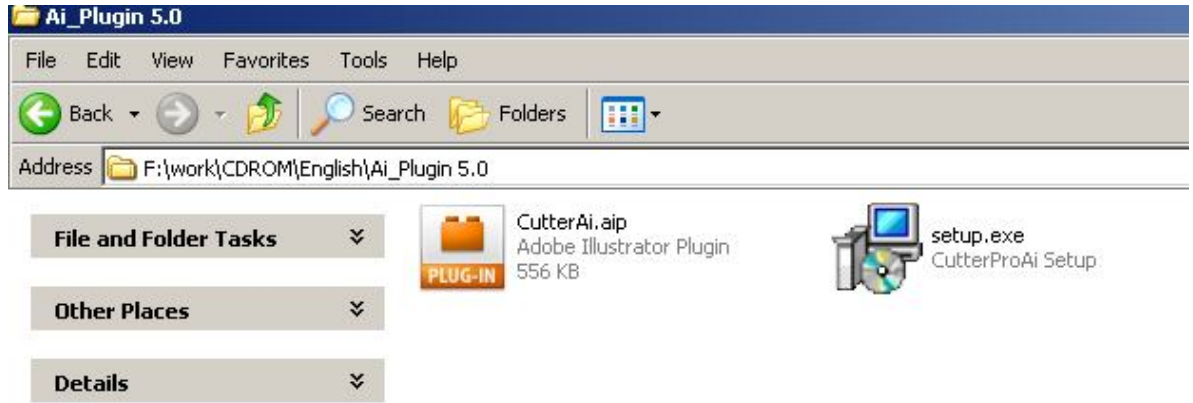


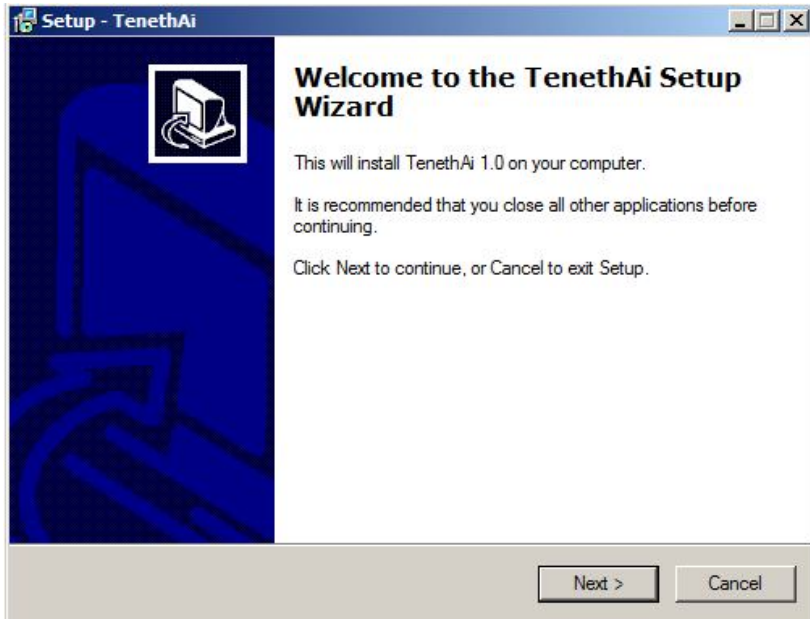
- 一. Note: This plug-in only supports CS4 and above, CS4, the following versions are not compatible
- 二. Installation method
- 1. found out the files as follows:



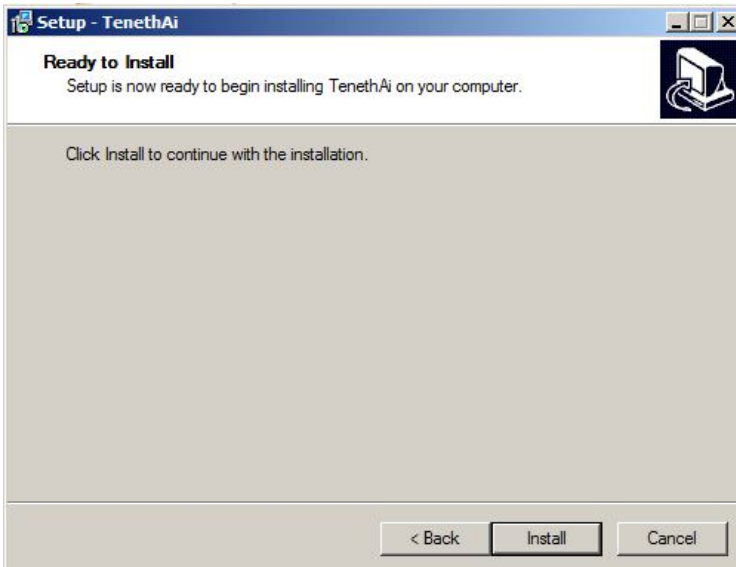
copy shown as above file "CutterAi.aip" to the "plug-ins" folder of the installation directory of the AI inside, such as: E:\Program Files\Adobe\Adobe Illustrator CS4\Plug-ins, double click "setup.exe"



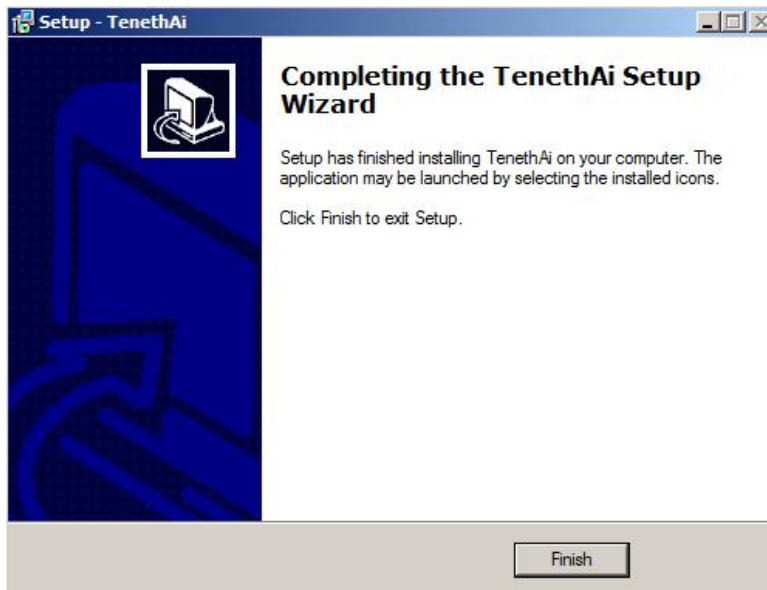
Then it will display a box below the image.



click "next"



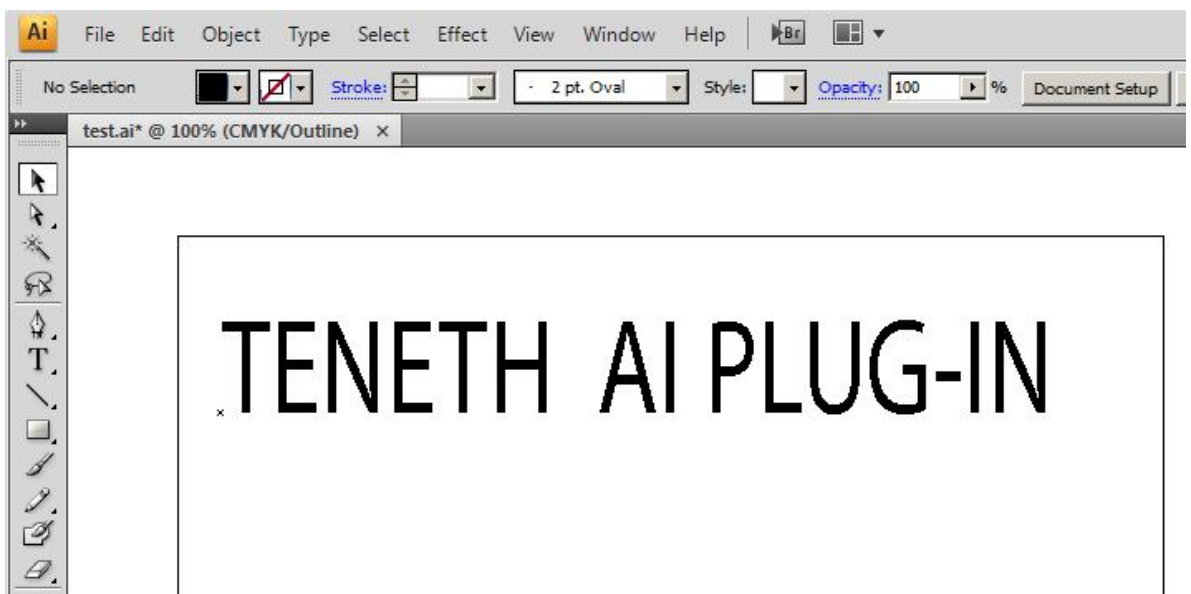
click "install"



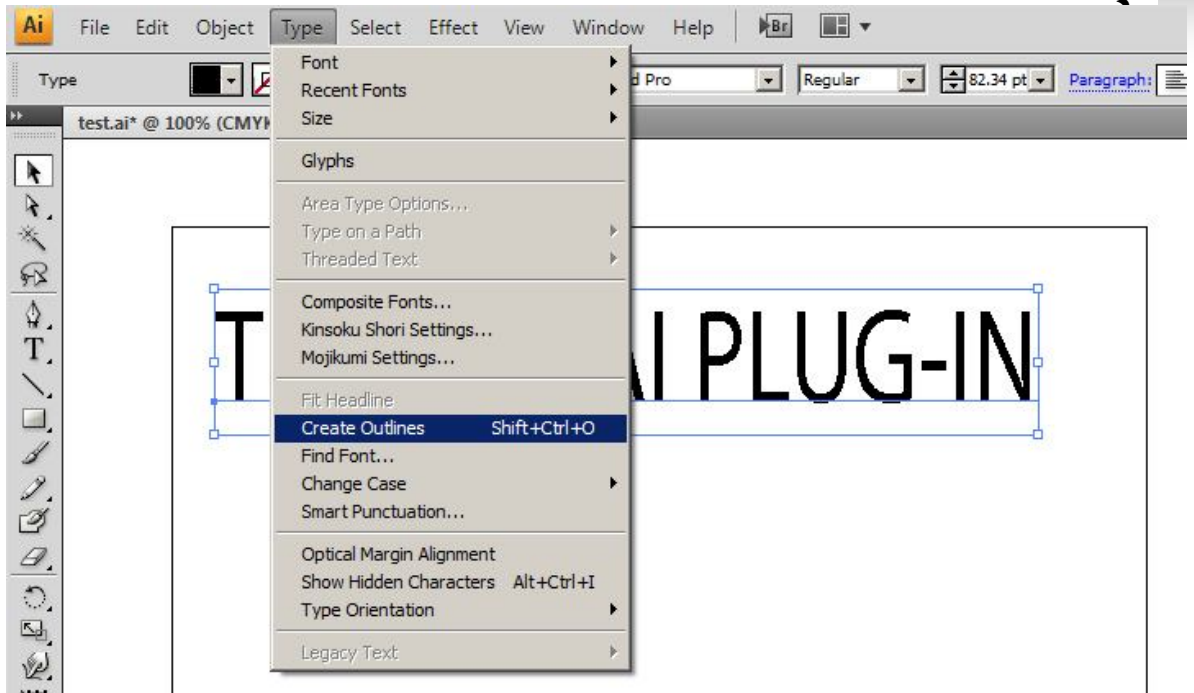
click “finish”

### ≡. How to use

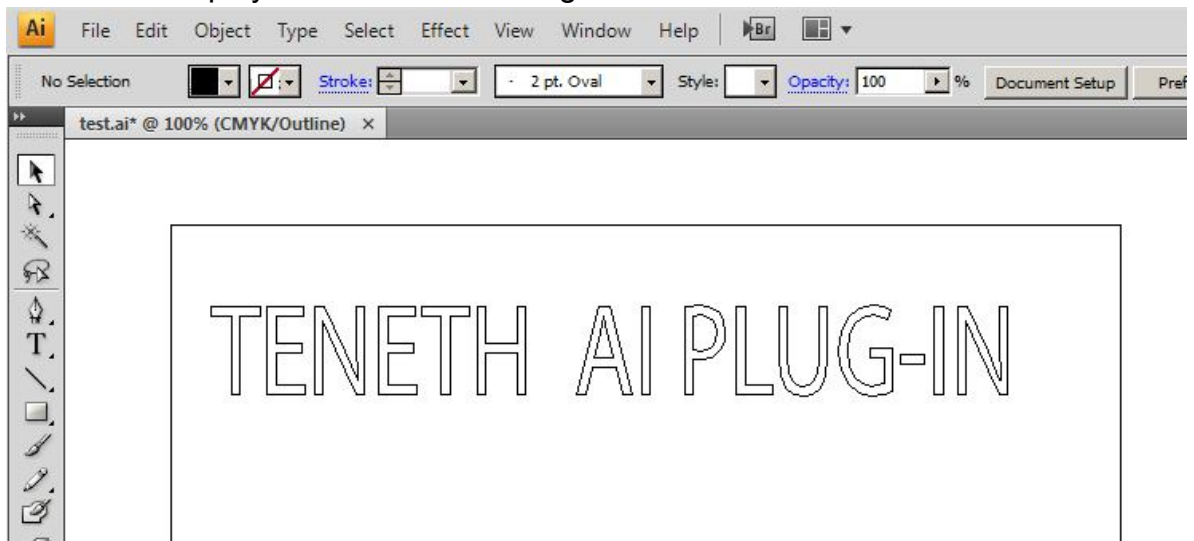
1. Select the Image to output



2. click “type->Create Outlines”



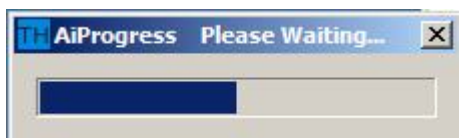
Then it will display a box below the image.



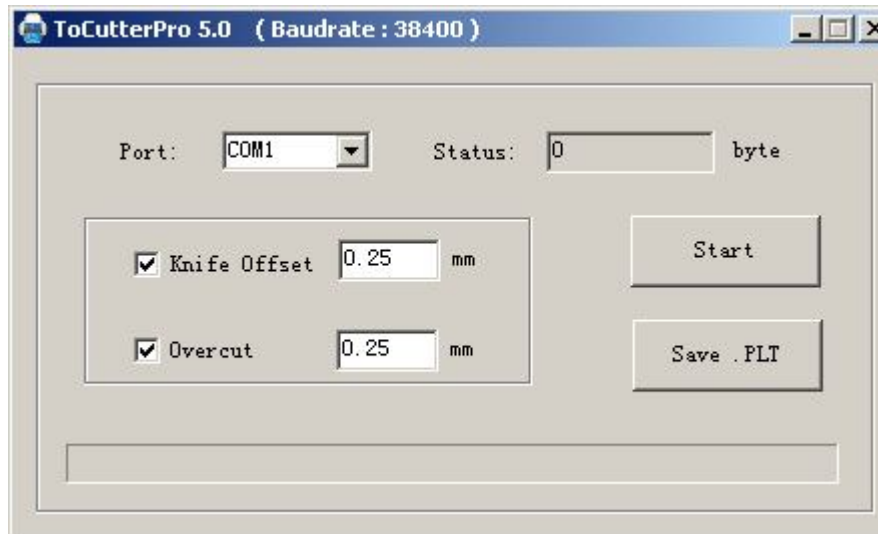
3. click “file->To CutterPro...”



Then it will display a box below the image.:



1. Then it will display a box below the image.



Select the appropriate port and baud rate upon the plotter connected and set the value for the **Sharp Angle** and **Close**.

1. Then click "**Start**" to do the task.
2. Click "Save PLT file "data will be stored on the computer and then copy it t SD card