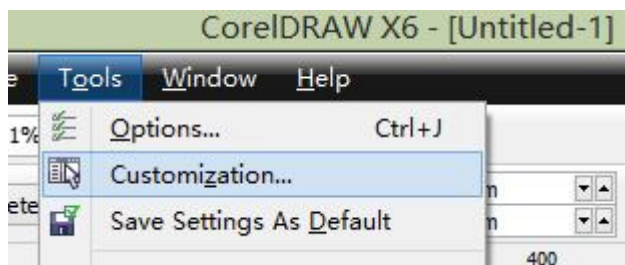
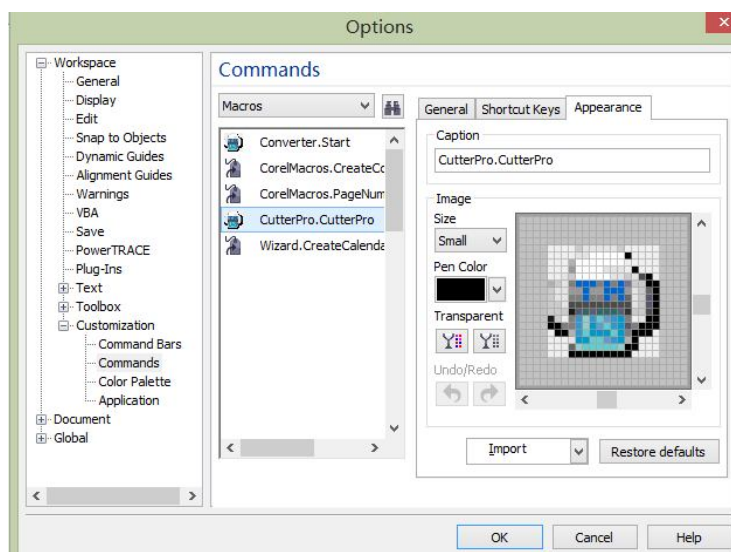


CoreDraw plug-in installation

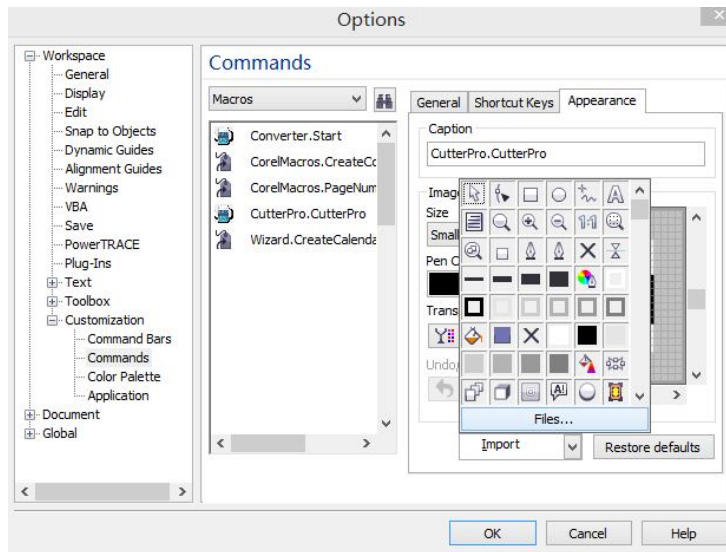
1. copy folder "CutterProCdr" to c:\ (important : not rename this folder)
2. copy file "CutterPro_5.2.gms" to CoreDraw install folder "C:\Program Files (x86)\Corel\CoreIDRAW Graphics Suite X6\Draw\GMS"
3. Open CoreIDRAW then click 'Tools' "**Customization...**" ->



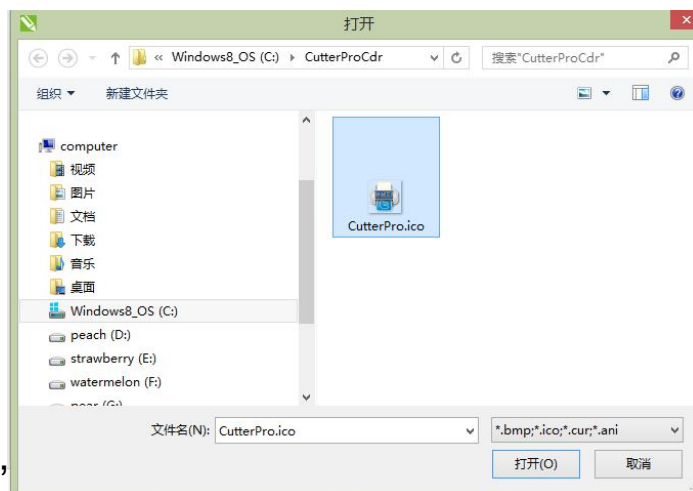
Then click "**Commands**"-> "**Macros**" -> "**CutterPro.CutterPro**" as follows



it will display the following dialog box, click
“Appearance”>“Import”>“Files”

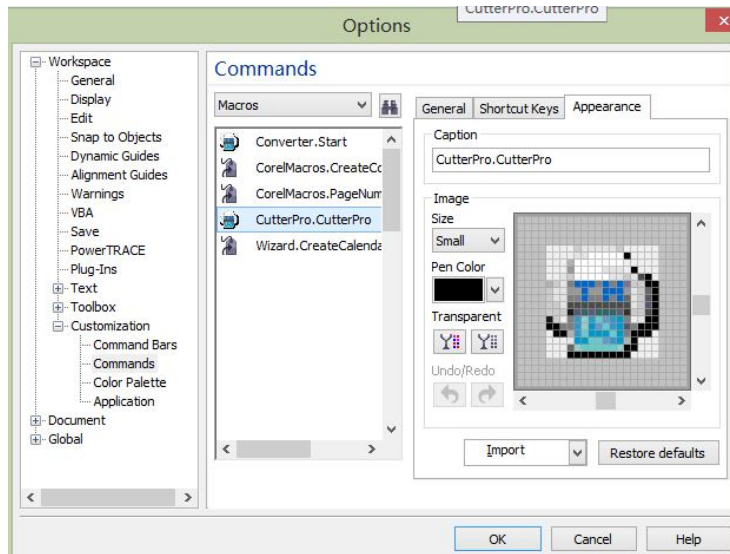


it will display the following windows, then double



click "cutterpro.ico"

Press the left mouse button and drag "cutterpro.cutterpor"

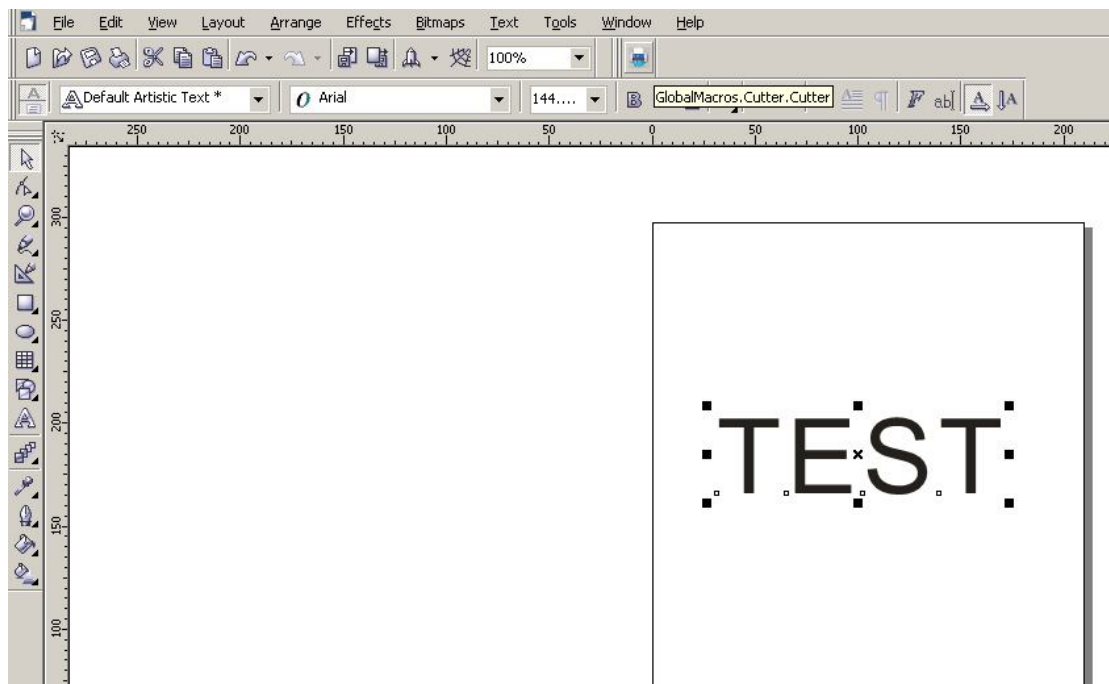


to the toolbar

Click **“OK”**

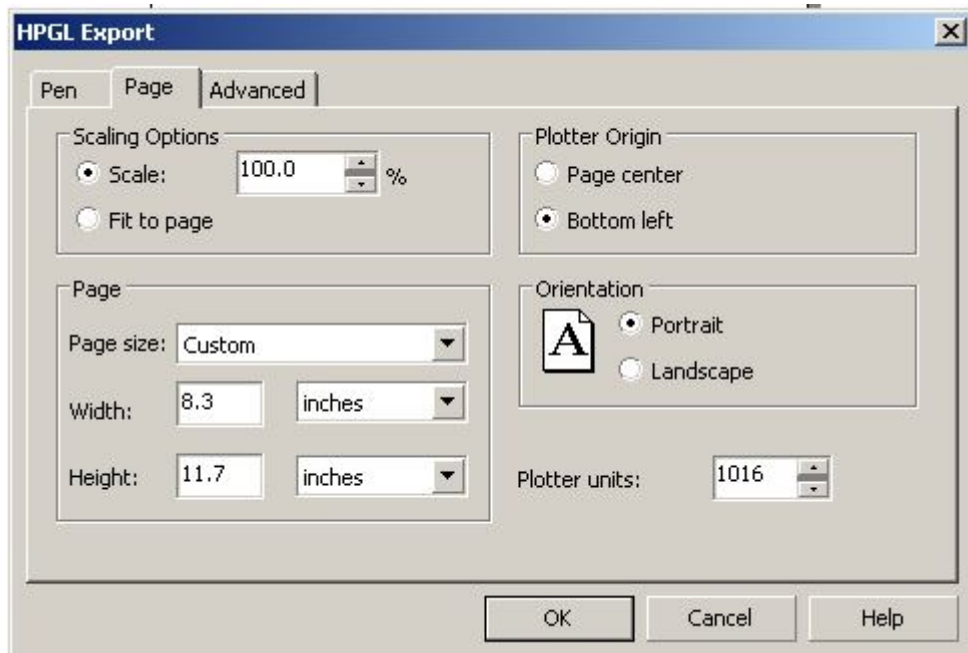
How to use:

Output the Designed file then click

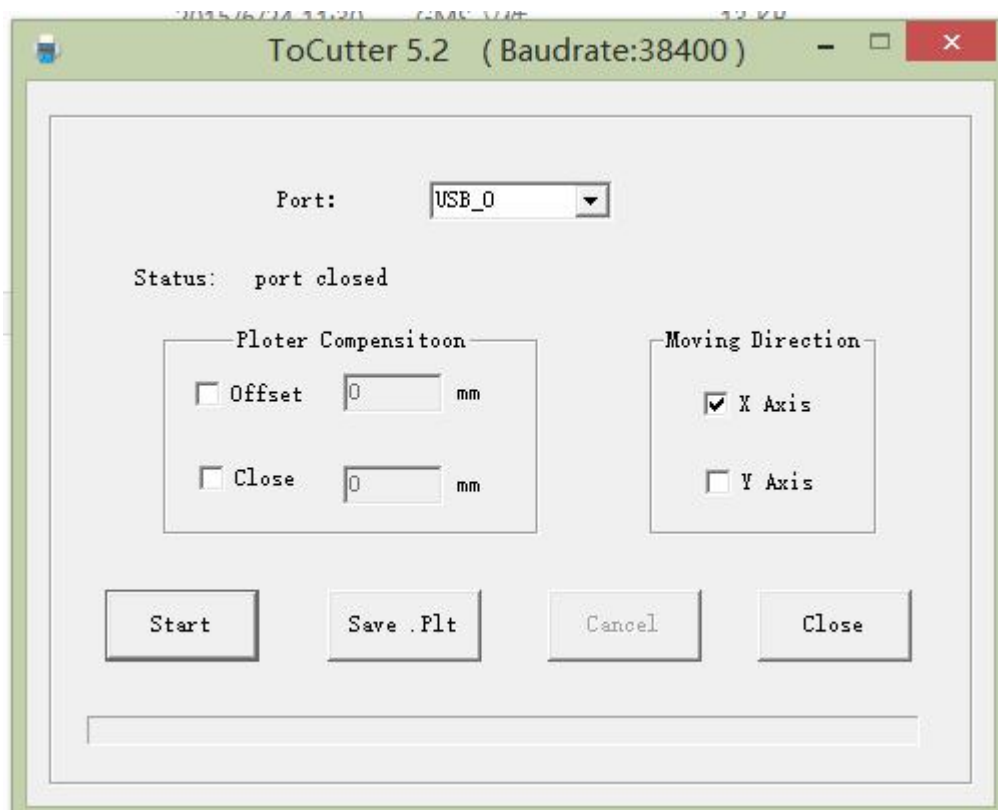


“Plotter Origin” select “Bottom left”

“Plotter units:” select “1016”



Click **“OK”**



Select the port connected to the plotter and start.