

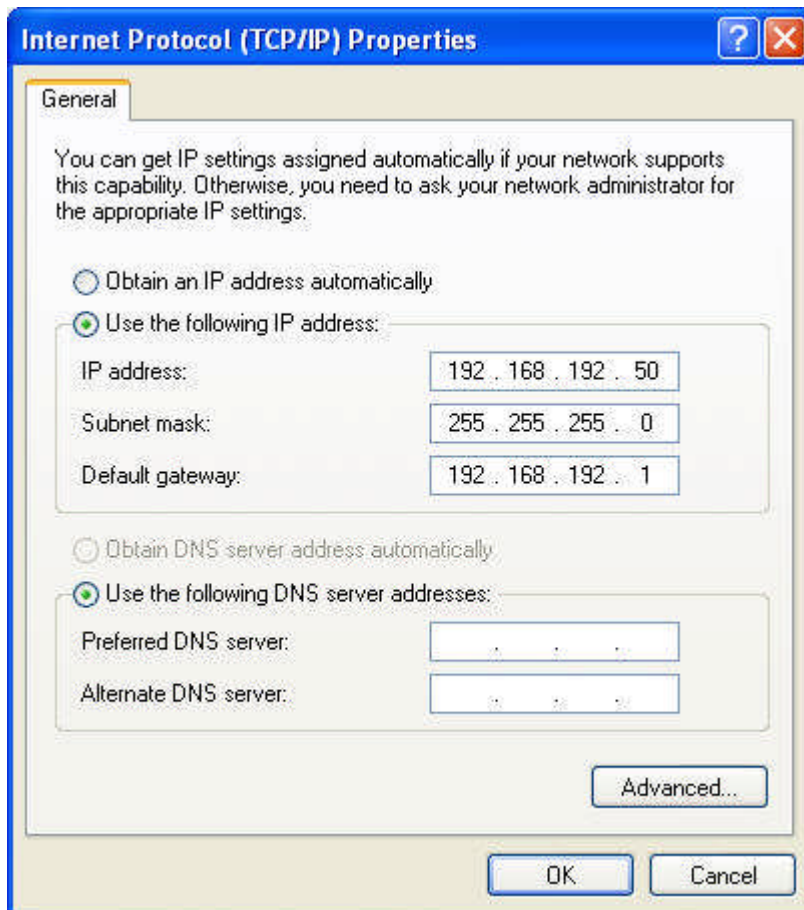
TCP/IP set for MPC6585

June 2014

Below screen shots are based on Win 7 (64-bit).

1. PC connects with MPC6585 via normal network cable

1.1 Set the PC as static (manual) mode

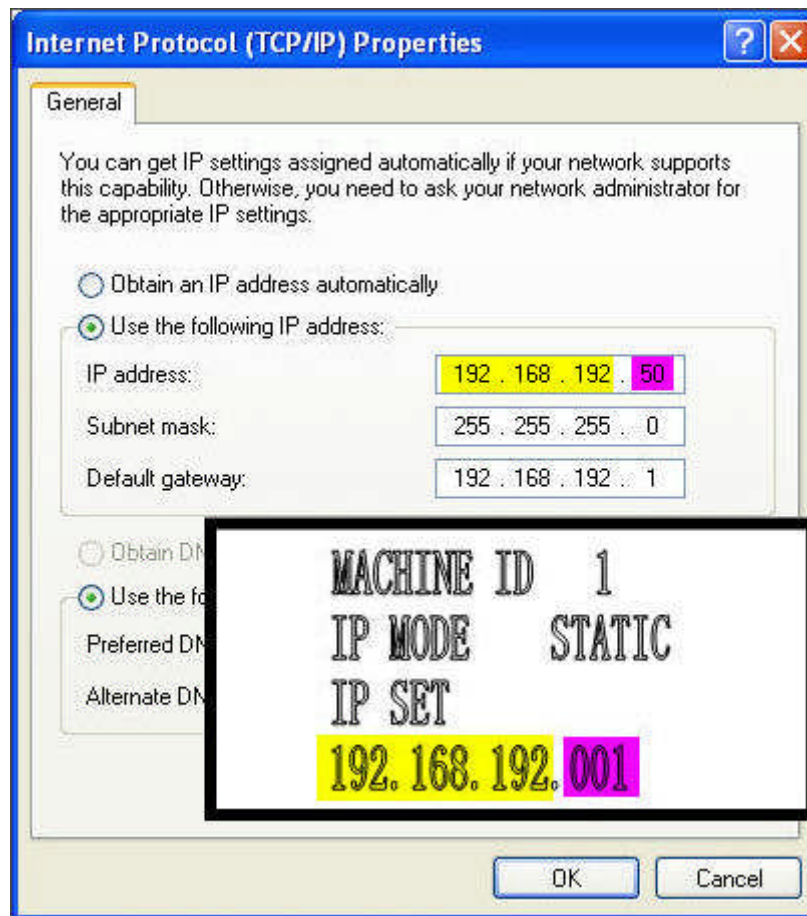


1.2 Set the MPC6585 as static (manual) mode in the panel (i.e. PAD04A-E).

```
MACHINE ID 1
IP MODE    STATIC
IP SET
192.168.192.001
```

Re-power MPC6585 motion controller hardware.

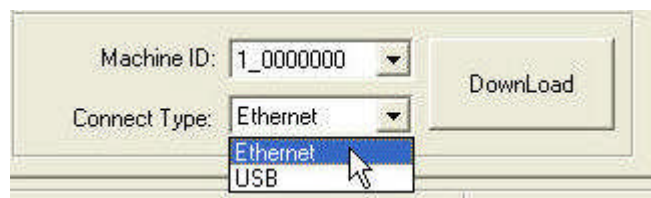
1.3 Requirement of the IP address of the PC and MPC6585



The first three groups of the IP address (yellow covered) in the panel must be identical with the ones in the PC.

The last group of the IP address (purple covered) in the panel allows difference with the one in the PC.

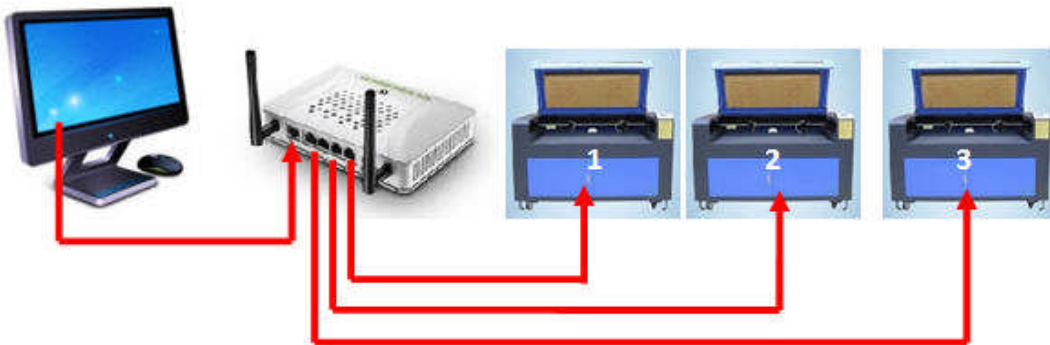
1.4 Select the connect type



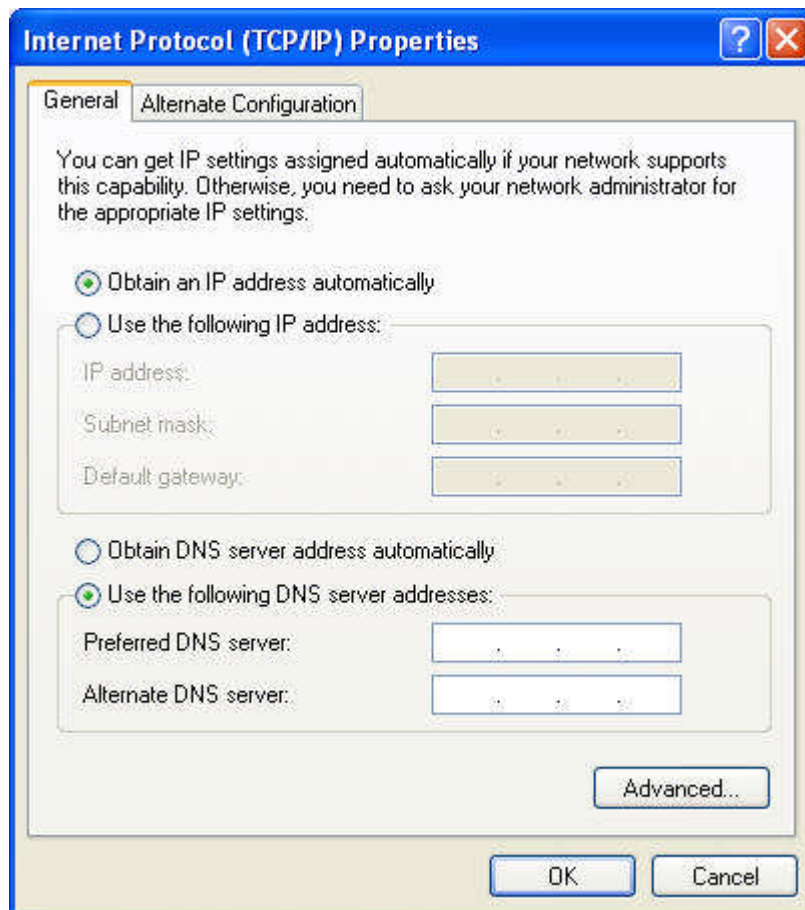
Choose "Ethernet" in the LaserCut61.

2 PC connect with MPC6585 through router

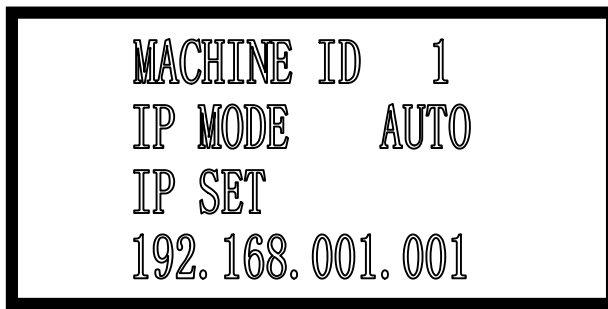
2.1 Diagram



2.2 Set the PC as below



2.3 Set the MPC6585 as AUTO mode in the panel



Re-power MPC6585 motion controller hardware.

2.4 Select the connect type in the LaserCut61.



2.5 Trouble Shooting

The connection between PC and router is either by the “wired” (normal network cable) or by the wireless WAP.

The PC can browse the Internet via a router when a “wired” MPC6585 is connected via the router as well.

User is advised the “wired” because it is more reliable than the WAP.

The disabled WAP will prevent the “wired” MPC6585 from occasionally interference.

