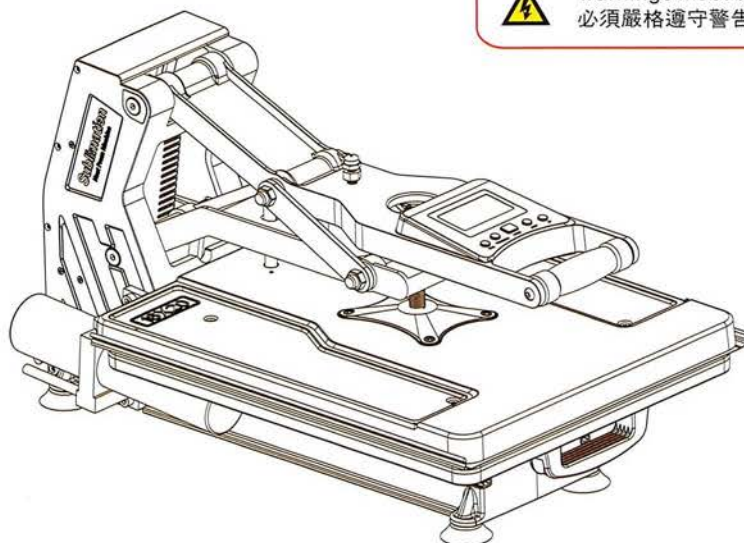


# HEAT PRESS ST-4050

## EN Start Here

## TC 入門指南



warnings must be followed carefully to avoid bodily injury.  
必須嚴格遵守警告事項以免身體受損。

SKU: H-PRESS/4050  
(without Hydraulic)

WhatsApp: 060 600 6000  
Website: am.co.za Email:  
services@am.co.za

### Unpacking 拆裝

Contents may vary by location  
內容可能因為地區而有所不同

Please remove the packing foam carefully and keep well for maintenance.  
請小心移除設備外包裝泡沫。並保存好該包裝材料，以備保維修時使用。



警告

- 1.請使用能負載機器額定功率的電源
- 2.保持設備的通風，遠離易燃物品
- 3.將設備放置在水平平坦的表面
- 4.在儲存、運輸和運行環境中，請注意防水

### ST-4050主要技術參數 Main technical parameters of ST-4050

產品型號 Item no:	ST-4050 (A/B)	機器功率 Power :	1400W
使用電源 Voltage:	230V 50Hz / 110V 60Hz	機器材質 Material :	鎂合金 Magnesium alloy
印制面積 Transfer size:	400X500mm	機器淨重 NW. :	18KG
液壓泵參數 Hydraulic pump:	最大壓力 Max Pressure 700KG	機器毛重 GW. :	23KG
上升速度 Rising velocity:	2mm/s	包裝尺寸 Packing size :	810x520x485mm

## Feature commentary

### 控制面板詳解

-  應急停止開關
-  液壓泵壓力調節
-  進放參數設置
-  數值的增加
-  數值的減少



STOP

Emergency stop switch. Press this button in emergency, up heating board will up. Can be used as a start button when manual operation.



PRESSURE

Adjust hydraulic pump pressure. 0-9% a total of nine levels, adjust the pressure you need.



MODE

Set input button. Press to set temperature. Press again to set time.



TIME

Value plus. Can be used as a leftwards button when choose save parameter setting.



AT

value minus. Can be used as a rightwards button when choose save parameter setting.

1 2 3 4 5 6

Use "+" and "-" to switch the six parameters save settings.

### 1、加工量設置 Processing capacity setting



3s

先长按 "+" 3秒听到蜂鸣一声, "+" 不松开, 再按下 "-", 蜂鸣一声。进入计数设置。松开按键后, 按 "+" "-" 调节加工数量  
Press "+" for three seconds, hear one beep, keep press. Then press "-", after hear one beep, you can set. Release button, press "+" and "-" to set amount.

### 2、總量統計 Gross statistics

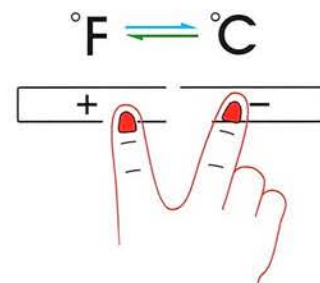


3s

先长按 "-" 3秒听到蜂鸣一声, "-" 不松开, 再按下 "+", 蜂鸣一声。进入从出厂到当前总的数量统计。  
Press "-" for three seconds, hear one beep, keep press. Then press "+", after hear one beep, you can see the gross statistics from factory default to now.

### 组合键功能解说

Function Commentary of Combination Key



注意：同時按住 (+ / -) 鍵可快速實現攝氏度與華氏度之間的轉換。

Attention: Press (+ / -) at the same time, you can switch between °F & °C.

## 開關按鍵的功能解說 Keys function explanation



STOP

急停開關鍵  
緊急情況下按下該鍵機器上發熱板會上升。  
手動時可以做為開始鍵使用



PRESSURE

液壓泵壓力調節  
0-9%共9個擋位  
調節你需要的壓力大小



MODE

設置進入鍵  
按一下溫度設置  
再按時間設置



TIME

數值的增加  
在選擇儲存參數時  
可以做為向左鍵使用



AT

數值的減少  
在選擇儲存參數時  
可以做為向右鍵使用

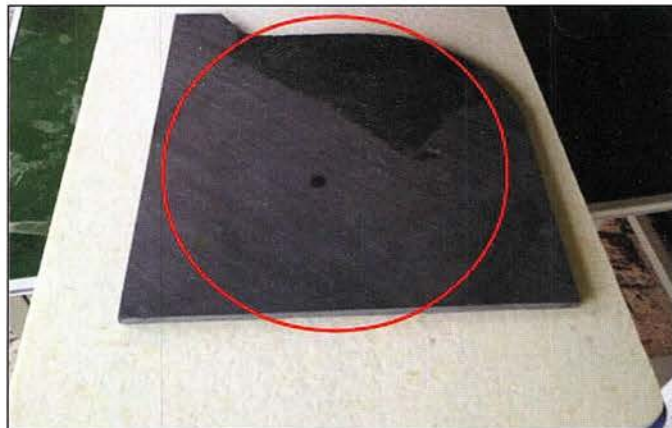
1 2 3 4 5 6

6組設置參數的儲存  
可以使用+和-號  
來快速調取

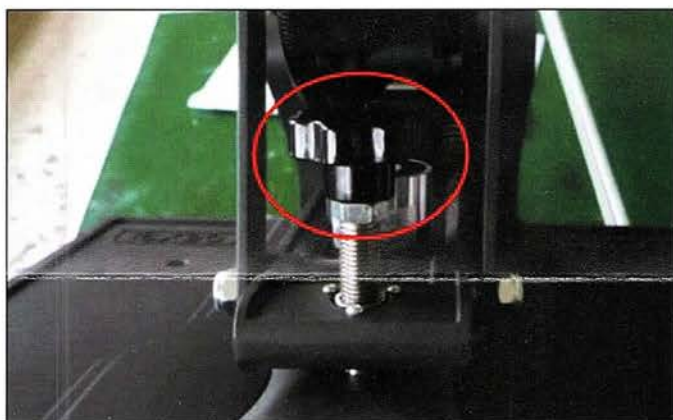
## 壓力調節解說 Pressure regulation explanation



1. 設置壓力為0檔  
Set the pressure 0 level.



2. 把需要做的產品放好  
Put the product on the flatbed



3. 調整壓力螺桿到能用手輕鬆壓下為準，按紅色按鍵會彈起為準。  
Adjust the pressure screw to be able to easily press, the screw will be pop up when press the red button.



4. 如圖所示，調到6檔，手柄壓下後，按急停開關（STOP按鍵），手柄彈起就可以了。

As show in the picture, move to 6th level, handle down, press the emergency stop switch (STOP button), the handle will be able to pop up.

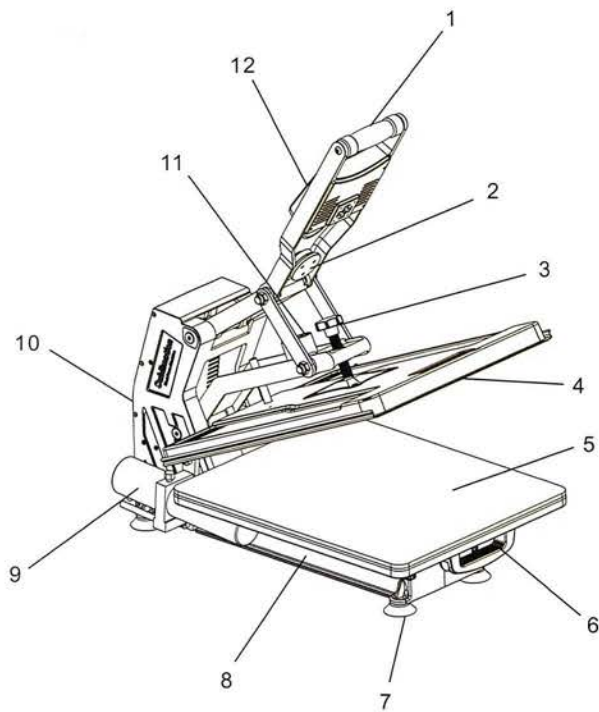


需要注意1:  
如果轉印水晶或者石畫的時候建議壓力檔位用5檔，以免把產品壓裂。

Note 1: Adjust the 5th level when sublimation crystal and rock photo ,advoid product fracturing.

Accessory Name Graphic  
配件名稱圖解

- |         |                         |
|---------|-------------------------|
| 1、手柄    | 1. Handle               |
| 2、吸盘    | 2. Suction cup          |
| 3、升降调节杆 | 3. Lifting lever        |
| 4、上发热盘  | 4. Up heating board     |
| 5、硅胶垫   | 5. Silicone pad         |
| 6、推拉手柄  | 6. Pull and push handle |
| 7、吸盘    | 7. Suction foot         |
| 8、导轨    | 8. Slide guide          |
| 9、液压泵   | 9. Hydraulic pump       |
| 10、手盖板  | 10. Hand cover          |
| 11、电磁吸铁 | 11. Electromagnet       |
| 12、电路板  | 12. Circuit board       |



Circuit Board Wiring Method  
电路板接线示意图

ST-4050A WIRING METHOD

1. 火线输入
2. 发热板火线 (220V接A)
3. 发热板火线 (110V接A和B)
4. 零线输入
5. 发热板零线
6. 温度探头端子
7. 显示板端子
8. 限位开关端子
9. 散热风扇端子
10. 电磁铁输出
11. 12VDC 电源输入
12. 液壓電機輸出

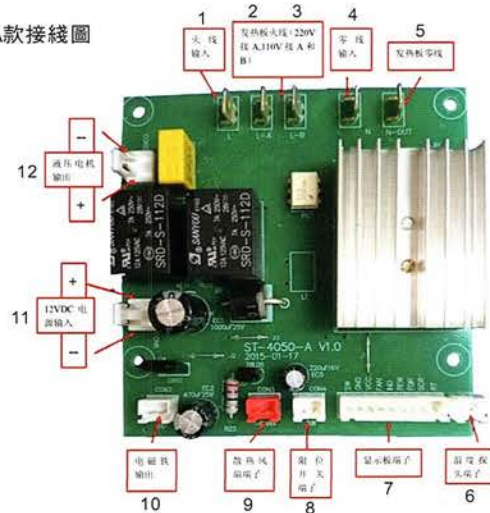
1. live wire input
2. heating board live wire( 220v connect A)
3. heating board live wire( 110v connect A and B)
4. neutral wire input
5. heating board neutral wire
6. temperature detector terminal
7. display panel terminal
8. limit switch terminal
9. cooling fan terminal
10. electromagnet output
11. 12VDC power input
12. Hydraulic motor output

ST-4050B WIRING METHOD

1. 火线输入
2. 发热板火线 (220V接A)
3. 发热板火线 (110V接A和B)
4. 零线输入
5. 发热板零线
6. 温度探头端子
7. 显示板端子
8. 限位开关端子
9. 散热风扇端子
10. 半波整流器输出 (电磁铁)

1. live wire input
2. heating board live wire( 220v connect A)
3. heating board live wire( 110v connect A and B)
4. neutral wire input
5. heating board neutral wire
6. temperature detector terminal
7. display panel terminal
8. limit switch terminal
9. cooling fan terminal
10. Half-wave rectifier output (electromagnet)

ST-4050A款接线图



ST-4050B款接线图

