

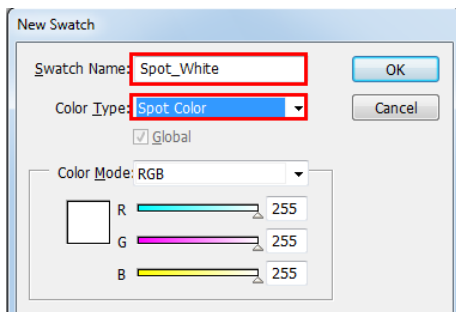
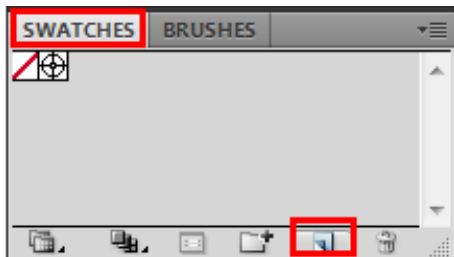


- 1 Open the Illustrator and load the image.



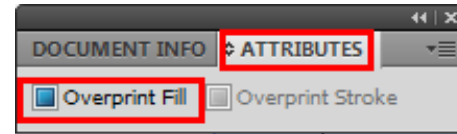
Tips: Create some texts or objects that you want to fill with the spot white.

- 2 Add a new color swatch.



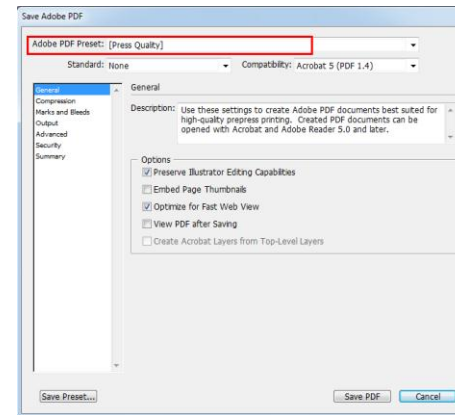
Tips: Set the new color name is Spot_White and the Color Type is Spot Color

- 3 Fill Objects with Spot White Swatch and overprint.



- 4 Save as PDF or EPS format.

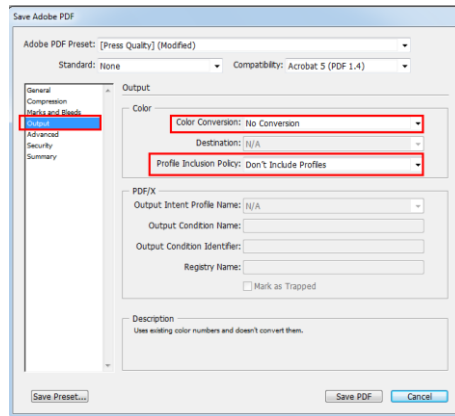
(1) Save as PDF format



Tips: Set the Adobe PDF Preset is Press Quality.

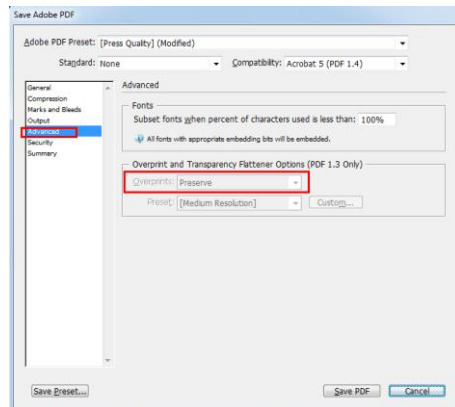


PhotoPRINT: Made spot white in Illustrator



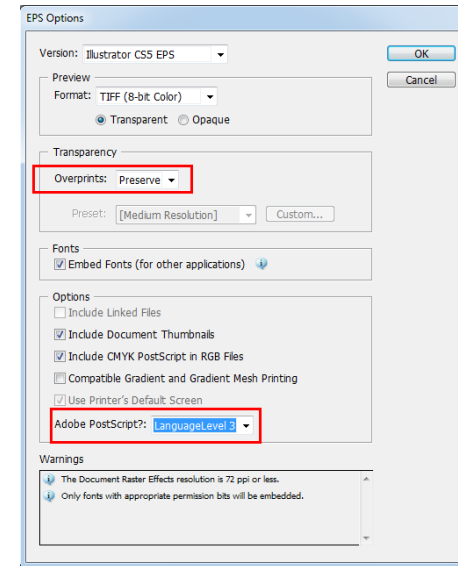
Tips: Set Color conversion is no conversion.

Set profile inclusion policy is don't include profiles.



Tips: Preserve the overprints.

(2) Save as EPS format.



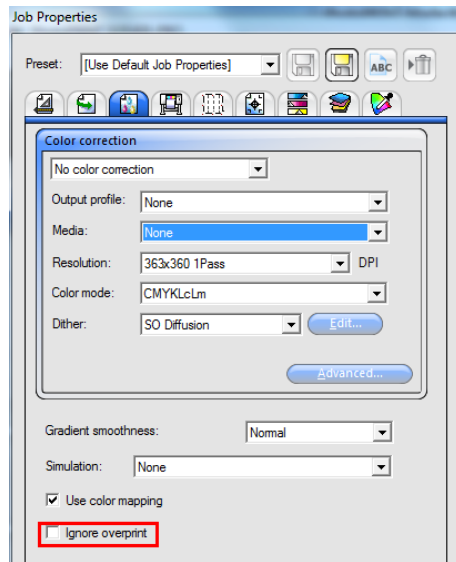
Tips: Preserve the overprints

Select the PostScrip Level 3

- 5 Add the PDF or EPS file to PhotoPRINT.
- 6 Set “Job properties-Color Management”



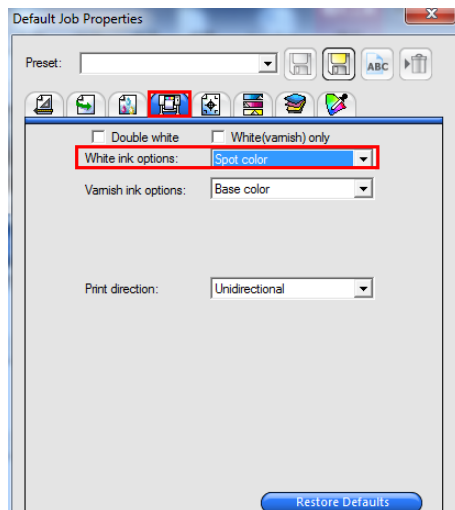
PhotoPRINT: Made spot white in Illustrator



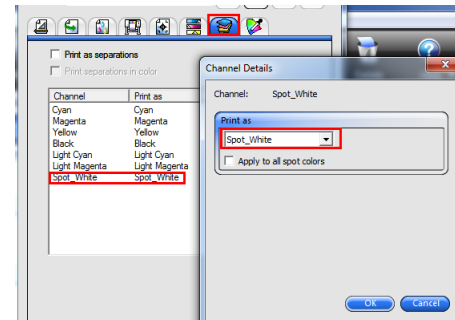
Tips: Let the ignore overprint unchecked.

7 Set "Job properties-Printer options"

Set the White options as spot color.



8 Set "Job properties-Separations"



Set the spot channel print as spot white.

Tip: Double click the channel can appear the dialog.