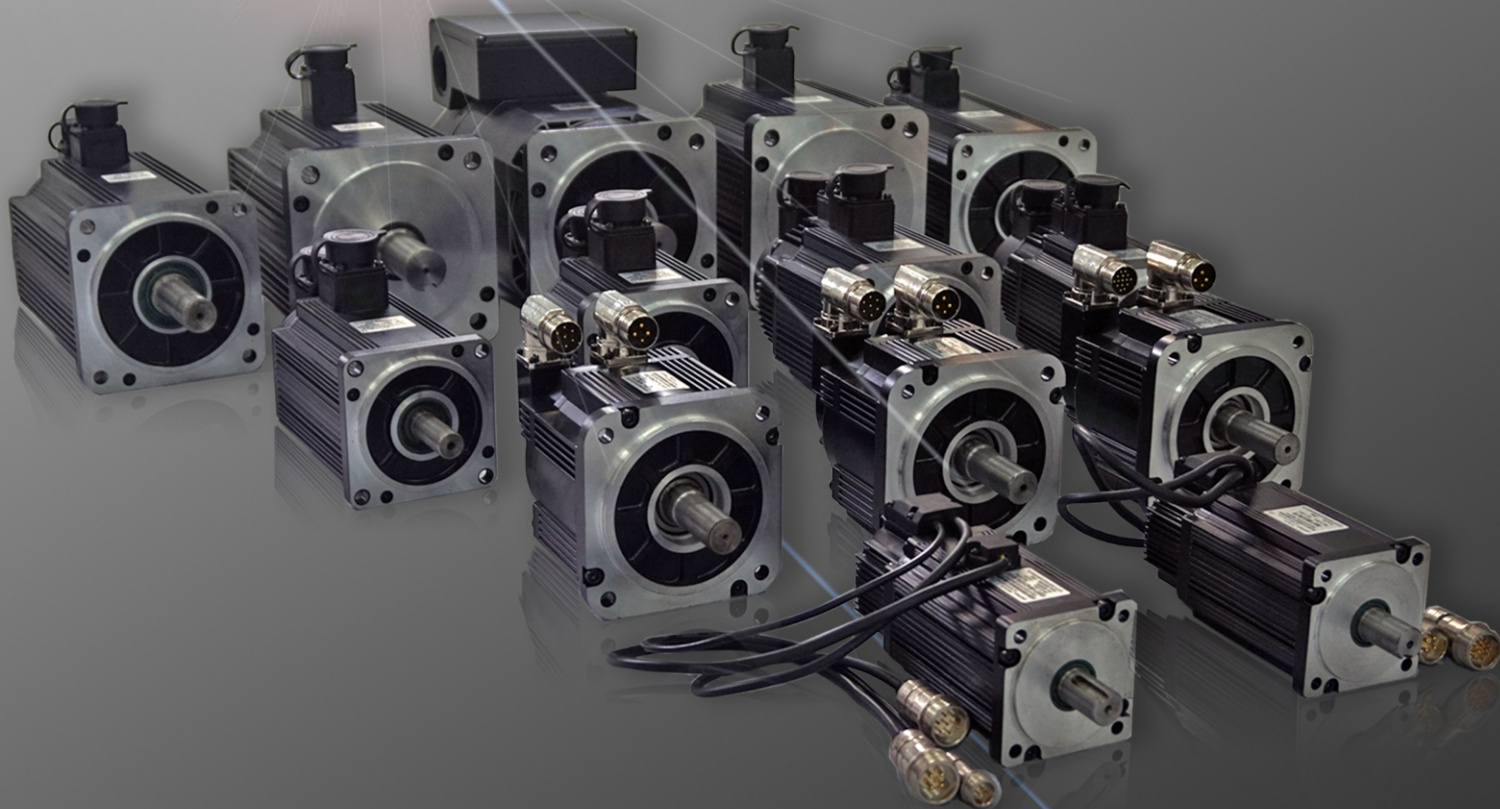


HXDWH

产品目录——

ST系列伺服电机
CTD系列车削电主轴



华大电机

ISO9001 : 2008



M01301202

LB伺服电机

LB SERVO MOTORS

机座号 (mm) : 110、130、150
 FRAME SIZE
 额定转矩 (Nm) : 2.0~27
 RATED TORQUE
 额定功率 (Kw) : 0.6~5.5
 RATED POWER
 额定转速 (rpm) : 1500、2000、2500、3000
 RATED SPEED
 最高转速 (rpm) : /
 MAXIMUM SPEED
 极对数 : 4
 POLES
 转子惯量 : 中惯量
 ROTOR INERTIA
 反馈元件 : 可选
 FEEDBACK
 失电制动器 : 可配
 POWER-OFF BRAKE
 适配驱动器工作电压 (VAC) : 220
 MATCHED DRIVER WORKING VOLTAGE CODE

HB伺服电机

HB SERVO MOTORS

机座号 (mm) : 110、130、150、180
 FRAME SIZE
 额定转矩 (Nm) : 2.0~55.0
 RATED TORQUE
 额定功率 (Kw) : 0.6~8.6
 RATED POWER
 额定转速 (rpm) : 1500、2000、2500、3000
 RATED SPEED
 最高转速 (rpm) : /
 MAX SPEED
 极对数 : 4
 POLES
 转子惯量 : 中惯量
 ROTOR INERTIA
 反馈元件 : 可选
 FEEDBACK
 失电制动器 : 可配
 POWER-OFF BRAKE
 适配驱动器工作电压 (VAC) : 380
 MATCHED DRIVER WORKING VOLTAGE CODE

HDD伺服电机

HDD SERVO MOTORS

机座号 (mm) : 80、110、130
 FRAME SIZE
 额定转矩 (Nm) : 1.3~17.8
 RATED TORQUE
 额定功率 (Kw) : 0.4~3.1
 RATED POWER
 额定转速 (rpm) : 1500、2000、3000
 RATED SPEED
 最高转速 (rpm) : 3000、4000、5000
 MAXIMUM SPEED
 极对数 : 5
 POLES
 转子惯量 : 中惯量
 ROTOR INERTIA
 反馈元件 : 可选
 FEEDBACK
 失电制动器 : 可选
 POWER-OFF BRAKE
 适配驱动器工作电压 (VAC) : 380
 MATCHED DRIVER WORKING VOLTAGE CODE

LDD伺服电机

LDD SERVO MOTORS

机座号 (mm) : 60、80、110、130
 FRAME SIZE
 额定转矩 (Nm) : 0.33~17.8
 RATED TORQUE
 额定功率 (Kw) : 0.1~3.1
 RATED POWER
 额定转速 (rpm) : 1500、2000、3000
 RATED SPEED
 最高转速 (rpm) : 2000、3000、5000、6000
 MAXIMUM SPEED
 极对数 : 5
 POLES
 转子惯量 : 中惯量
 ROTOR INERTIA
 反馈元件 : 可选
 FEEDBACK
 失电制动器 : 可配
 POWER-OFF BRAKE
 适配驱动器工作电压 (VAC) : 220
 MATCHED DRIVER WORKING VOLTAGE CODE

HBB伺服电机

HBB SERVO MOTORS

机座号 (mm) : 150、180
 FRAME SIZE
 额定转矩 (Nm) : 4.8~55.0
 RATED TORQUE
 额定功率 (Kw) : 0.85~8.6
 RATED POWER
 额定转速 (rpm) : 1500、2000
 RATED SPEED
 最高转速 (rpm) : 3000
 MAXIMUM SPEED
 极对数 : 4
 POLES
 转子惯量 : 中惯量
 ROTOR INERTIA
 反馈元件 : 可选
 FEEDBACK
 失电制动器 : 可配
 POWER-OFF BRAKE
 适配驱动器工作电压 (VAC) : 380
 MATCHED DRIVER WORKING VOLTAGE CODE

CTD系列车削电主轴

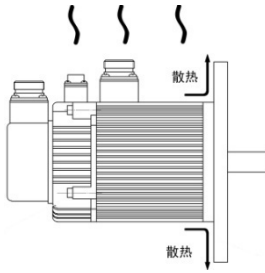
CTD SERIES SPINDLE MOTOR

套筒直径 (mm) : 150、180、200
 SLEEVE DIAMETER
 额定转矩 (Nm) : 7.0~52.5
 RATED TORQUE
 额定功率 (Kw) : 3.7、5.5、7.5、11
 RATED POWER
 额定转速 (rpm) : 2000、2500、3000
 RATED SPEED
 最高转速 (rpm) : 5000、6000、8000
 MAXIMUM SPEED
 过载倍速 : 150%
 OVER LOAD
 卡盘型式 : 液压
 CHUCK TYPE
 冷却方式 : 冷液
 COOLING WAY
 润滑方式 : 油脂
 LUBRICATION WAY
 轴承安装方式 : TBT/DB
 BEARING INSTALLATION
 适配驱动器工作电压 (VAC) : 380
 MATCHED DRIVER WORKING VOLTAGE CODE

安装与连线

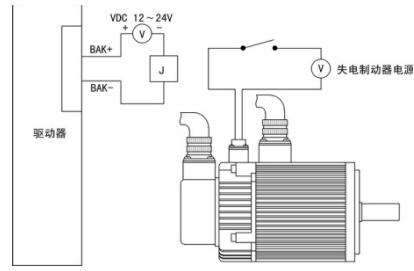
INSTALLED & CONNECT

请您关注以下 ATTENTIONS



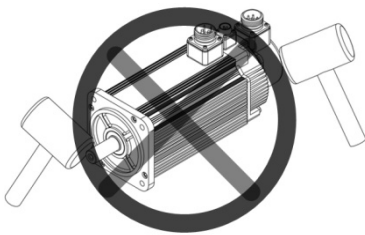
伺服电机为自冷式散热方式，安装时请选择足够大的安装板。伺服电机长期工作，机体本身会有一些的温度，这是正常情况。

The servo motor operate with natural cooling, please mounting in enough size plate. It's normal that the motors generate some heat when in long-time working.



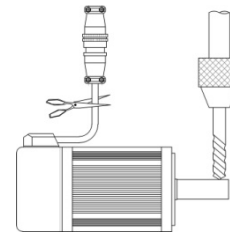
装配了失电制动器的伺服电机，其失电制动器的电源必须由驱动器控制开闭，否则会造成工作状态不佳。

The power-off brake in the some motor must be controled by drivers, if not, it will cause the motor default.



伺服电机内装精密反馈元件，严禁重力敲击电机轴伸端及后部。请注意电机轴伸端的最大径、轴向力的限值。

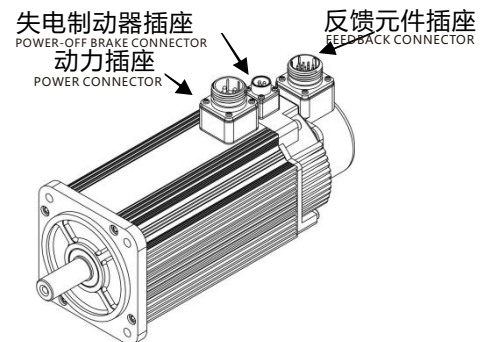
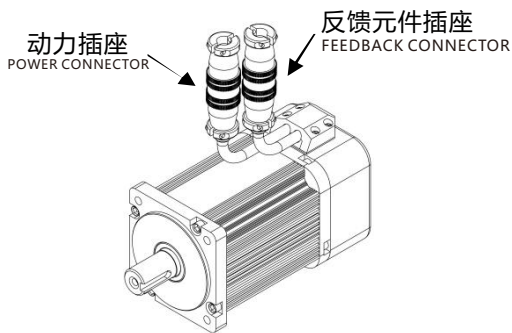
The motors have high-currency feedback components inside, please don't hit the shaft end and the rear. Pay attention to the limits of the maximum diameter and axial force about the shaft side.



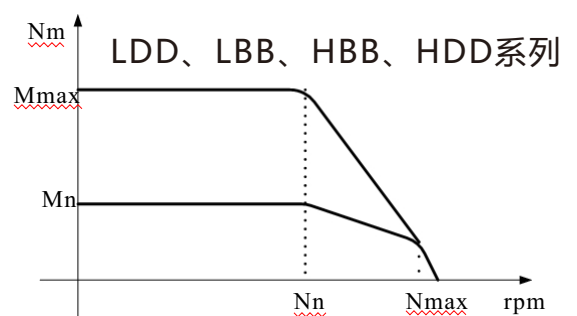
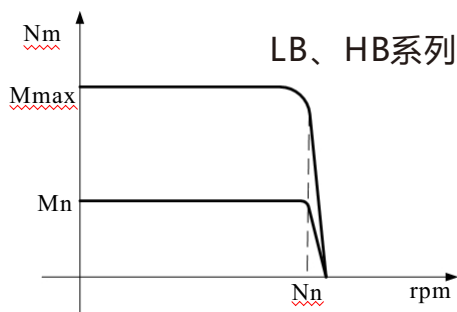
严禁随意更改、拆装及加工电机部件。请您将需求告之我们，我们来为您服务。

Don't change /assemble and process the parts of te motor arbitrarily. Please tell us your requirements ,we will at your service.

电机电连接器 MOTOR CONNECTOR



转矩转速曲线示意图 TORQUE & SPEED GRAPH

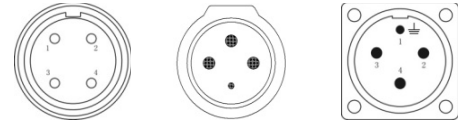


ST系列伺服电机的Mmax=3Mn；Mmax输出状态为短时工作。使用时请查询配置的驱动器输出容量。

ST servo motor series mmax=3mn .mmax output state is in short time operation. please refer to output capacity of configured driver while using

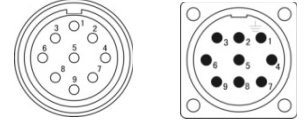
动力插座 (4P插座) : 60、80、110、130、150、180机座号
POWER SOCKET (4PIN)

绕组引线	U	V	W	⊕
插头编号	2	3	4	1



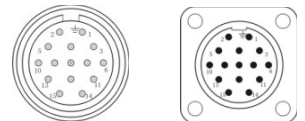
反馈元件插座: 省线增量式编码器 (代码F1, 9P插座/插头)
ENCODER SOCKET

信号	+5V	0V	A+	A-	B+	B-	Z+	Z-	⊕
插头编号	2	3	4	7	5	8	6	9	1



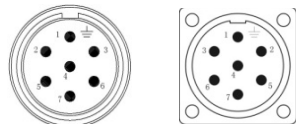
反馈元件插座: 非省线式增量编码器 (代码F、F5, 15 P, DB插座/插头)
ENCODER SOCKET

信号	+5V	0V	A+	A-	B+	B-	Z+	Z-	U+	U-	V+	V-	W+	W-	⊕
插头编号	2	3	4	7	5	8	6	9	10	13	11	14	12	15	1



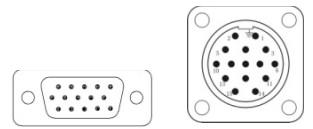
反馈元件插座: TAMAGAWA绝对式多圈编码器 (代码M、M1, 7P插座/插头)
ENCODER SOCKET

信号	+5V	0V	SD+	SD-	E+	E-	⊕
插头编号	7	5	6	4	3	2	1



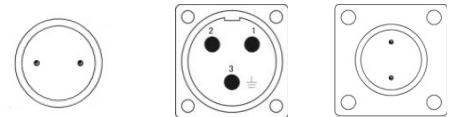
反馈元件插座: 旋转变压器 (代码X, 9P DB插头/插座)
ENCODER SOCKET

信号	R1	R2	S1	S3	S2	S4	空	空	⊕
插头编号	2	3	4	5	6	7	8	9	1



失电制动器插座 (2 P、3 P) : 60、80、110、130、150、180机座号
ELECTRIC LOSS BRAKE SOCKET

机座号	60	80	110	130	150	180
工作电压	24VDC	24VDC	24VDC	24VDC	100VDC	100VDC
制动转矩	≥1.3NM	≥2.5NM	≥8Nm	≥12Nm	≥30Nm	≥30Nm
工作电流	≤0.6A					
插座编号	1			2		
备注	电源接入无极性要求 150、180机座号亦可配DC24V失电制动器					



编码器代码:

F: 增量复合式光电编码器 (2500C/T) F1: 省线增量复合光电编码器 (2500C/T)
INCREMENTAL ENCODER (2500C/T)

F5: 增量复合式光电编码器 (5000C/T)
INCREMENTAL ENCODER (5000C/T)

M: TAMAGAWA 绝对值串口协议光电编码器 (17bit/33bit)
TAMAGAWA ABSOLUTE ENCODER (17bit/33bit)

M1: TAMAGAWA 绝对值串口协议光电编码器 (23bit/39bit)
TAMAGAWA ABSOLUTE ENCODER (23bit/39bit)

X: 旋转变压器
ROTARY TRANSFORMER

特点 FEATURES

机座 (mm) : 110、130、150
FRAME SIZE
额定转速(rpm): 1500、2000、2500、3000
RATED SPEED
失电制动器: 选配
ELECTRIC LOSS BRAKE
绝缘等级: B
INSULATION GRADE
安装方式: 法兰盘
INSTALLATION METHOD
环境温度: 0~55°C
ENVIRONMENT TEMPERATURE

额定转矩 (Nm) : 2.0~27
RATED TORQUE
额定功率(Kw): 0.6~5.5
RATED POWER
极对数: 4
POLES
防护等级: : 密封自冷式IP65
PROTECTION CLASS
适配驱动器工作电压 (VAC) : 220
MATCHED DRIVER
环境湿度: <90% (无结露)
ENVIRONMENT HUMIDITY

LB系列伺服电机命名规则 LB PRODUCTS CODE SPECIFICATION

110	ST	-	M	020	30	L	F	B	Z	/C
(1)	(2)		(3)	(4)	(5)	(6)	(7)	(8)	(9)	(10)

- | | | |
|------------------------------------------------------------------------|-----------------------------------------------------------------------|--------------------------------------------------------|
| (1) 机座号
FRAME SIZE | (2) 交流永磁同步伺服电机
AC PERMANENT MAGNET | (3) 反馈元件类型
FEEDBACK COMPONENTS TYPE |
| (4) 额定转矩: 三位数 × 0.1Nm
RATED TORQUE: THE THREE-DIGIT NUMBER×0.1NM | (5) 额定转速: 二位数×100rpm
RATED SPEED: THE DOUBLE-DIGITAL NUMBER×100RPM | (6) 驱动器工作电压 (VAC) : 220
DRIVER WORKING VOLTAGE CODE |
| (7) 编码器代码
ENCODER CODE | (8) 中惯量
MEDIUM INERTIA | (9) 安装了失电制动器
WITH THE POWER-OFF BRAKE |
| (10) 轴伸端键槽代码, 无键无代码
THE SHAFT END KEYWAY CODE, NO CODE MEANS NO KEY | | |

LB系列一览表 LB SERIES LIST

电机型号 MOTOR TYPE	主要参数 TECHNICAL PARAMETERS			
	额定转矩 RATED TORQUE	额定转速 RATED SPEED	额定电流 RATED CURRENT	额定功率 RATED POWER
110ST-M02030L□B	2.0 Nm	3000 rpm	4.0 A	0.6 Kw
110ST-M04030L□B	4.0 Nm	3000 rpm	5.0 A	1.2 Kw
110ST-M05030L□B	5.0 Nm	3000 rpm	6.0 A	1.5 Kw
110ST-M06020L□B	6.0 Nm	2000 rpm	6.0 A	1.2 Kw
110ST-M06030L□B	6.0 Nm	3000 rpm	8.0 A	1.8 Kw
130ST-M04025L□B	4.0 Nm	2500 rpm	4.0 A	1.0 Kw
130ST-M05025L□B	5.0 Nm	2500 rpm	5.0 A	1.3 Kw
130ST-M06025L□B	6.0 Nm	2500 rpm	6.0 A	1.5 Kw
130ST-M07720L□B	7.7 Nm	2000 rpm	6.0 A	1.6 Kw
130ST-M07725L□B	7.7 Nm	2500 rpm	7.5 A	2.0 Kw
130ST-M07730L□B	7.7 Nm	3000 rpm	9.0 A	2.4 Kw
130ST-M10015L□B	10.0 Nm	1500 rpm	6.0 A	1.5 Kw
130ST-M10025L□B	10.0 Nm	2500 rpm	10.0 A	2.6 Kw
130ST-M15015L□B	15.0 Nm	1500 rpm	9.5 A	2.3 Kw
130ST-M15025L□B	15.0 Nm	2500 rpm	17.0 A	3.8 Kw
150ST-M15025L□B	15.0 Nm	2500 rpm	16.5 A	3.9 Kw
150ST-M18020L□B	18.0 Nm	2000 rpm	16.5 A	3.6 Kw
150ST-M23020L□B	23.0 Nm	2000 rpm	20.5 A	4.7 Kw
150ST-M27020L□B	27.0 Nm	2000 rpm	20.5 A	5.5 Kw

● 110机座 (3000rpm)

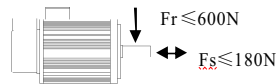
FRAME

电机型号 MOTOR TYPE	110ST-M02030L□B	110ST-M04030L□B	110ST-M05030L□B	110ST-M06020L□B	110ST-M06030L□B
额定功率 RATED POWER	0.6 Kw	1.2 Kw	1.5Kw	1.2 Kw	1.8 Kw
额定转矩 RATED TORQUE	2.0 Nm	4.0 Nm	5.0 Nm	6.0 Nm	6.0 Nm
额定转速 RATED SPEED	3000 rpm	3000 rpm	3000 rpm	2000 rpm	3000 rpm
额定电流 RATED CURRENT	4.0 A	5.0 A	6.0 A	6.0 A	8.0 A
转子惯量 ROTOR INERTIA	0.413×10 ⁻³ Kg·m ² (0.477×10 ⁻³ Kg·m ²)	0.693×10 ⁻³ Kg·m ² (0.757×10 ⁻³ Kg·m ²)	0.856×10 ⁻³ Kg·m ² (0.92×10 ⁻³ Kg·m ²)	1.029×10 ⁻³ Kg·m ² (1.093×10 ⁻³ Kg·m ²)	1.029×10 ⁻³ Kg·m ² (1.093×10 ⁻³ Kg·m ²)
机械时间常数 MECHANICAL CONSTANT TIME	4.867 ms	2.531 ms	2.12 ms	1.976 ms	1.855 ms
最大转矩 MAX TORQUE	6.0 Nm	12.0 Nm	15.0 Nm	18.0 Nm	18.0 Nm

括号内为带失电制动器的转子惯量。
Rotor moment of inertia with power-off brake in brackets.

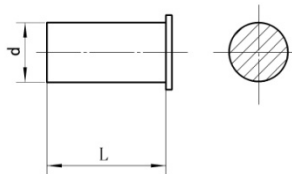
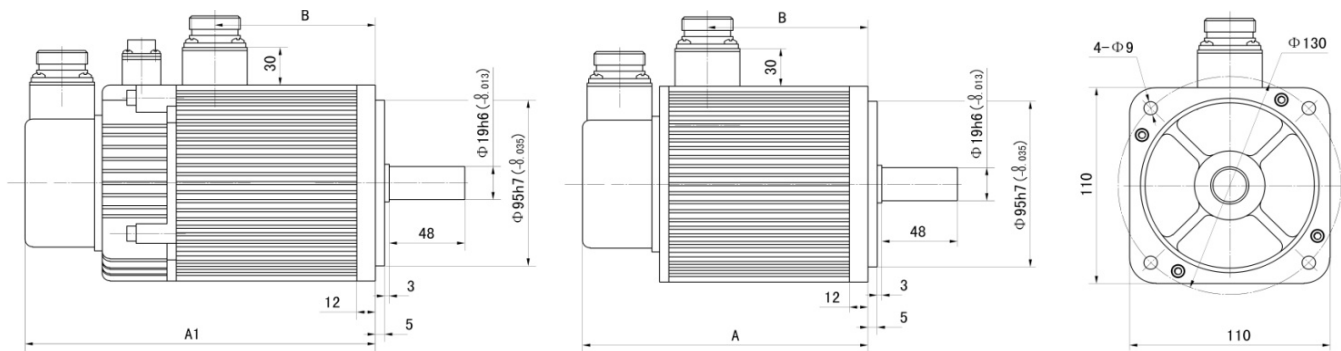
□ 编码器代码
Encoder code

最大径、轴向力：
Max diameter/axial force

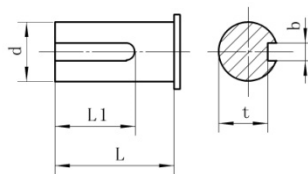


尺寸图

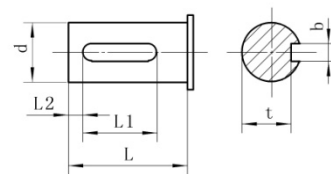
DIMENSIONAL DRAWING



A 型 键
KEYS TYPE A



B 型 键
KEYS TYPE B



C 型 键
KEYS TYPE C

型号	A (mm)	A1 (mm)	B (mm)	L (mm)	L1 (mm)	L2 (mm)	d (mm)	b (mm)	t (mm)
110ST-M02030L□B	158	200	76	48	40	3	Φ19 ⁰ _{-0.013}	6 ⁰ _{-0.03}	15.5 ⁰ _{-0.1}
110ST-M04030L□B	185	227	102	48	40	3	Φ19 ⁰ _{-0.013}	6 ⁰ _{-0.03}	15.5 ⁰ _{-0.1}
110ST-M05030L□B	200	242	118	48	40	3	Φ19 ⁰ _{-0.013}	6 ⁰ _{-0.03}	15.5 ⁰ _{-0.1}
110ST-M06020L□B 110ST-M06030L□B	217	259	134	48	40	3	Φ19 ⁰ _{-0.013}	6 ⁰ _{-0.03}	15.5 ⁰ _{-0.1}

● 130机座 (2500rpm)

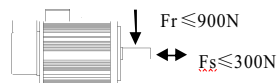
FRAME

电机型号 MOTOR TYPE	130ST-M04025L _B	130ST-M05025L _B	130ST-M06025L _B
额定功率 RATED POWER	1.0 Kw	1.3 Kw	1.5 Kw
额定转矩 RATED TORQUE	4.0 Nm	5.0 Nm	6.0 Nm
额定转速 RATED SPEED	2500 rpm	2500 rpm	2500 rpm
额定电流 RATED CURRENT	4.0 A	5.0 A	6.0 A
转子惯量 ROTOR INERTIA	1.04×10 ⁻³ Kg·m ² (1.207×10 ⁻³ Kg·m ²)	1.337×10 ⁻³ Kg·m ² (1.504×10 ⁻³ Kg·m ²)	1.556×10 ⁻³ Kg·m ² (1.723×10 ⁻³ Kg·m ²)
机械时间常数 MECHANICAL CONSTANT TIME	3.457 ms	3.478 ms	2.824 ms
最大转矩 MAX TORQUE	12.0 Nm	15.0 Nm	18.0 Nm

括号内为带失电制动器的转子惯量。
Rotor moment of inertia with power-off brake in brackets.

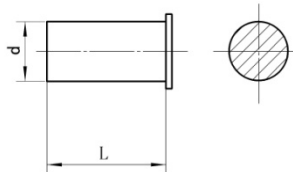
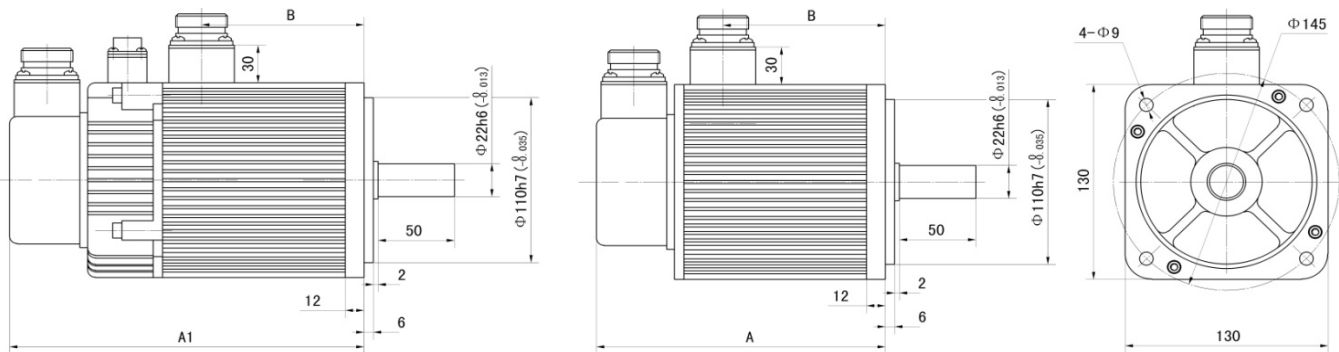
□ 编码器代码
Encoder code

最大径、轴向力：
Max diameter/axial force

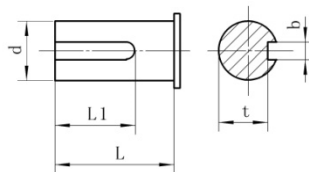


尺寸图

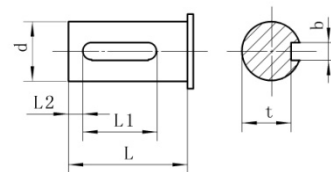
DIMENSIONAL DRAWING



A 型键
KEYS TYPE A



B 型键
KEYS TYPE B



C 型键
KEYS TYPE C

型号	A (mm)	A1 (mm)	B (mm)	L (mm)	L1 (mm)	L2 (mm)	d (mm)	b (mm)	t (mm)
130ST-M04025L _B	163	205	80	50	40	5	Φ22 ⁰ _{-0.013}	6 ⁰ _{-0.03}	18.5 ⁰ _{-0.1}
130ST-M05025L _B	171	213	89	50	40	5	Φ22 ⁰ _{-0.013}	6 ⁰ _{-0.03}	18.5 ⁰ _{-0.1}
130ST-M06025L _B	181	223	98	50	40	5	Φ22 ⁰ _{-0.013}	6 ⁰ _{-0.03}	18.5 ⁰ _{-0.1}

● 130机座 (1500rpm、2000rpm、2500rpm、3000rpm)

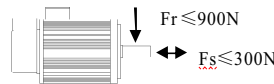
FRAME

电机型号 MOTOR TYPE	130ST-M07720L□B	130ST-M07725L□B	130ST-M07730L□B	130ST-M10015L□B
额定功率 RATED POWER	1.6 Kw	2.0 Kw	2.4 Kw	1.5 Kw
额定转矩 RATED TORQUE	7.7 Nm	7.7 Nm	7.7 Nm	10.0 Nm
额定转速 RATED SPEED	2000 rpm	2500 rpm	3000 rpm	1500 rpm
额定电流 RATED CURRENT	6.0 A	7.5 A	9.0 A	6.0 A
转子惯量 ROTOR INERTIA	1.959×10 ⁻³ Kg·m ² (2.126×10 ⁻³ Kg·m ²)	1.959×10 ⁻³ Kg·m ² (2.126×10 ⁻³ Kg·m ²)	1.959×10 ⁻³ Kg·m ² (2.126×10 ⁻³ Kg·m ²)	2.539×10 ⁻³ Kg·m ² (2.706×10 ⁻³ Kg·m ²)
机械时间常数 MECHANICAL CONSTANT TIME	2.356 ms	2.142 ms	2.262 ms	2.196 ms
最大转矩 MAX TORQUE	23.1 Nm	23.1 Nm	23.1 Nm	30.0 Nm

括号内为带失电制动器的转子惯量。
Rotor moment of inertia with power-off brake in brackets.

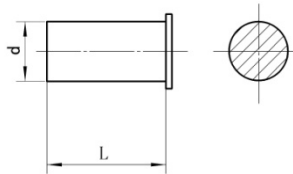
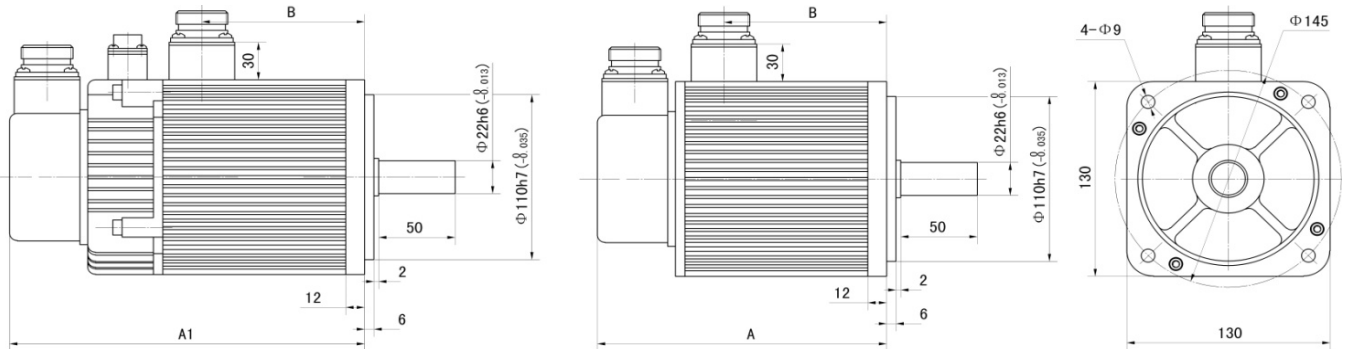
□ 编码器代码
Encoder code

最大径、轴向力：
Max diameter/axial force

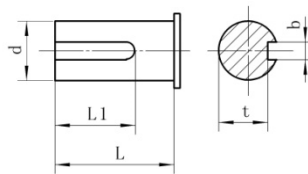


尺寸图

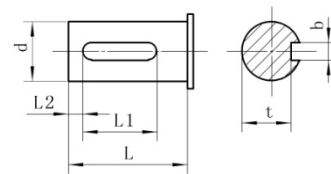
DIMENSIONAL DRAWING



A 型键
KEYS TYPE A



B 型键
KEYS TYPE B



C 型键
KEYS TYPE C

型号	A (mm)	A1 (mm)	B (mm)	L (mm)	L1 (mm)	L2 (mm)	d (mm)	b (mm)	t (mm)
130ST-M07720L□B 130ST-M07725L□B 130ST-M07730L□B	195	237	112	50	40	5	Φ22 ⁰ _{-0.013}	6 ⁰ _{-0.03}	18.5 ⁰ _{-0.1}
130ST-M10015L□B	219	261	136	50	40	5	Φ22 ⁰ _{-0.013}	6 ⁰ _{-0.03}	18.5 ⁰ _{-0.1}

● 130机座 (1500rpm、2500rpm)

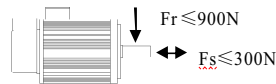
FRAME

电机型号 MOTOR TYPE	130ST-M10025L-B	130ST-M15015L-B	130ST-M15025L-B
额定功率 RATED POWER	2.6 Kw	2.3 Kw	3.9Kw
额定转矩 RATED TORQUE	10.0 Nm	15.0 Nm	15.0Nm
额定转速 RATED SPEED	2500 rpm	1500 rpm	2500 rpm
额定电流 RATED CURRENT	10.0 A	9.5 A	17.0 A
转子惯量 ROTOR INERTIA	2.539×10 ⁻³ Kg·m ² (2.706×10 ⁻³ Kg·m ²)	2.914×10 ⁻³ Kg·m ² (3.081×10 ⁻³ Kg·m ²)	2.914×10 ⁻³ Kg·m ² (3.081×10 ⁻³ Kg·m ²)
机械时间常数 MECHANICAL CONSTANT TIME	1.996 ms	1.606 ms	1.146 ms
最大转矩 MAX TORQUE	30.0 Nm	45.0 Nm	45.0 Nm

括号内为带失电制动器的转子惯量。
Rotor moment of inertia with power-off brake in brackets.

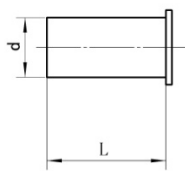
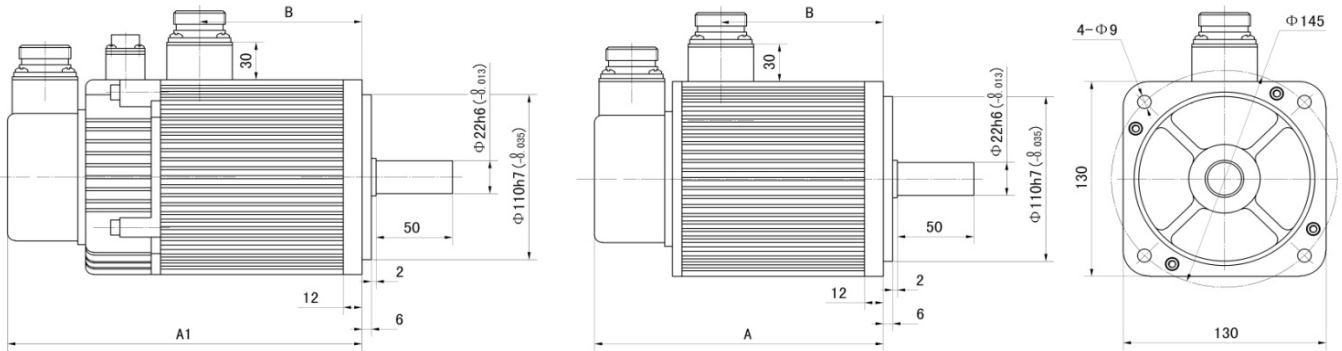
□ 编码器代码
Encoder code

最大径、轴向力：
Max diameter/axial force

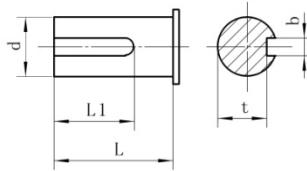


尺寸图

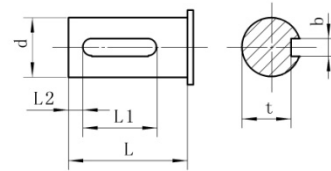
DIMENSIONAL DRAWING



A 型 键
KEYS TYPE A



B 型 键
KEYS TYPE B



C 型 键
KEYS TYPE C

型号	A (mm)	A1 (mm)	B (mm)	L (mm)	L1 (mm)	L2 (mm)	d (mm)	b (mm)	t (mm)
130ST-M10025L-B	219	261	136	50	40	5	Φ22 ⁰ _{-0.013}	6 ⁰ _{-0.03}	18.5 ⁰ _{-0.1}
130ST-M15015L-B 130ST-M15025L-B	267	309	184	50	40	5	Φ22 ⁰ _{-0.013}	6 ⁰ _{-0.03}	18.5 ⁰ _{-0.1}

● 150机座 (2000rpm、2500rpm)

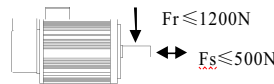
FRAME

电机型号 MOTOR TYPE	150ST-M15025LB	150ST-M18020LB	150ST-M23020LB	150ST-M27020LB
额定功率 RATED POWER	3.8 Kw	3.6 Kw	4.7 Kw	5.5 Kw
额定转矩 RATED TORQUE	15.0 Nm	18.0 Nm	23.0 Nm	27.0 Nm
额定转速 RATED SPEED	2500 rpm	2000 rpm	2000 rpm	2000 rpm
额定电流 RATED CURRENT	16.5A	16.5 A	20.5 A	20.5 A
转子惯量 ROTOR INERTIA	4.609×10 ⁻³ Kg ^m ² (5.209×10 ⁻³ Kg ^m ²)	6.222×10 ⁻³ Kg ^m ² (6.6×10 ⁻³ Kg ^m ²)	8.345×10 ⁻³ Kg ^m ² (8.945×10 ⁻³ Kg ^m ²)	9.871×10 ⁻³ Kg ^m ² (10.471×10 ⁻³ Kg ^m ²)
机械时间常数 MECHANICAL CONSTANT TIME	1.941ms	2.07 ms	1.909 ms	2.564 ms
最大转矩 MAX TORQUE	45.0 Nm	54.0 Nm	69.0 Nm	81.0 Nm

括号内为带失电制动器的转子惯量。
Rotor moment of inertia with power-off brake in brackets.

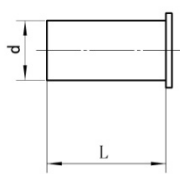
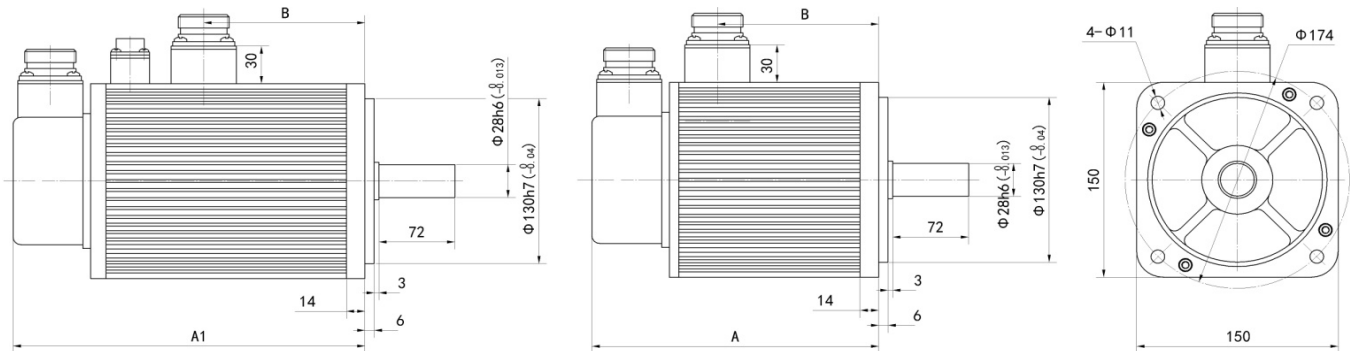
□ 编码器代码
Encoder code

最大径、轴向力：
Max diameter/axial force

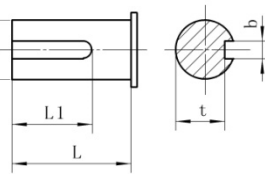
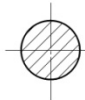


尺寸图

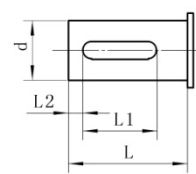
DIMENSIONAL DRAWING



A 型 键
KEYS TYPE A



B 型 键
KEYS TYPE B



C 型 键
KEYS TYPE C

型号	A (mm)	A1 (mm)	B (mm)	L (mm)	L1 (mm)	L2 (mm)	d (mm)	b (mm)	t (mm)
150ST-M15025LB	231	293	146	72	60 (B型) 55 (C型)	5	Φ28 ⁰ _{-0.013}	8 ⁰ _{-0.03}	24 ⁰ _{-0.1}
150ST-M18020LB	250	312	166	72	60 (B型) 55 (C型)	5	Φ28 ⁰ _{-0.013}	8 ⁰ _{-0.03}	24 ⁰ _{-0.1}
150ST-M23020LB	280	342	196	72	60 (B型) 55 (C型)	5	Φ28 ⁰ _{-0.013}	8 ⁰ _{-0.03}	24 ⁰ _{-0.1}
150ST-M27020LB	306	368	222	72	60 (B型) 55 (C型)	5	Φ28 ⁰ _{-0.013}	8 ⁰ _{-0.03}	24 ⁰ _{-0.1}

特点 FEATURES

机座 (mm) : 60、80、110、130
FRAME SIZE
额定转速(rpm): 1500、2000、2500、3000
RATED SPEED
失电制动器: 选配
ELECTRIC LOSS BRAKE
绝缘等级: F
INSULATION GRADE
安装方式: 法兰盘
INSTALLATION METHOD
环境温度: 0~55°C
ENVIRONMENT TEMPERATURE

额定转矩 (Nm) : 0.33~17.8
RATED TORQUE
最高转速 (rpm) : 2000、3000、4000、5000、6000
MAXIMUM SPEED
额定功率(Kw): 0.1~3.1
RATED POWER
极对数: 5
POLES
防护等级: : 密封自冷式IP65
PROTECTION CLASS
适配驱动器工作电压 (VAC) : 220
MATCHED DRIVER
环境湿度: < 90% (无结露)
ENVIRONMENT HUMIDITY

LDD系列伺服电机命名规则 LDD PRODUCTS CODE SPECIFICATION

110	ST	-	M	042	15	30	L	M1	D	D	Z	/C
(1)	(2)		(3)	(4)	(5)	(6)	(7)	(8)	(9)	(10)	(11)	(12)

(1) 机座号
FRAME SIZE

(4) 额定转矩: 三位数 × 0.1Nm
RATED TORQUE: THE THREE-DIGIT NUMBER×0.1NM

(7) 驱动器工作电压 (VAC) : 220
DRIVER WORKING VOLTAGE CODE

(10) 具有最高转速特性
MAXIMUM SPEED FEATURES

(2) 交流永磁同步伺服电机
AC PERMANENT MAGNET

(5) 额定转速: 二位数×100rpm
RATED SPEED: THE DOUBLE-DIGITAL NUMBER×100RPM

(6) 编码器代码
ENCODER CODE

(11) 安装了失电制动器
WITH THE POWER-OFF BRAKE

(3) 反馈元件类型
FEEDBACK COMPONENTS TYPE

(6) 最高转速: 二位数×100rpm
MAXIMUM SPEED: THE DOUBLE-DIGITAL NUMBER×100RPM

(9) 中惯量
MEDIUM INERTIA

(12) 轴伸端键槽代码, 无键无代码
THE SHAFT END KEYWAY CODE, NO CODE MEANS NO KEY

LDD系列一览表

LDD SERIES LIST

电机型号 MOTOR TYPE	主要参数 TECHNICAL PARAMETERS				
	额定转矩 RATED TORQUE	额定转速 RATED SPEED	最高转速 MAXIMUM SPEED	额定电流 RATED CURRENT	额定功率 RATED POWER
60ST-M0033060LDD	0.32 Nm	3000 rpm	6000 rpm	0.9 A	0.1 Kw
60ST-M0063060LDD	0.64 Nm	3000 rpm	6000 rpm	1.6 A	0.2 Kw
60ST-M0123060LDD	1.27 Nm	3000 rpm	6000 rpm	2.9 A	0.4 Kw
60ST-M0173060LDD	1.75 Nm	3000 rpm	6000 rpm	3.9 A	0.55 Kw
80ST-M0133050LDD	1.3 Nm	3000 rpm	5000 rpm	2.2 A	0.4 Kw
80ST-M0243050LDD	2.4 Nm	3000 rpm	5000 rpm	4.8 A	0.75 Kw
80ST-M0333050LDD	3.3 Nm	3000 rpm	5000 rpm	6.1 A	1.0 Kw
80ST-M0403050LDD	4.0 Nm	3000 rpm	5000 rpm	7.8 A	1.3 Kw
110ST-M0422030LDD	4.2 Nm	2000 rpm	3000 rpm	4.5 A	0.88 Kw
110ST-M0423040LDD	4.2 Nm	3000 rpm	4000 rpm	6.5 A	1.3 Kw
110ST-M0542030LDD	5.4 Nm	2000 rpm	3000 rpm	5.5 A	1.1 Kw
110ST-M0543040LDD	5.4 Nm	3000 rpm	4000 rpm	8.2 A	1.7 Kw
110ST-M0642030LDD	6.4 Nm	2000 rpm	3000 rpm	6.5 A	1.3 Kw
110ST-M0642540LDD	6.4 Nm	2500 rpm	4000 rpm	9.5 A	1.7 Kw
110ST-M0752030LDD	7.5 Nm	2000 rpm	3000 rpm	8.0 A	1.6 Kw
130ST-M0421530LDD	4.2 Nm	1500 rpm	3000 rpm	5.5 A	0.65 Kw
130ST-M0423040LDD	4.2 Nm	3000 rpm	4000 rpm	7.0 A	1.3 Kw
130ST-M0541530LDD	5.4 Nm	1500 rpm	3000 rpm	6.5 A	0.85 Kw
130ST-M0543040LDD	5.4 Nm	3000 rpm	4000 rpm	9.5 A	1.7 Kw
130ST-M0641530LDD	6.4 Nm	1500 rpm	3000 rpm	8.0 A	1.0 Kw
130ST-M0643040LDD	6.4 Nm	3000 rpm	4000 rpm	11.5 A	2.0 Kw
130ST-M0751530LDD	7.5 Nm	1500 rpm	3000 rpm	9.0 A	1.2 Kw
130ST-M0753040LDD	7.5 Nm	3000 rpm	4000 rpm	12.0 A	2.4 Kw
130ST-M0841530LDD	8.4 Nm	1500 rpm	3000 rpm	9.5 A	1.3 Kw
130ST-M0843040LDD	8.4 Nm	3000 rpm	4000 rpm	13.5 A	2.6 Kw
130ST-M0961530LDD	9.6 Nm	1500 rpm	3000 rpm	10.0 A	1.5 Kw
130ST-M0962540LDD	9.6 Nm	2500 rpm	4000 rpm	16.0 A	2.5 Kw
130ST-M1151530LDD	11.5 Nm	1500 rpm	3000 rpm	14.0 A	1.8 Kw
130ST-M1152040LDD	11.5 Nm	2000 rpm	4000 rpm	17.8 A	2.4 Kw
130ST-M1461520LDD	14.6 Nm	1500 rpm	2000 rpm	11.0 A	2.3 Kw
130ST-M1462040LDD	14.6 Nm	2000 rpm	4000 rpm	23.0 A	3.1 Kw
130ST-M1461530LDD	14.6 Nm	1500 rpm	3000 rpm	16.0 A	2.3 Kw
130ST-M1781520LDD	17.8 Nm	1500 rpm	2000 rpm	19.0 A	2.8 Kw

□编码器代码
Encodercode

● 60机座 (3000rpm/6000rpm)

FRAME

电机型号 MOTOR TYPE	60ST-M0033060L□DD	60ST-M0063060L□DD
额定功率 RATED POWER	0.1 Kw	0.2 Kw
额定转矩 RATED TORQUE	0.32 Nm	0.64 Nm
额定转速 RATED SPEED	3000 rpm	3000 rpm
最高转速 MAXIMUM SPEED	6000 rpm	6000 rpm
额定电流 RATED CURRENT	0.9 A	1.6 A
转子惯量 ROTOR INERTIA	0.131Kg ^m ²×10 ⁻⁴ (0.141 Kg ^m ²×10 ⁻⁴)	0.24×10 ⁻⁴ Kg ^m ² (0.25×10 ⁻⁴ Kg ^m ²)
机械时间常数 MECHANICAL CONSTANT TIME	2.005ms	1.668 ms
最大转矩 MAX TORQUE	1.12 Nm	2.24 Nm

● 60机座 (3000rpm/6000rpm)

FRAME

电机型号 MOTOR TYPE	60ST-M0123060L□DD	60ST-M0173060L□DD
额定功率 RATED POWER	0.4 Kw	0.55 Kw
额定转矩 RATED TORQUE	1.27 Nm	1.75 Nm
额定转速 RATED SPEED	3000 rpm	3000 rpm
最高转速 MAXIMUM SPEED	6000 rpm	6000 rpm
额定电流 RATED CURRENT	2.9 A	3.9 A
转子惯量 ROTOR INERTIA	0.315Kg ^m ²×10 ⁻⁴ (0.325Kg ^m ²×10 ⁻⁴)	0.401Kg ^m ²×10 ⁻⁴ (0.411 Kg ^m ²×10 ⁻⁴)
机械时间常数 MECHANICAL CONSTANT TIME	0.761 ms	0.6 ms
最大电流 MAX CURRENT	8.8 A	11.9 A
最大转矩 MAX TORQUE	3.9 Nm	7.2 Nm

括号内为带失电制动器的转子惯量。

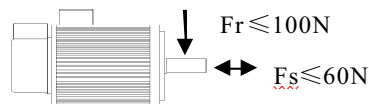
Rotor moment of inertia with power-off brake in brackets.

□编码器代码

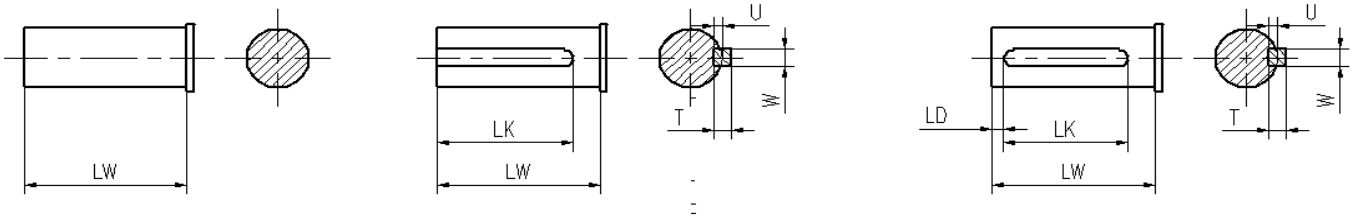
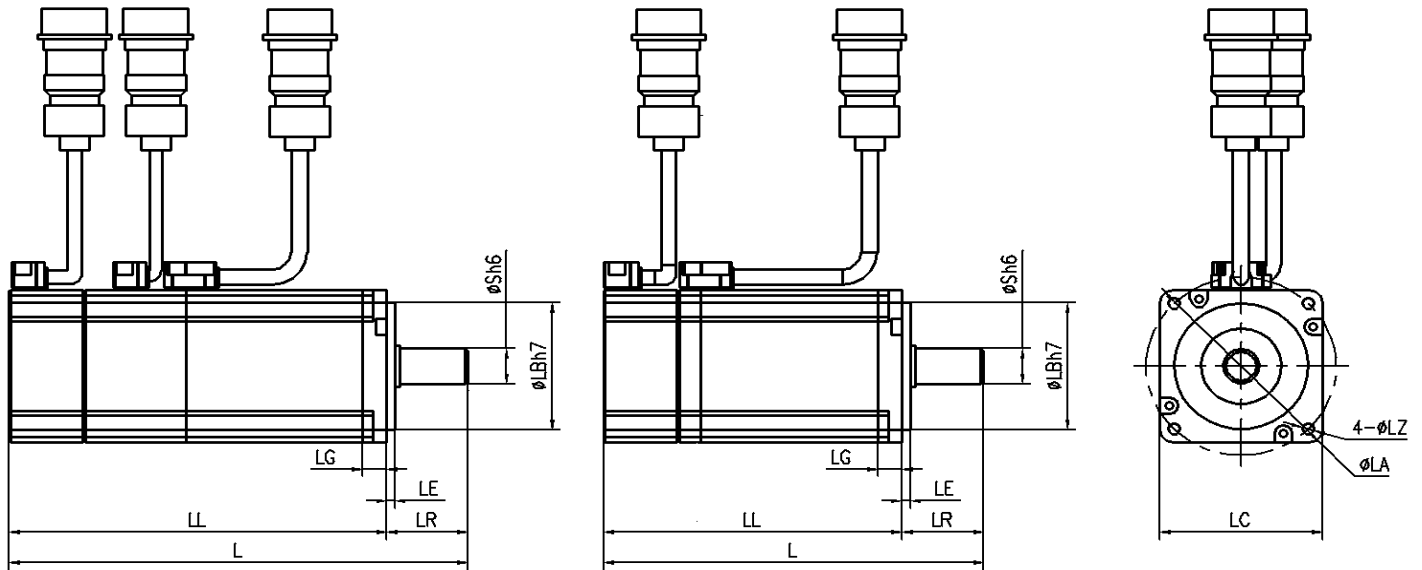
Encoder code

最大径、轴向力：

Max diameter/axial force



● 安装尺寸



A 型键
KEYS TYPE A

B 型键
KEYS TYPE B

C 型键
KEYS TYPE C

型号	L	LL	LR	LE	LG	LC	LA	LZ	φS	LB	T	U	W	LK	LW	LD
60ST-M0033060L□DD	113 (142)	83 (112)	30	3	9	60	70	4.5	14 ⁰ _{-0.03}	50 ⁰ _{-0.04}	5	3	5	20	25	3
60ST-M0063060L□DD	122 (151)	92 (121)	30	3	9	60	70	4.5	14 ⁰ _{-0.03}	50 ⁰ _{-0.04}	5	3	5	20	25	3
60ST-M0123060L□DD	140 (169)	110 (139)	30	3	9	60	70	4.5	14 ⁰ _{-0.03}	50 ⁰ _{-0.04}	5	3	5	20	25	3
60ST-M0173060L□DD	155 (184)	125 (154)	30	3	9	60	70	4.5	14 ⁰ _{-0.03}	50 ⁰ _{-0.04}	5	3	5	20	25	3

注：括号内的数值为带失电制动器的电机长度。

Attention: Rotor moment of inertia with power-off brake in brackets.

● 80机座 (3000rpm/5000rpm)

FRAME

电机型号 MOTOR TYPE	80ST-M0133050L _{DD}	80ST-M0243050L _{DD}
额定功率 RATED POWER	0.4 Kw	0.75 Kw
额定转矩 RATED TORQUE	1.3 Nm	2.4 Nm
额定转速 RATED SPEED	3000 rpm	3000 rpm
最高转速 MAXIMUM SPEED	5000 rpm	5000 rpm
额定电流 RATED CURRENT	2.2 A	4.8 A
转子惯量 ROTOR INERTIA	0.938Kg $m^2 \times 10^{-4}$ (1.049Kg $m^2 \times 10^{-4}$)	1.813Kg $m^2 \times 10^{-4}$ (1.924Kg $m^2 \times 10^{-4}$)
机械时间常数 MECHANICAL CONSTANT TIME	0.568 ms	0.447 ms
最大转矩 MAX TORQUE	3.9 Nm	7.2 Nm

● 80机座 (3000rpm/5000rpm)

FRAME

电机型号 MOTOR TYPE	80ST-M0333050L _{DD}	80ST-M0403050L _{DD}
额定功率 RATED POWER	1.0 Kw	1.3 Kw
额定转矩 RATED TORQUE	3.3 Nm	4.0 Nm
额定转速 RATED SPEED	3000 rpm	3000 rpm
最高转速 MAXIMUM SPEED	5000 rpm	5000 rpm
额定电流 RATED CURRENT	6.1 A	7.8 A
转子惯量 ROTOR INERTIA	2.298Kg $m^2 \times 10^{-4}$ (2.409Kg $m^2 \times 10^{-4}$)	2.783Kg $m^2 \times 10^{-4}$ (2.894 Kg $m^2 \times 10^{-4}$)
机械时间常数 MECHANICAL CONSTANT TIME	0.425 ms	0.73 ms
最大转矩 MAX TORQUE	9.9 Nm	12.0 Nm

括号内为带失电制动器的转子惯量。

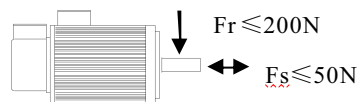
Rotor moment of inertia with power-off brake in brackets.

□ 编码器代码

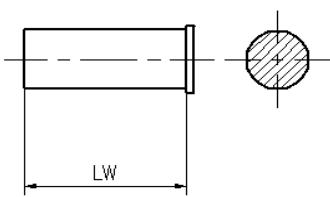
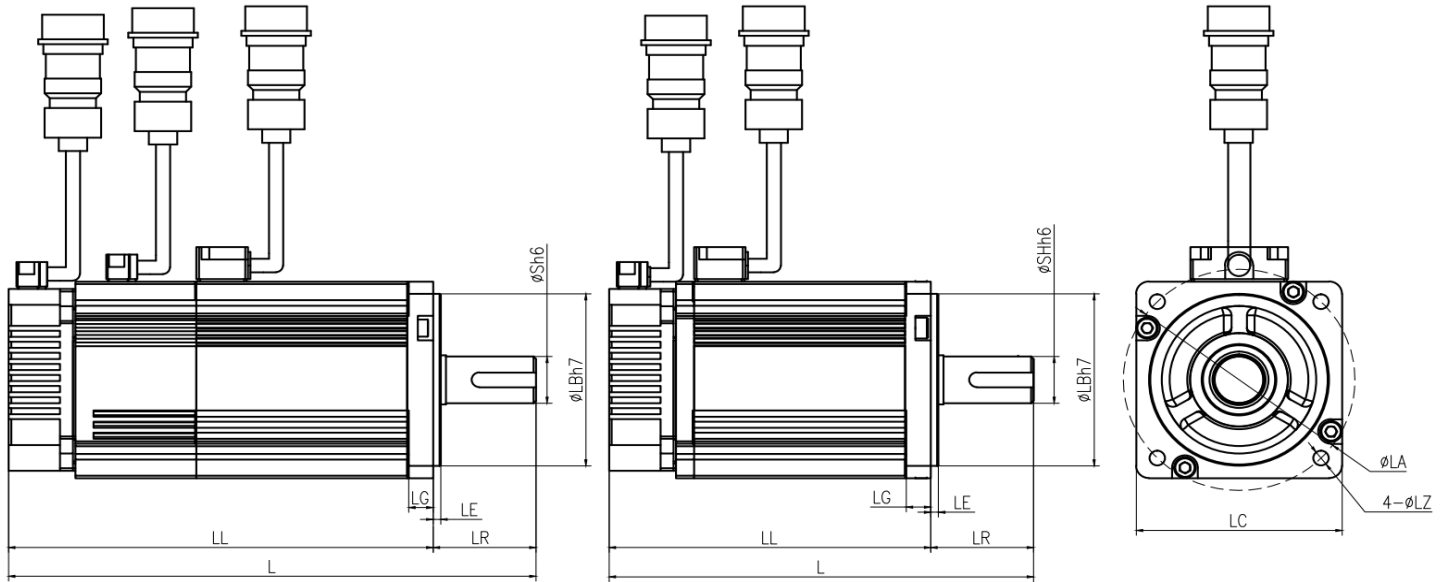
Encoder code

最大径、轴向力：

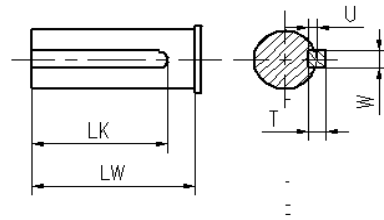
Max diameter/axial force



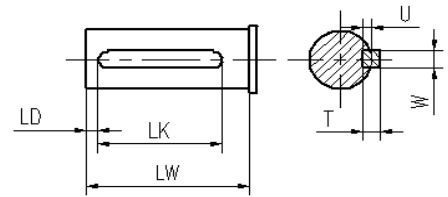
● 安装尺寸



A 型键
KEYS TYPE A



B 型键
KEYS TYPE B



C 型键
KEYS TYPE C

型号	L	LL	LR	LE	LG	LC	LA	LZ	ϕS	LB	T	U	W	LK	LW	LD
80ST-M0133050L□DD	143 (183)	103 (143)	40	3	9.5	80	90	6	$19^{0}_{-0.013}$	$70^{0}_{-0.03}$	6	3.5	6	25	35	5
80ST-M0243050L□DD	165 (205)	125 (165)	40	3	9.5	80	90	6	$19^{0}_{-0.013}$	$70^{0}_{-0.03}$	6	3.5	6	25	35	5
80ST-M0333050L□DD	180 (220)	140 (180)	40	3	9.5	80	90	6	$19^{0}_{-0.013}$	$70^{0}_{-0.03}$	6	3.5	6	25	35	5
80ST-M0403050L□DD	195 (235)	155 (195)	40	3	9.5	80	90	6	$19^{0}_{-0.013}$	$70^{0}_{-0.03}$	6	3.5	6	25	35	5

注：括号内的数值为带失电制动器的电机长度。
Attention: Rotor moment of inertia with power-off brake in brackets.

● 110 机座 (2000rpm/3000rpm)

FRAME

电机型号 MOTOR TYPE	110ST-M0422030L _{DD}	110ST-M0542030L _{DD}	110ST-M0642030L _{DD}	110ST-M0752030L _{DD}
额定功率 RATED POWER	0.88 Kw	1.1 Kw	1.3 Kw	1.6 Kw
额定转矩 RATED TORQUE	4.2 Nm	5.4 Nm	6.4 Nm	7.5 Nm
额定转速 RATED SPEED	2000 rpm	2000 rpm	2000 rpm	2000 rpm
最高转速 MAXIMUM SPEED	3000 rpm	3000 rpm	3000 rpm	3000 rpm
额定电流 RATED CURRENT	4.5A	5.5 A	6.5 A	8.0 A
转子惯量 ROTOR INERTIA	0.787 Kg $m^2 \times 10^{-3}$ (0.851Kg $m^2 \times 10^{-3}$)	0.916 Kg $m^2 \times 10^{-3}$ (0.98 Kg $m^2 \times 10^{-3}$)	1.061 Kg $m^2 \times 10^{-3}$ (1.125 Kg $m^2 \times 10^{-3}$)	1.238 Kg $m^2 \times 10^{-3}$ (1.302 Kg $m^2 \times 10^{-3}$)
机械时间常数 MECHANICAL CONSTANT TIME	1.752ms	1.396 ms	1.283 ms	1.266 ms
最大转矩 MAX TORQUE	12.6 Nm	16.2 Nm	19.2 Nm	22.5 Nm

● 110 机座 (2500rpm/4000rpm、3000rpm/4000rpm)

FRAME

电机型号 MOTOR TYPE	110ST-M0423040L _{DD}	110ST-M0543040L _{DD}	110ST-M0642540L _{DD}
额定功率 RATED POWER	1.3 Kw	1.7 Kw	1.7 Kw
额定转矩 RATED TORQUE	4.2 Nm	5.4 Nm	6.4 Nm
额定转速 RATED SPEED	3000 rpm	3000 rpm	2500 rpm
最高转速 MAXIMUM SPEED	4000 rpm	4000 rpm	4000 rpm
额定电流 RATED CURRENT	6.5A	8.2 A	9.5 A
转子惯量 ROTOR INERTIA	0.787 Kg $m^2 \times 10^{-3}$ (0.851Kg $m^2 \times 10^{-3}$)	0.916 Kg $m^2 \times 10^{-3}$ (0.98 Kg $m^2 \times 10^{-3}$)	1.061 Kg $m^2 \times 10^{-3}$ (1.125 Kg $m^2 \times 10^{-3}$)
机械时间常数 MECHANICAL CONSTANT TIME	1.737ms	1.588 ms	1.422 ms
最大转矩 MAX TORQUE	12.6 Nm	16.2 Nm	19.2 Nm

括号内为带失电制动器的转子惯量。

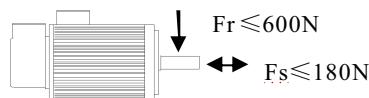
Rotor moment of inertia with power-off brake in brackets.

□ 编码器代码

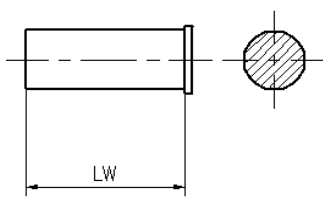
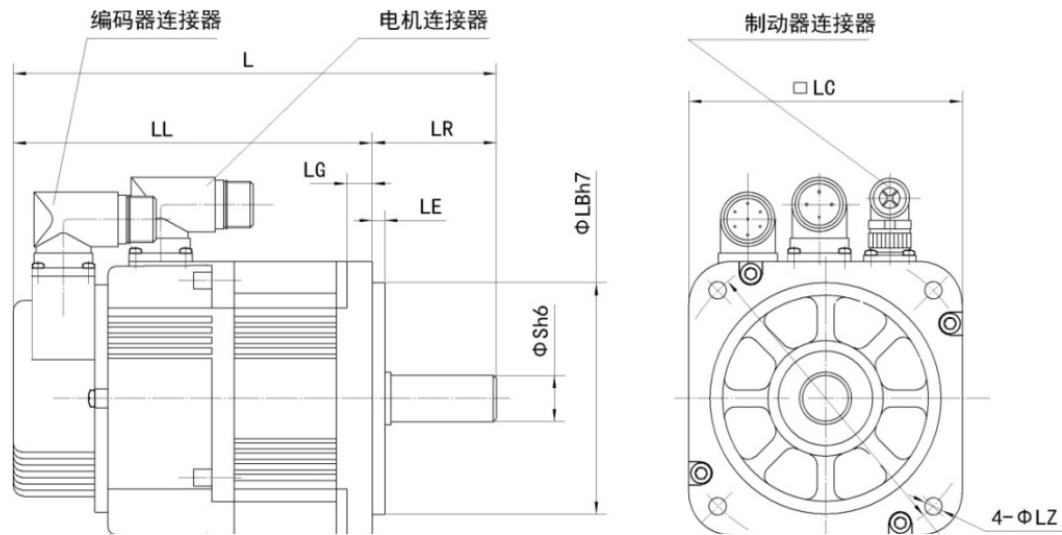
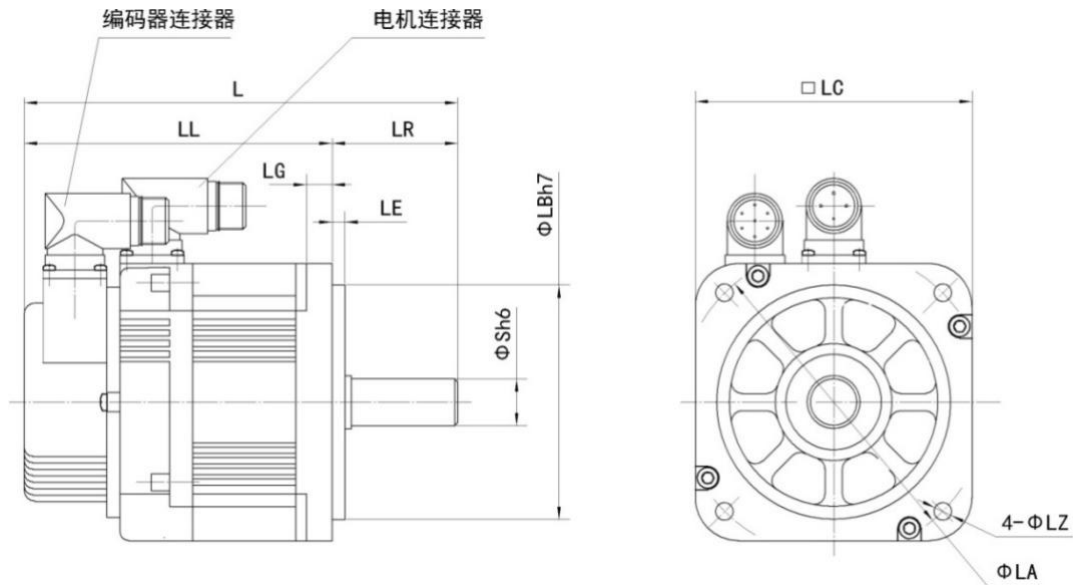
Encoder code

最大径、轴向力：

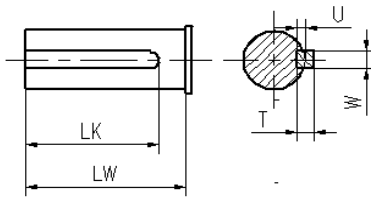
Max diameter/axial force



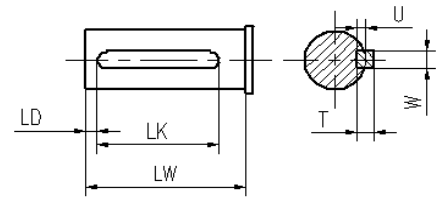
● 安装尺寸



A 型键
KEYS TYPE A



B 型键
KEYS TYPE B



C 型键
KEYS TYPE C

型号	L	LL	LR	LE	LG	LC	LA	LZ	ΦS	LB	T	U	W	LK	LW	LD
110ST-M0422030L□DD 110ST-M0423040L□DD	209 (245)	153 (189)	56	5	12	110	130	9	19 ⁰ _{-0.013}	95 ⁰ _{-0.04}	6	3.5	6	40	48	3
110ST-M0542030L□DD 110ST-M0543040L□DD	219 (255)	163 (199)	56	5	12	110	130	9	19 ⁰ _{-0.013}	95 ⁰ _{-0.04}	6	3.5	6	40	48	3
110ST-M0642030L□DD 110ST-M0643040L□DD	229 (265)	173 (209)	56	5	12	110	130	9	19 ⁰ _{-0.013}	95 ⁰ _{-0.04}	6	3.5	6	40	48	3
110ST-M0752030L□DD	240 (276)	184 (220)	56	5	12	110	130	9	19 ⁰ _{-0.013}	95 ⁰ _{-0.04}	6	3.5	6	40	48	3

注：括号内的数值为带失电制动器的电机长度。

Attention: Rotor moment of inertia with power-off brake in brackets.

● 130 机座 (1500rpm/3000rpm)

FRAME

电机型号 MOTOR TYPE	130ST-M0421530L□DD	130ST-M0541530L□DD	130ST-M0641530L□DD
额定功率 RATED POWER	0.65 Kw	0.85 Kw	1.0 Kw
额定转矩 RATED TORQUE	4.2 Nm	5.4 Nm	6.4 Nm
额定转速 RATED SPEED	1500 rpm	1500 rpm	1500 rpm
最高转速 MAXIMUM SPEED	3000 rpm	3000 rpm	3000 rpm
额定电流 RATED CURRENT	5.5A	6.5 A	8.0 A
转子惯量 ROTOR INERTIA	1.163 Kg $m^2 \times 10^{-3}$ (1.33 Kg $m^2 \times 10^{-3}$)	1.388 Kg $m^2 \times 10^{-3}$ (1.555 Kg $m^2 \times 10^{-3}$)	1.604 Kg $m^2 \times 10^{-3}$ (1.771 Kg $m^2 \times 10^{-3}$)
机械时间常数 MECHANICAL CONSTANT TIME	3.704ms	2.900 ms	2.804 ms
最大转矩 MAX TORQUE	12.6 Nm	16.2 Nm	19.2 Nm

● 130 机座 (1500rpm/3000rpm)

FRAME

电机型号 MOTOR TYPE	130ST-M0751530L□DD	130ST-M0841530L□DD	130ST-M0961530L□DD
额定功率 RATED POWER	1.2 Kw	1.3 Kw	1.5 Kw
额定转矩 RATED TORQUE	7.5 Nm	8.4 Nm	9.6 Nm
额定转速 RATED SPEED	1500 rpm	1500 rpm	1500 rpm
最高转速 MAXIMUM SPEED	3000 rpm	3000 rpm	3000 rpm
额定电流 RATED CURRENT	9.0 A	9.5 A	10.0 A
转子惯量 ROTOR INERTIA	1.857 Kg $m^2 \times 10^{-3}$ (2.024 Kg $m^2 \times 10^{-3}$)	2.059 Kg $m^2 \times 10^{-3}$ (2.226 Kg $m^2 \times 10^{-3}$)	2.369 Kg $m^2 \times 10^{-3}$ (2.536 Kg $m^2 \times 10^{-3}$)
机械时间常数 MECHANICAL CONSTANT TIME	2.409 ms	2.071 ms	2.167 ms
最大转矩 MAX TORQUE	22.5 Nm	25.2 Nm	28.8 Nm

括号内为带失电制动器的转子惯量。

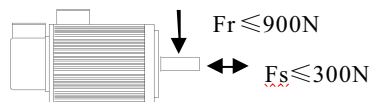
Rotor moment of inertia with power-off brake in brackets.

□编码器代码

Encodercode

最大径、轴向力:

Max diameter/axial force



● 130 机座 (1500rpm/3000rpm)

FRAME

电机型号 MOTOR TYPE	130ST-M1151530L□DD	130ST-M1461530L□DD
额定功率 RATED POWER	1.8 Kw	2.3 Kw
额定转矩 RATED TORQUE	11.5 Nm	14.6 Nm
额定转速 RATED SPEED	1500 rpm	1500 rpm
最高转速 MAXIMUM SPEED	3000 rpm	3000 rpm
额定电流 RATED CURRENT	14.0 A	16.0 A
转子惯量 ROTOR INERTIA	3.015 Kg $m^2 \times 10^{-3}$ (3.182 Kg $m^2 \times 10^{-3}$)	4.070 Kg $m^2 \times 10^{-3}$ (4.237 Kg $m^2 \times 10^{-3}$)
机械时间常数 MECHANICAL CONSTANT TIME	2.415 ms	1.875 ms
最大转矩 MAX TORQUE	34.5 Nm	43.8 Nm

● 130 机座 (1500rpm/2000rpm)

FRAME

电机型号 MOTOR TYPE	130ST-M1461520L□DD	130ST-M1781520L□DD
额定功率 RATED POWER	2.3 Kw	2.8 Kw
额定转矩 RATED TORQUE	14.6 Nm	17.8 Nm
额定转速 RATED SPEED	1500 rpm	1500 rpm
最高转速 MAXIMUM SPEED	2000 rpm	2000 rpm
额定电流 RATED CURRENT	11.0 A	19.0 A
转子惯量 ROTOR INERTIA	4.070 Kg $m^2 \times 10^{-3}$ (4.237 Kg $m^2 \times 10^{-3}$)	4.548 Kg $m^2 \times 10^{-3}$ (4.715 Kg $m^2 \times 10^{-3}$)
机械时间常数 MECHANICAL CONSTANT TIME	1.553 ms	1.575 ms
最大转矩 MAX TORQUE	43.8 Nm	53.4 Nm

括号内为带失电制动器的转子惯量。

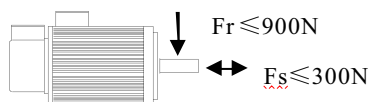
Rotor moment of inertia with power-off brake in brackets.

□编码器代码

Encoder code

最大径、轴向力：

Max diameter/axial force



● 130 机座 (3000rpm/4000rpm)

FRAME

电机型号 MOTOR TYPE	130ST-M0423040L _{DD}	130ST-M0543040L _{DD}
额定功率 RATED POWER	1.3 Kw	1.7 Kw
额定转矩 RATED TORQUE	4.2 Nm	5.4 Nm
额定转速 RATED SPEED	3000 rpm	3000 rpm
最高转速 MAXIMUM SPEED	4000 rpm	4000 rpm
额定电流 RATED CURRENT	7.0 A	9.5 A
转子惯量 ROTOR INERTIA	1.163 Kg $m^2 \times 10^{-3}$ (1.33 Kg $m^2 \times 10^{-3}$)	1.388 Kg $m^2 \times 10^{-3}$ (1.555 Kg $m^2 \times 10^{-3}$)
机械时间常数 MECHANICAL CONSTANT TIME	3.270 ms	2.806 ms
最大转矩 MAX TORQUE	12.6 Nm	16.2 Nm

● 130 机座 (3000rpm/4000rpm)

FRAME

电机型号 MOTOR TYPE	130ST-M0643040L _{DD}	130ST-M0753040L _{DD}	130ST-M0843040L _{DD}
额定功率 RATED POWER	2.0 Kw	2.4 Kw	2.6 Kw
额定转矩 RATED TORQUE	6.4 Nm	7.5 Nm	8.4 Nm
额定转速 RATED SPEED	3000 rpm	3000 rpm	3000 rpm
最高转速 MAXIMUM SPEED	4000 rpm	4000 rpm	4000 rpm
额定电流 RATED CURRENT	11.5 A	12.0 A	13.5 A
转子惯量 ROTOR INERTIA	1.604 Kg $m^2 \times 10^{-3}$ (1.771 Kg $m^2 \times 10^{-3}$)	1.857 Kg $m^2 \times 10^{-3}$ (2.024 Kg $m^2 \times 10^{-3}$)	2.369 Kg $m^2 \times 10^{-3}$ (2.536 Kg $m^2 \times 10^{-3}$)
机械时间常数 MECHANICAL CONSTANT TIME	2.544 ms	2.068 ms	2.19 ms
最大转矩 MAX TORQUE	19.2 Nm	22.5 Nm	25.2 Nm

括号内为带失电制动器的转子惯量。

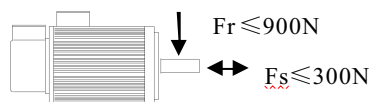
Rotor moment of inertia with power-off brake in brackets.

□ 编码器代码

Encoder code

最大径、轴向力：

Max diameter/axial force



● 130 机座 (2500rpm、2000rpm/4000rpm)

FRAME

电机型号 MOTOR TYPE	130ST-M0962540LDD	130ST-M1152040LDD	130ST-M1462040LDD
额定功率 RATED POWER	2.5 Kw	2.4 Kw	3.1 Kw
额定转矩 RATED TORQUE	9.6 Nm	11.5 Nm	14.6 Nm
额定转速 RATED SPEED	2500 rpm	2000 rpm	2000 rpm
最高转速 MAXIMUM SPEED	4000 rpm	4000 rpm	4000 rpm
额定电流 RATED CURRENT	16.0 A	17.8 A	23.0 A
转子惯量 ROTOR INERTIA	3.015 Kg $m^2 \times 10^{-3}$ (3.182 Kg $m^2 \times 10^{-3}$)	4.070 Kg $m^2 \times 10^{-3}$ (4.237 Kg $m^2 \times 10^{-3}$)	4.548 Kg $m^2 \times 10^{-3}$ (4.715 Kg $m^2 \times 10^{-3}$)
机械时间常数 MECHANICAL CONSTANT TIME	2.010 ms	1.814 ms	1.700 ms
最大转矩 MAX TORQUE	28.8 Nm	34.5 Nm	43.8 Nm

括号内为带失电制动器的转子惯量。

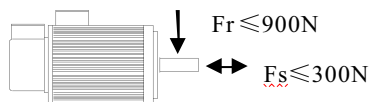
Rotor moment of inertia with power-off brake in brackets.

□ 编码器代码

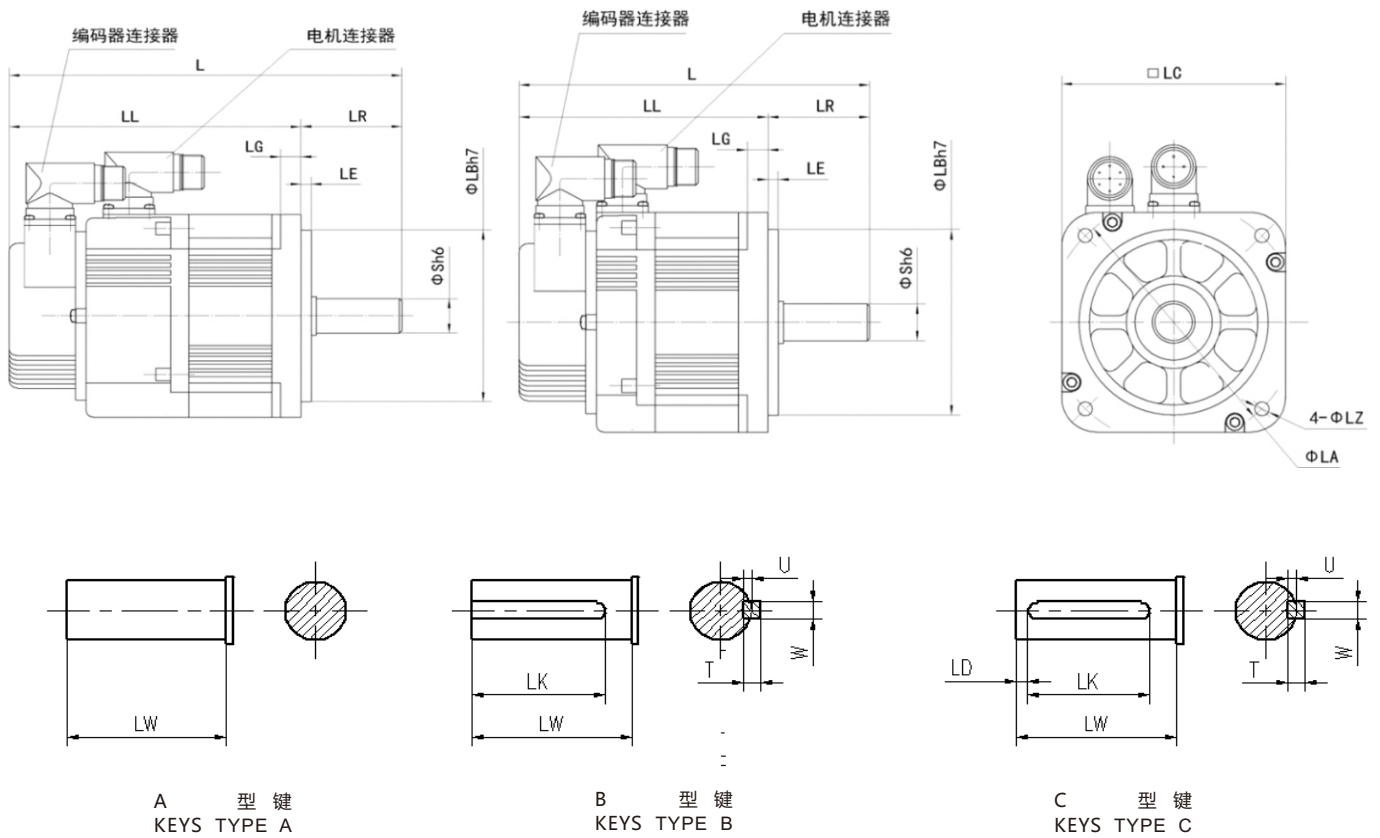
Encoder code

最大径、轴向力:

Max diameter/axial force



● 安装尺寸



型号	L	LL	LR	LE	LG	LC	LA	LZ	ΦS	LB	T	U	W	LK	LW	LD
130ST-M0421530L□DD 130ST-M0423040L□DD	198 (225)	139 (166)	59	6	12	130	145	8.5	22 ⁰ _{-0.013}	110 ⁰ _{-0.04}	6	3.5	6	40	50	5
130ST-M0541530L□DD 130ST-M0543040L□DD	204 (231)	145 (172)	59	6	12	130	145	8.5	22 ⁰ _{-0.013}	110 ⁰ _{-0.04}	6	3.5	6	40	50	5
130ST-M0641530L□DD 130ST-M0643040L□DD	211 (238)	152 (178)	59	6	12	130	145	8.5	22 ⁰ _{-0.013}	110 ⁰ _{-0.04}	6	3.5	6	40	50	5
130ST-M0751530L□DD 130ST-M0753040L□DD	218 (245)	159 (186)	59	6	12	130	145	8.5	22 ⁰ _{-0.013}	110 ⁰ _{-0.04}	6	3.5	6	40	50	5
130ST-M0841530L□DD	224 (251)	165 (192)	59	6	12	130	145	8.5	22 ⁰ _{-0.013}	110 ⁰ _{-0.04}	6	3.5	6	40	50	5
130ST-M0843040L□DD 130ST-M0961530L□DD	232 (259)	173 (200)	59	6	12	130	145	8.5	22 ⁰ _{-0.013}	110 ⁰ _{-0.04}	6	3.5	6	40	50	5
130ST-M0962540L□DD 130ST-M1151530L□DD	251 (278)	192 (219)	59	6	12	130	145	8.5	22 ⁰ _{-0.013}	110 ⁰ _{-0.04}	6	3.5	6	40	50	5
130ST-M1152040L□DD 130ST-M1461520L□DD 130ST-M1461530L□DD	283 (310)	224 (251)	59	6	12	130	145	8.5	22 ⁰ _{-0.013}	110 ⁰ _{-0.04}	6	3.5	6	40	50	5
130ST-M1462040L□DD 130ST-M1781520L□DD	304 (331)	245 (272)	59	6	12	130	145	8.5	22 ⁰ _{-0.013}	110 ⁰ _{-0.04}	6	3.5	6	40	50	5

注：括号内的数值为带失电制动器的电机长度。

Attention: Rotor moment of inertia with power-off brake in brackets.

特点 FEATURES

机座 (mm) : 110、130、150、180
FRAME SIZE
额定转速(rpm): 1500、2000、2500、3000
RATED SPEED
失电制动器: 选配
ELECTRIC LOSS BRAKE
绝缘等级: B
INSULATION GRADE
安装方式: 法兰盘
INSTALLATION METHOD
环境温度: 0~55°C
ENVIRONMENT TEMPERATURE

额定转矩 (Nm) : 2.0~55.0
RATED TORQUE
额定功率(Kw): 0.6~8.6
RATED POWER
极对数: 4
POLES
防护等级: 密封自冷式IP65
PROTECTION CLASS
适配驱动器工作电压 (VAC) : 380
MATCHED DRIVER
环境湿度: < 90% (无结露)
ENVIRONMENT HUMIDITY

HB系列伺服电机命名规则 HB PRODUCTS CODE SPECIFICATION

110	ST	-	M	020	30	H	F1	B	Z	/C
(1)	(2)		(3)	(4)	(5)	(6)	(7)	(8)	(9)	(10)

- | | | |
|------------------------------------------------------------------------|-----------------------------------------------------------------------|--------------------------------------------------------|
| (1) 机座号
FRAME SIZE | (2) 交流永磁同步伺服电机
AC PERMANENT MAGNET | (3) 反馈元件类型
FEEDBACK COMPONENTS TYPE |
| (4) 额定转矩: 三位数 × 0.1Nm
RATED TORQUE: THE THREE-DIGIT NUMBER×0.1NM | (5) 额定转速: 二位数×100rpm
RATED SPEED: THE DOUBLE-DIGITAL NUMBER×100RPM | (6) 驱动器工作电压 (VAC) : 380
DRIVER WORKING VOLTAGE CODE |
| (7) 编码器代码
ENCODER CODE | (8) 中惯量
MEDIUM INERTIA | (9) 安装了失电制动器
WITH THE POWER-OFF BRAKE |
| (10) 轴伸端键槽代码, 无键无代码
THE SHAFT END KEYWAY CODE, NO CODE MEANS NO KEY | | |

HB系列一览表 HB SERIES LIST

电机型号 MOTOR TYPE	主要参数 TECHNICAL PARAMETERS			
	额定转矩 RATED TORQUE	额定转速 RATED SPEED	额定电流 RATED CURRENT	额定功率 RATED POWER
110ST-M02030H□B	2.0 Nm	3000 rpm	3.0 A	0.6 Kw
110ST-M04030H□B	4.0 Nm	3000 rpm	4.0 A	1.2 Kw
110ST-M05030H□B	5.0 Nm	3000 rpm	4.5 A	1.5 Kw
110ST-M06020H□B	6.0 Nm	2000 rpm	3.5 A	1.2 Kw
110ST-M06030H□B	6.0 Nm	3000 rpm	5.0 A	1.6 Kw
130ST-M04025H□B	4.0 Nm	2500 rpm	3.0 A	1.0 Kw
130ST-M05020H□B	5.0 Nm	2000 rpm	3.0 A	1.0 Kw
130ST-M05025H□B	5.0 Nm	2500 rpm	3.5 A	1.3 Kw
130ST-M06025H□B	6.0 Nm	2500 rpm	4.5 A	1.5 Kw
130ST-M07720H□B	7.7 Nm	2000 rpm	4.0 A	1.6 Kw
130ST-M07725H□B	7.7 Nm	2500 rpm	5.5 A	2.0 Kw
130ST-M07730H□B	7.7 Nm	3000 rpm	6.5 A	2.4 Kw
130ST-M10015H□B	10.0 Nm	1500 rpm	4.5 A	1.5 Kw
130ST-M10025H□B	10.0 Nm	2500 rpm	7.0 A	2.6 Kw
130ST-M15015H□B	15.0 Nm	1500 rpm	7.0 A	2.3 Kw
130ST-M15025H□B	15.0 Nm	2500 rpm	11.5 A	3.8 Kw
150ST-M15025H□B	15.0 Nm	2500 rpm	10.0 A	3.8 Kw
150ST-M18020H□B	18.0 Nm	2000 rpm	10.5 A	3.6 Kw
150ST-M23020H□B	23.0 Nm	2000 rpm	13.5 A	4.7 Kw
150ST-M27020H□B	27.0 Nm	2000 rpm	13.5 A	5.5 Kw
180ST-M18020H□B	18.0 Nm	2000 rpm	10.0 A	3.6 Kw
180ST-M23020H□B	23.0 Nm	2000 rpm	13.5 A	4.7 Kw
180ST-M27020H□B	27.0 Nm	2000 rpm	13.5 A	5.5 Kw
180ST-M36015H□B	36.0 Nm	1500 rpm	14.0 A	5.6 Kw
180ST-M45015H□B	45.0 Nm	1500 rpm	16.5 A	7.0 Kw
180ST-M55015H□B	55.0 Nm	1500 rpm	20.5 A	8.6 Kw

□编码器代码
Encoder code

● 110 机座 (2000rpm、3000rpm)

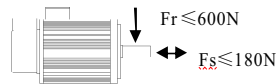
FRAME

电机型号 MOTOR TYPE	110ST-M02030H□B	110ST-M04030H□B	110ST-M05030H□B	110ST-M06020H□B	110ST-M06030H□B
额定功率 RATED POWER	0.6 Kw	1.2 Kw	1.5Kw	1.2 Kw	1.8 Kw
额定转矩 RATED TORQUE	2.0 Nm	4.0 Nm	5.0 Nm	6.0 Nm	6.0 Nm
额定转速 RATED SPEED	3000 rpm	3000 rpm	3000 rpm	2000 rpm	3000 rpm
额定电流 RATED CURRENT	3.0 A	4.0 A	4.5 A	3.5 A	5.0 A
转子惯量 ROTOR INERTIA	0.413×10 ⁻³ Kg·m ² (0.477×10 ⁻³ Kg·m ²)	0.693×10 ⁻³ Kg·m ² (0.757×10 ⁻³ Kg·m ²)	0.856×10 ⁻³ Kg·m ² (0.92×10 ⁻³ Kg·m ²)	1.029×10 ⁻³ Kg·m ² (1.093×10 ⁻³ Kg·m ²)	1.029×10 ⁻³ Kg·m ² (1.093×10 ⁻³ Kg·m ²)
机械时间常数 MECHANICAL CONSTANT TIME	6.979 ms	3.682 ms	2.594 ms	2.174 ms	1.942 ms
最大转矩 MAX TORQUE	6.0 Nm	12.0 Nm	15.0 Nm	18.0 Nm	18.0 Nm

括号内为带失电制动器的转子惯量。
Rotor moment of inertia with power-off brake in brackets.

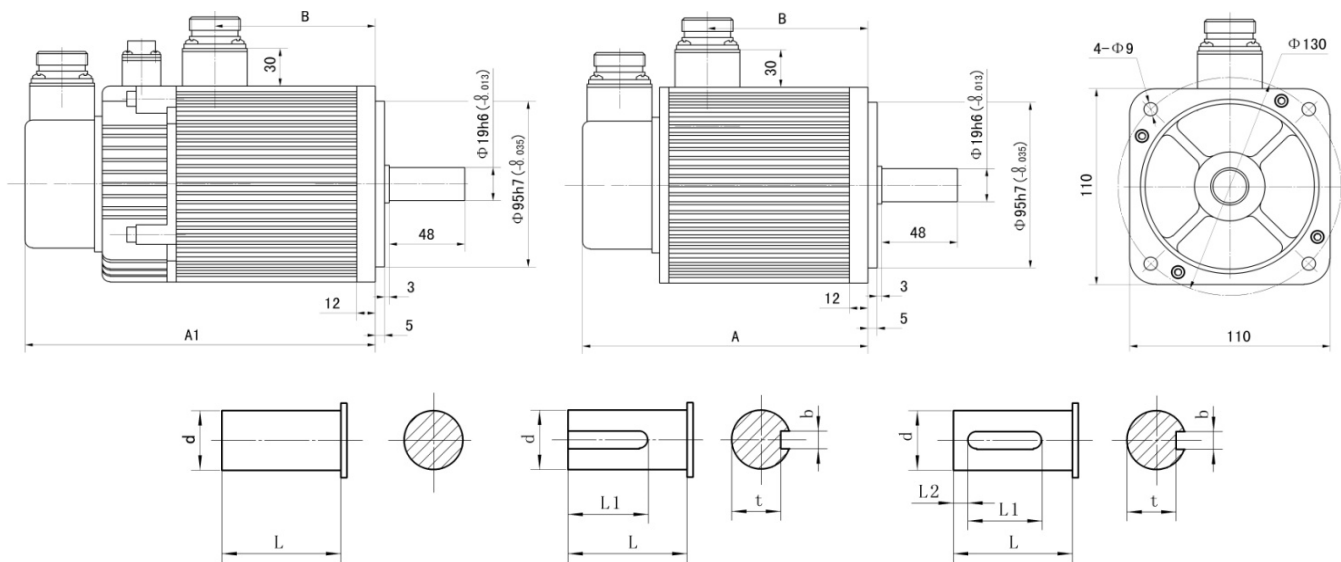
最大径、轴向力：
Max diameter/axial force

□ 编码器代码
Encoder code



尺寸图

DIMENSIONAL DRAWING



A 型键
KEYS TYPE A

B 型键
KEYS TYPE B

C 型键
KEYS TYPE C

型号	A (mm)	A1 (mm)	B (mm)	L (mm)	L1 (mm)	L2 (mm)	d (mm)	b (mm)	t (mm)
110ST-M02030H□B	158	200	76	48	40	3	Φ19 ⁰ _{-0.013}	6 ⁰ _{-0.03}	15.5 ⁰ _{-0.1}
110ST-M04030H□B	185	227	102	48	40	3	Φ19 ⁰ _{-0.013}	6 ⁰ _{-0.03}	15.5 ⁰ _{-0.1}
110ST-M05030H□B	200	242	118	48	40	3	Φ19 ⁰ _{-0.013}	6 ⁰ _{-0.03}	15.5 ⁰ _{-0.1}
110ST-M06020H□B 110ST-M06030H□B	217	259	134	48	40	3	Φ19 ⁰ _{-0.013}	6 ⁰ _{-0.03}	15.5 ⁰ _{-0.1}

● 130机座 (2500rpm/2500rpm)

FRAME

电机型号 MOTOR TYPE	130ST-M04025H□B	130ST-M05020H□B	130ST-M05025H□B	130ST-M06025H□B
额定功率 RATED POWER	1.0 Kw	1.0 Kw	1.3 Kw	1.5 Kw
额定转矩 RATED TORQUE	4.0 Nm	5.0 Nm	5.0 Nm	6.0 Nm
额定转速 RATED SPEED	2500 rpm	2000 rpm	2500 rpm	2500 rpm
额定电流 RATED CURRENT	3.0 A	3.0 A	3.5 A	4.5 A
转子惯量 ROTOR INERTIA	1.04×10 ⁻³ Kg·m ² (1.207×10 ⁻³ Kg·m ²)	1.337×10 ⁻³ Kg·m ² (1.504×10 ⁻³ Kg·m ²)	1.337×10 ⁻³ Kg·m ² (1.504×10 ⁻³ Kg·m ²)	1.556×10 ⁻³ Kg·m ² (1.723×10 ⁻³ Kg·m ²)
机械时间常数 MECHANICAL CONSTANT TIME	4.894 ms	3.718 ms	3.934 ms	4.014 ms
最大转矩 MAX TORQUE	12.0 Nm	15.0 Nm	15.0 Nm	18.0 Nm

括号内为带失电制动器的转子惯量。

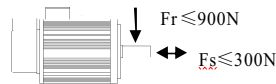
Rotor moment of inertia with power-off brake in brackets.

□ 编码器代码

Encoder code

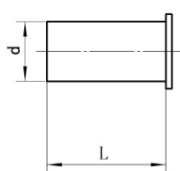
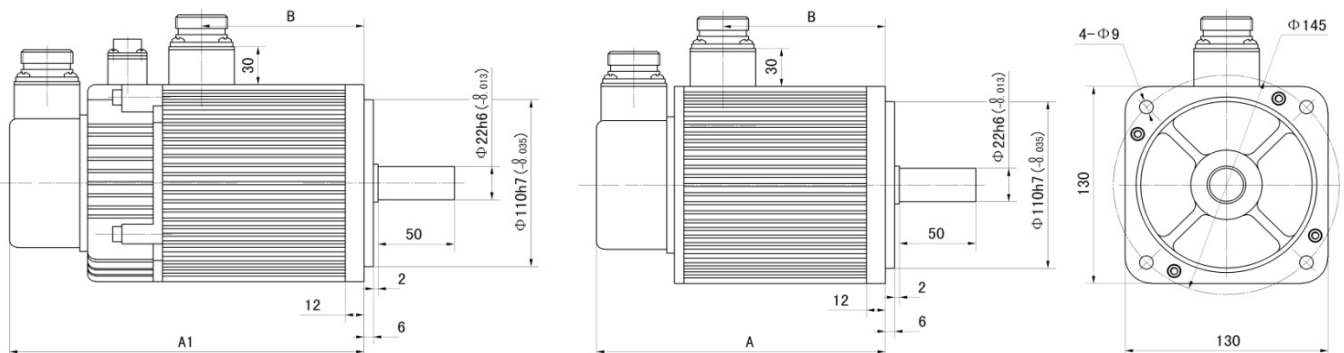
最大径、轴向力：

Max diameter/axial force

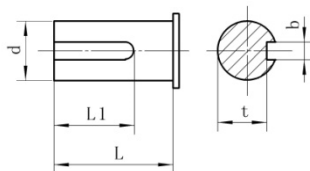


尺寸图

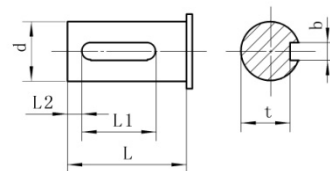
DIMENSIONAL DRAWING



A 型键
KEYS TYPE A



B 型键
KEYS TYPE B



C 型键
KEYS TYPE C

型号	A (mm)	A1 (mm)	B (mm)	L (mm)	L1 (mm)	L2 (mm)	d (mm)	b (mm)	t (mm)
130ST-M04025H□B	163	205	80	50	40	5	Φ22 ⁰ _{-0.013}	6 ⁰ _{-0.03}	18.5 ⁰ _{-0.1}
130ST-M05020H□B 130ST-M05025H□B	171	213	89	50	40	5	Φ22 ⁰ _{-0.013}	6 ⁰ _{-0.03}	18.5 ⁰ _{-0.1}
130ST-M06025H□B	181	223	98	50	40	5	Φ22 ⁰ _{-0.013}	6 ⁰ _{-0.03}	18.5 ⁰ _{-0.1}

● 130机座 (1500rpm、2000rpm、2500rpm、3000rpm)

FRAME

电机型号 MOTOR TYPE	130ST-M07720H□B	130ST-M07725H□B	130ST-M07730H□B	130ST-M10015H□B
额定功率 RATED POWER	1.6 Kw	2.0 Kw	2.4 Kw	1.5 Kw
额定转矩 RATED TORQUE	7.7 Nm	7.7 Nm	7.7 Nm	10.0 Nm
额定转速 RATED SPEED	2000 rpm	2500 rpm	3000 rpm	1500 rpm
额定电流 RATED CURRENT	4.0 A	5.5 A	6.5 A	4.5 A
转子惯量 ROTOR INERTIA	1.959×10 ⁻³ Kg ^m ² (2.126×10 ⁻³ Kg ^m ²)	1.959×10 ⁻³ Kg ^m ² (2.126×10 ⁻³ Kg ^m ²)	1.959×10 ⁻³ Kg ^m ² (2.126×10 ⁻³ Kg ^m ²)	2.539×10 ⁻³ Kg ^m ² (2.706×10 ⁻³ Kg ^m ²)
机械时间常数 MECHANICAL CONSTANT TIME	2.115 ms	2.490 ms	2.157 ms	2.669 ms
最大转矩 MAX TORQUE	23.1 Nm	23.1 Nm	23.1 Nm	30.0 Nm

括号内为带失电制动器的转子惯量。

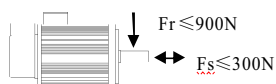
Rotor moment of inertia with power-off brake in brackets.

□ 编码器代码

Encoder code

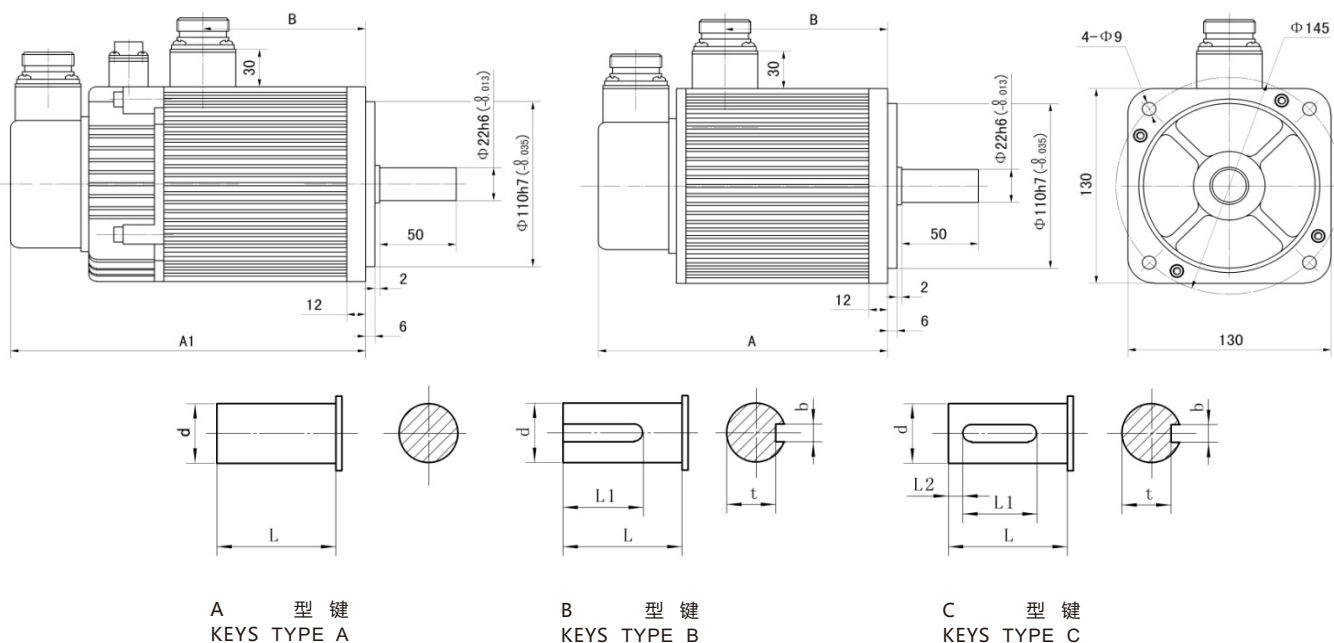
最大径、轴向力：

Max diameter/axial force



尺寸图

DIMENSIONAL DRAWING



型号	A (mm)	A1 (mm)	B (mm)	L (mm)	L1 (mm)	L2 (mm)	d (mm)	b (mm)	t (mm)
130ST-M07720H□B 130ST-M07725H□B 130ST-M07730H□B	195	237	112	50	40	5	Φ22 ⁰ _{-0.013}	6 ⁰ _{-0.03}	18.5 ⁰ _{-0.1}
130ST-M10015H□B	219	261	136	50	40	5	Φ22 ⁰ _{-0.013}	6 ⁰ _{-0.03}	18.5 ⁰ _{-0.1}

● 130机座 (1500rpm、2500rpm)

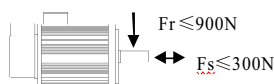
FRAME

电机型号 MOTOR TYPE	130ST-M10025H□B	130ST-M15015H□B	130ST-M15025H□B
额定功率 RATED POWER	2.6 Kw	2.3 Kw	3.9Kw
额定转矩 RATED TORQUE	10.0 Nm	15.0 Nm	15.0Nm
额定转速 RATED SPEED	2500 rpm	1500 rpm	2500 rpm
额定电流 RATED CURRENT	7.0 A	7.0 A	11.5 A
转子惯量 ROTOR INERTIA	2.539×10 ⁻³ Kg·m ² (2.706×10 ⁻³ Kg·m ²)	2.914×10 ⁻³ Kg·m ² (3.081×10 ⁻³ Kg·m ²)	2.914×10 ⁻³ Kg·m ² (3.081×10 ⁻³ Kg·m ²)
机械时间常数 MECHANICAL CONSTANT TIME	2.376 ms	1.350 ms	1.218 ms
最大转矩 MAX TORQUE	30.0 Nm	45.0 Nm	45.0 Nm

括号内为带失电制动器的转子惯量。
Rotor moment of inertia with power-off brake in brackets.

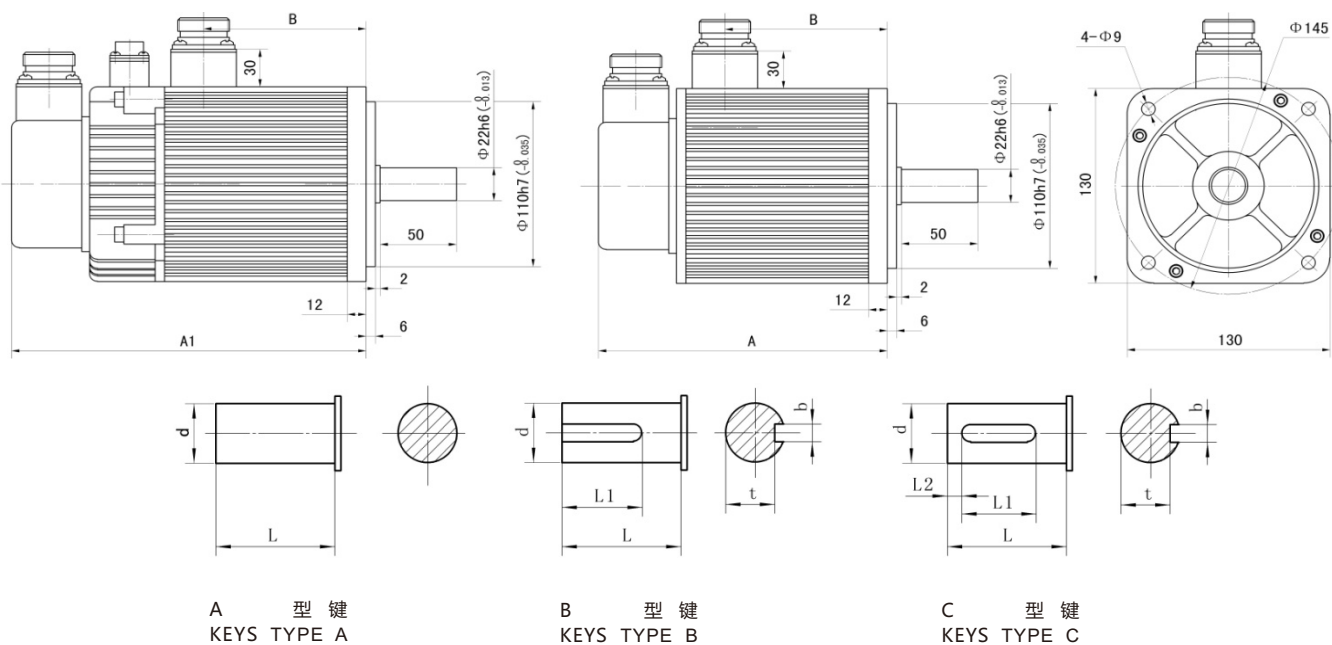
□ 编码器代码
Encoder code

最大径、轴向力：
Max diameter/axial force



尺寸图

DIMENSIONAL DRAWING



型号	A (mm)	A1 (mm)	B (mm)	L (mm)	L1 (mm)	L2 (mm)	d (mm)	b (mm)	t (mm)
130ST-M10025H□B	219	261	136	50	40	5	$\Phi 22_{-0.013}^0$	$6_{-0.03}^0$	$18.5_{-0.1}^0$
130ST-M15015H□B 130ST-M15025H□B	267	309	184	50	40	5	$\Phi 22_{-0.013}^0$	$6_{-0.03}^0$	$18.5_{-0.1}^0$

● 150机座 (2000rpm、2500rpm)

FRAME

电机型号 MOTOR TYPE	150ST-M15025H□B	150ST-M18020H□B	150ST-M23020H□B	150ST-M27020H□B
额定功率 RATED POWER	3.8 Kw	3.6 Kw	4.7 Kw	5.5 Kw
额定转矩 RATED TORQUE	15.0 Nm	18.0 Nm	23.0 Nm	27.0 Nm
额定转速 RATED SPEED	2500 rpm	2000 rpm	2000 rpm	2000 rpm
额定电流 RATED CURRENT	11.5A	10.5 A	13.5 A	13.5 A
转子惯量 ROTOR INERTIA	4.609×10 ⁻³ Kg ^m ² (5.209×10 ⁻³ Kg ^m ²)	6.222×10 ⁻³ Kg ^m ² (6.6×10 ⁻³ Kg ^m ²)	8.345×10 ⁻³ Kg ^m ² (8.945×10 ⁻³ Kg ^m ²)	9.871×10 ⁻³ Kg ^m ² (10.471×10 ⁻³ Kg ^m ²)
机械时间常数 MECHANICAL CONSTANT TIME	1.941ms	2.07 ms	1.909 ms	2.564 ms
最大转矩 MAX TORQUE	45.0 Nm	54.0 Nm	69.0 Nm	81.0 Nm

括号内为带失电制动器的转子惯量。

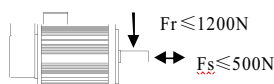
Rotor moment of inertia with power-off brake in brackets.

□ 编码器代码

Encoder code

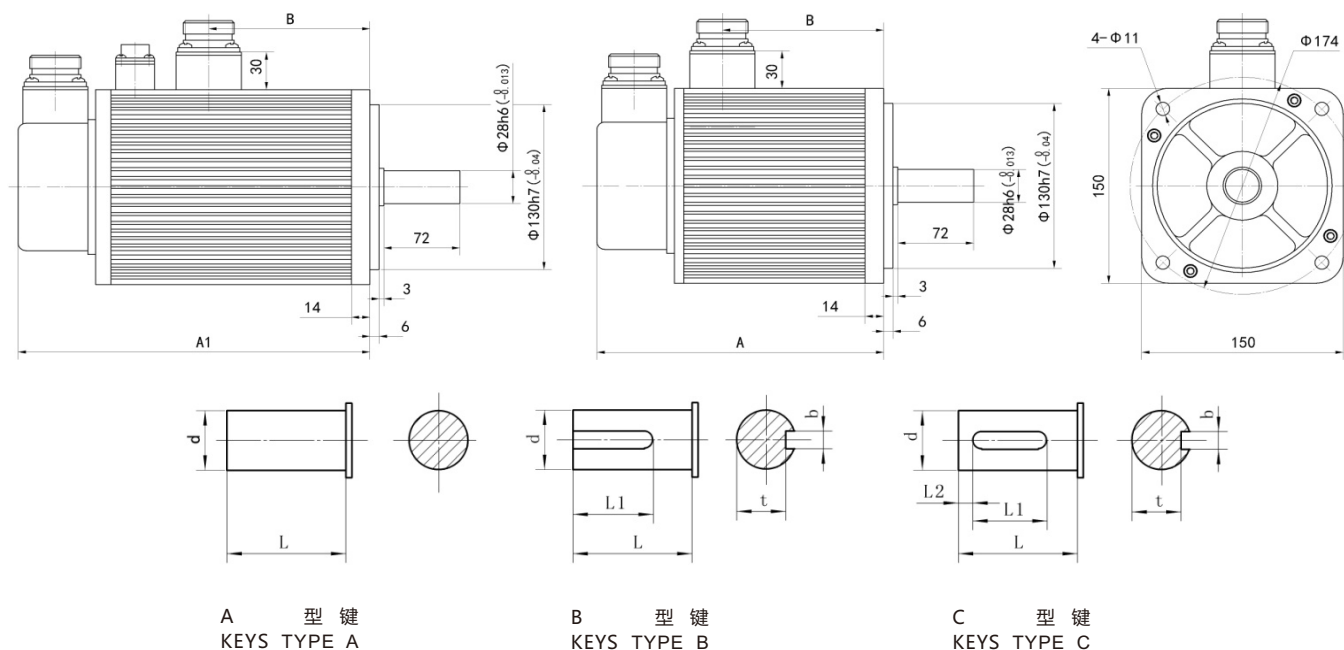
最大径、轴向力：

Max diameter/axial force



尺寸图

DIMENSIONAL DRAWING



型号	A (mm)	A1 (mm)	B (mm)	L (mm)	L1 (mm)	L2 (mm)	d (mm)	b (mm)	t (mm)
150ST-M15025H□B	231	293	146	72	60 (B型) 55 (C型)	5	Φ28 ⁰ _{-0.013}	8 ⁰ _{-0.03}	24 ⁰ _{-0.1}
150ST-M18020H□B	250	312	166	72	60 (B型) 55 (C型)	5	Φ28 ⁰ _{-0.013}	8 ⁰ _{-0.03}	24 ⁰ _{-0.1}
150ST-M23020H□B	280	342	196	72	60 (B型) 55 (C型)	5	Φ28 ⁰ _{-0.013}	8 ⁰ _{-0.03}	24 ⁰ _{-0.1}
150ST-M27020H□B	306	368	222	72	60 (B型) 55 (C型)	5	Φ28 ⁰ _{-0.013}	8 ⁰ _{-0.03}	24 ⁰ _{-0.1}

● 180机座 (2000rpm)

FRAME

电机型号 MOTOR TYPE	180ST-M18020H□B	180ST-M23020H□B	180ST-M27020H□B
额定功率 RATED POWER	3.6 Kw	4.7 Kw	5.5 Kw
额定转矩 RATED TORQUE	18.0 Nm	23.0 Nm	27.0 Nm
额定转速 RATED SPEED	2000 rpm	2000 rpm	2000 rpm
额定电流 RATED CURRENT	10.0 A	13.5 A	13.5 A
转子惯量 ROTOR INERTIA	$5.326 \times 10^{-3} \text{ Kg} \cdot \text{m}^2$ ($5.926 \times 10^{-3} \text{ Kg} \cdot \text{m}^2$)	$6.628 \times 10^{-3} \text{ Kg} \cdot \text{m}^2$ ($7.228 \times 10^{-3} \text{ Kg} \cdot \text{m}^2$)	$7.836 \times 10^{-3} \text{ Kg} \cdot \text{m}^2$ ($8.436 \times 10^{-3} \text{ Kg} \cdot \text{m}^2$)
机械时间常数 MECHANICAL CONSTANT TIME	1.332 ms	1.094 ms	1.352 ms
最大转矩 MAX TORQUE	54.0 Nm	69.0 Nm	81.0 Nm

● 180机座 (1500rpm)

FRAME

电机型号 MOTOR TYPE	180ST-M36015H□B	180ST-M45015H□B	180ST-M55015H□B
额定功率 RATED POWER	5.6 Kw	7.0 Kw	8.6 Kw
额定转矩 RATED TORQUE	36.0 Nm	45.0 Nm	55.0 Nm
额定转速 RATED SPEED	1500 rpm	1500 rpm	1500 rpm
额定电流 RATED CURRENT	14.0 A	16.5 A	20.5 A
转子惯量 ROTOR INERTIA	$9.957 \times 10^{-3} \text{ Kg} \cdot \text{m}^2$ ($10.557 \times 10^{-3} \text{ Kg} \cdot \text{m}^2$)	$11.834 \times 10^{-3} \text{ Kg} \cdot \text{m}^2$ ($12.434 \times 10^{-3} \text{ Kg} \cdot \text{m}^2$)	$13.796 \times 10^{-3} \text{ Kg} \cdot \text{m}^2$ ($14.369 \times 10^{-3} \text{ Kg} \cdot \text{m}^2$)
机械时间常数 MECHANICAL CONSTANT TIME	0.945 ms	0.853 ms	1.008 ms
最大转矩 MAX TORQUE	108.0 Nm	135.0 Nm	165.0 Nm

括号内为带失电制动器的转子惯量。

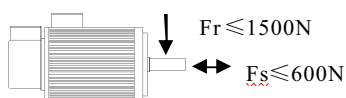
Rotor moment of inertia with power-off brake in brackets.

□编码器代码

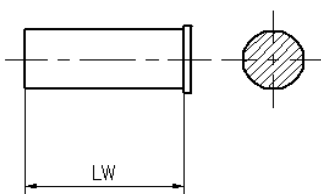
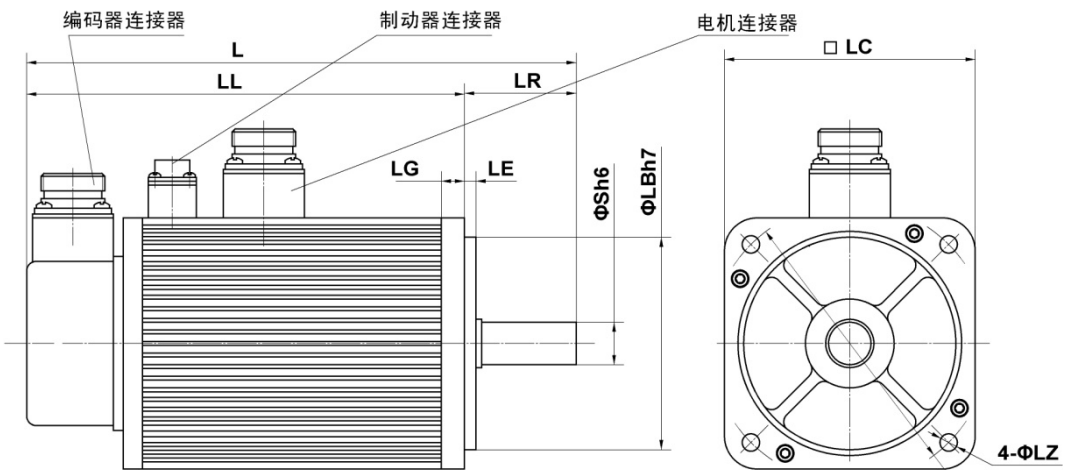
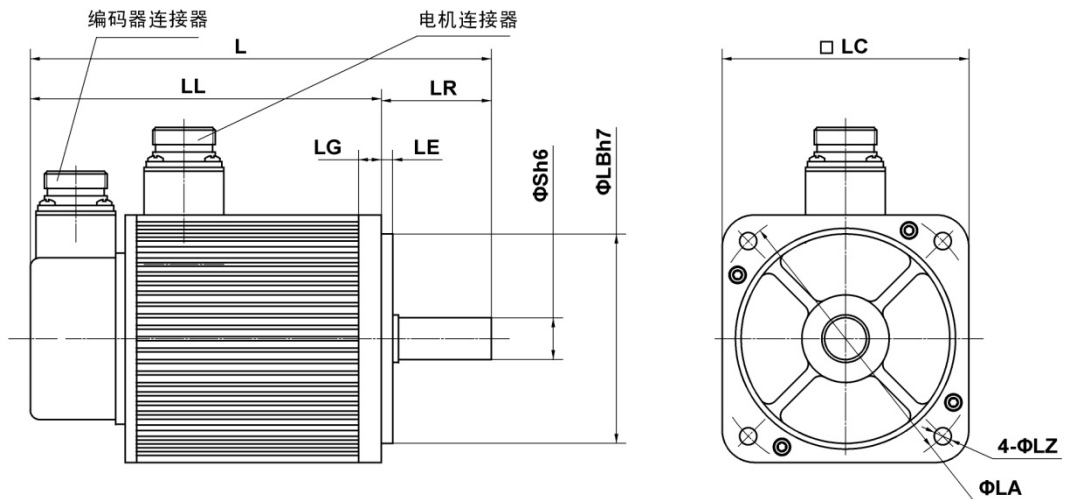
Encoder code

最大径、轴向力：

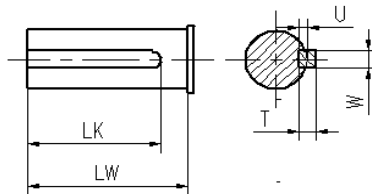
Max diameter/axial force



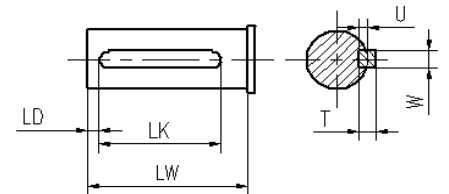
● 安装尺寸



A 型 键
KEYS TYPE A



B 型 键
KEYS TYPE B



C 型 键
KEYS TYPE C

型号	L	LL	LR	LE	LG	LC	LA	LZ	ΦS	LB	T	U	W	LK	LW	LD
180ST-M18020H□B	321 (393)	242 (314)	80 (79)	4	20	180	200	13.5	35 ⁰ _{-0.013}	150 ⁰ _{-0.04}	8	5	10	60	73	5
180ST-M23020H□B	345 (417)	266 (338)	80 (79)	4	20	180	200	13.5	35 ⁰ _{-0.013}	150 ⁰ _{-0.04}	8	5	10	60	73	5
180ST-M27020H□B	365 (437)	286 (358)	80 (79)	4	20	180	200	13.5	35 ⁰ _{-0.013}	150 ⁰ _{-0.04}	8	5	10	60	73	5
180ST-M36015H□B	399 (471)	320 (392)	80 (79)	4	20	180	200	13.5	35 ⁰ _{-0.013}	150 ⁰ _{-0.04}	8	5	10	60	73	5
180ST-M45015H□B	431 (503)	352 (424)	80 (79)	4	20	180	200	13.5	35 ⁰ _{-0.013}	150 ⁰ _{-0.04}	8	5	10	60	73	5
180ST-M55015H□B	463 (535)	384 (456)	80 (79)	4	20	180	200	13.5	35 ⁰ _{-0.013}	150 ⁰ _{-0.04}	8	5	10	60	73	5

注：括号内的数值为带失电制动器的电机长度。
Attention: rotor moment of inertia with power-off brake in brackets.

LB尺寸可选配114.3⁰_{-0.04}小止口

特点 FEATURES

机座 (mm) : 150、180
FRAME SIZE

额定转速(rpm): 1500、2000
RATED SPEED

失电制动器: 选配
ELECTRIC LOSS BRAKE

绝缘等级: B
INSULATION GRADE

安装方式: 法兰盘
INSTALLATION METHOD

环境温度: 0~55°C
ENVIRONMENT TEMPERATURE

额定转矩 (Nm) : 14.6~55.0
RATED TORQUE

最高转速 (rpm) : 3000
MAXIMUM SPEED

额定功率(Kw): 2.3~8.6
RATED POWER

极对数: 4
POLES

防护等级: : 密封自冷式IP65
PROTECTION CLASS

适配驱动器工作电压 (VAC) : 380
MATCHED DRIVER

环境湿度: < 90% (无结露)
ENVIRONMENT HUMIDITY

HBB系列伺服电机命名规则 HBB PRODUCTS CODE SPECIFICATION

<u>150</u>	<u>ST</u>	-	<u>M</u>	<u>048</u>	<u>20</u>	<u>H</u>	<u>M</u>	<u>B</u>	<u>B</u>	<u>Z</u>	<u>/C</u>
(1)	(2)		(3)	(4)	(5)	(6)	(7)	(8)	(9)	(10)	(11)

- | | | |
|---------------------------------------------------------------------|------------------------------------------------------------------------|--------------------------------------------------------|
| (1) 机座号
FRAME SIZE | (2) 交流永磁同步伺服电机
AC PERMANENT MAGNET | (3) 反馈元件类型
FEEDBACK COMPONENTS TYPE |
| (4) 额定转矩: 三位数 × 0.1Nm
RATED TORQUE: THE THREE-DIGIT NUMBER×0.1NM | (5) 额定转速: 二位数×100rpm
RATED SPEED: THE DOUBLE-DIGITAL NUMBER×100RPM | (6) 驱动器工作电压 (VAC) : 380
DRIVER WORKING VOLTAGE CODE |
| (7) 编码器代码
ENCODER CODE | (8) 中惯量
MEDIUM INERTIA | (9) 具有最高转速特性
MAXIMUM SPEED FEATURES |
| (10) 安装了失电制动器
WITH THE POWER-OFF BRAKE | (11) 轴伸端键槽代码, 无键无代码
THE SHAFT END KEYWAY CODE, NO CODE MEANS NO KEY | |

HBB系列一览表 HBB SERIES LIST

电机型号 MOTOR TYPE	主要参数 TECHNICAL PARAMETERS				
	额定转矩 RATED TORQUE	额定转速 RATED SPEED	最高转速 MAXIMUM SPEED	额定电流 RATED CURRENT	额定功率 RATED POWER
150ST-M14615H□BB	14.6 Nm	1500 rpm	3000 rpm	9.0 A	2.3 Kw
150ST-M19115H□BB	19.1 Nm	1500 rpm	3000 rpm	12.0 A	3.0 Kw
150ST-M22315H□BB	22.3 Nm	1500 rpm	3000 rpm	13.0 A	3.5 Kw
150ST-M28715H□BB	28.7 Nm	1500 rpm	3000 rpm	17.0 A	4.5 Kw
150ST-M14320H□BB	14.3 Nm	2000 rpm	3000 rpm	9.0 A	3.0 Kw
150ST-M23920H□BB	23.9 Nm	2000 rpm	3000 rpm	14.0 A	5.0 Kw
150ST-M26320H□BB	26.3 Nm	2000 rpm	3000 rpm	15.5 A	5.5 Kw
180ST-M18020H□BB	18.0 Nm	2000 rpm	3000 rpm	12.5 A	3.6 Kw
180ST-M23020H□BB	23.0 Nm	2000 rpm	3000 rpm	15.0 A	4.7 Kw
180ST-M27020H□BB	27.0 Nm	2000 rpm	3000 rpm	18.0 A	5.5 Kw
180ST-M36015H□BB	36.0 Nm	1500 rpm	3000 rpm	22.5 A	5.6 Kw
180ST-M45015H□BB	45.0 Nm	1500 rpm	3000 rpm	30.0 A	7.0 Kw
180ST-M55015H□BB	55.0 Nm	1500 rpm	3000 rpm	35.0 A	8.6 Kw

● 150机座 (1500rpm/3000rpm)

FRAME

电机型号 MOTOR TYPE	150ST-M14615H□BB	150ST-M19115H□BB	150ST-M22315H□BB	150ST-M28715H□BB
额定功率 RATED POWER	2.3 Kw	3.0 Kw	3.5 Kw	4.5 Kw
额定转矩 RATED TORQUE	14.6 Nm	19.1 Nm	22.3 Nm	28.7 Nm
额定转速 RATED SPEED	1500 rpm	1500 rpm	1500 rpm	1500 rpm
最高转速 MAXIMUM SPEED	3000 rpm	3000 rpm	3000 rpm	3000 rpm
额定电流 RATED CURRENT	9.0 A	12.0 A	13.0 A	17.0 A
转子惯量 ROTOR INERTIA	4.609 Kg $m^2 \times 10^{-3}$ (5.209 Kg $m^2 \times 10^{-3}$)	6.222 Kg $m^2 \times 10^{-3}$ (6.822 Kg $m^2 \times 10^{-3}$)	8.345 Kg $m^2 \times 10^{-3}$ (8.945 Kg $m^2 \times 10^{-3}$)	9.871 Kg $m^2 \times 10^{-3}$ (10.471 Kg $m^2 \times 10^{-3}$)
机械时间常数 MECHANICAL CONSTANT TIME	2.171 ms	1.989 ms	1.975 ms	1.798 ms
最大转矩 MAX TORQUE	43.8 Nm	57.3 Nm	66.9 Nm	86.1 Nm

● 150机座 (2000rpm/3000rpm)

FRAME

电机型号 MOTOR TYPE	150ST-M14320H□BB	150ST-M23920H□BB	150ST-M26320H□BB
额定功率 RATED POWER	3.0 Kw	5.0 Kw	5.5 Kw
额定转矩 RATED TORQUE	14.3 Nm	23.9 Nm	26.3 Nm
额定转速 RATED SPEED	2000 rpm	2000 rpm	2000 rpm
最高转速 MAXIMUM SPEED	3000 rpm	3000 rpm	3000 rpm
额定电流 RATED CURRENT	9.0 A	14.0 A	15.5 A
转子惯量 ROTOR INERTIA	4.609 Kg $m^2 \times 10^{-3}$ (5.209 Kg $m^2 \times 10^{-3}$)	8.345 Kg $m^2 \times 10^{-3}$ (8.945 Kg $m^2 \times 10^{-3}$)	9.871 Kg $m^2 \times 10^{-3}$ (10.471 Kg $m^2 \times 10^{-3}$)
机械时间常数 MECHANICAL CONSTANT TIME	2.223 ms	2.028 ms	1.810 ms
最大转矩 MAX TORQUE	42.9 Nm	71.7 Nm	78.9 Nm

括号内为带失电制动器的转子惯量。

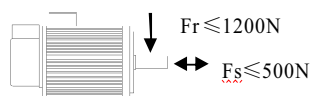
Rotor moment of inertia with power-off brake in brackets.

□编码器代码

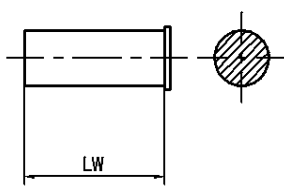
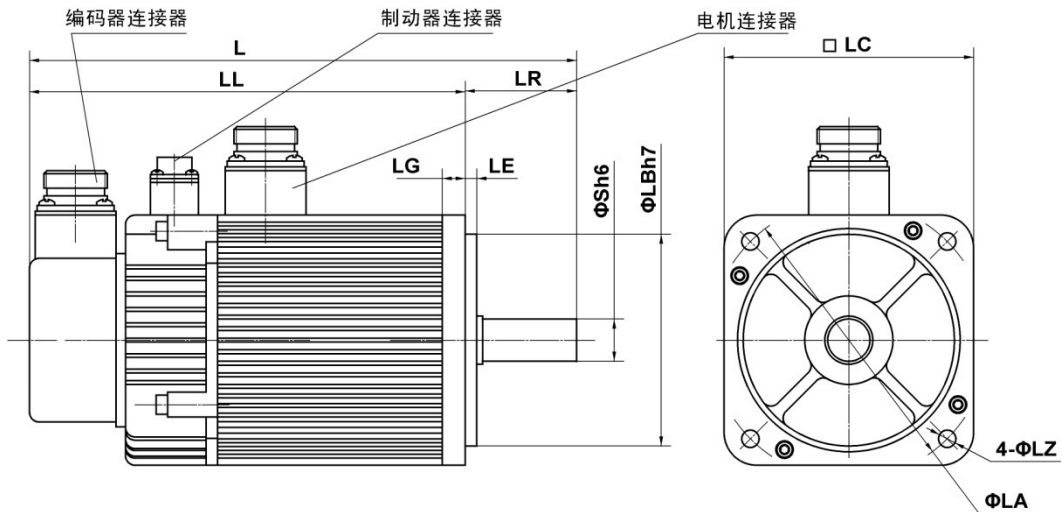
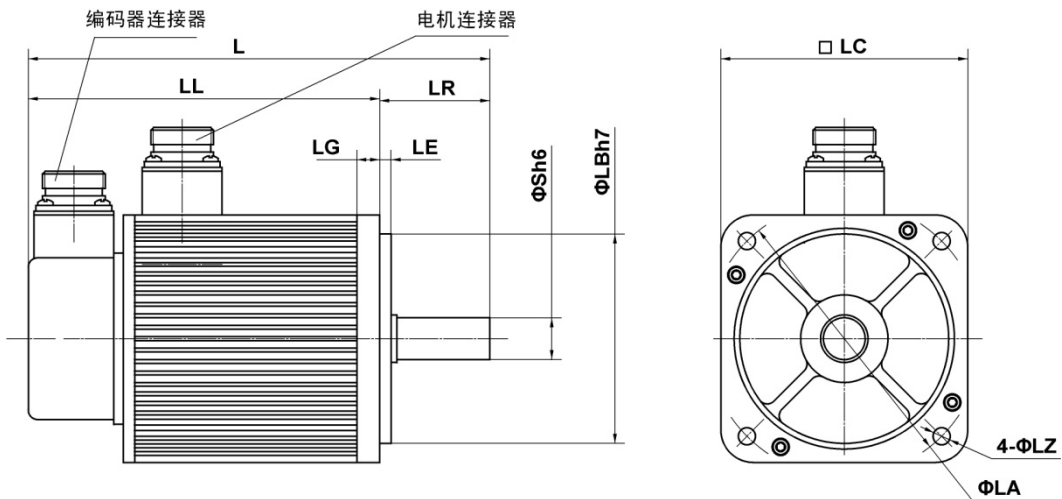
Encoder code

最大径、轴向力：

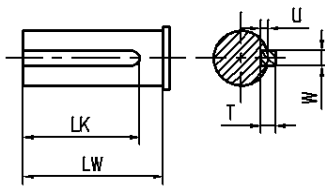
Max diameter/axial force



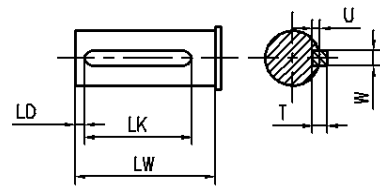
● 安装尺寸



A 型 键
KEYS TYPE A



B 型 键
KEYS TYPE B



C 型 键
KEYS TYPE C

型号	L	LL	LR	LE	LG	LC	LA	LZ	ΦS	LB	T	U	W	LK	LW	LD
150ST-M14615H□BB 150ST-M14320H□BB	312 (374)	231 (293)	81	6	14	150	174	11	28 ⁰ _{-0.013}	130 ⁰ _{-0.04}	7	4	8	40	60	5
150ST-M19115H□BB	331 (393)	250 (312)	81	6	14	150	174	11	28 ⁰ _{-0.013}	130 ⁰ _{-0.04}	7	4	8	40	60	5
150ST-M22315H□BB 150ST-M23920H□BB	361 (423)	280 (342)	81	6	14	150	174	11	28 ⁰ _{-0.013}	130 ⁰ _{-0.04}	7	4	8	40	60	5
150ST-M28715H□BB 150ST-M26320H□BB	387 (449)	306 (368)	81	6	14	150	174	11	28 ⁰ _{-0.013}	130 ⁰ _{-0.04}	7	4	8	40	60	5

注：括号内的数值为带失电制动器的电机长度。
Attention: Rotor moment of inertia with power-off brake in brackets.

● 180机座 (2000rpm/3000rpm)

FRAME

电机型号 MOTOR TYPE	180ST-M18020H□BB	180ST-M23020H□BB	180ST-M27020H□BB
额定功率 RATED POWER	3.6 Kw	4.7 Kw	5.5 Kw
额定转矩 RATED TORQUE	18.0 Nm	23.0 Nm	27.0 Nm
额定转速 RATED SPEED	2000 rpm	2000 rpm	2000 rpm
最高转速 MAXIMUM SPEED	3000 rpm	3000 rpm	3000 rpm
额定电流 RATED CURRENT	12.5 A	15.0 A	18.0 A
转子惯量 ROTOR INERTIA	5.326 Kg $m^2 \times 10^{-3}$ (5.926 Kg $m^2 \times 10^{-3}$)	6.628 Kg $m^2 \times 10^{-3}$ (7.228 Kg $m^2 \times 10^{-3}$)	7.836 Kg $m^2 \times 10^{-3}$ (8.436 Kg $m^2 \times 10^{-3}$)
机械时间常数 MECHANICAL CONSTANT TIME	1.418 ms	1.015 ms	0.972 ms
最大转矩 MAX TORQUE	54.0 Nm	69.0 Nm	81.0 Nm

● 180机座 (1500rpm/3000rpm)

FRAME

电机型号 MOTOR TYPE	180ST-M36015H□BB	180ST-M45015H□BB	180ST-M55015H□BB
额定功率 RATED POWER	5.6 Kw	7.0 Kw	8.6 Kw
额定转矩 RATED TORQUE	36.0 Nm	45.0 Nm	55.0 Nm
额定转速 RATED SPEED	1500 rpm	1500 rpm	1500 rpm
最高转速 MAXIMUM SPEED	3000 rpm	3000 rpm	3000 rpm
额定电流 RATED CURRENT	22.5 A	30.0 A	35.0 A
转子惯量 ROTOR INERTIA	9.957 Kg $m^2 \times 10^{-3}$ (10.557 Kg $m^2 \times 10^{-3}$)	11.834 Kg $m^2 \times 10^{-3}$ (12.434 Kg $m^2 \times 10^{-3}$)	13.796 Kg $m^2 \times 10^{-3}$ (14.369 Kg $m^2 \times 10^{-3}$)
机械时间常数 MECHANICAL CONSTANT TIME	0.875 ms	0.962 ms	0.704 ms
最大转矩 MAX TORQUE	108.0 Nm	135.0 Nm	165.0 Nm

括号内为带失电制动器的转子惯量。

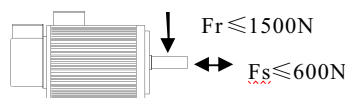
Rotor moment of inertia with power-off brake in brackets.

□编码器代码

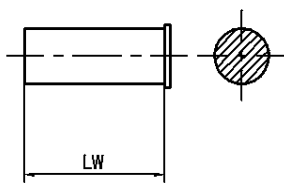
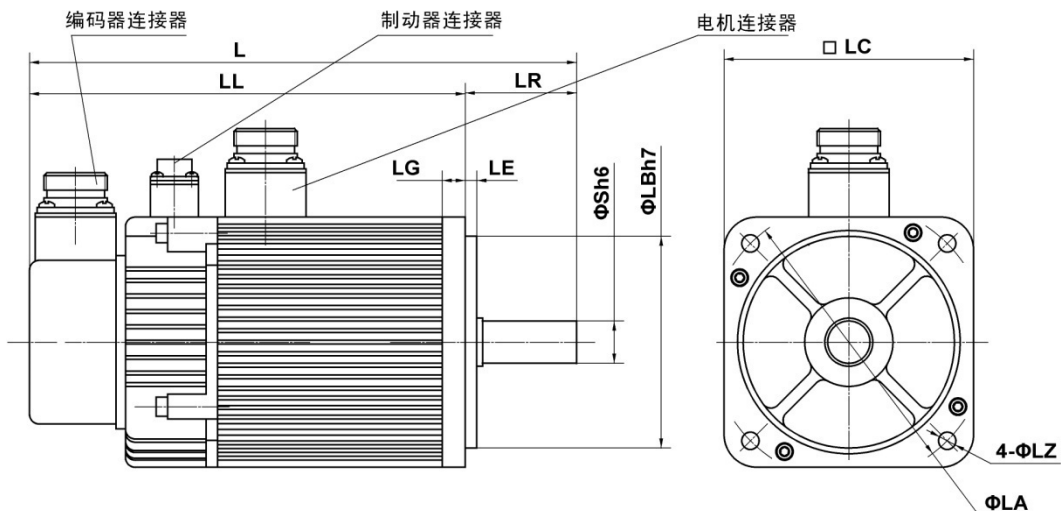
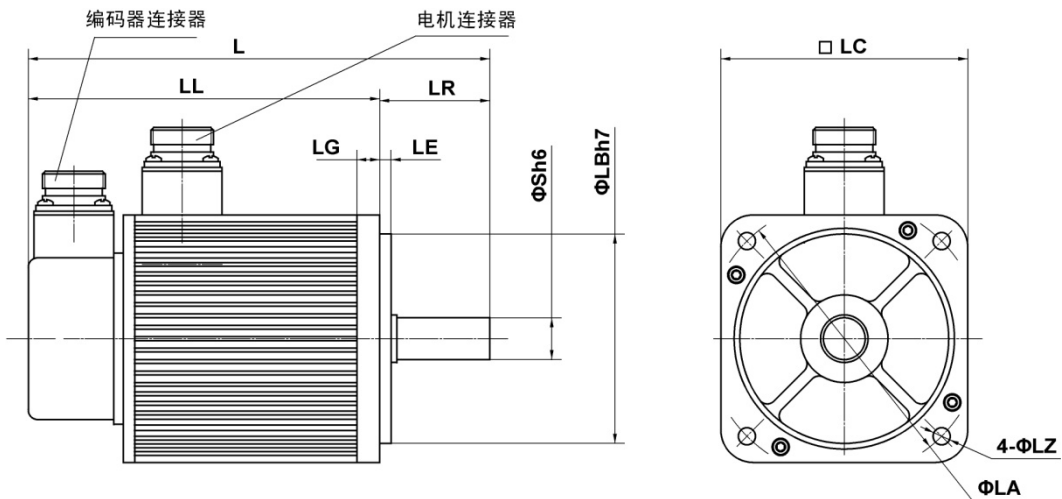
Encoder code

最大径、轴向力：

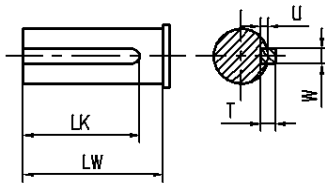
Max diameter/axial force



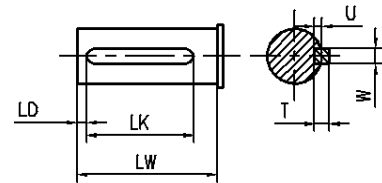
● 安装尺寸



A 型键
KEYS TYPE A



B 型键
KEYS TYPE B



C 型键
KEYS TYPE C

型号	L	LL	LR	LE	LG	LC	LA	LZ	ΦS	LB	T	U	W	LK	LW	LD
180ST-M18020H□BB	321 (393)	242 (314)	80 (79)	4	20	180	200	13.5	35 ⁰ _{-0.013}	150 ⁰ _{-0.04}	8	5	10	60	73	5
180ST-M23020H□BB	345 (417)	266 (338)	80 (79)	4	20	180	200	13.5	35 ⁰ _{-0.013}	150 ⁰ _{-0.04}	8	5	10	60	73	5
180ST-M27020H□BB	365 (437)	286 (358)	80 (79)	4	20	180	200	13.5	35 ⁰ _{-0.013}	150 ⁰ _{-0.04}	8	5	10	60	73	5
180ST-M36015H□BB	399 (471)	320 (392)	80 (79)	4	20	180	200	13.5	35 ⁰ _{-0.013}	150 ⁰ _{-0.04}	8	5	10	60	73	5
180ST-M45015H□BB	431 (503)	352 (424)	80 (79)	4	20	180	200	13.5	35 ⁰ _{-0.013}	150 ⁰ _{-0.04}	8	5	10	60	73	5
180ST-M55015H□BB	463 (535)	384 (456)	80 (79)	4	20	180	200	13.5	35 ⁰ _{-0.013}	150 ⁰ _{-0.04}	8	5	10	60	73	5

注：括号内的数值为带失电制动器的电机长度。
Attention: Rotor moment of inertia with power-off brake in brackets.

LB尺寸可选配114.3⁰_{-0.04}小止口

特点 FEATURES

机座 (mm) : 80、110、130
FRAME SIZE
额定转速(rpm): 1500、2000、3000
RATED SPEED
失电制动器: 选配
ELECTRIC LOSS BRAKE
绝缘等级: F
INSULATION GRADE
安装方式: 法兰盘
INSTALLATION METHOD
环境温度: 0~55°C
ENVIRONMENT TEMPERATURE

额定转矩 (Nm) : 1.3~17.8
RATED TORQUE
最高转速 (rpm) : 3000、4000、5000
MAXIMUM SPEED
额定功率(Kw): 0.4~3.1
RATED POWER
极对数: 5
POLES
防护等级: : 密封自冷式IP65
PROTECTION CLASS
适配驱动器工作电压 (VAC) : 380
MATCHED DRIVER
环境湿度: < 90% (无结露)
ENVIRONMENT HUMIDITY

HDD系列伺服电机命名规则 HDD PRODUCTS CODE SPECIFICATION

<u>110</u>	<u>ST</u>	-	<u>M</u>	<u>042</u>	<u>15</u>	<u>30</u>	<u>H</u>	<u>M1</u>	<u>D</u>	<u>D</u>	<u>Z</u>	<u>/C</u>
(1)	(2)		(3)	(4)	(5)	(6)	(7)	(8)	(9)	(10)	(11)	(12)

(1) 机座号
FRAME SIZE

(4) 额定转矩: 三位数 × 0.1Nm
RATED TORQUE: THE THREE-DIGIT NUMBER×0.1NM

(7) 驱动器工作电压 (VAC) : 380
DRIVER WORKING VOLTAGE CODE

(10) 具有最高转速特性
MAXIMUM SPEED FEATURES

(2) 交流永磁同步伺服电机
AC PERMANENT MAGNET

(5) 额定转速: 二位数×100rpm
RATED SPEED: THE DOUBLE-DIGITAL NUMBER×100RPM

(6) 编码器代码
ENCODER CODE

(11) 安装了失电制动器
WITH THE POWER-OFF BRAKE

(3) 反馈元件类型
FEEDBACK COMPONENTS TYPE

(6) 最高转速: 二位数×100rpm
MAXIMUM SPEED: THE DOUBLE-DIGITAL NUMBER×100RPM

(9) 中惯量
MEDIUM INERTIA

(12) 轴伸端键槽代码, 无键无代码
THE SHAFT END KEYWAY CODE, NO CODE MEANS NO KEY

HDD系列一览表

HDD SERIES LIST

电机型号 MOTOR TYPE	主要参数 TECHNICAL PARAMETERS				
	额定转矩 RATED TORQUE	额定转速 RATED SPEED	最高转速 MAXIMUM SPEED	额定电流 RATED CURRENT	额定功率 RATED POWER
80ST--M0133050H□DD	1.3 Nm	3000 rpm	5000 rpm	1.8 A	0.4 Kw
80ST-M0243050H□DD	2.4 Nm	3000 rpm	5000 rpm	3.2 A	0.75 Kw
80ST-M0333050H□DD	3.3 Nm	3000 rpm	5000 rpm	4.6 A	1.0 Kw
80ST-M0403050H□DD	4.0 Nm	3000 rpm	5000 rpm	5.2 A	1.2 Kw
110ST-M0422030H□DD	4.2 Nm	2000 rpm	3000 rpm	2.8 A	0.88 Kw
110ST-M0423040H□DD	4.2 Nm	3000 rpm	4000 rpm	4.0 A	1.3 Kw
110ST-M0542030H□DD	5.4 Nm	2000 rpm	3000 rpm	3.5 A	1.1 Kw
110ST-M0543040H□DD	5.4 Nm	3000 rpm	4000 rpm	4.8 A	1.7 Kw
110ST-M0642030H□DD	6.4 Nm	2000 rpm	3000 rpm	4.0 A	1.3 Kw
110ST-M0642040H□DD	6.4 Nm	2000 rpm	4000 rpm	5.7 A	2.0 Kw
110ST-M0752030H□DD	7.5 Nm	2000 rpm	3000 rpm	4.8 A	1.6 Kw
130ST-M0421530H□DD	4.2 Nm	1500 rpm	3000 rpm	2.7 A	0.65 Kw
130ST-M0423040H□DD	4.2 Nm	3000 rpm	4000 rpm	3.5 A	1.3 Kw
130ST-M0541530H□DD	5.4 Nm	1500 rpm	3000 rpm	3.6 A	0.85 Kw
130ST-M0543040H□DD	5.4 Nm	3000 rpm	4000 rpm	5.0 A	1.7 Kw
130ST-M0641530H□DD	6.4 Nm	1500 rpm	3000 rpm	4.2 A	1.0 Kw
130ST-M0643040H□DD	6.4 Nm	3000 rpm	4000 rpm	5.8 A	2.0 Kw
130ST-M0751530H□DD	7.5 Nm	1500 rpm	3000 rpm	4.8 A	1.2 Kw
130ST-M0753040H□DD	7.5 Nm	3000 rpm	4000 rpm	6.6 A	2.4 Kw
130ST-M0841530H□DD	8.4 Nm	1500 rpm	3000 rpm	5.8 A	1.3 Kw
130ST-M0842040H□DD	8.4 Nm	2000 rpm	4000 rpm	7.2 A	1.8 Kw
130ST-M0961530H□DD	9.6 Nm	1500 rpm	3000 rpm	6.0 A	1.5 Kw
130ST-M0962040H□DD	9.6 Nm	2000 rpm	4000 rpm	9.0 A	2.0 Kw
130ST-M1151530H□DD	11.5 Nm	1500 rpm	3000 rpm	7.0 A	1.8 Kw
130ST-M1152040H□DD	11.5 Nm	2000 rpm	4000 rpm	11.0 A	2.4Kw
130ST-M1461530H□DD	14.6 Nm	1500 rpm	3000 rpm	9.0 A	2.3 Kw
130ST-M1462040H□DD	14.6 Nm	2000 rpm	4000 rpm	13.2 A	3.1 Kw
130ST-M1781520H□DD	17.8 Nm	1500 rpm	2000 rpm	7.6 A	2.8 Kw

● 80机座 (3000rpm/5000rpm)

FRAME

电机型号 MOTOR TYPE	80ST-M0133050H□DD	80ST-M0243050H□DD
额定功率 RATED POWER	0.4 Kw	0.75 Kw
额定转矩 RATED TORQUE	1.3 Nm	2.4 Nm
额定转速 RATED SPEED	3000 rpm	3000 rpm
最高转速 MAXIMUM SPEED	5000 rpm	5000 rpm
额定电流 RATED CURRENT	1.8 A	3.2 A
转子惯量 ROTOR INERTIA	0.938Kgm ² ×10 ⁻⁴ (1.049Kgm ² ×10 ⁻⁴)	1.813×10 ⁻⁴ Kgm ² (1.924×10 ⁻⁴ Kgm ²)
机械时间常数 MECHANICAL CONSTANT TIME	1.25 ms	0.84 ms
最大转矩 MAX TORQUE	3.9 Nm	7.2 Nm

● 80机座 (3000rpm/5000rpm)

FRAME

电机型号 MOTOR TYPE	80ST-M0333050H□DD	80ST-M0403050H□DD
额定功率 RATED POWER	1.0 Kw	1.3 Kw
额定转矩 RATED TORQUE	3.3 Nm	4.0 Nm
额定转速 RATED SPEED	3000 rpm	3000 rpm
最高转速 MAXIMUM SPEED	5000 rpm	5000 rpm
额定电流 RATED CURRENT	4.6 A	5.2 A
转子惯量 ROTOR INERTIA	2.298Kgm ² ×10 ⁻⁴ (2.409Kgm ² ×10 ⁻⁴)	2.783Kgm ² ×10 ⁻⁴ (2.894 Kgm ² ×10 ⁻⁴)
机械时间常数 MECHANICAL CONSTANT TIME	0.81 ms	0.80 ms
最大转矩 MAX TORQUE	9.9 Nm	12.0 Nm

括号内为带失电制动器的转子惯量。

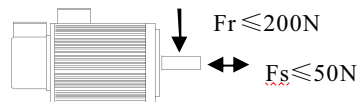
Rotor moment of inertia with power-off brake in brackets.

□编码器代码

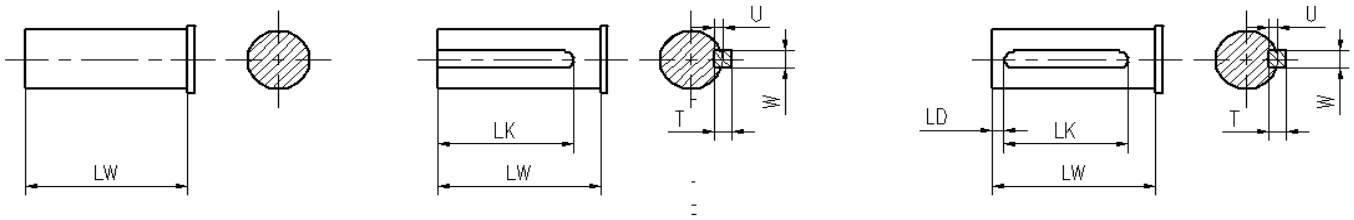
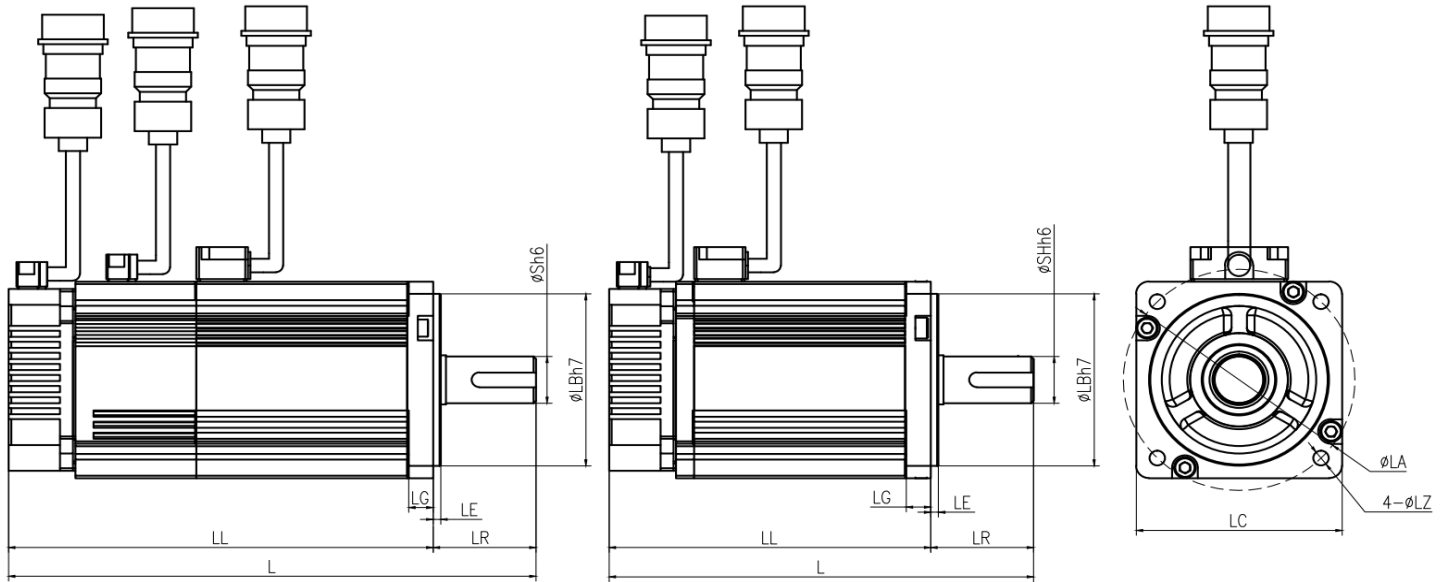
Encoder code

最大径、轴向力：

Max diameter/axial force



● 安装尺寸



A 型键
KEYS TYPE A

B 型键
KEYS TYPE B

C 型键
KEYS TYPE C

型号	L	LL	LR	LE	LG	LC	LA	LZ	ϕS	LB	T	U	W	LK	LW	LD
80ST-M0133050H=DD	143 (183)	103 (143)	40	3	9.5	80	90	6	$19^{0}_{-0.013}$	$70^{0}_{-0.03}$	6	3.5	6	25	35	5
80ST-M0243050H=DD	165 (205)	125 (165)	40	3	9.5	80	90	6	$19^{0}_{-0.013}$	$70^{0}_{-0.03}$	6	3.5	6	25	35	5
80ST-M0333050H=DD	180 (220)	140 (180)	40	3	9.5	80	90	6	$19^{0}_{-0.013}$	$70^{0}_{-0.03}$	6	3.5	6	25	35	5
80ST-M0403050H=DD	195 (235)	155 (195)	40	3	9.5	80	90	6	$19^{0}_{-0.013}$	$70^{0}_{-0.03}$	6	3.5	6	25	35	5

注：括号内的数值为带失电制动器的电机长度。
Attention: Rotor moment of inertia with power-off brake in brackets.

● 110 机座 (2000rpm/3000rpm)

FRAME

电机型号 MOTOR TYPE	110ST-M0422030H _{DD}	110ST-M0542030H _{DD}	110ST-M0642030H _{DD}	110ST-M0752030H _{DD}
额定功率 RATED POWER	0.88 Kw	1.1 Kw	1.3 Kw	1.6 Kw
额定转矩 RATED TORQUE	4.2 Nm	5.4 Nm	6.4 Nm	7.5 Nm
额定转速 RATED SPEED	2000 rpm	2000 rpm	2000 rpm	2000 rpm
最高转速 MAXIMUM SPEED	3000 rpm	3000 rpm	3000 rpm	3000 rpm
额定电流 RATED CURRENT	2.8 A	3.5 A	4.0 A	4.8 A
转子惯量 ROTOR INERTIA	0.787 Kg $m^2 \times 10^{-3}$ (0.851Kg $m^2 \times 10^{-3}$)	0.916 Kg $m^2 \times 10^{-3}$ (0.98 Kg $m^2 \times 10^{-3}$)	1.061 Kg $m^2 \times 10^{-3}$ (1.125 Kg $m^2 \times 10^{-3}$)	1.238 Kg $m^2 \times 10^{-3}$ (1.302 Kg $m^2 \times 10^{-3}$)
机械时间常数 MECHANICAL CONSTANT TIME	2.40ms	1.82 ms	1.60 ms	1.38 ms
最大转矩 MAX TORQUE	12.6 Nm	16.2 Nm	19.2 Nm	22.5 Nm

● 110 机座 (3000rpm/4000rpm)

FRAME

电机型号 MOTOR TYPE	110ST-M0423040H _{DD}	110ST-M0543040H _{DD}	110ST-M0642040H _{DD}
额定功率 RATED POWER	1.3 Kw	1.7 Kw	1.3 Kw
额定转矩 RATED TORQUE	4.2 Nm	5.4 Nm	6.4 Nm
额定转速 RATED SPEED	3000 rpm	3000 rpm	2000 rpm
最高转速 MAXIMUM SPEED	4000 rpm	4000 rpm	4000 rpm
额定电流 RATED CURRENT	4.0 A	4.8 A	5.7A
转子惯量 ROTOR INERTIA	0.787 Kg $m^2 \times 10^{-3}$ (0.851Kg $m^2 \times 10^{-3}$)	0.916 Kg $m^2 \times 10^{-3}$ (0.98 Kg $m^2 \times 10^{-3}$)	1.061 Kg $m^2 \times 10^{-3}$ (1.125 Kg $m^2 \times 10^{-3}$)
机械时间常数 MECHANICAL CONSTANT TIME	2.14ms	1.80 ms	1.74 ms
最大转矩 MAX TORQUE	12.6 Nm	16.2 Nm	19.2 Nm

括号内为带失电制动器的转子惯量。

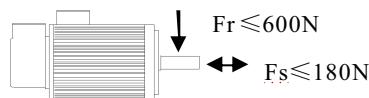
Rotor moment of inertia with power-off brake in brackets.

□编码器代码

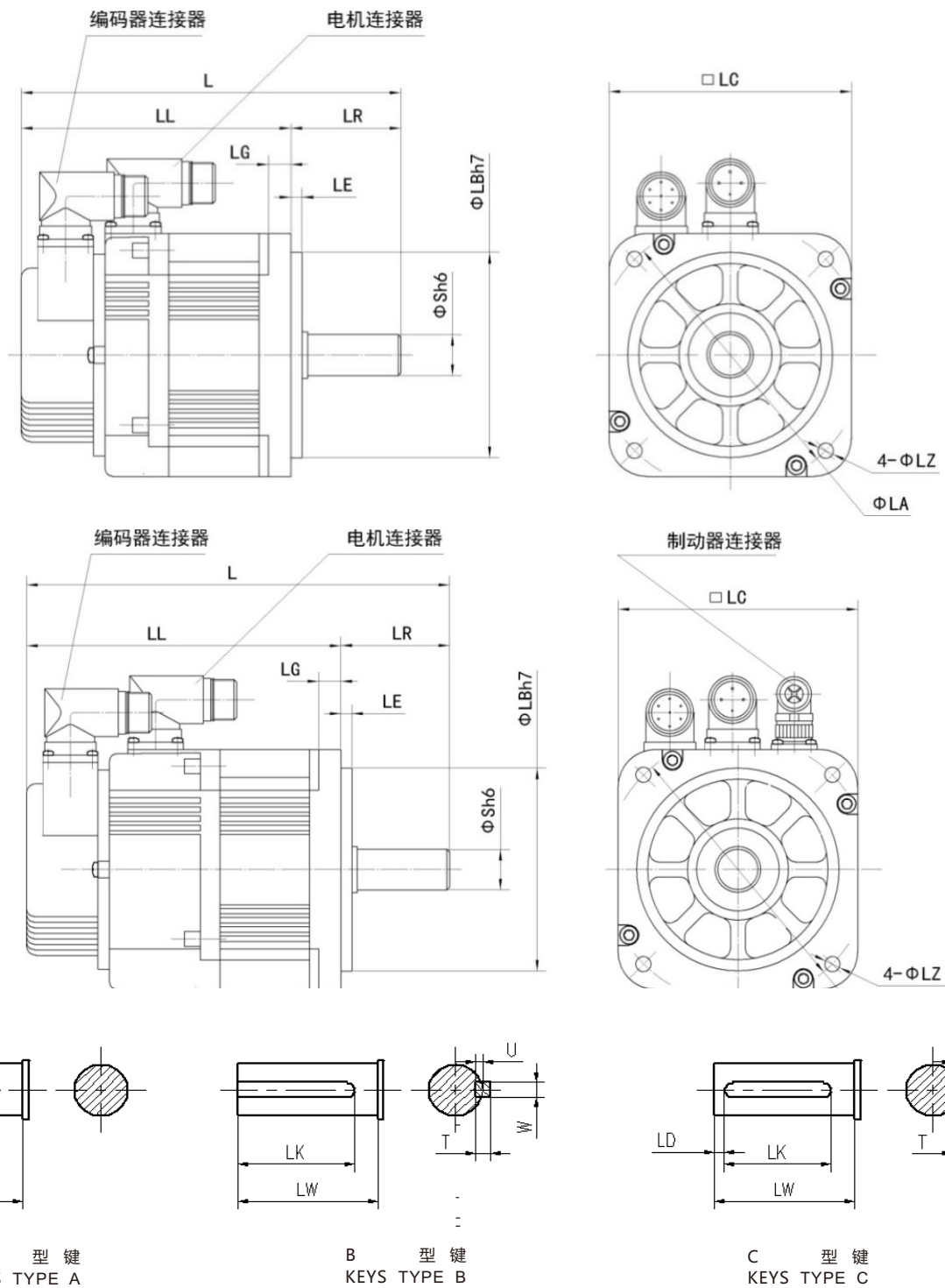
Encodercode

最大径、轴向力:

Max diameter/axial force



● 安装尺寸



型号	L	LL	LR	LE	LG	LC	LA	LZ	ΦS	LB	T	U	W	LK	LW	LD
110ST-M0422030H□DD 110ST-M0423040H□DD	209 (245)	153 (189)	56	5	12	110	130	9	19 ⁰ _{-0.013}	95 ⁰ _{-0.04}	6	3.5	6	40	48	3
110ST-M0542030H□DD 110ST-M0543040H□DD	219 (255)	163 (199)	56	5	12	110	130	9	19 ⁰ _{-0.013}	95 ⁰ _{-0.04}	6	3.5	6	40	48	3
110ST-M0642030H□DD 110ST-M0642040H□DD	229 (265)	173 (209)	56	5	12	110	130	9	19 ⁰ _{-0.013}	95 ⁰ _{-0.04}	6	3.5	6	40	48	3
110ST-M0752030H□DD	240 (276)	184 (220)	56	5	12	110	130	9	19 ⁰ _{-0.013}	95 ⁰ _{-0.04}	6	3.5	6	40	48	3

注：括号内的数值为带失电制动器的电机长度。
Attention: Rotor moment of inertia with power-off brake in brackets.

● 130 机座 (1500rpm/3000rpm)

FRAME

电机型号 MOTOR TYPE	130ST-M0421530H□DD	130ST-M0541530H□DD	130ST-M0641530H□DD
额定功率 RATED POWER	0.65 Kw	0.85 Kw	1.0 Kw
额定转矩 RATED TORQUE	4.2 Nm	5.4 Nm	6.4 Nm
额定转速 RATED SPEED	1500 rpm	1500 rpm	1500 rpm
最高转速 MAXIMUM SPEED	3000 rpm	3000 rpm	3000 rpm
额定电流 RATED CURRENT	2.7A	3.6 A	4.2 A
转子惯量 ROTOR INERTIA	1.163 Kg $m^2 \times 10^{-3}$ (1.33 Kg $m^2 \times 10^{-3}$)	1.388 Kg $m^2 \times 10^{-3}$ (1.555 Kg $m^2 \times 10^{-3}$)	1.604 Kg $m^2 \times 10^{-3}$ (1.771 Kg $m^2 \times 10^{-3}$)
机械时间常数 MECHANICAL CONSTANT TIME	2.82ms	2.63 ms	2.11 ms
最大转矩 MAX TORQUE	12.6 Nm	16.2 Nm	19.2 Nm

● 130 机座 (1500rpm/3000rpm)

FRAME

电机型号 MOTOR TYPE	130ST-M0751530H□DD	130ST-M0841530H□DD	130ST-M0961530H□DD
额定功率 RATED POWER	1.2 Kw	1.3 Kw	1.5 Kw
额定转矩 RATED TORQUE	7.5 Nm	8.4 Nm	9.6 Nm
额定转速 RATED SPEED	1500 rpm	1500 rpm	1500 rpm
最高转速 MAXIMUM SPEED	3000 rpm	3000 rpm	3000 rpm
额定电流 RATED CURRENT	4.8 A	5.8 A	6.0 A
转子惯量 ROTOR INERTIA	1.857 Kg $m^2 \times 10^{-3}$ (2.024 Kg $m^2 \times 10^{-3}$)	2.059 Kg $m^2 \times 10^{-3}$ (2.226 Kg $m^2 \times 10^{-3}$)	2.369 Kg $m^2 \times 10^{-3}$ (2.536 Kg $m^2 \times 10^{-3}$)
机械时间常数 MECHANICAL CONSTANT TIME	2.12 ms	2.21 ms	1.93 ms
最大转矩 MAX TORQUE	22.5 Nm	25.2 Nm	28.8 Nm

括号内为带失电制动器的转子惯量。

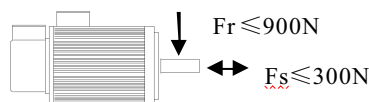
Rotor moment of inertia with power-off brake in brackets.

□编码器代码

Encoder code

最大径、轴向力：

Max diameter/axial force



● 130 机座 (1500rpm/3000rpm)

FRAME

电机型号 MOTOR TYPE	130ST-M1151530H□DD	130ST-M1461530H□DD
额定功率 RATED POWER	1.8 Kw	2.3 Kw
额定转矩 RATED TORQUE	11.5 Nm	14.6 Nm
额定转速 RATED SPEED	1500 rpm	1500 rpm
最高转速 MAXIMUM SPEED	3000 rpm	3000 rpm
额定电流 RATED CURRENT	7.0 A	9.0 A
转子惯量 ROTOR INERTIA	3.015 Kg $m^2 \times 10^{-3}$ (3.182 Kg $m^2 \times 10^{-3}$)	4.070 Kg $m^2 \times 10^{-3}$ (4.237 Kg $m^2 \times 10^{-3}$)
机械时间常数 MECHANICAL CONSTANT TIME	2.224 ms	1.54 ms
最大转矩 MAX TORQUE	34.5 Nm	43.8 Nm

● 130 机座 (1500rpm/2000rpm)

FRAME

电机型号 MOTOR TYPE	130ST-M1781520H□DD
额定功率 RATED POWER	2.8 Kw
额定转矩 RATED TORQUE	17.8 Nm
额定转速 RATED SPEED	1500 rpm
最高转速 MAXIMUM SPEED	2000 rpm
额定电流 RATED CURRENT	19.0 A
转子惯量 ROTOR INERTIA	4.548 Kg $m^2 \times 10^{-3}$ (4.715 Kg $m^2 \times 10^{-3}$)
机械时间常数 MECHANICAL CONSTANT TIME	1.454ms
最大转矩 MAX TORQUE	53.4 Nm

括号内为带失电制动器的转子惯量。

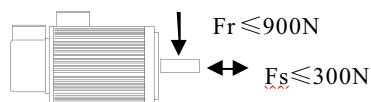
Rotor moment of inertia with power-off brake in brackets.

□编码器代码

Encodercode

最大径、轴向力:

Max diameter/axial force



● 130 机座 (3000rpm/4000rpm)

FRAME

电机型号 MOTOR TYPE	130ST-M0423040H _{DD}	130ST-M0543040H _{DD}
额定功率 RATED POWER	1.3 Kw	1.7 Kw
额定转矩 RATED TORQUE	4.2 Nm	5.4 Nm
额定转速 RATED SPEED	3000 rpm	3000 rpm
最高转速 MAXIMUM SPEED	4000 rpm	4000 rpm
额定电流 RATED CURRENT	3.5 A	5.0 A
转子惯量 ROTOR INERTIA	1.163 Kg $m^2 \times 10^{-3}$ (1.33 Kg $m^2 \times 10^{-3}$)	1.388 Kg $m^2 \times 10^{-3}$ (1.555 Kg $m^2 \times 10^{-3}$)
机械时间常数 MECHANICAL CONSTANT TIME	2.74 ms	3.13 ms
最大转矩 MAX TORQUE	12.6 Nm	16.2 Nm

● 130 机座 (2000rpm/3000rpm/4000rpm)

FRAME

电机型号 MOTOR TYPE	130ST-M0643040H _{DD}	130ST-M0753040H _{DD}	130ST-M0842040H _{DD}
额定功率 RATED POWER	2.0 Kw	2.4 Kw	1.8 Kw
额定转矩 RATED TORQUE	6.4 Nm	7.5 Nm	8.4 Nm
额定转速 RATED SPEED	3000 rpm	3000 rpm	2000 rpm
最高转速 MAXIMUM SPEED	4000 rpm	4000 rpm	4000 rpm
额定电流 RATED CURRENT	5.8 A	6.6 A	7.2 A
转子惯量 ROTOR INERTIA	1.604 Kg $m^2 \times 10^{-3}$ (1.771 Kg $m^2 \times 10^{-3}$)	1.857 Kg $m^2 \times 10^{-3}$ (2.024 Kg $m^2 \times 10^{-3}$)	2.369 Kg $m^2 \times 10^{-3}$ (2.536 Kg $m^2 \times 10^{-3}$)
机械时间常数 MECHANICAL CONSTANT TIME	2.544 ms	2.41 ms	2.19 ms
最大转矩 MAX TORQUE	19.2 Nm	22.5 Nm	25.2 Nm

括号内为带失电制动器的转子惯量。

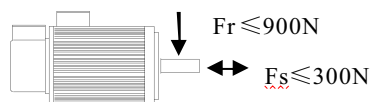
Rotor moment of inertia with power-off brake in brackets.

□ 编码器代码

Encoder code

最大径、轴向力：

Max diameter/axial force



● 130 机座 (2000rpm/4000rpm)

FRAME

电机型号 MOTOR TYPE	130ST-M0962040H _{DD}	130ST-M1152040H _{DD}	130ST-M1462040H _{DD}
额定功率 RATED POWER	2.0 Kw	2.4 Kw	3.1 Kw
额定转矩 RATED TORQUE	9.6 Nm	11.5 Nm	14.6 Nm
额定转速 RATED SPEED	2000 rpm	2000 rpm	2000 rpm
最高转速 MAXIMUM SPEED	4000 rpm	4000 rpm	4000 rpm
额定电流 RATED CURRENT	9.0 A	11.0 A	13.2 A
转子惯量 ROTOR INERTIA	3.015 Kg $m^2 \times 10^{-3}$ (3.182 Kg $m^2 \times 10^{-3}$)	4.070 Kg $m^2 \times 10^{-3}$ (4.237 Kg $m^2 \times 10^{-3}$)	4.548 Kg $m^2 \times 10^{-3}$ (4.715 Kg $m^2 \times 10^{-3}$)
机械时间常数 MECHANICAL CONSTANT TIME	2.11 ms	1.99 ms	1.65 ms
最大转矩 MAX TORQUE	28.8 Nm	34.5 Nm	43.8 Nm

括号内为带失电制动器的转子惯量。

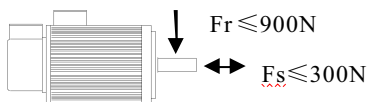
Rotor moment of inertia with power-off brake in brackets.

□ 编码器代码

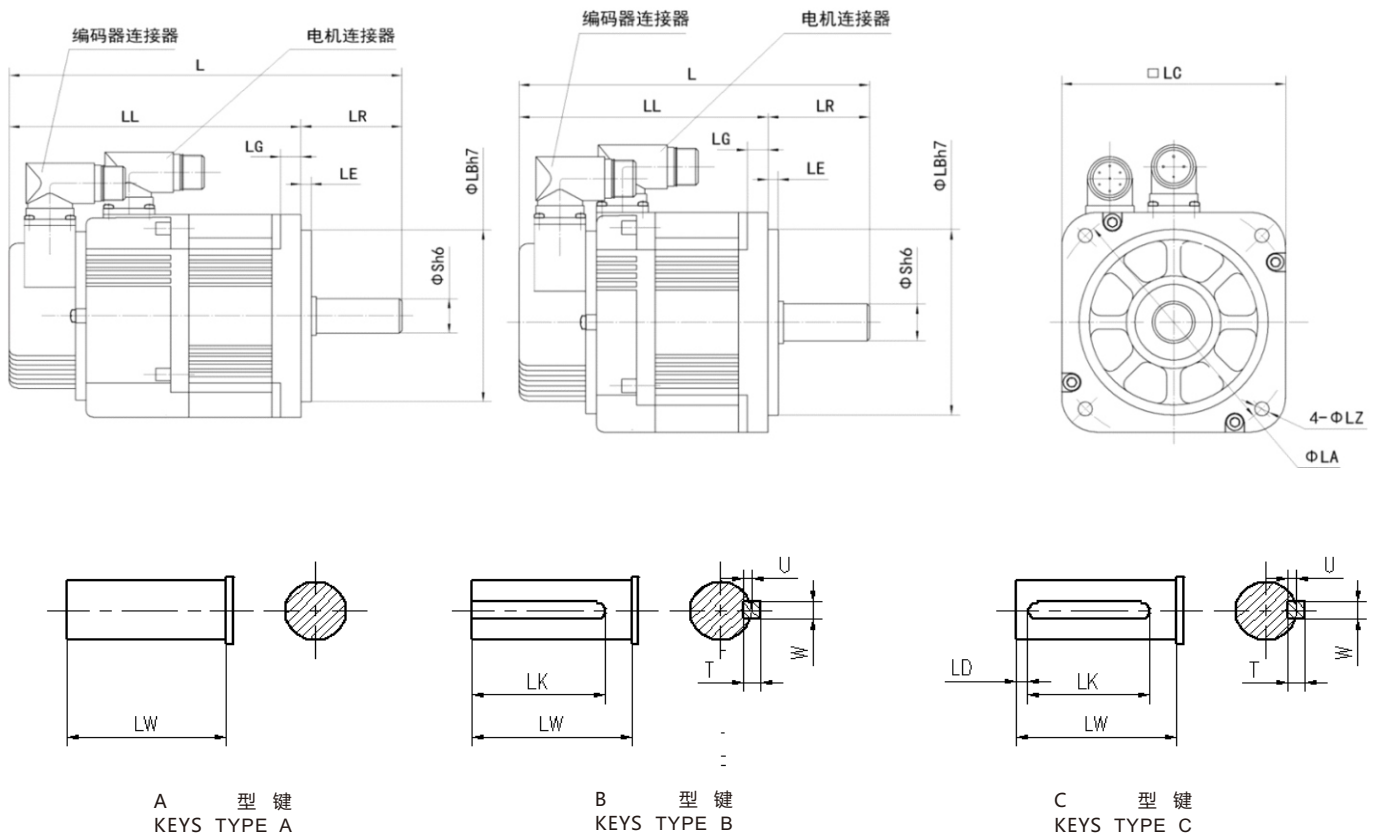
Encoder code

最大径、轴向力:

Max diameter/axial force



● 安装尺寸



型号	L	LL	LR	LE	LG	LC	LA	LZ	ΦS	LB	T	U	W	LK	LW	LD
130ST-M0421530H□DD 130ST-M0423040H□DD	198 (225)	139 (166)	59	6	12	130	145	8.5	$22^{0}_{-0.013}$	$110^{0}_{-0.04}$	6	3.5	6	40	50	5
130ST-M0541530H□DD 130ST-M0543040H□DD	204 (231)	145 (172)	59	6	12	130	145	8.5	$22^{0}_{-0.013}$	$110^{0}_{-0.04}$	6	3.5	6	40	50	5
130ST-M0641530H□DD 130ST-M0643040H□DD	211 (238)	152 (178)	59	6	12	130	145	8.5	$22^{0}_{-0.013}$	$110^{0}_{-0.04}$	6	3.5	6	40	50	5
130ST-M0751530H□DD 130ST-M0753040H□DD	218 (245)	159 (186)	59	6	12	130	145	8.5	$22^{0}_{-0.013}$	$110^{0}_{-0.04}$	6	3.5	6	40	50	5
130ST-M0841530H□DD 130ST-M0842040H□DD	224 (251)	165 (192)	59	6	12	130	145	8.5	$22^{0}_{-0.013}$	$110^{0}_{-0.04}$	6	3.5	6	40	50	5
130ST-M0961530H□DD 130ST-M0962040H□DD	232 (259)	173 (200)	59	6	12	130	145	8.5	$22^{0}_{-0.013}$	$110^{0}_{-0.04}$	6	3.5	6	40	50	5
130ST-M1151530H□DD 130ST-M1152040H□DD	251 (278)	192 (219)	59	6	12	130	145	8.5	$22^{0}_{-0.013}$	$110^{0}_{-0.04}$	6	3.5	6	40	50	5
130ST-M1461530H□DD 130ST-M1462040H□DD	283 (310)	224 (251)	59	6	12	130	145	8.5	$22^{0}_{-0.013}$	$110^{0}_{-0.04}$	6	3.5	6	40	50	5
130ST-M1781520H□DD	304 (331)	245 (272)	59	6	12	130	145	8.5	$22^{0}_{-0.013}$	$110^{0}_{-0.04}$	6	3.5	6	40	50	5

注：括号内的数值为带失电制动器的电机长度。
Attention: Rotor moment of inertia with power-off brake in brackets.

特点
FEATURES

车削电主轴

LATHE SPINDLE

套筒直径 (mm): 150、180、200

QUILL DIAMETER

过载倍数: 150%

OVERLOAD CAPACITY

额定转速 (rpm): 2000、2500、3000

RATED SPEED

额定转矩 (Nm): 7.0~52.5

RATED TORQUE

冷却方式: 液冷

COOLING TYPE

卡盘型式: 液压

CHUCK TYPE

环境温度: 0~55°C

ENVIRONMENT TEMPERATURE

电机类型: 永磁同步

MOTOR TYPE

工作制: S1/S6-40%

DUTY TYPE

额定功率 (Kw): 3.7、5.5、7.5、11

RATED POWER

最高转速 (rpm): 5000、6000、8000

MAXIMUM SPEED

适配驱动器工作电压 (VAC): 380

MATCHED DRIVER WORKING VOLTAGE

润滑方式: 油脂

LUBRICATING TYPE

轴承安装方式: TBT/DB

BEARING INSTALLATION

环境湿度: 小于90% (无结露)

ENVIRONMENT HUMIDITY

CTD系列车削电主轴命名规则

CTD SERIES LATHE SPINDLE NAMING RULE

200	CTD	075	20	05	H	N	B	A2-6
(1)	(2)	(3)	(4)	(5)	(6)	(7)	(8)	(9)

(1) 套筒直径: 150、180、200

(2) CTD车削电主轴

(3) 电机功率: 三位数×0.1Kw

(4) 额定转速: 二位数×100rpm

(5) 最高转速: 二位数×1000rpm

(6) 驱动器工作电压 (VAC): 380

(7) 编码器代码

(8) 版本代码

(9) 主轴鼻规格

CTD系列一览表

CTD SERIES LIST

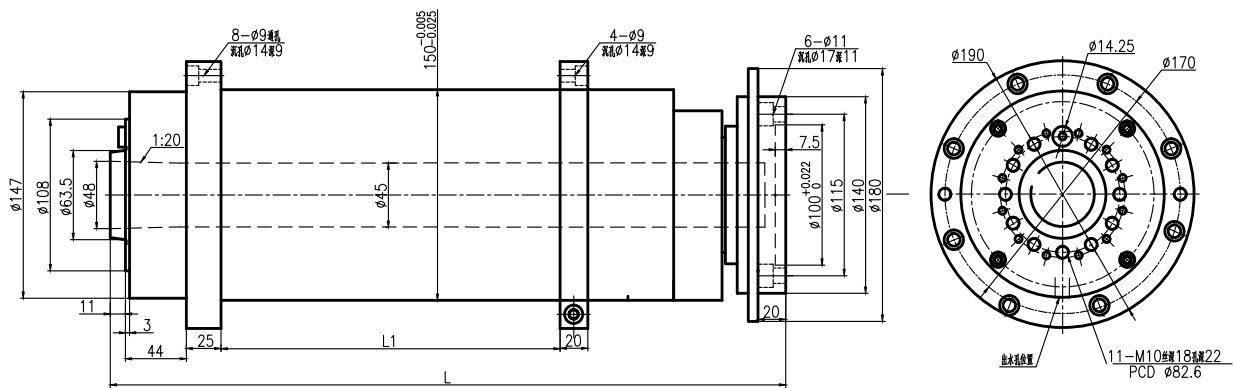
同步电主轴型号 SPINDLE TYPE	主要参数 MAIN PARAMETERS			
	额定功率 RATED POWER	额定转速 RATED SPEED	最高转速 MAXIMUM SPEED	额定转矩 RATED TORQUE
150CTD0373008H□BA2-4	3.7 Kw	3000 rpm	8000 rpm	11.8Nm
150CTD0553006H□BA2-4	5.5 Kw	3000 rpm	6000 rpm	17.5 Nm
180CTD0552006H□BA2-5	5.5 Kw	2000 rpm	6000 rpm	26.0 Nm
180CTD0752505H□BA2-5	7.5Kw	2500 rpm	5000 rpm	28.7Nm
200CTD0752005H□BA2-6	7.5Kw	2000 rpm	5000 rpm	35.8Nm
200CTD1102005H□BA2-6	11 Kw	2000 rpm	5000 rpm	52.5 Nm

适配驱动器工作电压代码: H-AC380V, L-AC220V。

编码器代码□: N-22bit串口协议编码器, P-256齿脉冲式编码器。

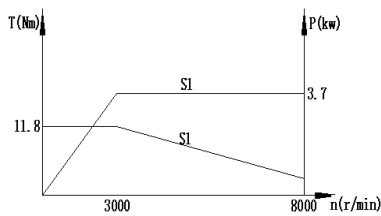
热反馈元件: PTC130

● 150系列：机械尺寸

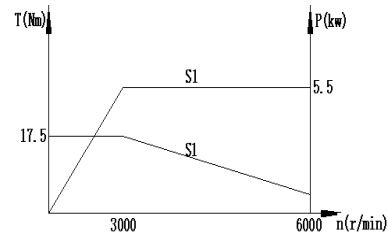


型号	L (mm)	L1 (mm)
150CTD0373080H□BA2-4	500	245~294
150CTD0553006H□BA2-4	542	245~349

● T - N (P - N)

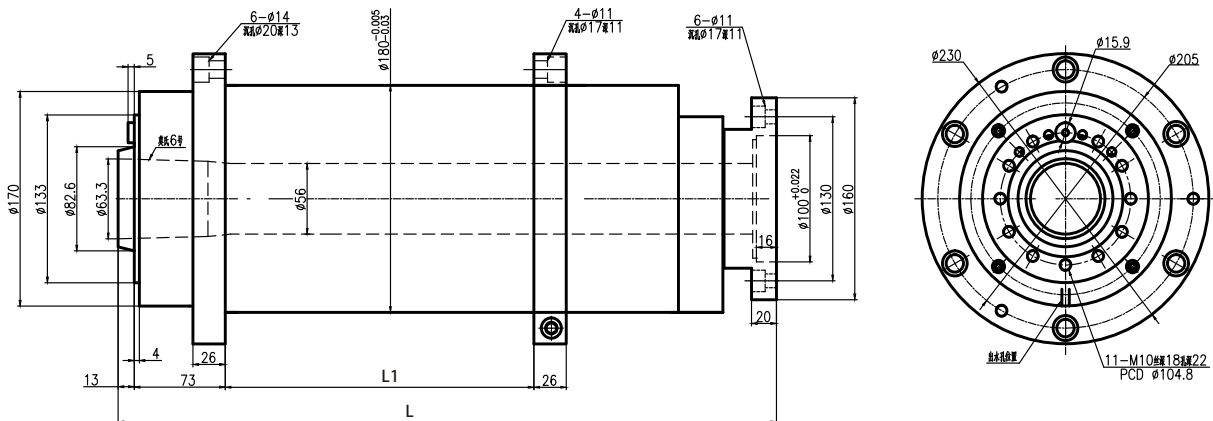


150CTD0373080H□BA2-4



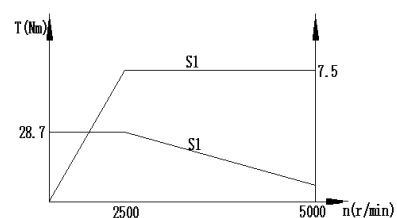
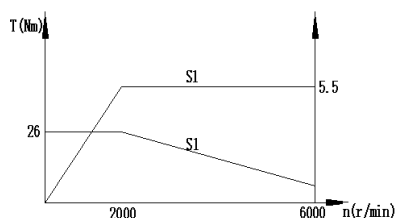
150CTD0553006H□BA2-4

● 180系列：机械尺寸

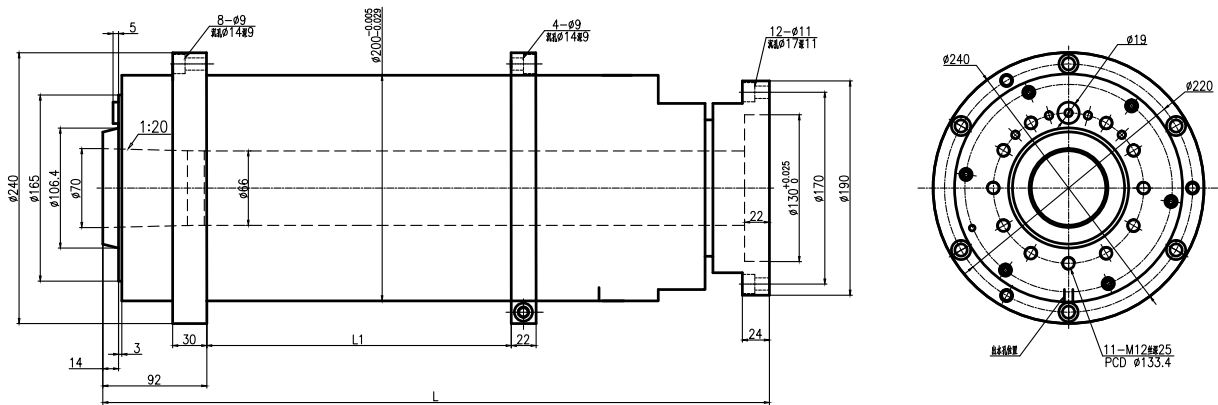


型号	L (mm)	L1 (mm)
180CTD0552060H□BA2-5	543	245~339
180CTD0752550H□BA2-5	543	245~339

● T - N (P - N)

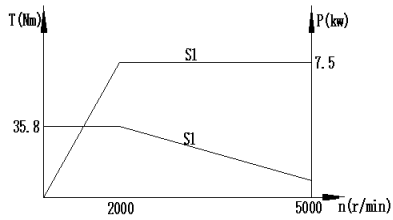


● 200系列：机械尺寸

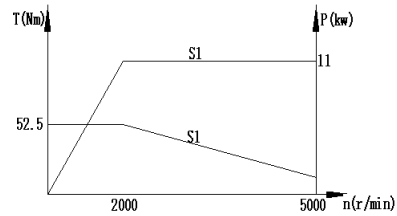


型号	L (mm)	L1 (mm)
200CTD0752050H□BA2-6	591	270~348
200CTD1102050H□BA2-6	651	270~408

● T - N (P - N)



200CTD1102050H□BA2-6



200CTD0752050H□BA2-6

武汉华大新型电机科技股份有限公司是一家专业研发、生产和销售控制电机的专业厂家。

华大电机公司位于武汉市江夏区藏龙岛科技园谭湖二路6号。公司拥有40亩办公生产用地，已完成一期工程并投入使用，建筑面积达14,000平方米。

生产厂房建筑面积12,000平方米，拥有高速冲床组成的定转子冲片生产线、数控车床数控磨床等组成的机加工生产线、多工位全自动电泳生产线、多工位定子嵌线生产线、电机成品检测线等200余台设备和检测仪器。



与您共进

武汉华大新型电机科技股份有限公司

Wuhan Huada New Type Motor Technology Co.,Ltd

地址：武汉市江夏区藏龙岛科技园谭湖二路6号

电话：027-87541483

传真：027-87547775

邮编：430221

网址：www.hxdwh.com